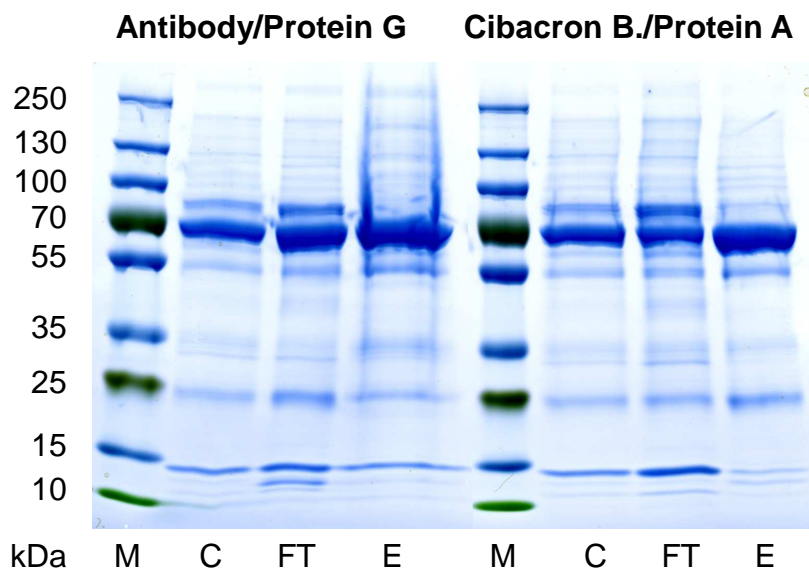


Title: Depletion of highly abundant proteins from human cerebrospinal fluid: a cautionary note

Journal: Molecular Neurodegeneration

Authors: Ramona Günther, Eberhard Krause, Michael Schümann, Ingolf E. Blasig,
Reiner F. Haseloff

Corresponding author: Reiner F. Haseloff, Leibniz Institute of Molecular Pharmacology,
Robert-Roessle-Str. 10, D-13125 Berlin, Germany; email, haseloff@fmp-berlin.de



Supplementary Figure 1: Protein fractions obtained by depletion of human cerebrospinal fluid (CSF), separated by sodium dodecyl sulphate gel electrophoresis and stained by Coomassie Brilliant Blue G250. (Protein marker, M; CSF undepleted, C; depleted (=flow-through) fraction, FT; column-bound (=eluate) fraction, E); protein load, 5 µg/lane