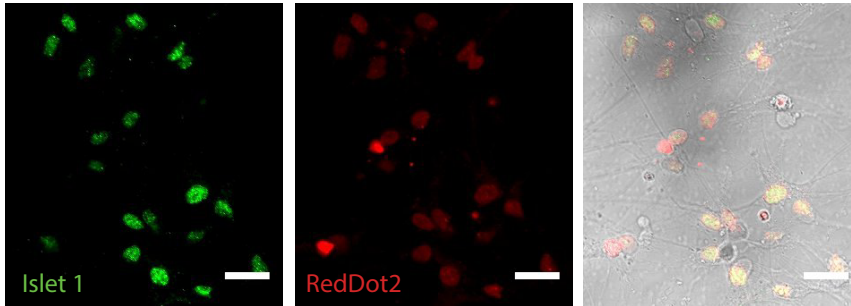
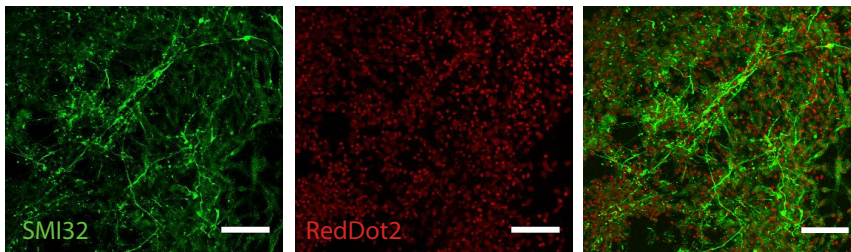


A



B



Additional File 10. Characterization of iPSC derived motor neurons. Quantification of Islet 1 (A) and SMI32 (B) positive cells was performed using immunocytochemistry and analysis using Image J software. Islet 1 and SMI32 positive cells were calculated as a percentage of the total number of cells (determined by nuclear stain) from motor neuron cultures generated from six donor cell lines, using 6-10 images from each technical replicate (separate differentiation experiments using 3 technical replicates for Islet 1 and 2 technical replicates for SMI32). The motor neuron cultures contained 90.5 ± 1.4 % SMI32-positive cells and 88.8 ± 1.4 % Islet 1-positive cells.