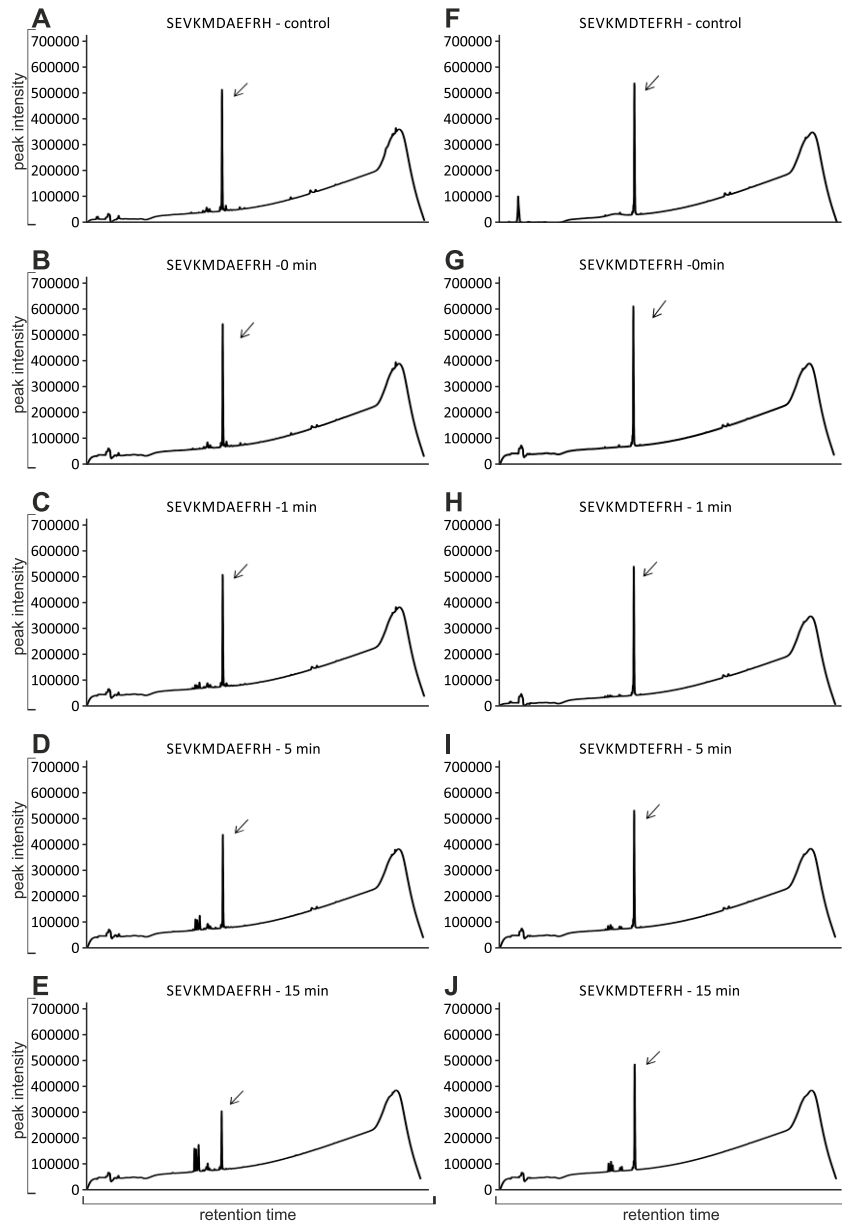


Fig. S4



Additional Fig. S4: Meprin β prefers cleavage of wt APP compared to APP A673T. 15 nm recombinant meprin β was incubated with synthetic APP peptides for different time intervals. HPLC analysis showed that processing kinetics of APP A376T (F-J) were decreased compared to wt APP (A-E). Occurring peaks with smaller retention times were identified as cleavage products by MALDI MS. Peak intensity has been measured at 214