

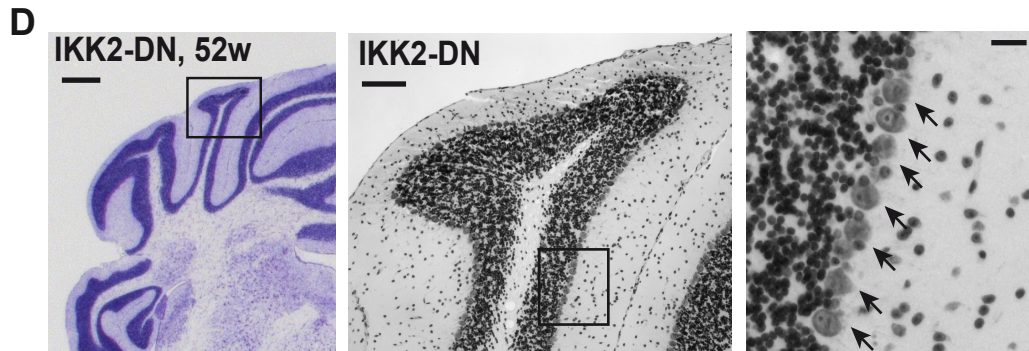
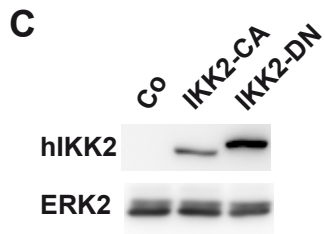
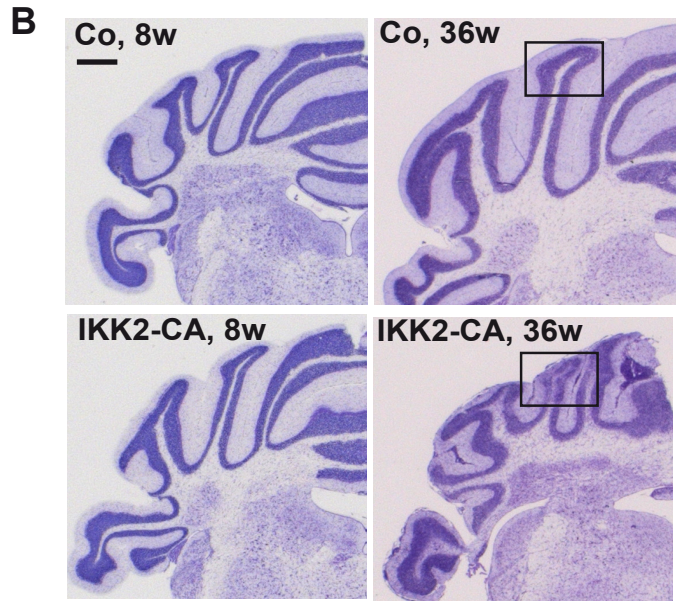
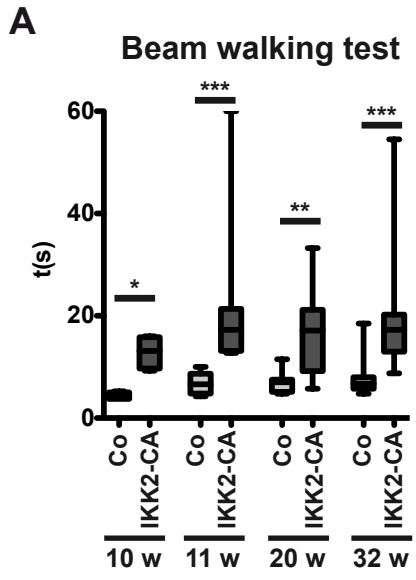
Additional file

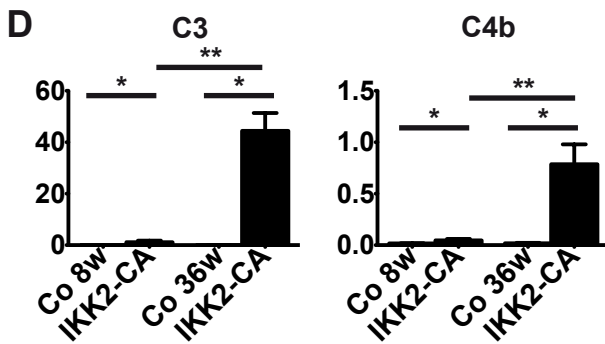
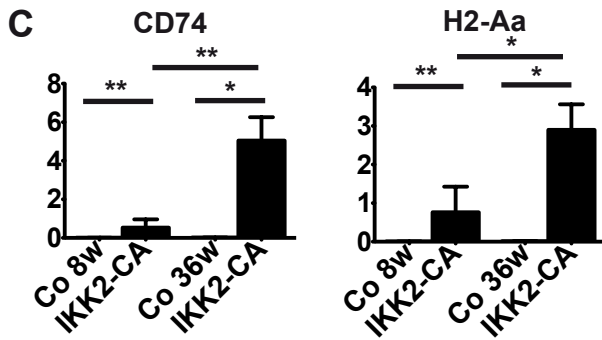
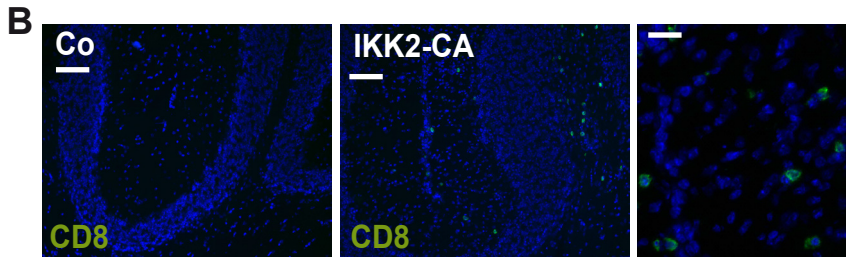
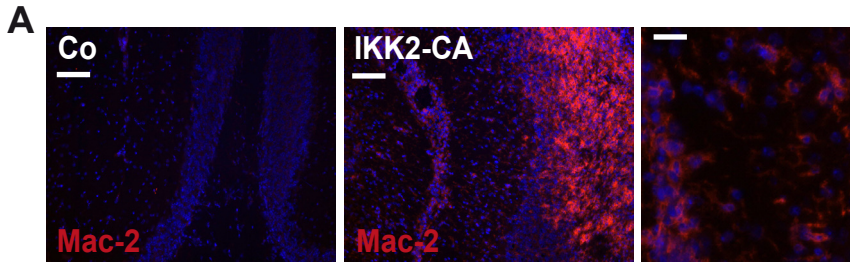
Transient IKK2 activation in astrocytes initiates selective non-cell-autonomous neurodegeneration

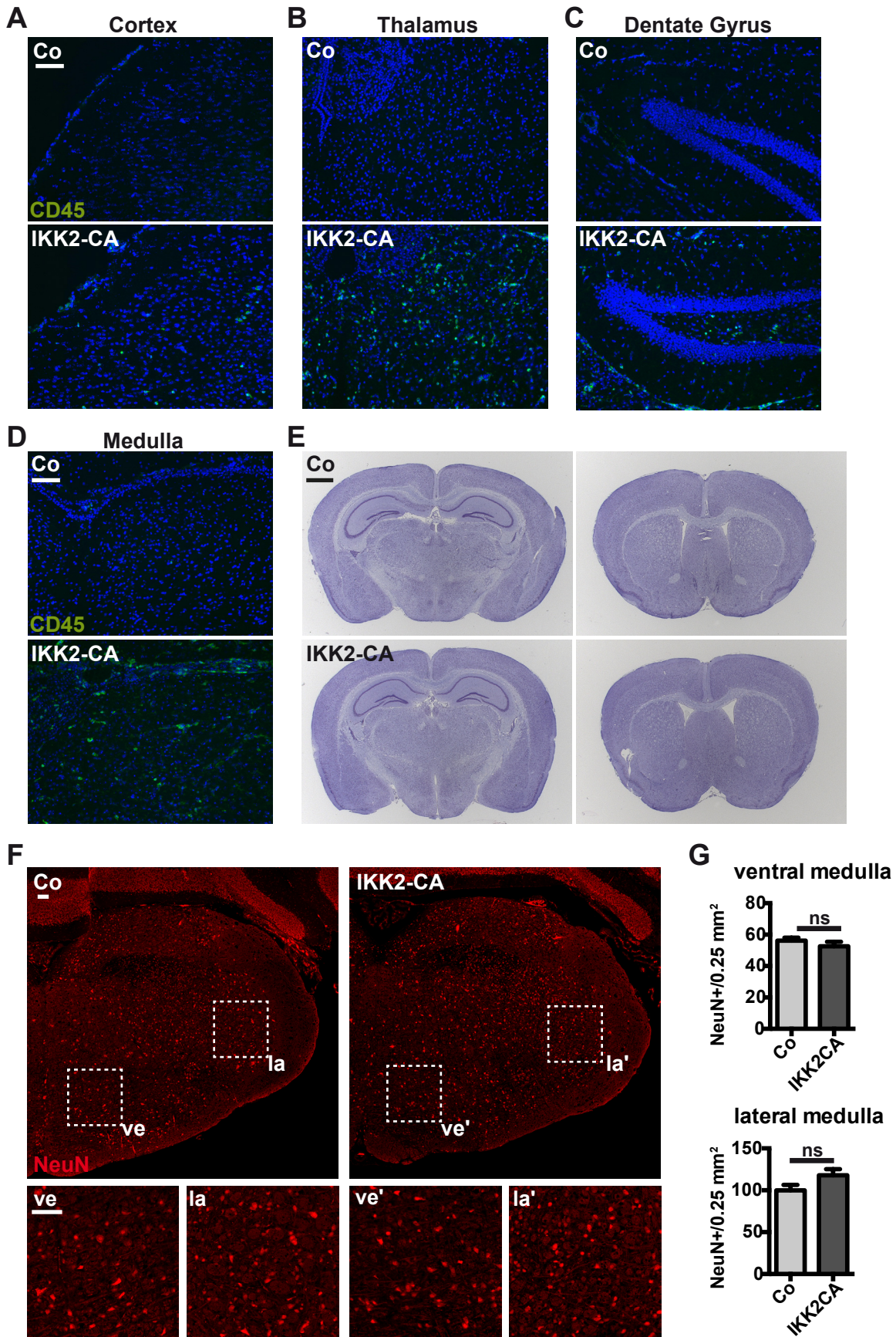
Michael Lattke, Stephanie N. Reichel, Alexander Magnutzki, Alireza Abaei, Volker Rasche, Paul Walther, Dinis P. Calado Boris Ferger, Thomas Wirth and Bernd Baumann

Contains:

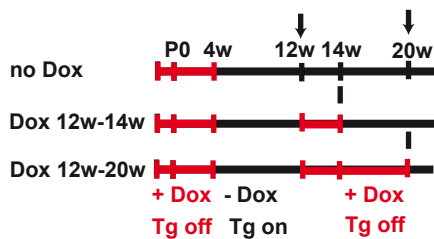
Figures S1 – S8.



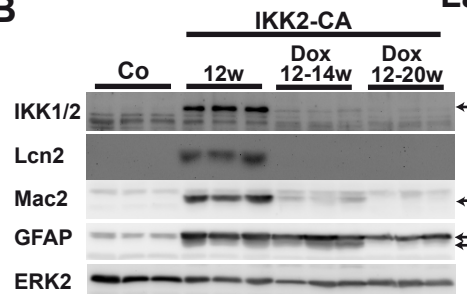




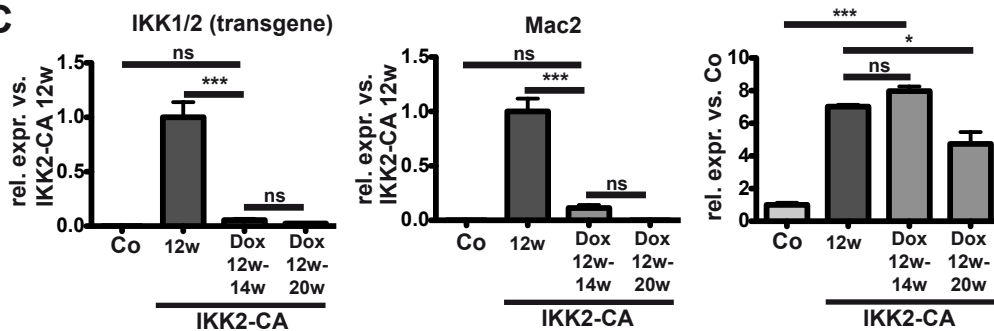
A



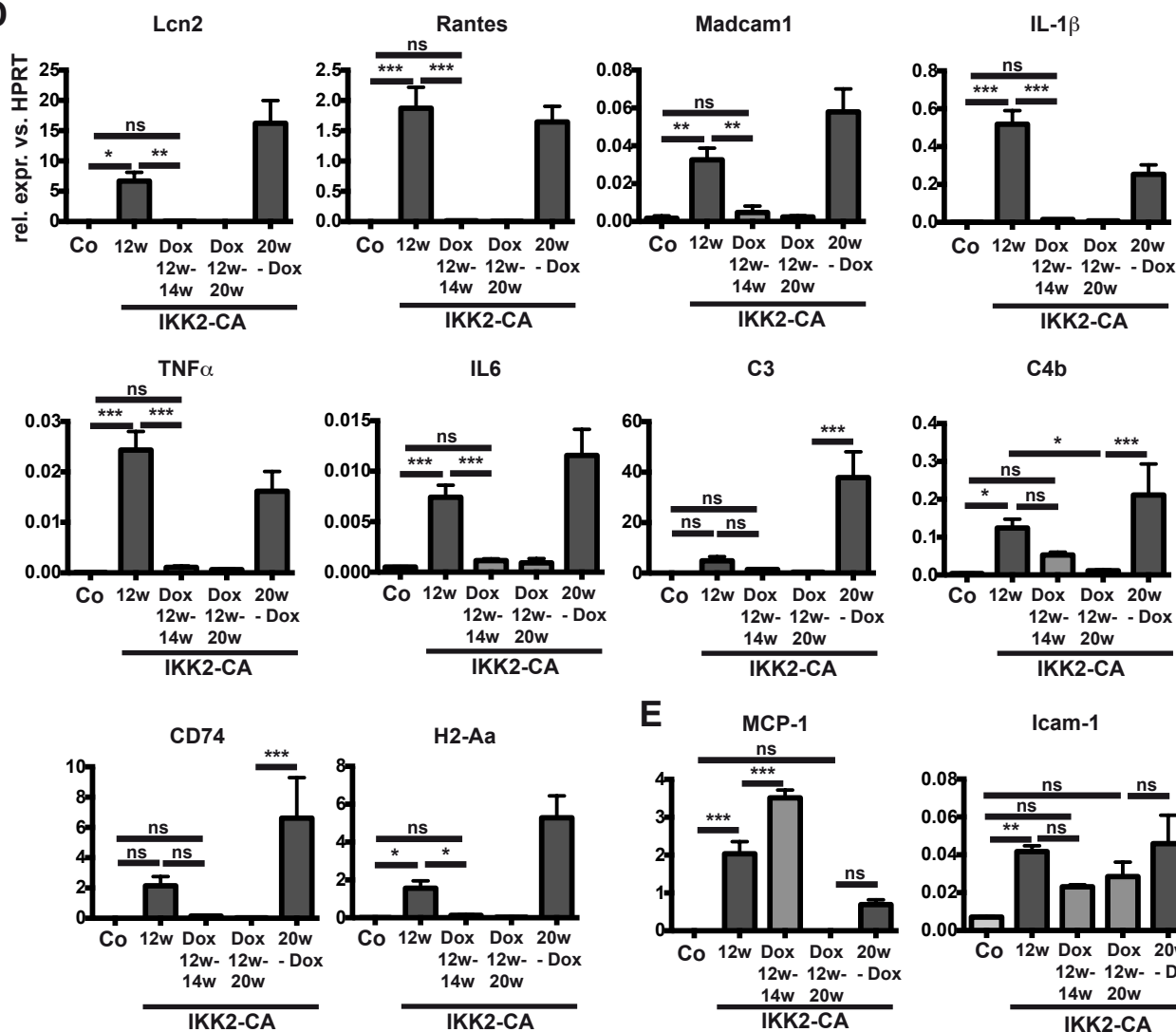
B



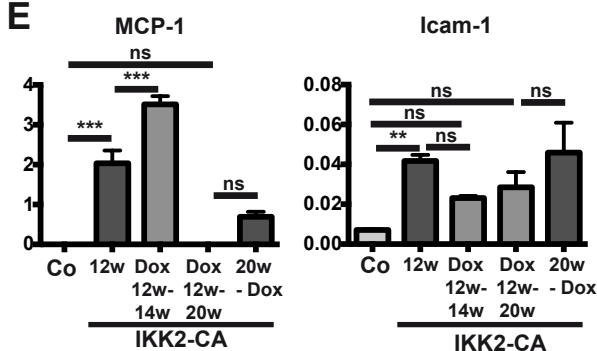
C



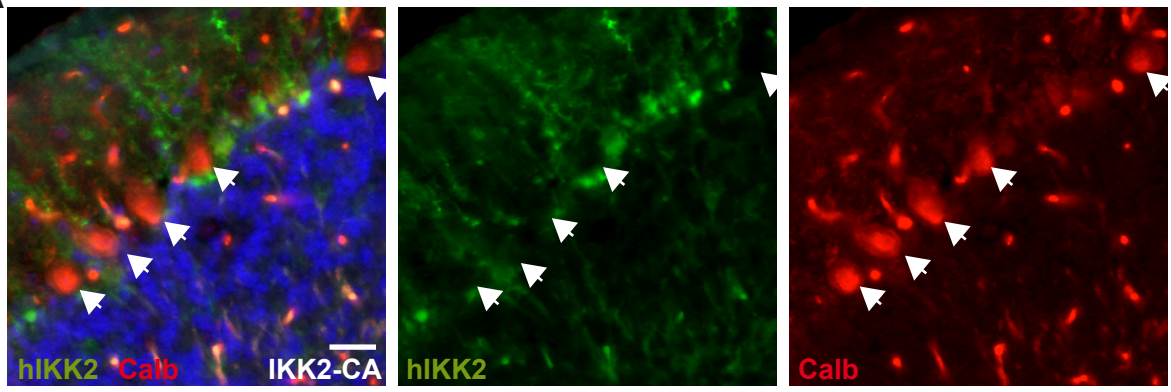
D



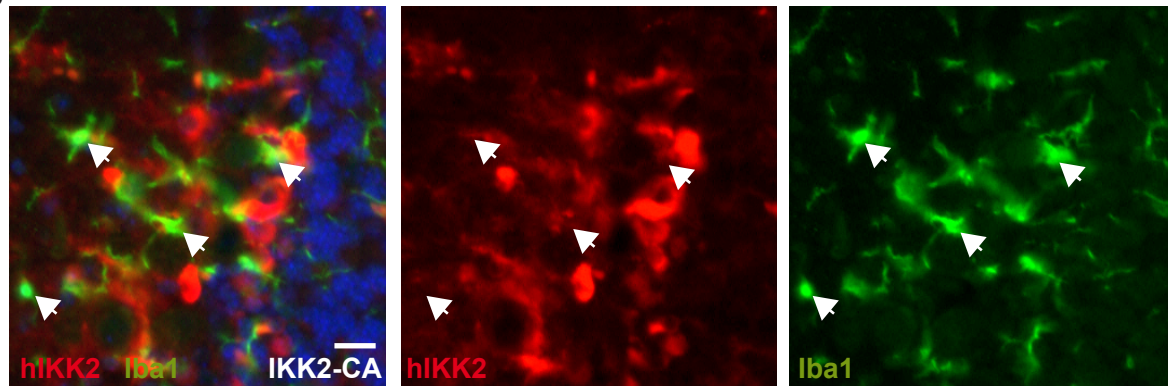
E



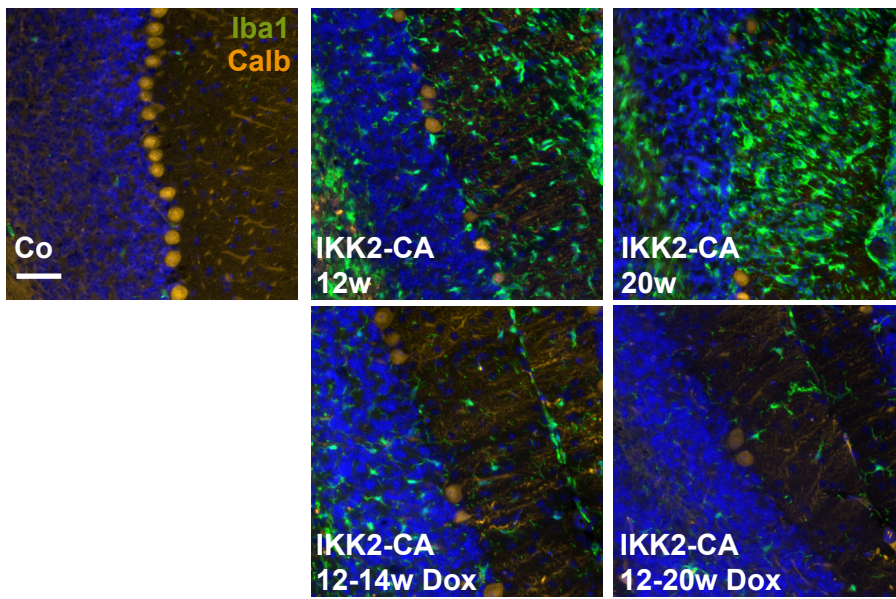
A



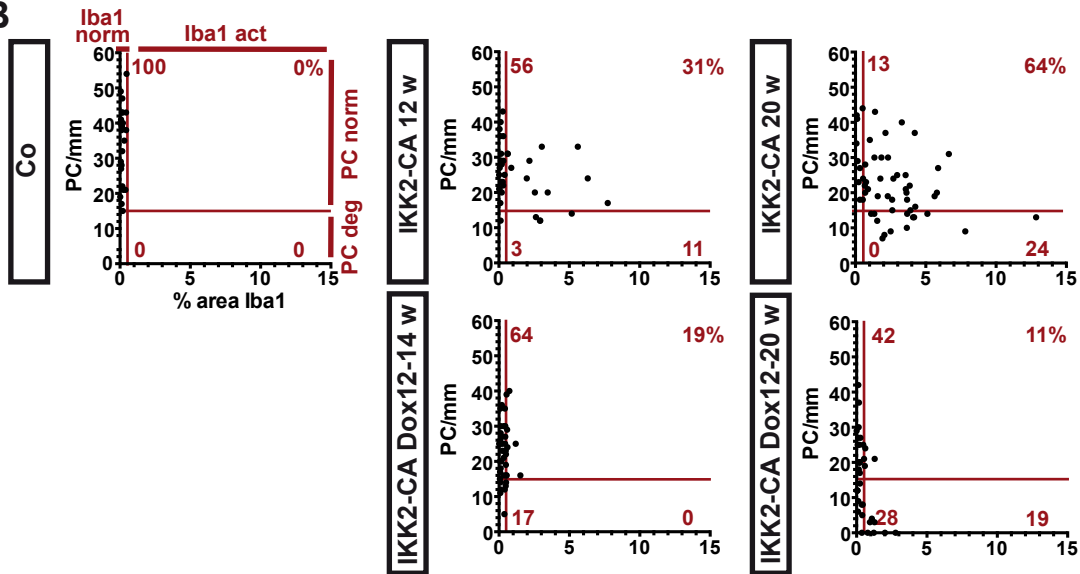
B



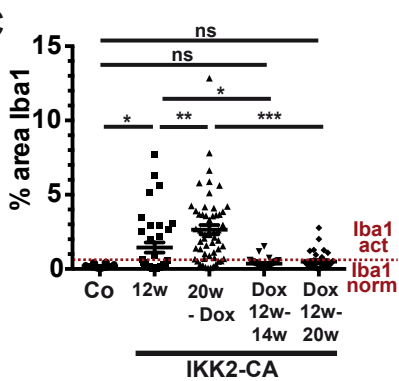
A



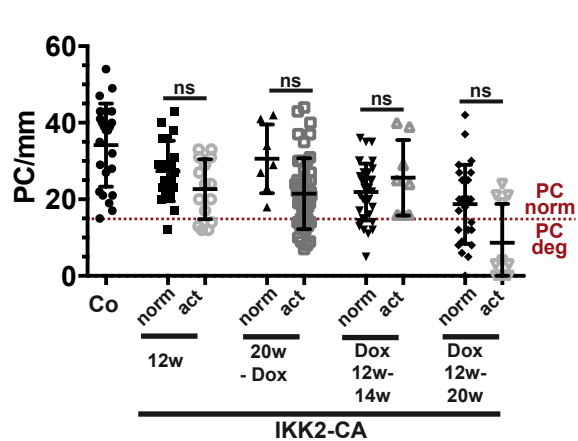
B



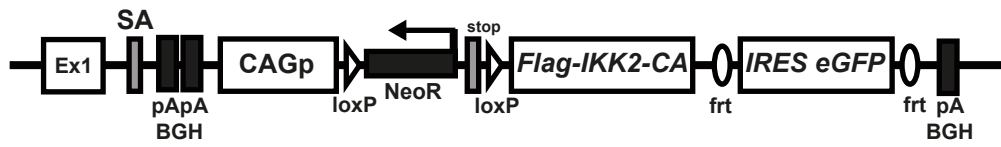
C



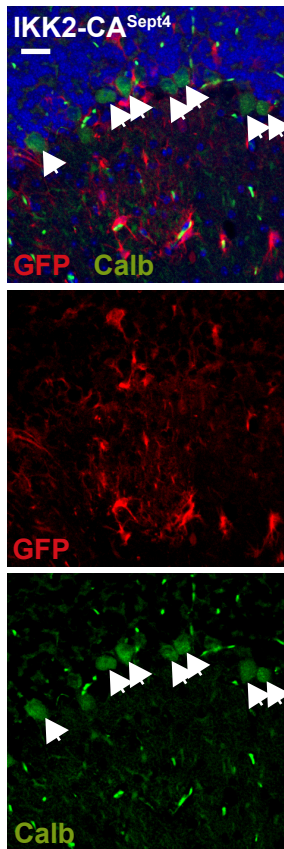
D



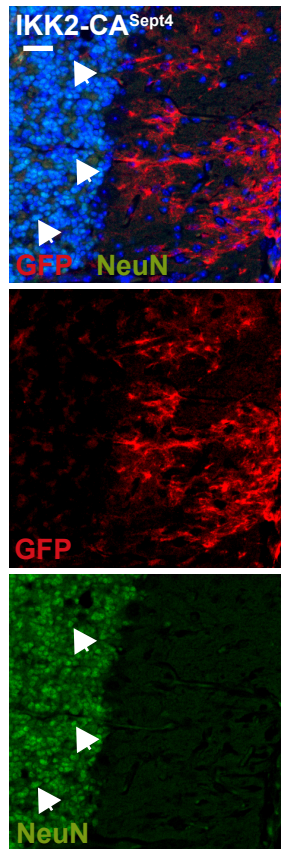
A ROSA26 locus (CAG-IKK2-CA-IRES-eGFP)



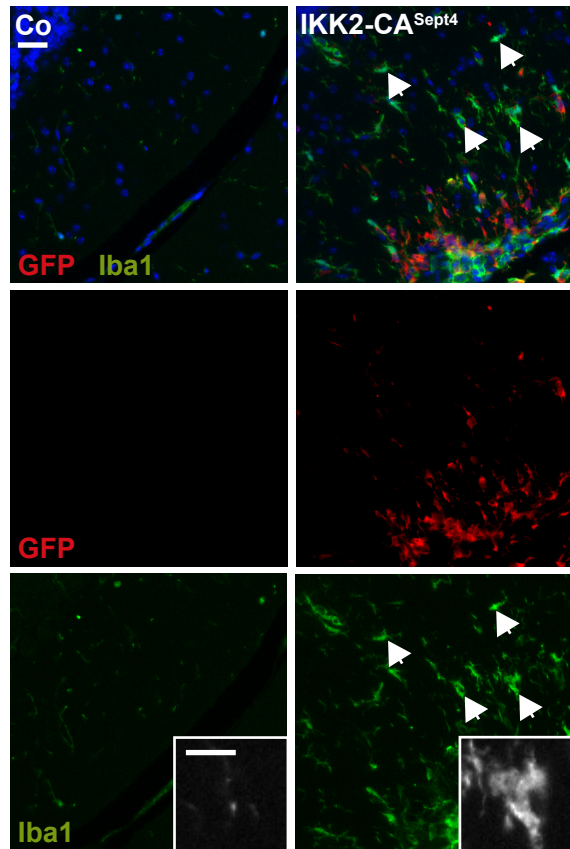
B



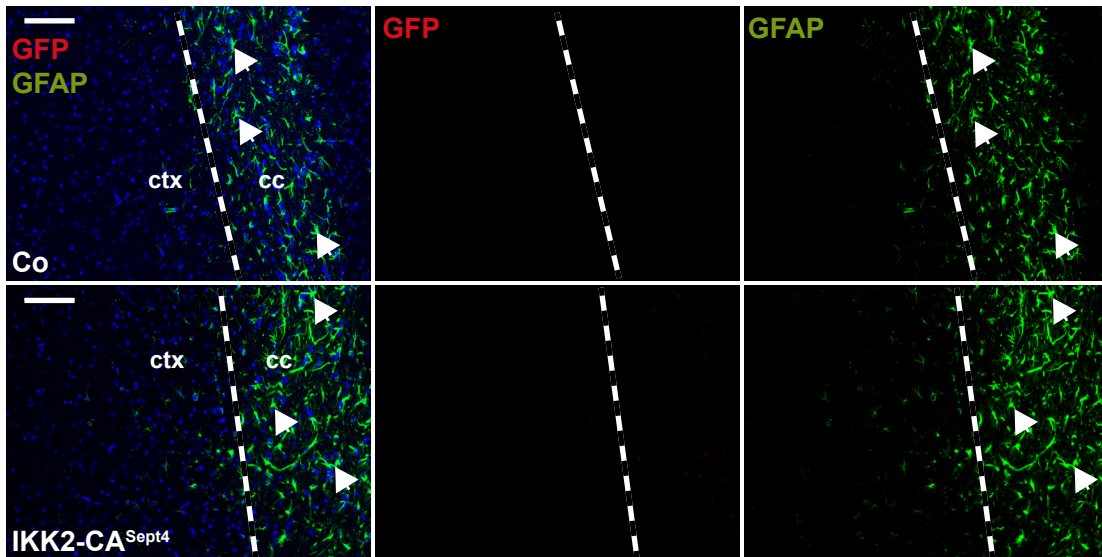
C



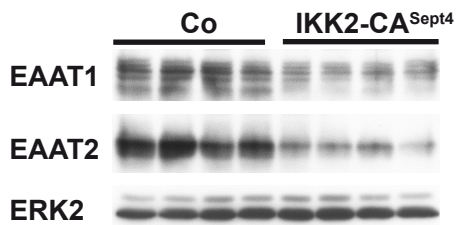
D



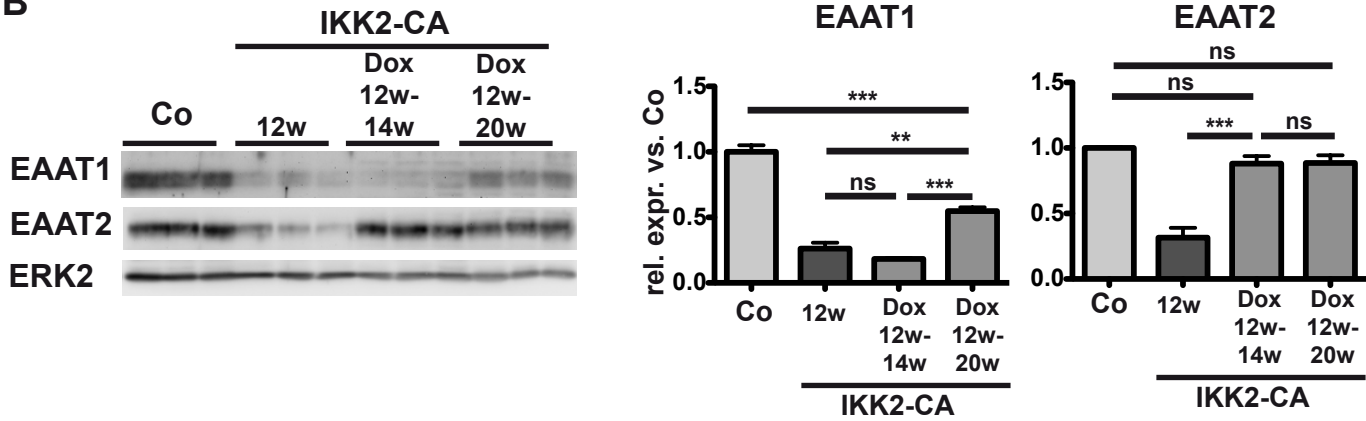
E



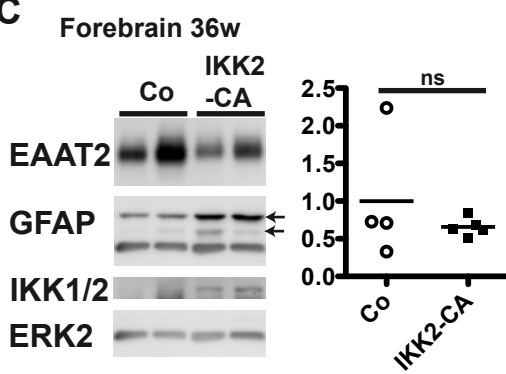
A



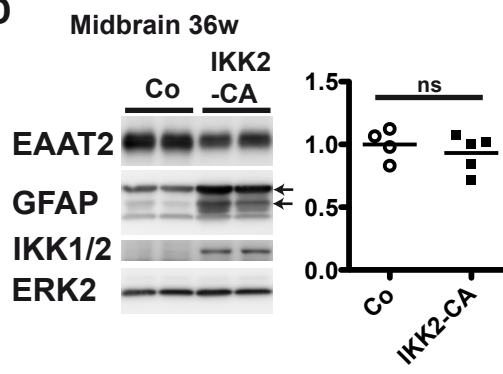
B



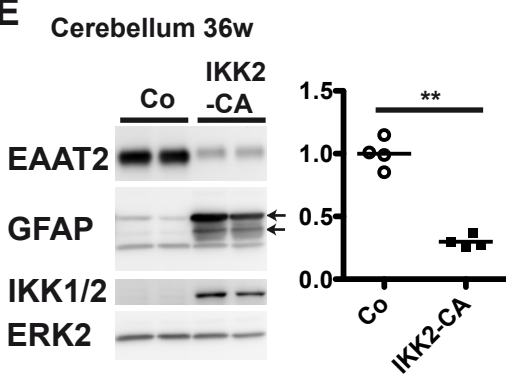
C



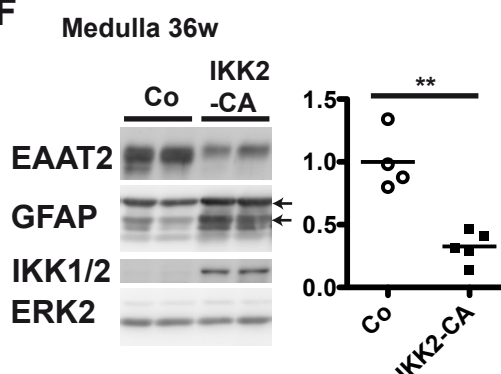
D



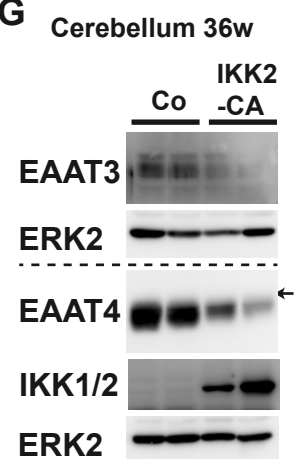
E



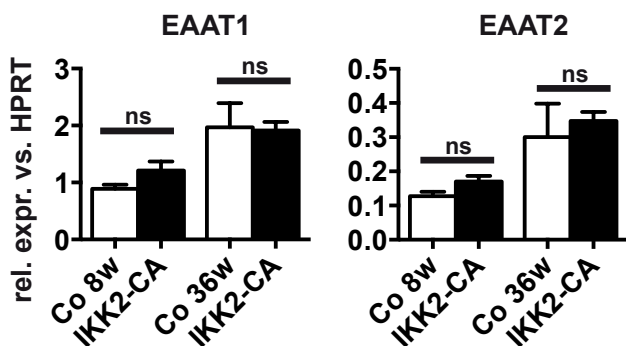
F



G



H



I

