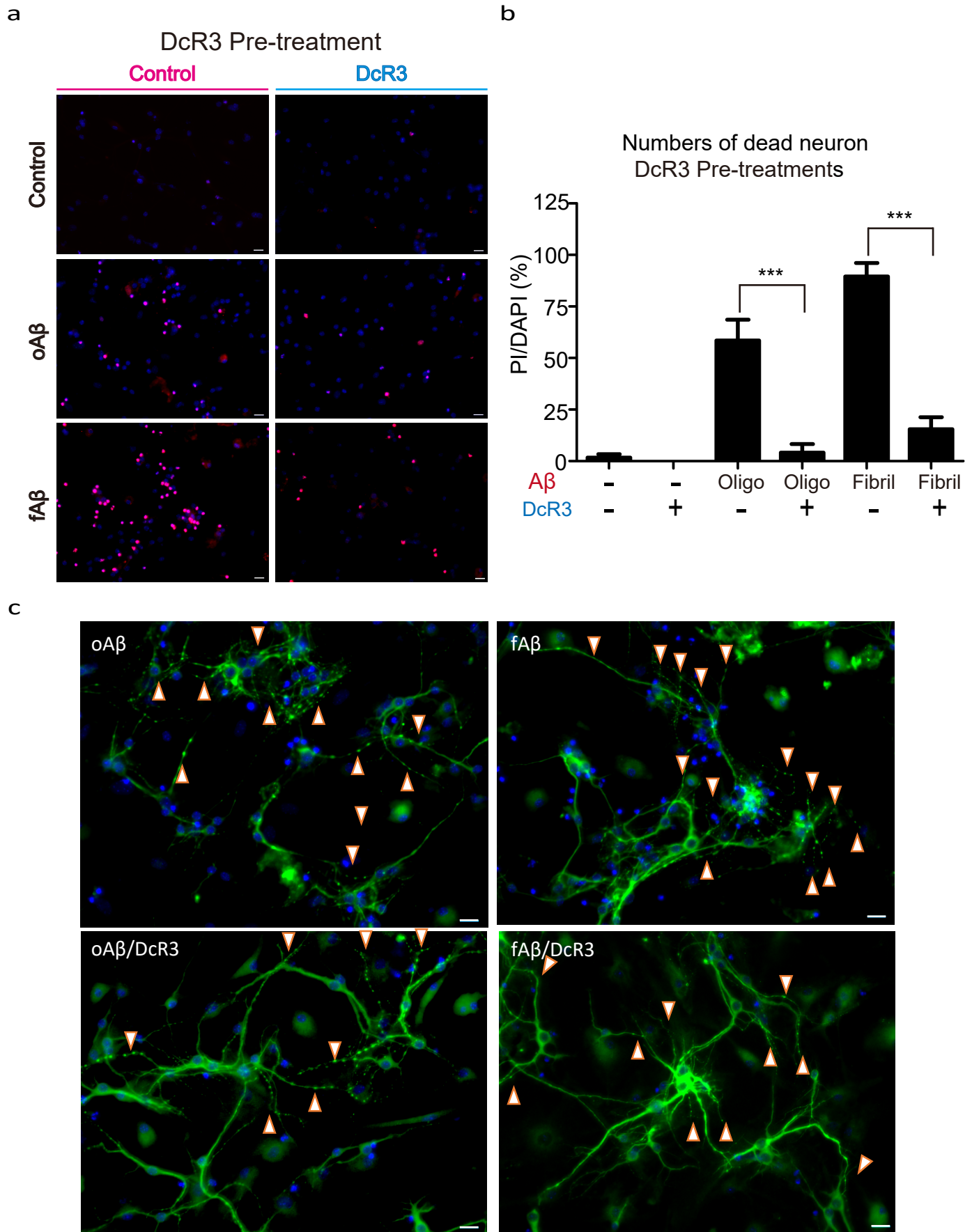


ADDITIONAL FILE 5: FIGURE S3



Additional file 5: Figure S3: DcR3 protect neurons against Aβ stress *in vitro*.

(a) Representative illustrations of PI staining used to measure the number of dead neurons after CM treatment. Red: dead cells (PI); Blue: nucleus (DAPI). *Scale bar: 20 μm.* (b) The ratio of PI/DAPI indicates the change in the number of dead neurons after treatment with the conditioned medium. (c) Primary neurons were labeled with neuronal markers (MAP2, Green), and nucleus (DAPI, Blue). Arrow indicated broken and swelling neurites. *Scale bar: 20 μm.*