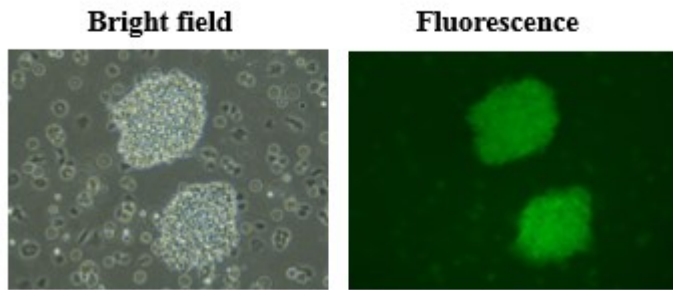
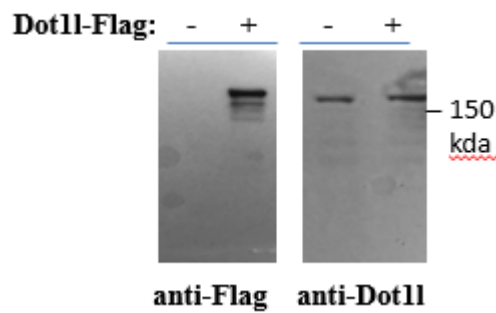


## Additional File 2

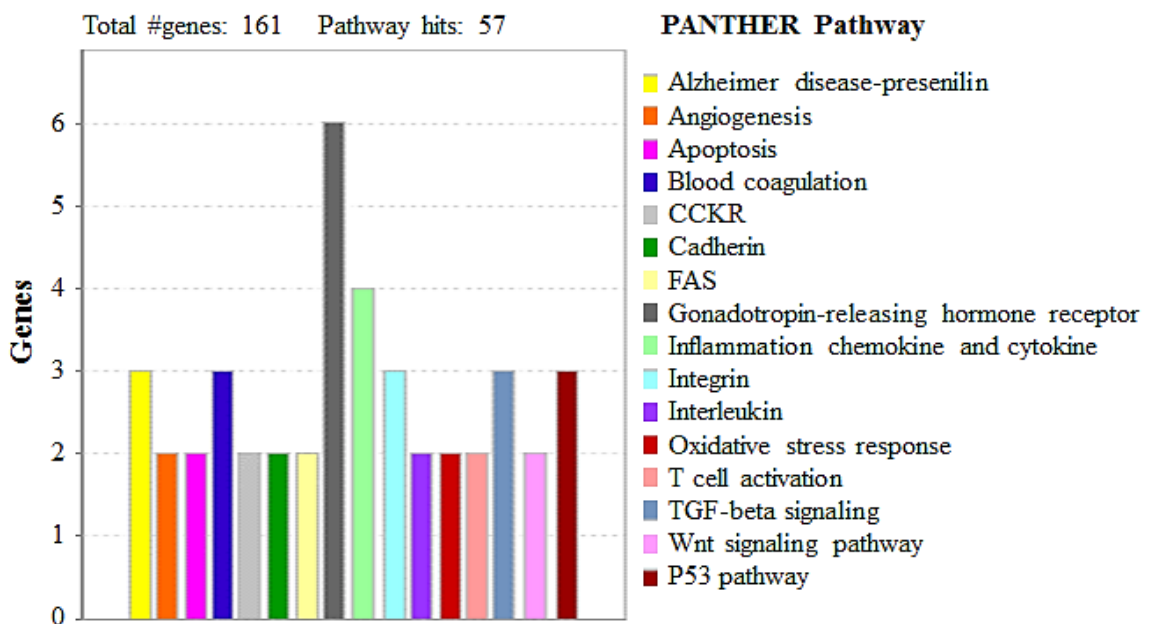
### CFU replating for MLL-AF9 transduced BM cells



**2A.** MLL-AF9-GFP transformed cells were plated at each round. Representative colony images (10x) were captured using a Ti-S inverted phase/fluorescent microscope with an SPOT cooled 2.0-megapixel digital microscope camera system (Nikon, Tokyo, Japan).



**2B. Validation of 3xFLAG-DOT1L expression.** Lentivirus expressing 3xFLAG-DOT1L has been pooled and transduced to proliferating cells, followed by Western blotting using antibodies specifically against the Flag tag or Dot1l protein (purchased from Sigma and Abcam respectively). +: with viral transduction; -: without transduction.



**2C.** PANTHER (Protein ANalysis THrough Evolutionary Relationships) classification system showing the enriched pathways that were affected by *Sall4* deletion.