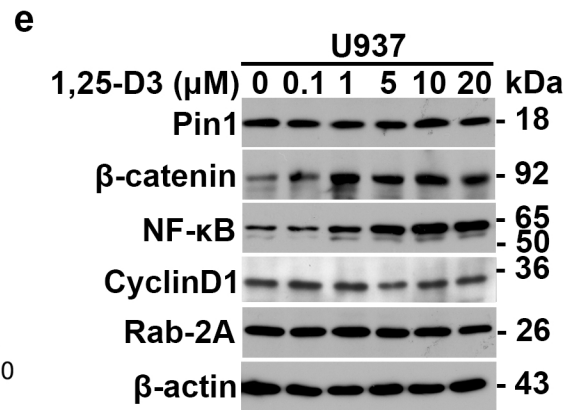
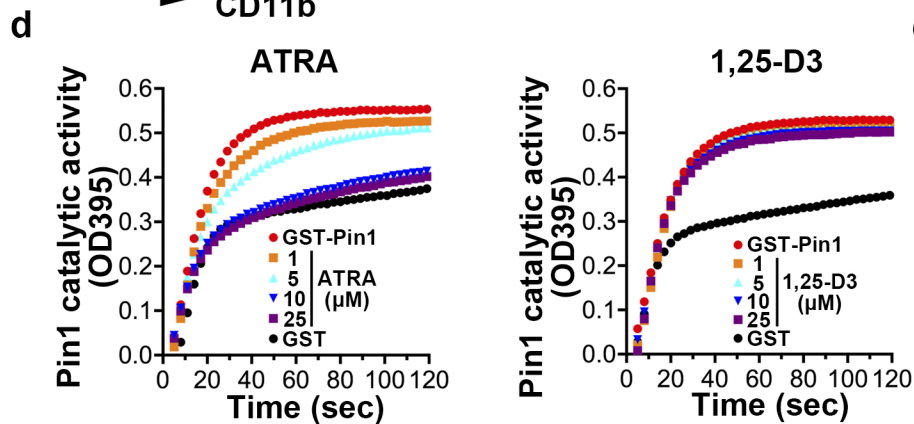
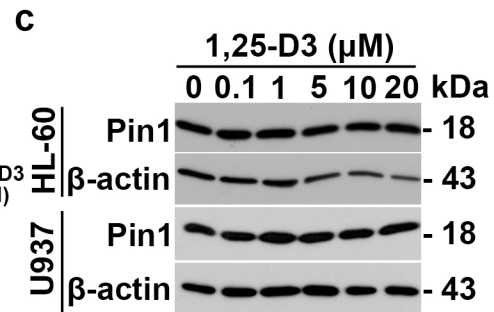


**b**

treatment	HL-60	U937	KG-1a
	CD11b+ (%)		
Isotype	0.2	0.1	0.5
Vec	5.1	4.0	0.6
shPin1	7.6	7.9	1.5
ATRA ( $\mu\text{M}$ )	0	10.5	10.0
	0.1	36.8	88.7
	1	43.1	93.1
	10	86.6	92.8
1,25-D3 ( $\mu\text{M}$ )	0	10.9	10.4
	0.1	78.2	87.8
	1	86.4	90.7
	10	98.3	96.5



Supplementary Figure 3