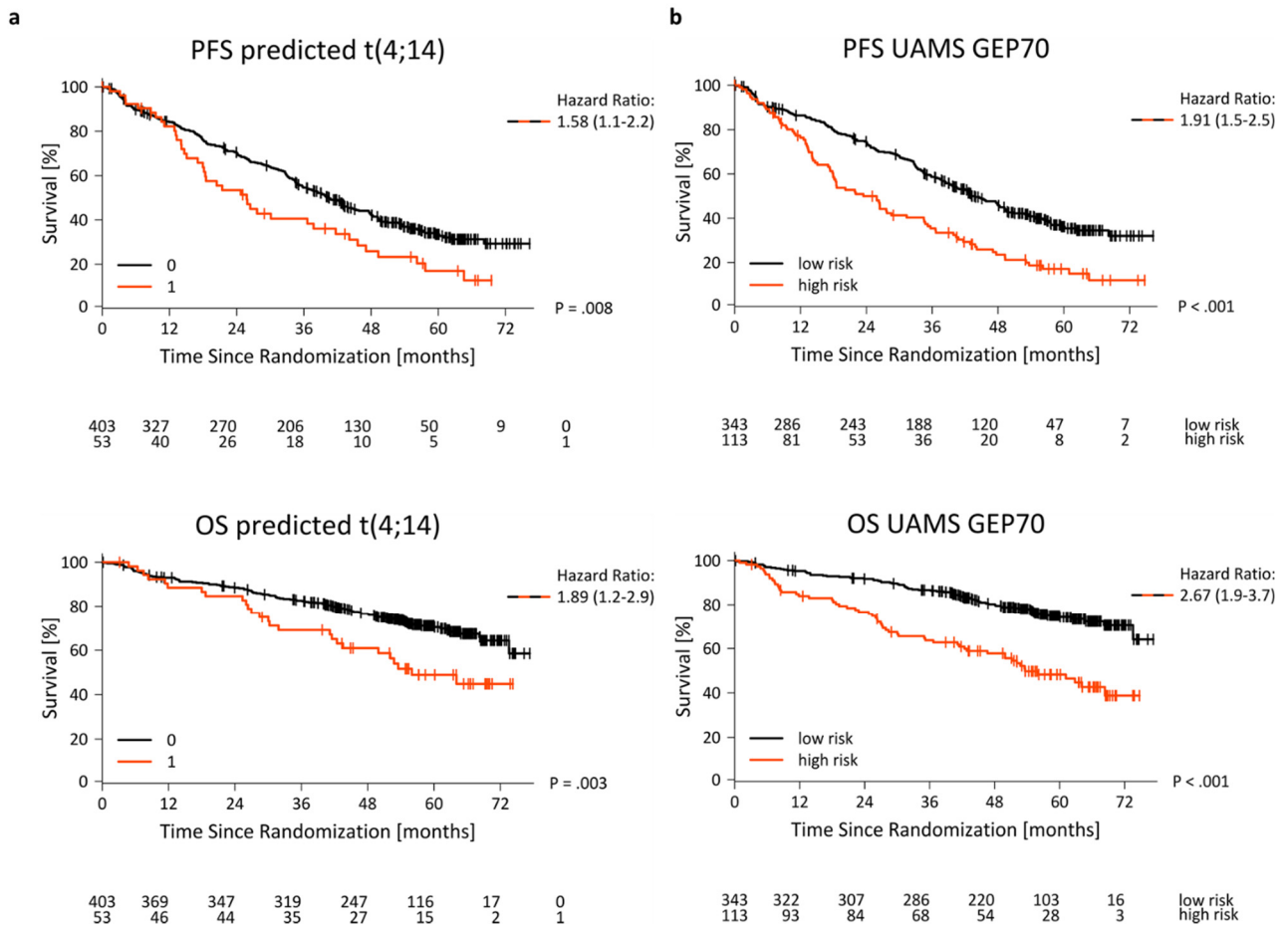
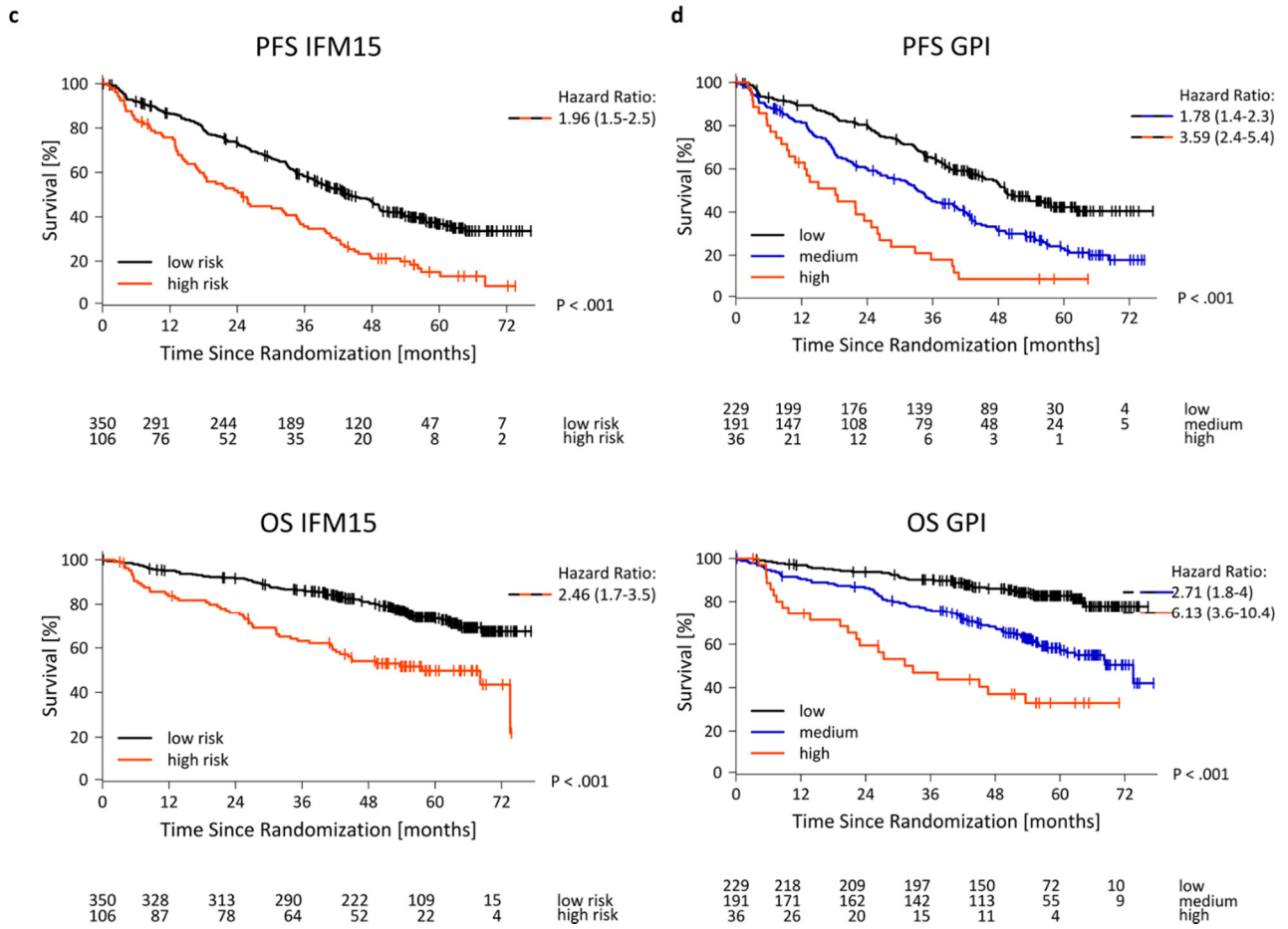


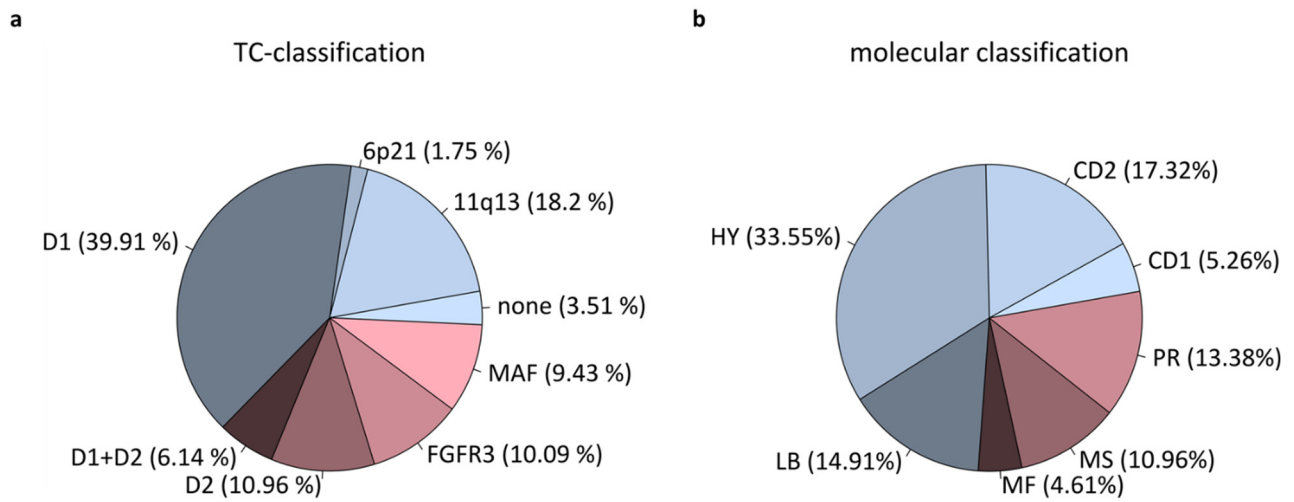
## Additional file 2

**Figure S1. Gene expression-based risk assessment as implemented in the GEP-R.**





Shown are progression-free (PFS) and overall survival (OS) for (a) absence (0) vs. presence (1) of GEP-predicted t(4;14), (b) low vs. high risk according to GEP70-score, (c) low vs. high risk according to IFM15-score, as well as (D) GPI<sup>low</sup> vs. GPI<sup>medium</sup> vs. GPI<sup>high</sup>.

**Figure S2. Grouping myeloma into different subentities as implemented in the GEP-R.**

Shown are (a) the TC- and (b) the molecular classification of multiple myeloma. Percentages of patients in the different subgroups are given in brackets.