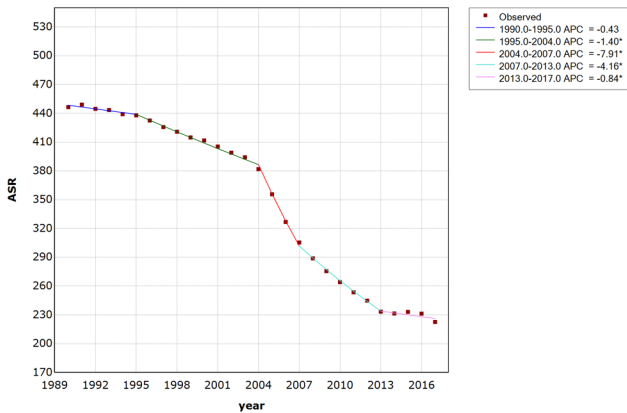
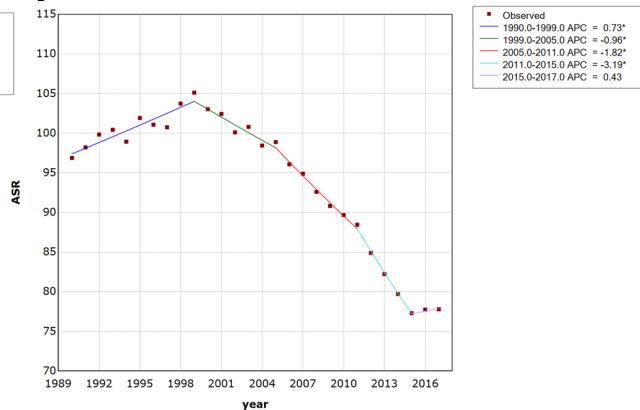


All: 4 Joinpoints



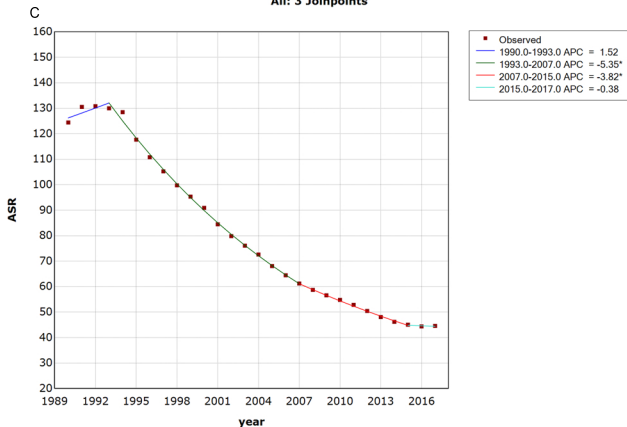
* Indicates that the Annual Percent Change (APC) is significantly different from zero at the alpha = 0.05 level.
 Final Selected Model: 4 Joinpoints.

All: 4 Joinpoints



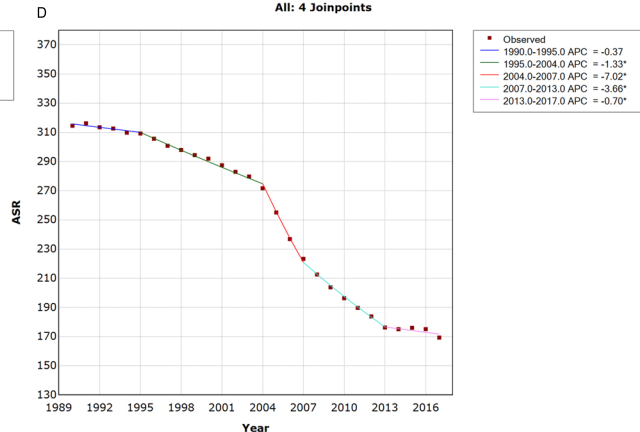
* Indicates that the Annual Percent Change (APC) is significantly different from zero at the alpha = 0.05 level.
 Final Selected Model: 4 Joinpoints.

All: 3 Joinpoints



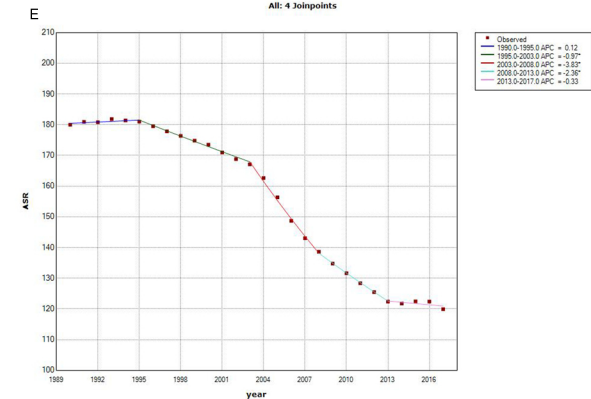
* Indicates that the Annual Percent Change (APC) is significantly different from zero at the alpha = 0.05 level.
 Final Selected Model: 3 Joinpoints.

All: 4 Joinpoints



* Indicates that the Annual Percent Change (APC) is significantly different from zero at the alpha = 0.05 level.
 Final Selected Model: 4 Joinpoints.

All: 4 Joinpoints



* Indicates that the Annual Percent Change (APC) is significantly different from zero at the alpha = 0.05 level.
 Final Selected Model: 4 Joinpoints.