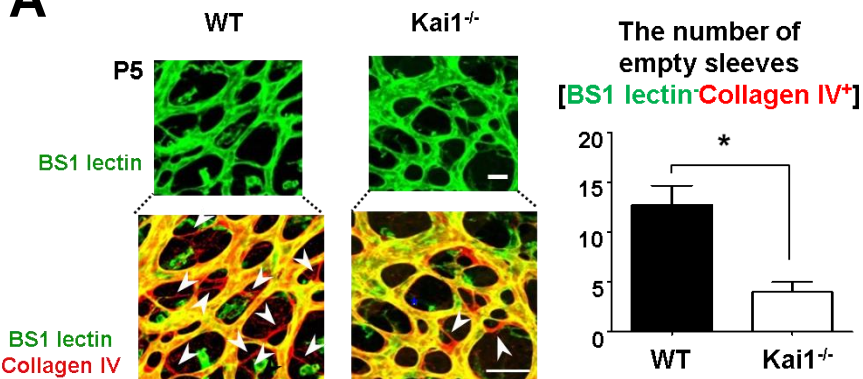
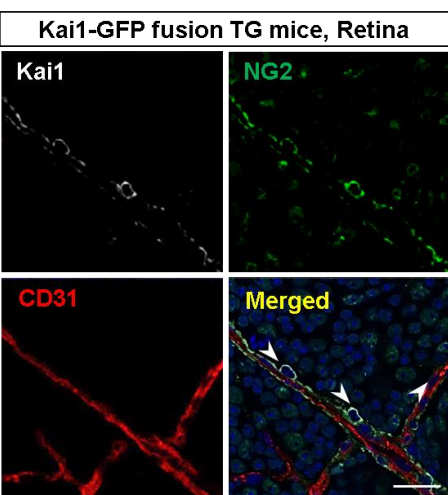


# Supplemental Figure 1

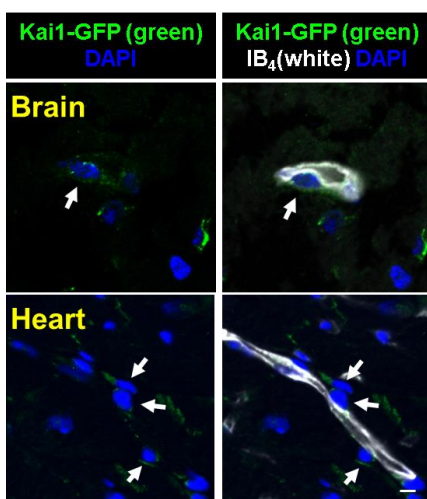
## A



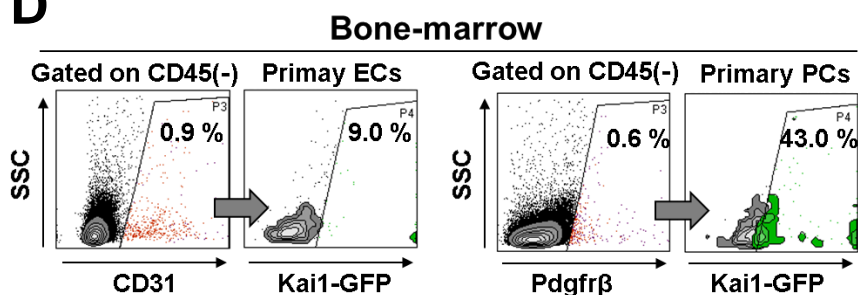
## B



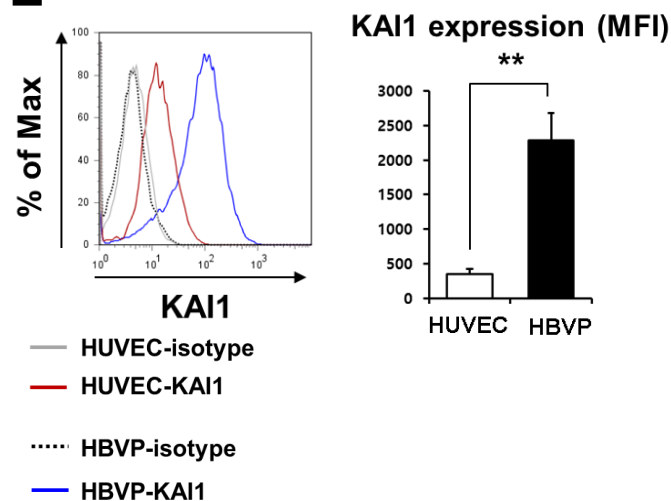
## C



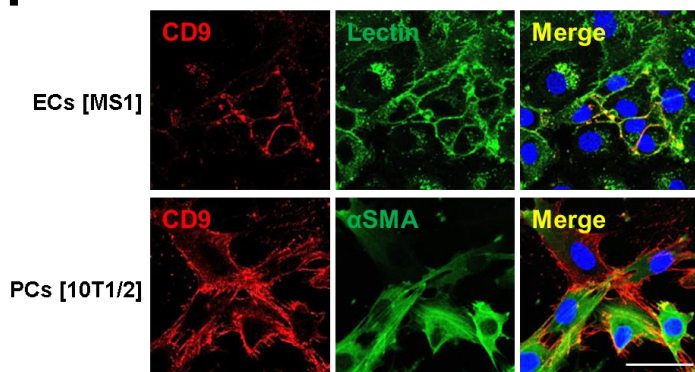
## D



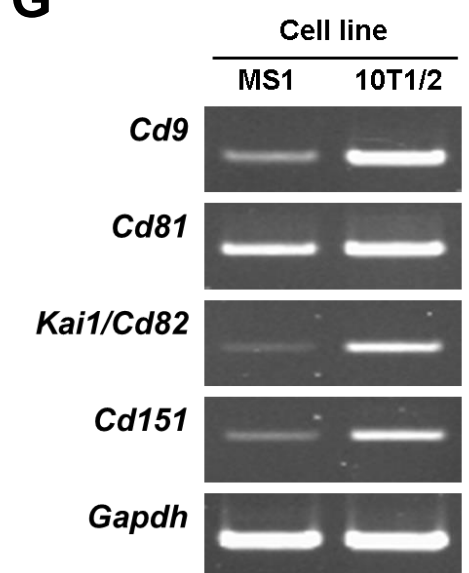
## E



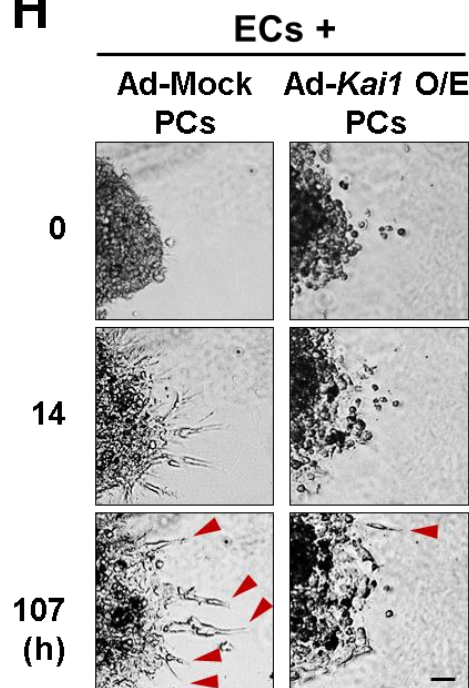
## F



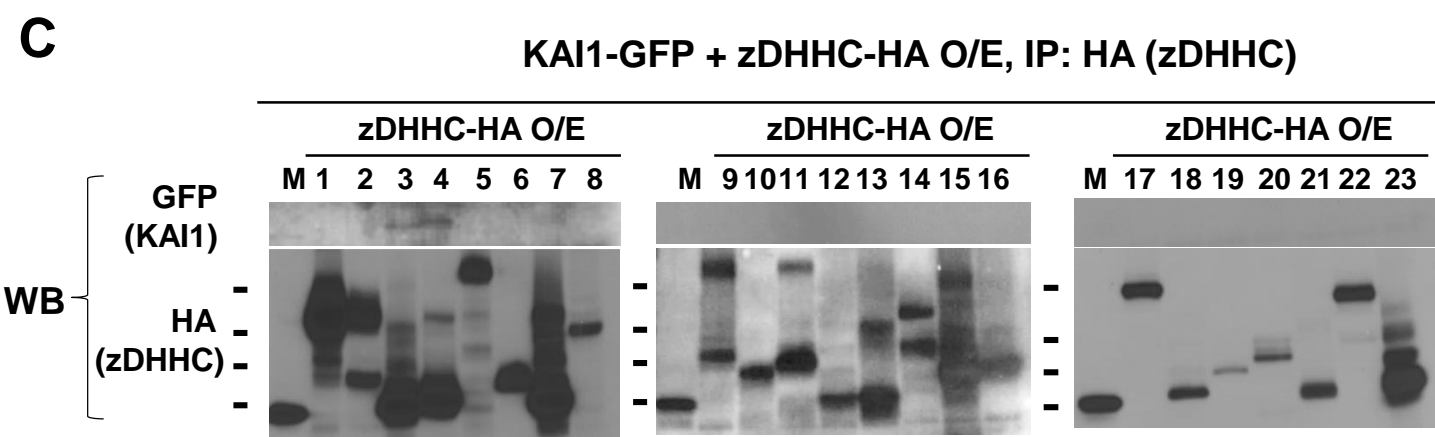
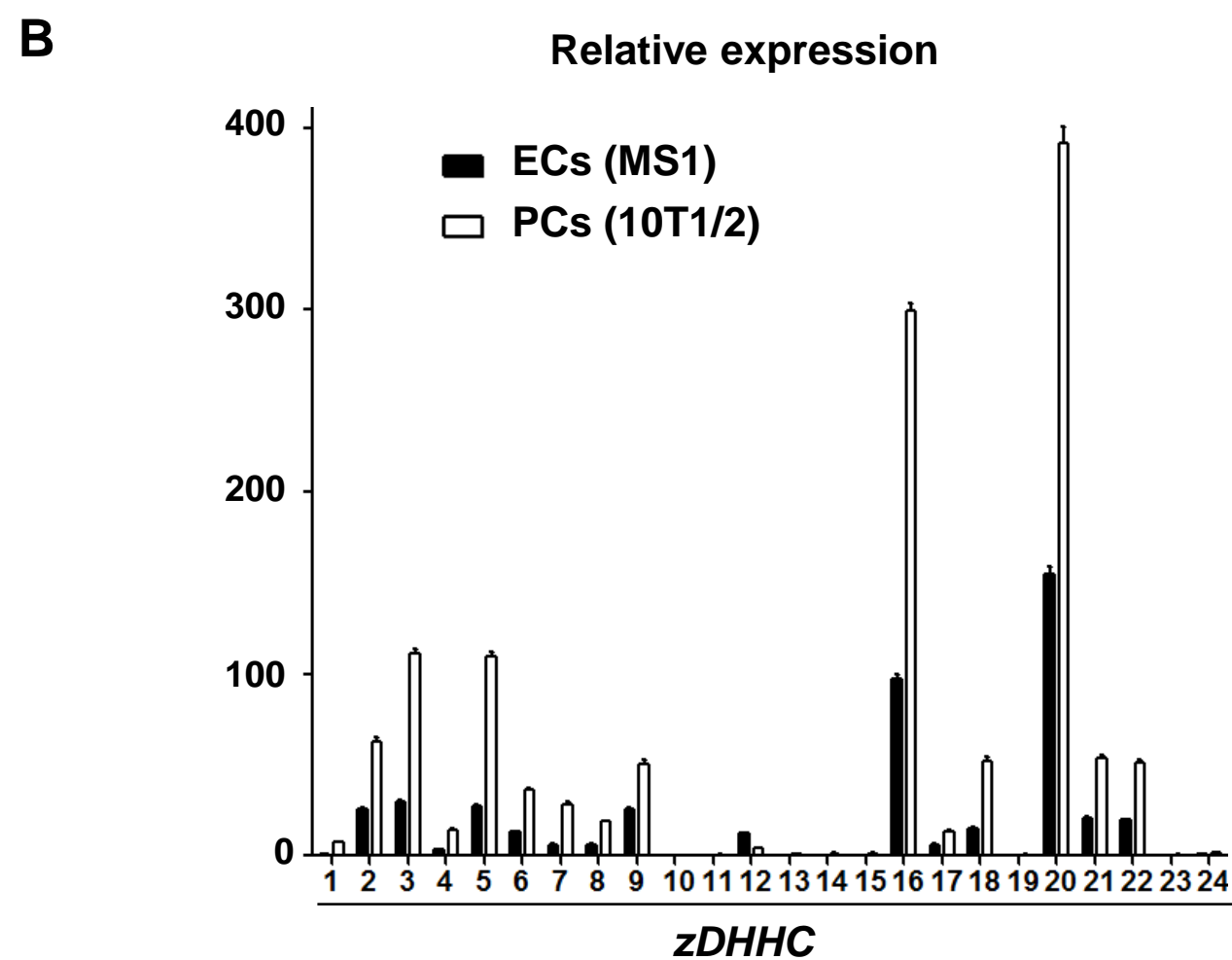
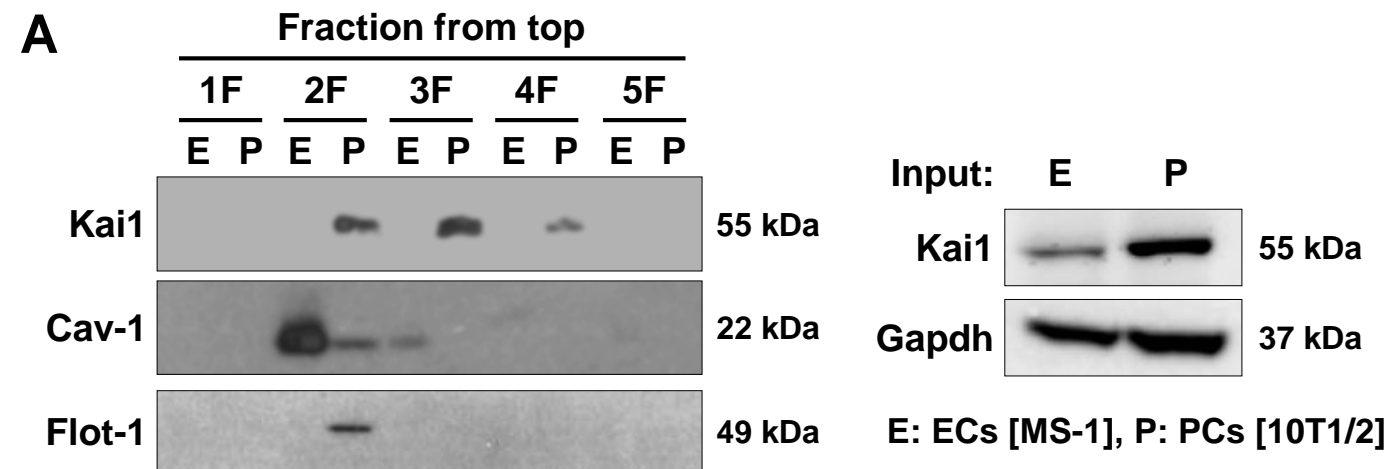
## G



## H

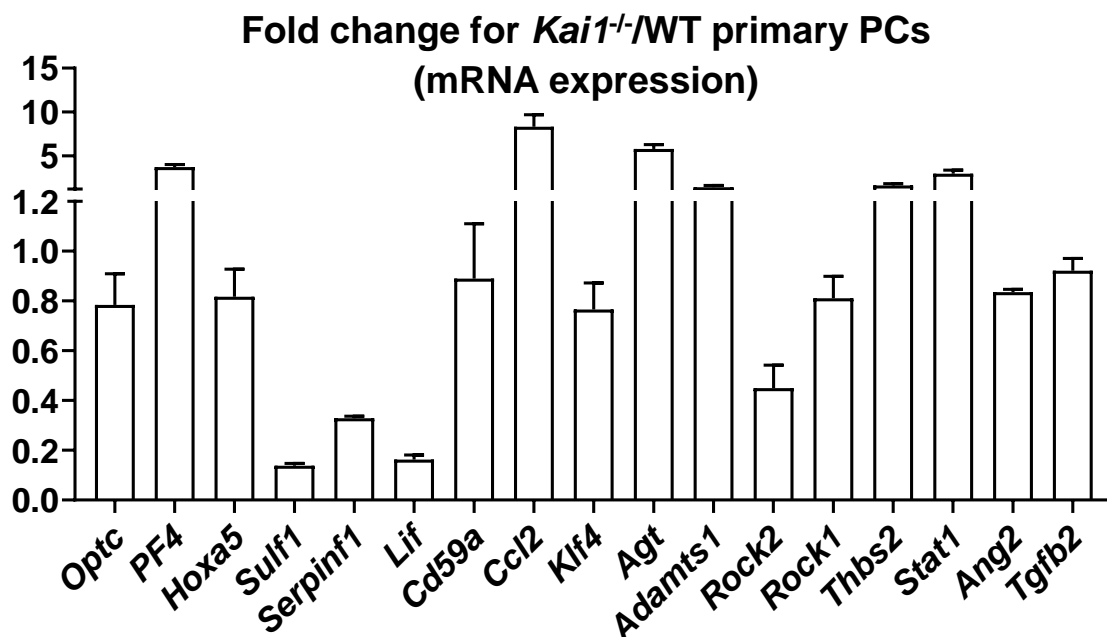


# Supplemental Figure 2

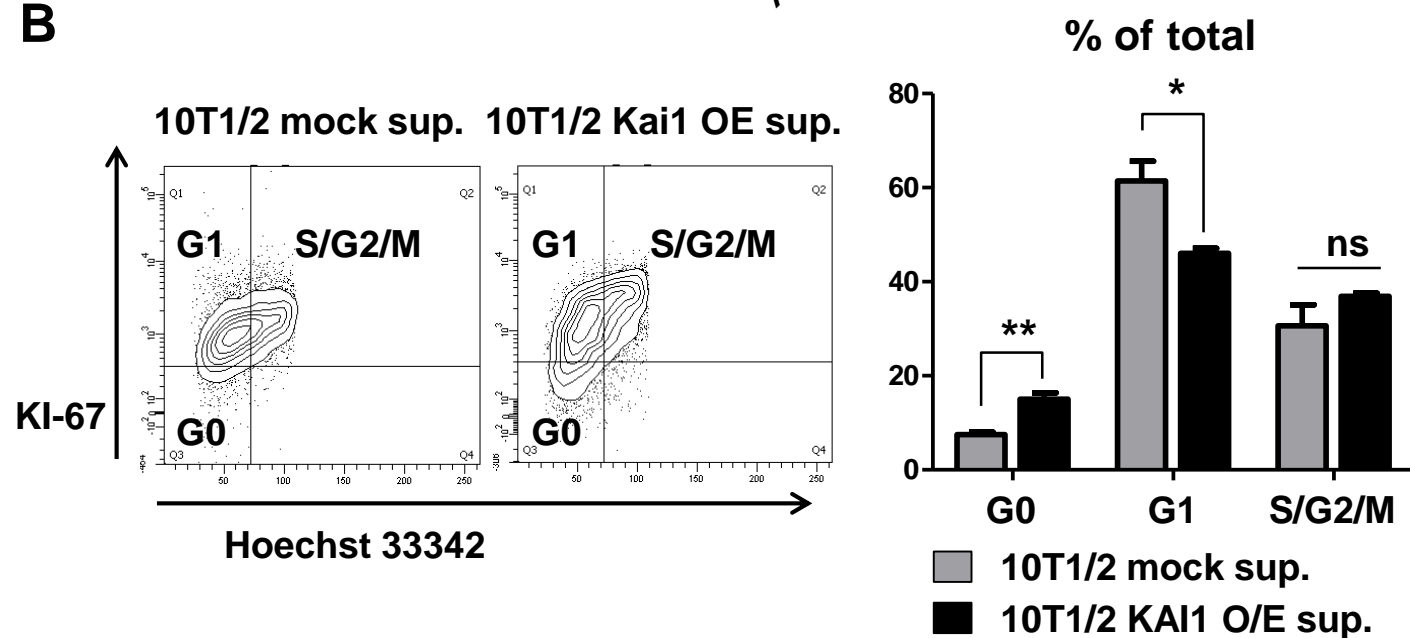


# Supplemental Figure 3

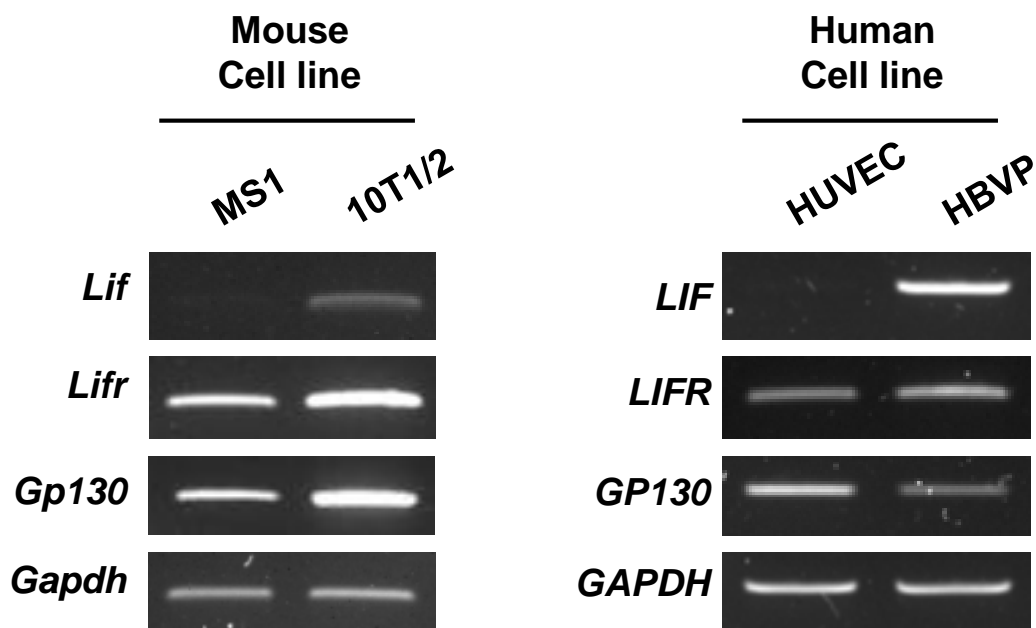
## A



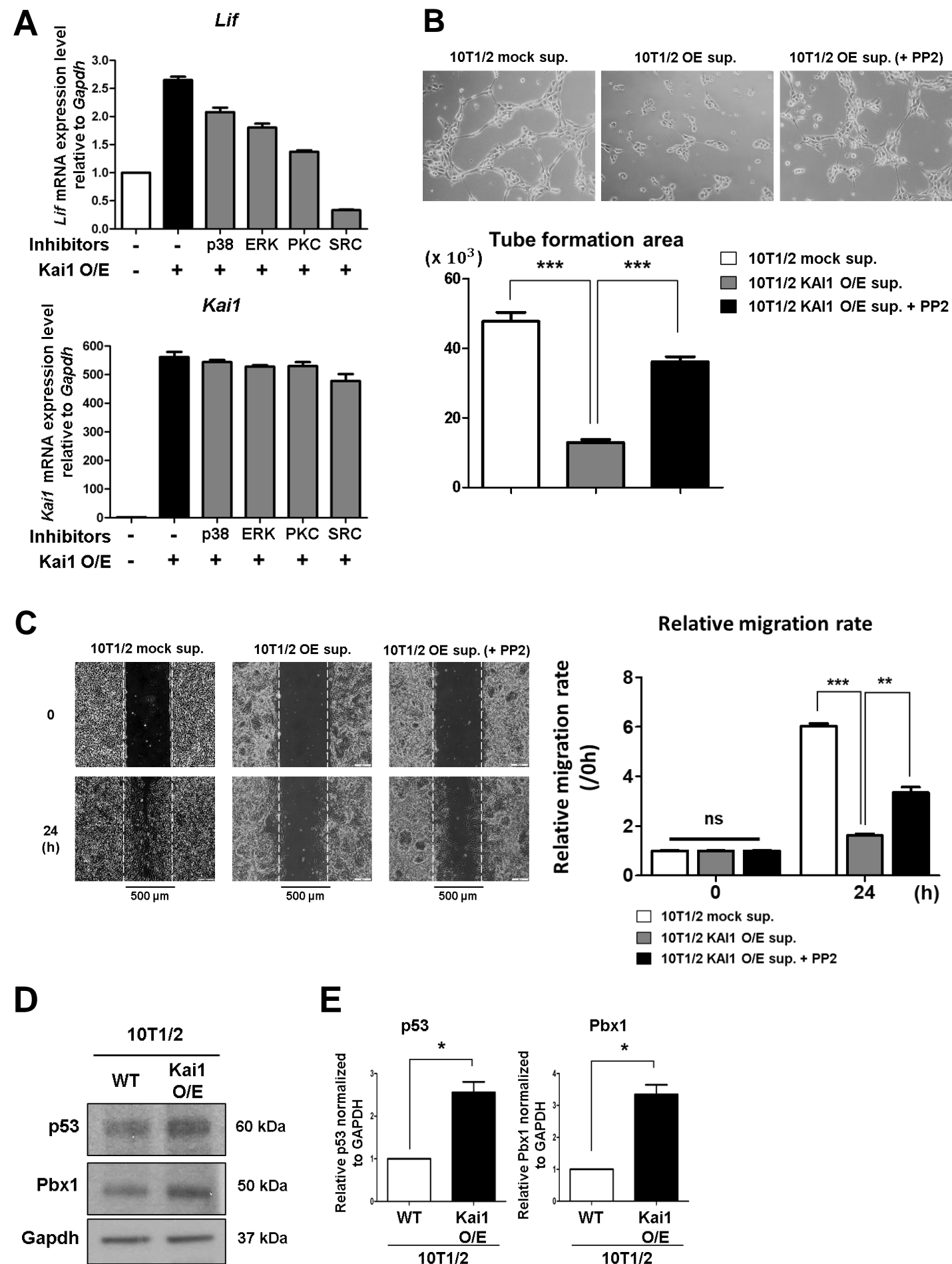
## B



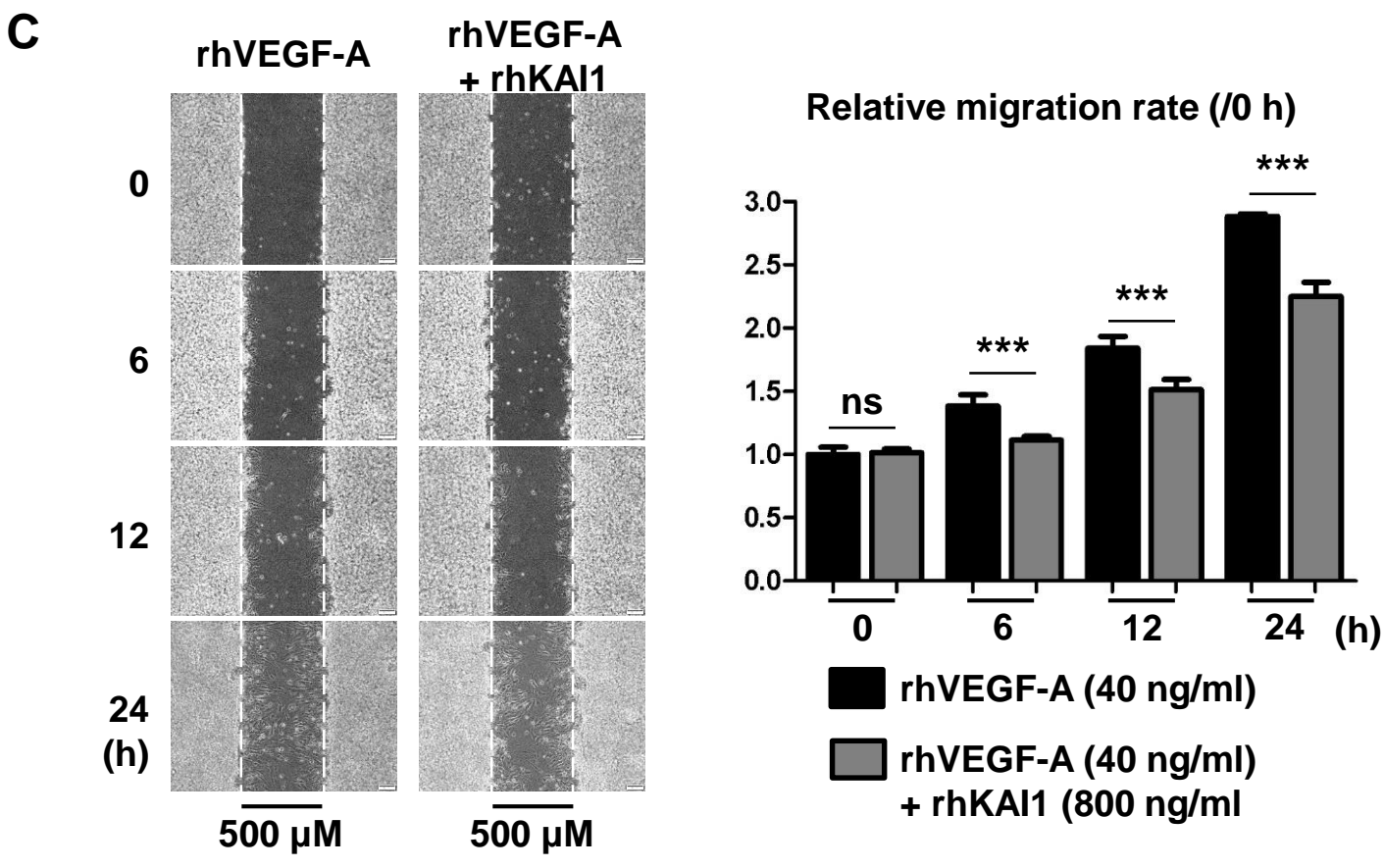
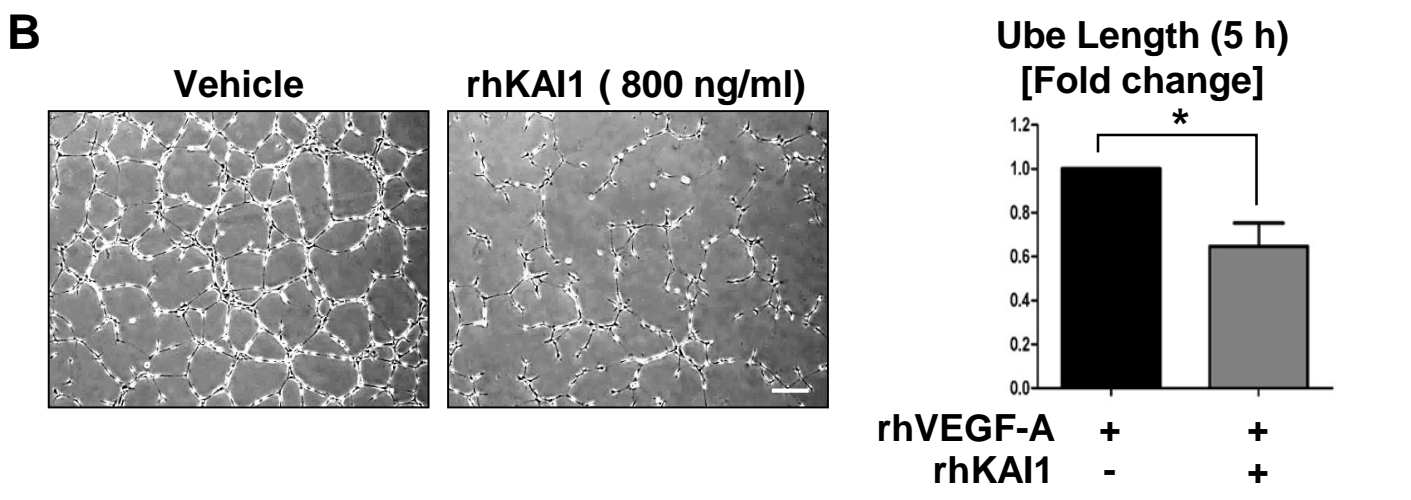
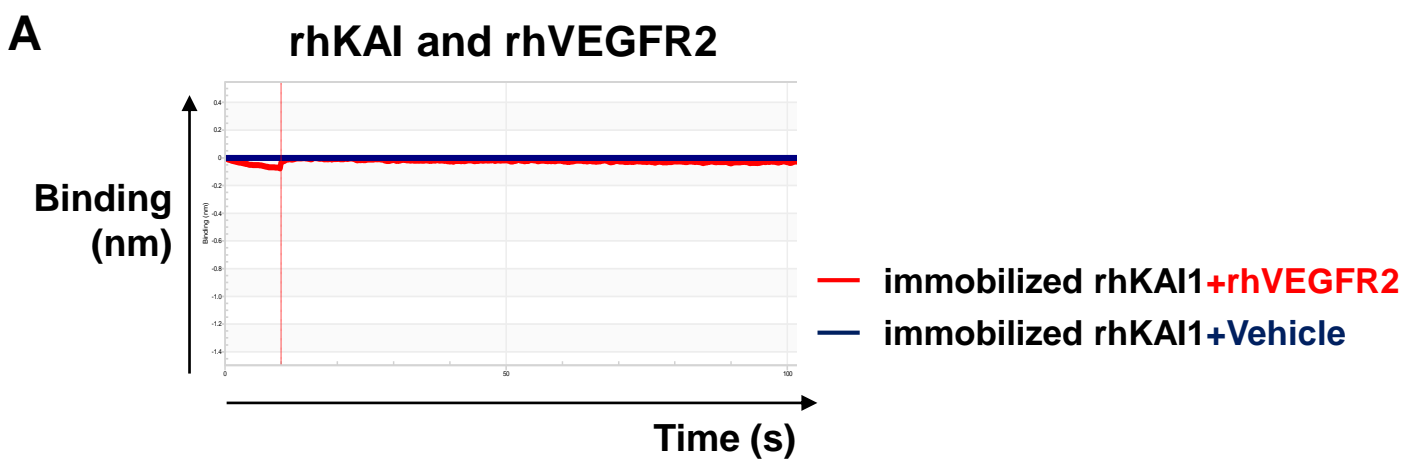
## C



# Supplemental Figure 4

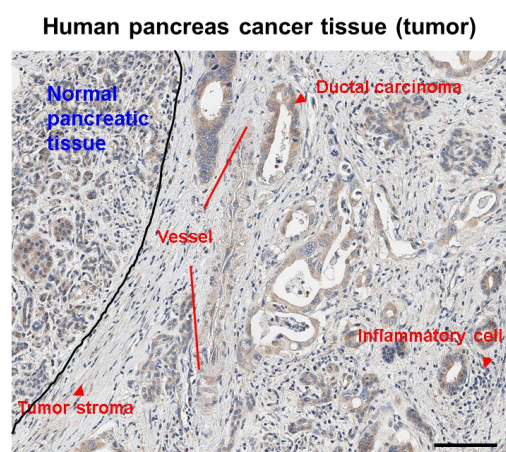
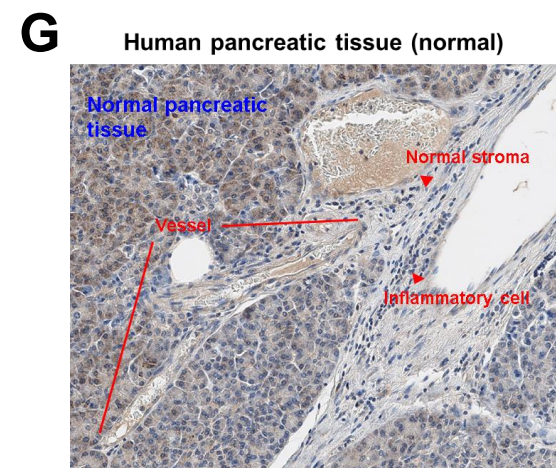
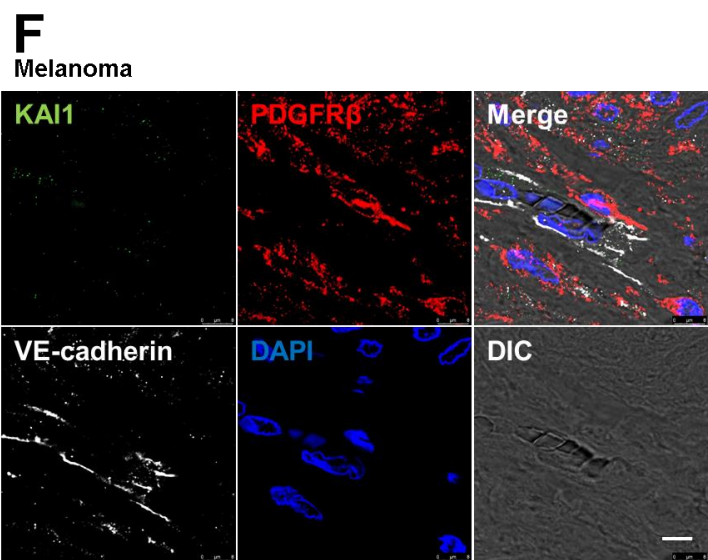
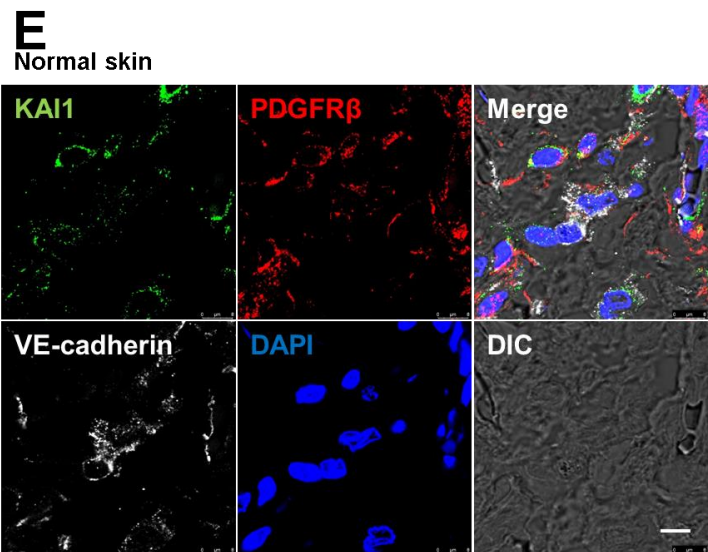
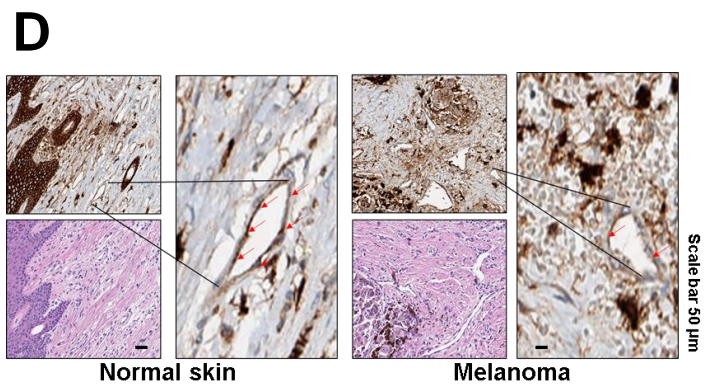
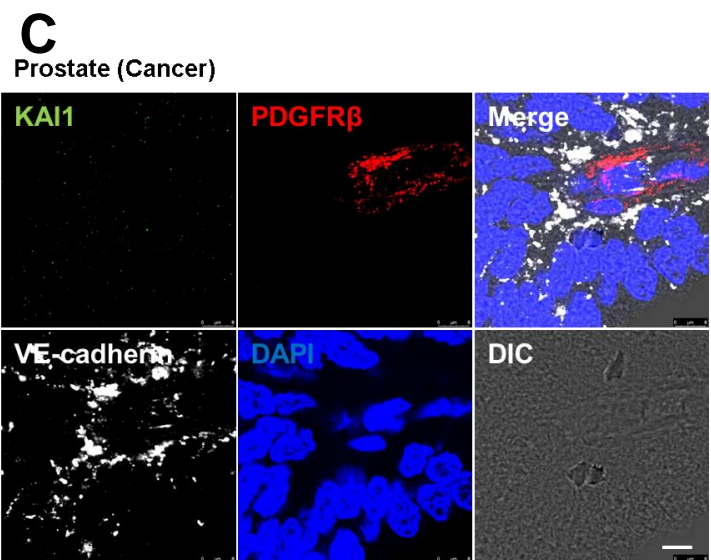
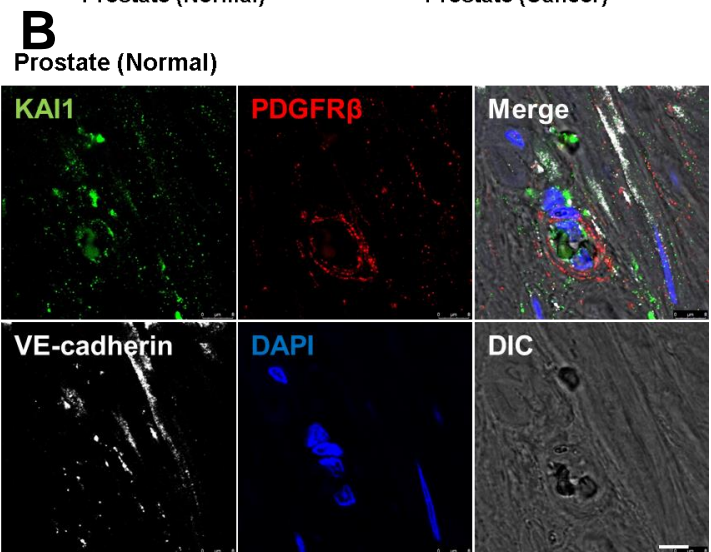
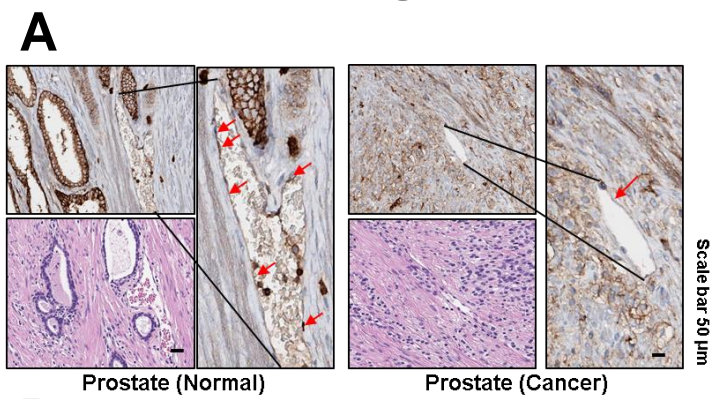


# Supplemental Figure 5



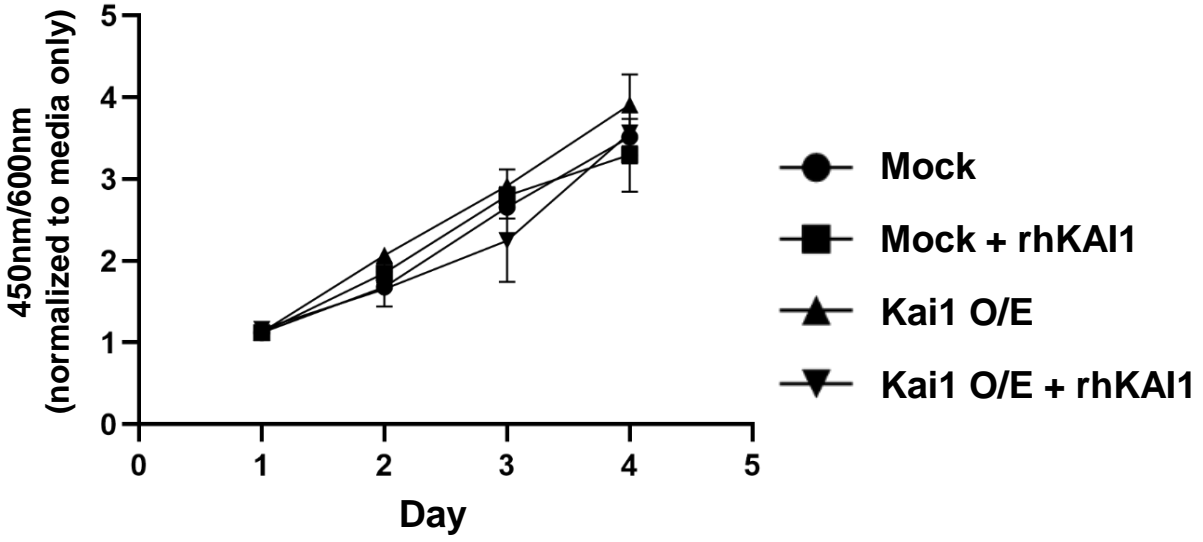
500  $\mu$ m      500  $\mu$ m

# Supplemental Figure 6

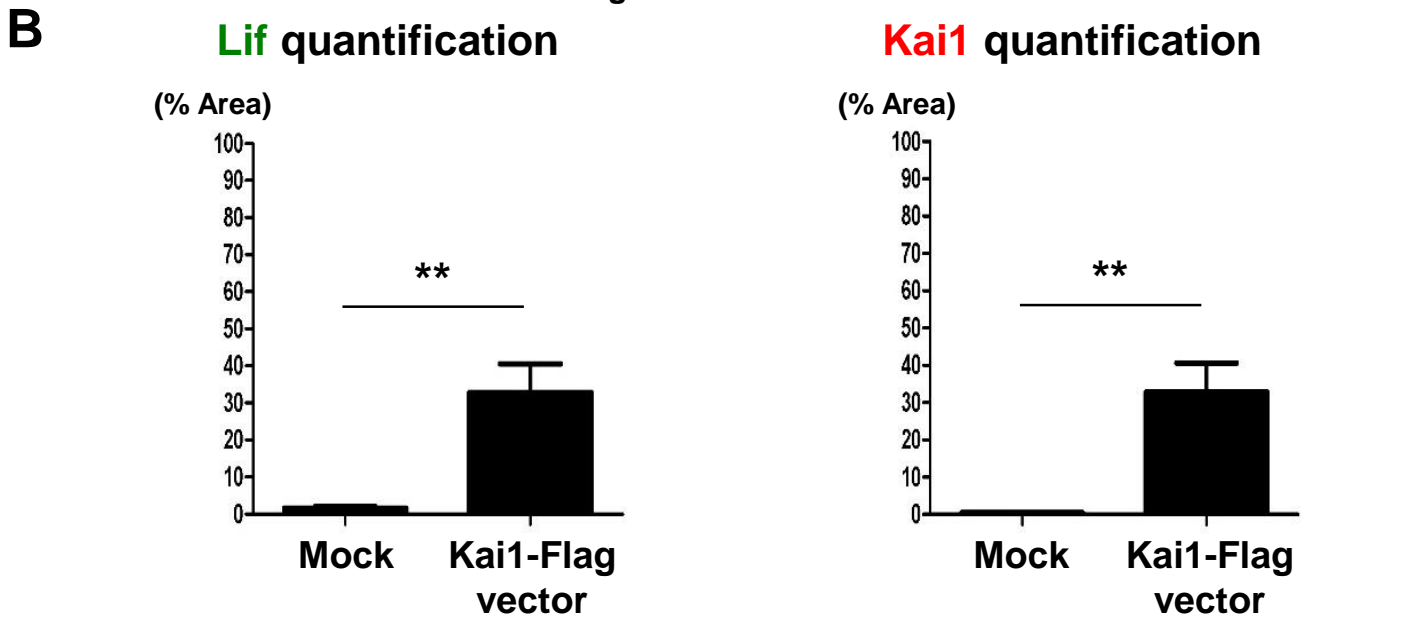
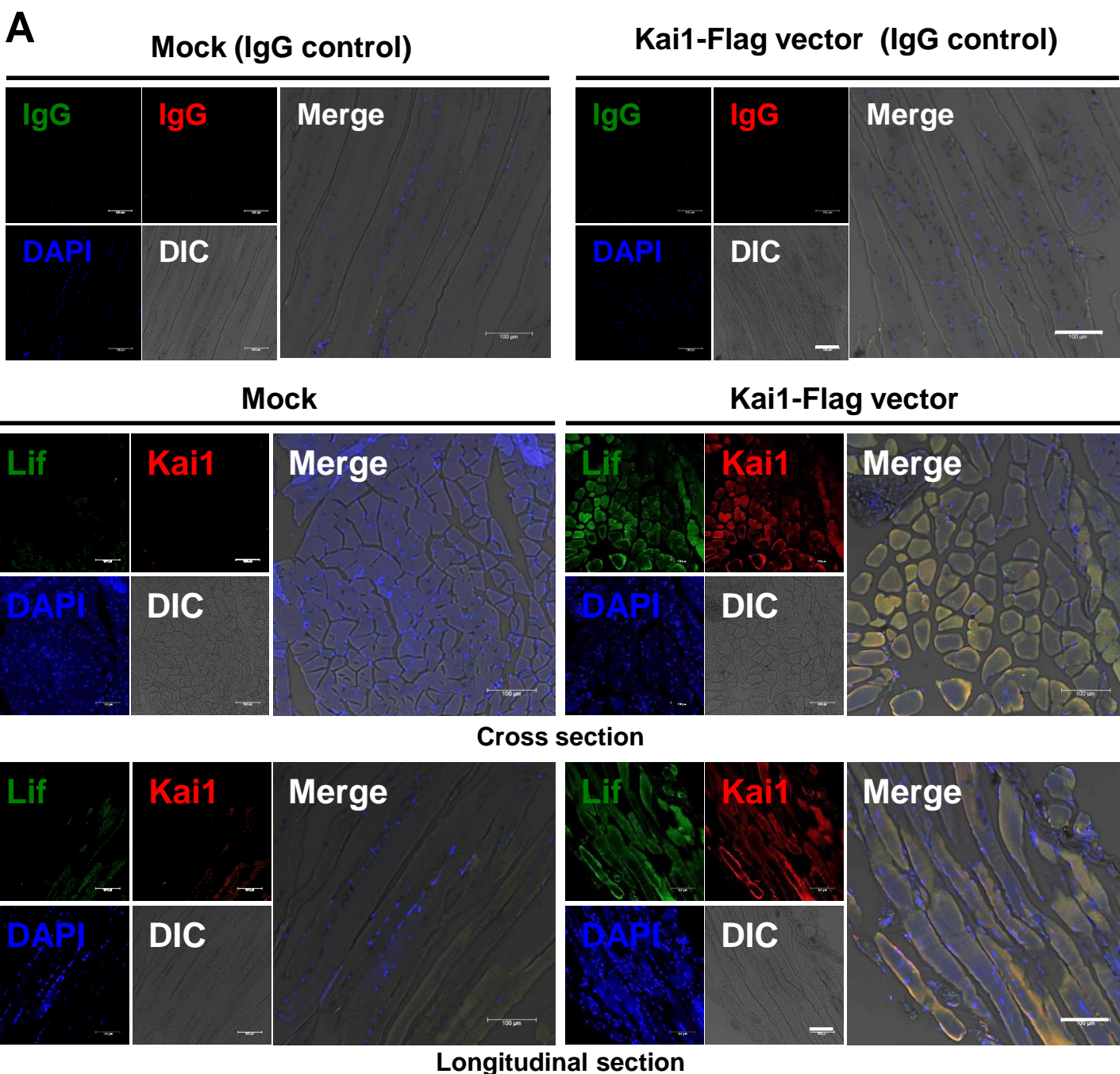


# Supplemental Figure 7

## B16 (Melanoma cells)



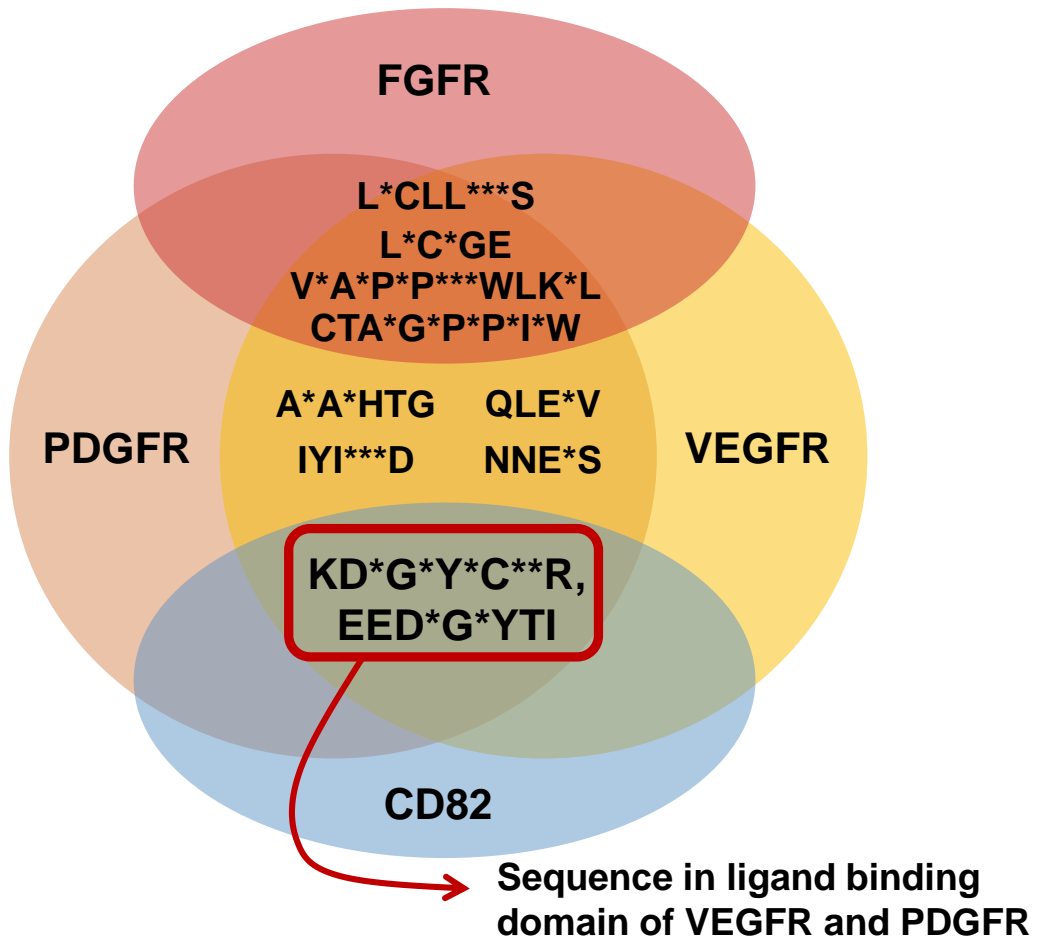
# Supplemental Figure 8





# Supplemental Figure 9

A



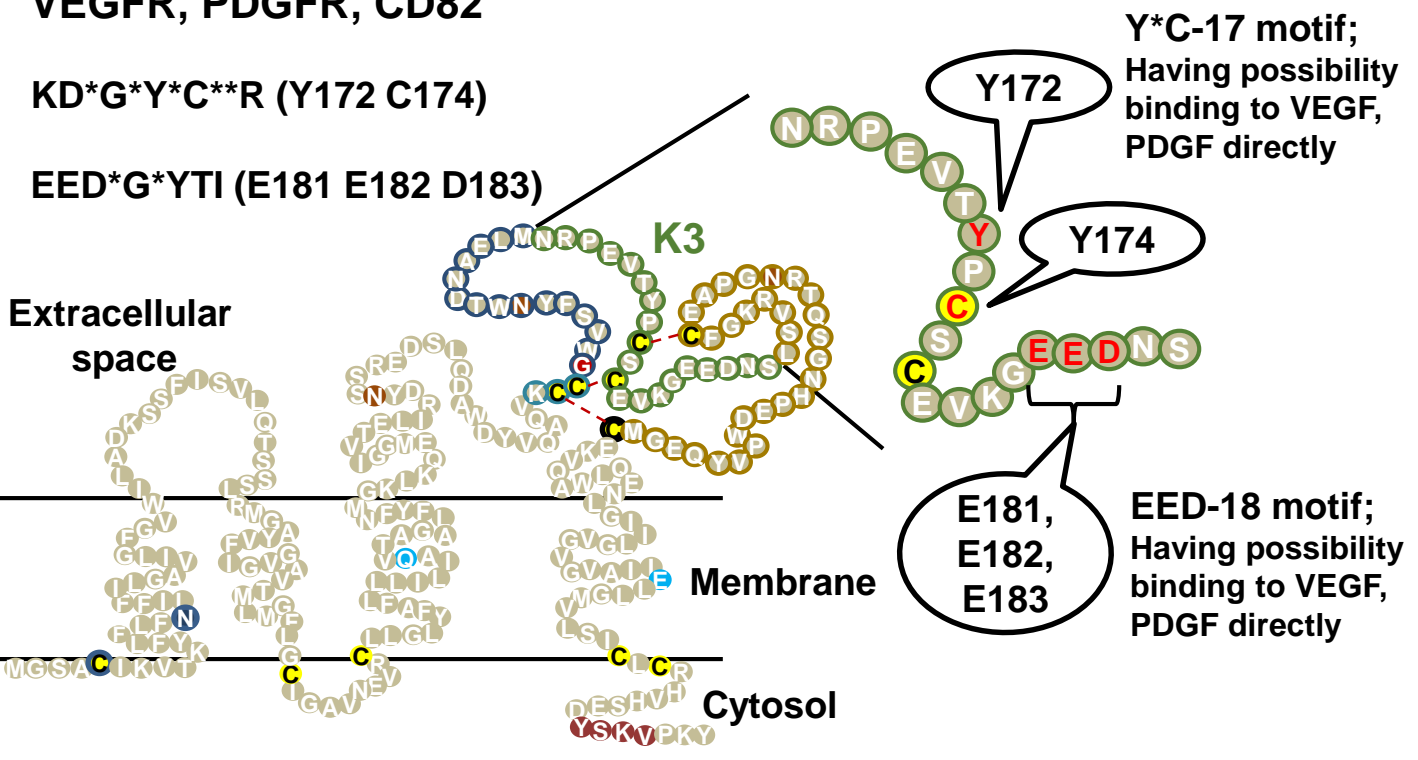
B

Consensus motif among VEGFR, PDGFR, CD82

KD\*G\*Y\*C\*\*R (Y172 C174)

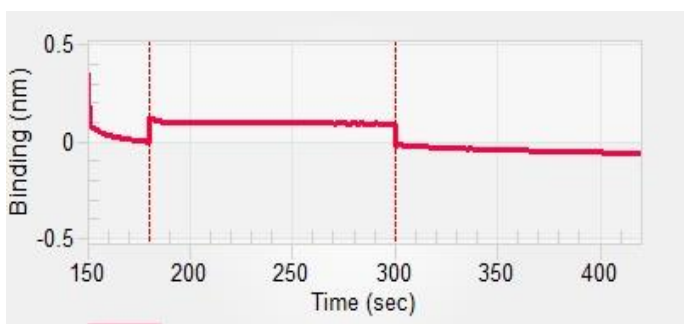
EED\*G\*YTI (E181 E182 D183)

KAI1 peptide and characteristics

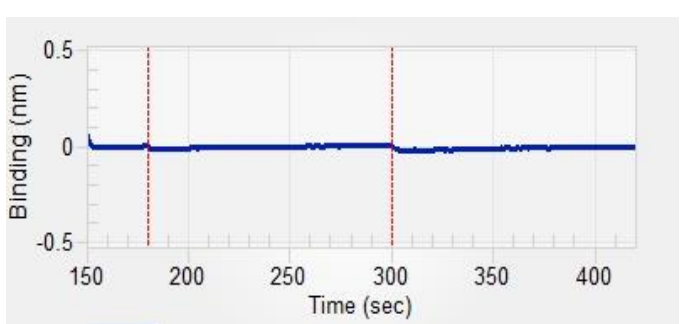


# Supplemental Figure 10

## KAI1 mutant peptide – VEGF binding test

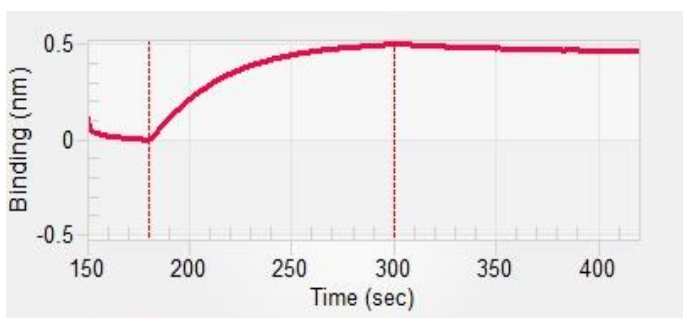


**KAI1 WT peptide – VEGF**

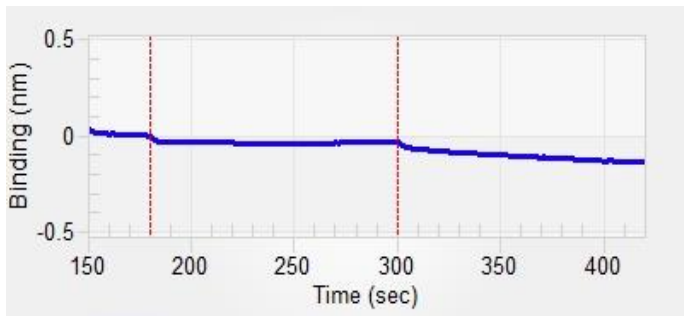


**KAI1 mutant peptide - VEGF**

## KAI1 mutant peptide – PDGF binding test



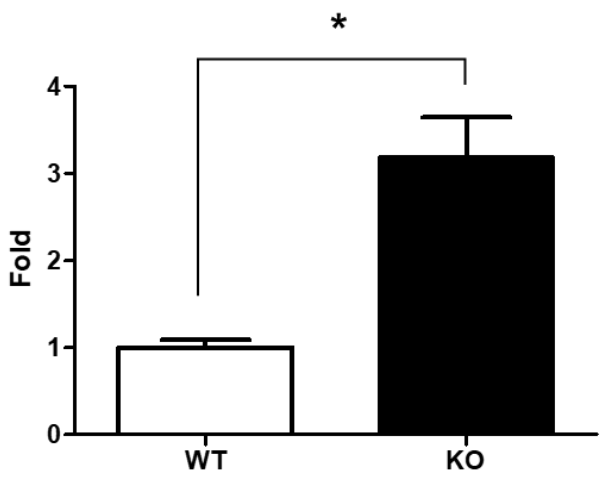
**KAI1 WT peptide – PDGF**



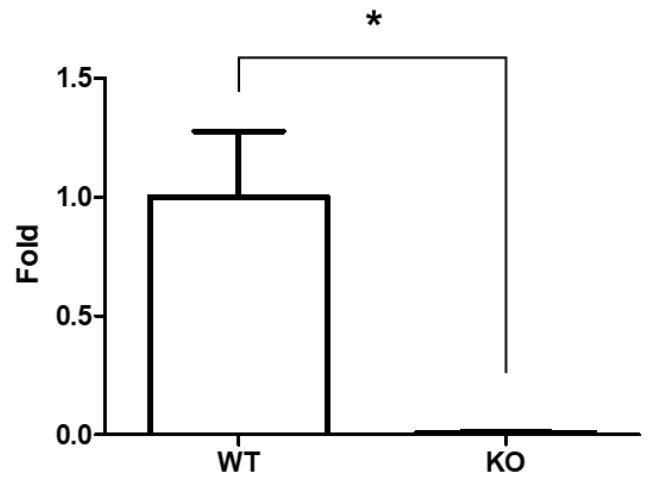
**KAI1 mutant peptide - PDGF**

# Supplemental Figure 11

**miR-181a**  
(inducing angiogenesis)



**miR-107**  
(suppressing angiogenesis)



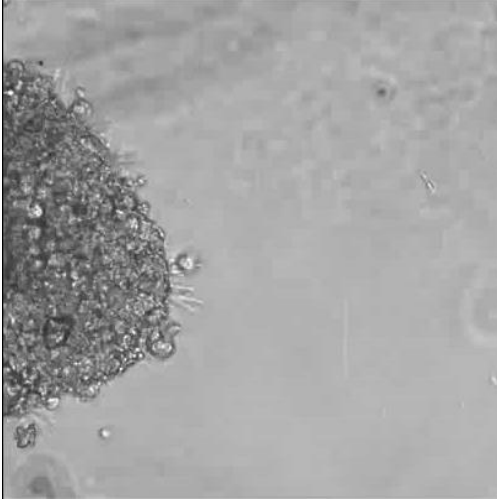
- primary WT mouse derived exosome
- primary kai1 KO mouse derived exosome

# Video 1

ECs +

---

Ad-Mock  
PCs



Ad-Kai1 O/E  
PCs

