

Supplementary Figure - S1

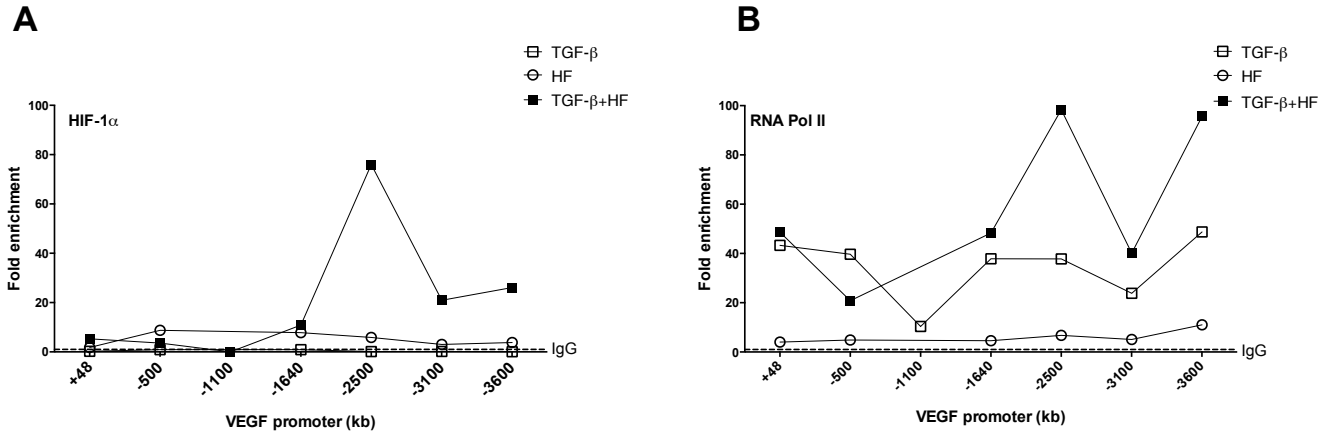


Figure S1 - ChIP assay using antibodies to RNA Polymerase II, Smad2/3, P-Smad2 and HIF-1 α . NB4 cells were treated with 200 ng/mL of HF for 6 hours, or treated with 200 ng/mL of HF for 6 hours and stimulated with TGF- β (1ng/mL) in the last hour, or only stimulated with TGF- β . Graphics showing a PCR amplification of ChIP products for (A) HIF-1 α and (B) RNA Polymerase II antibodies using a series of primer pairs covering the *Vegf* promoter. Data is represented as fold enrichment to IgG control antibody.