

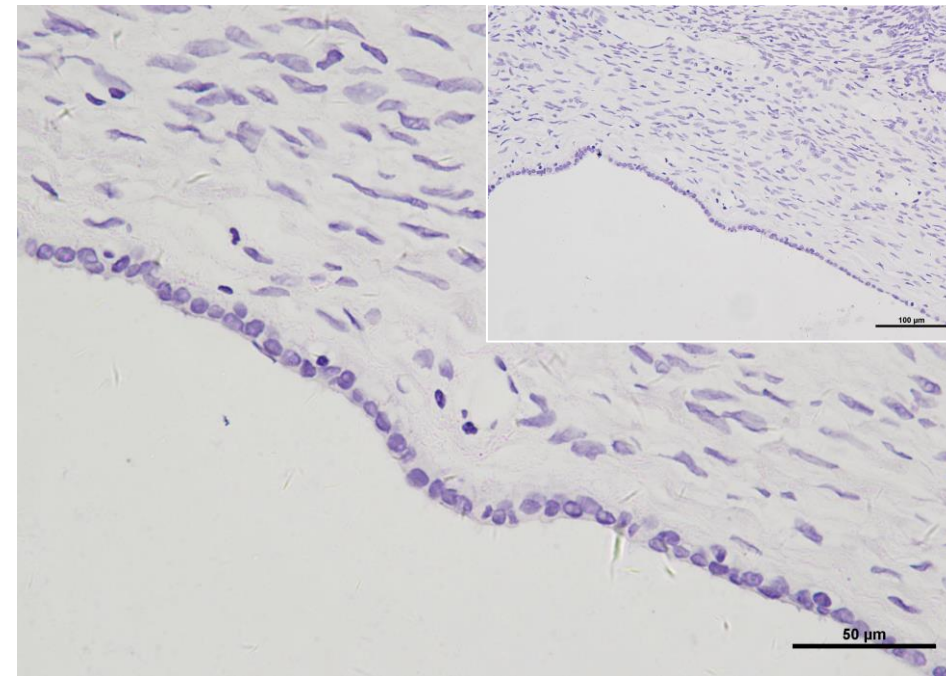
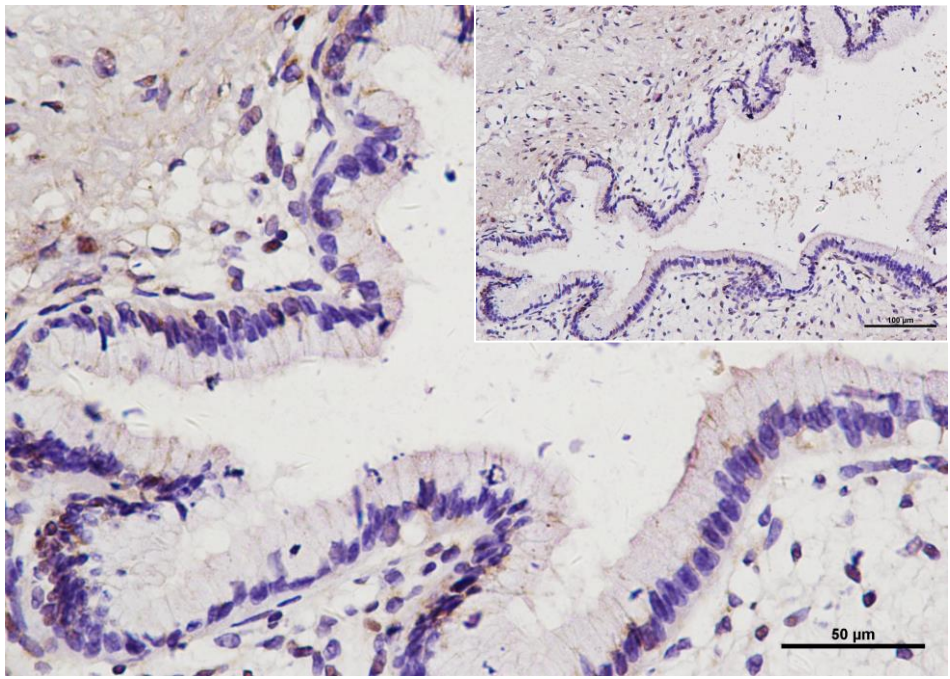
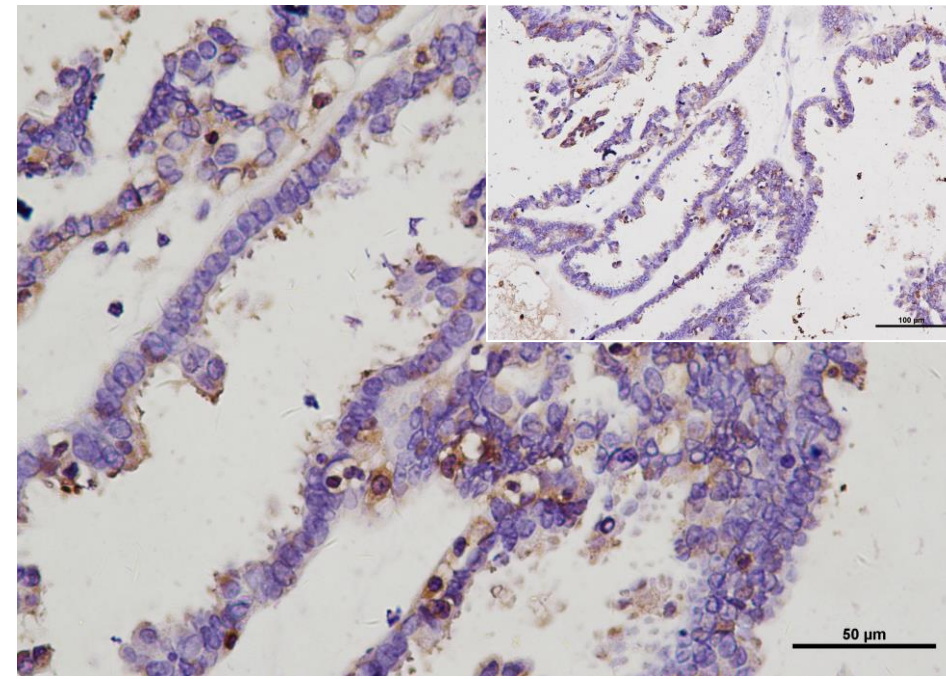
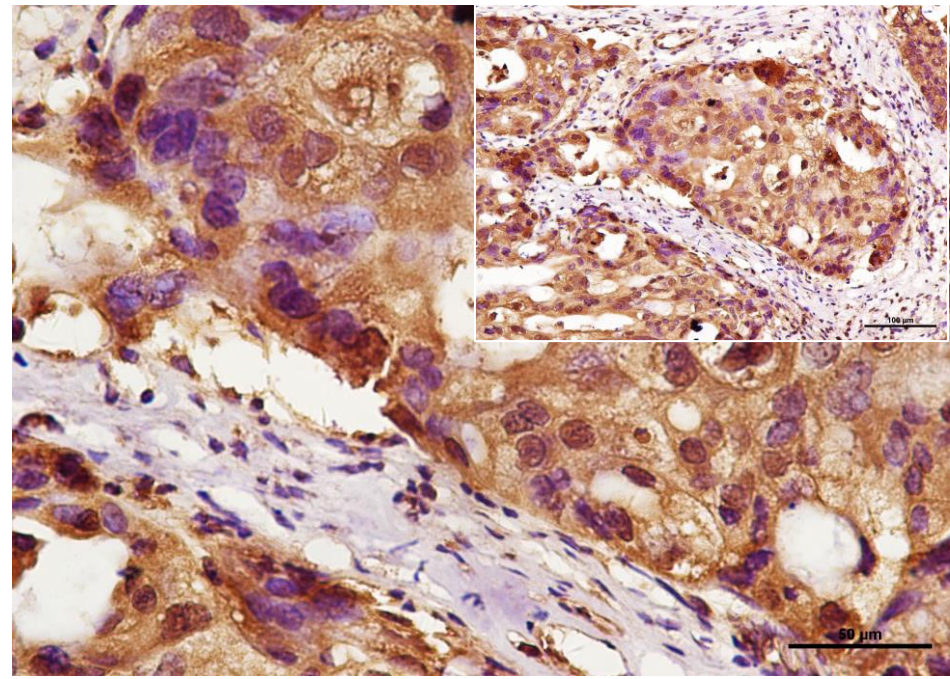
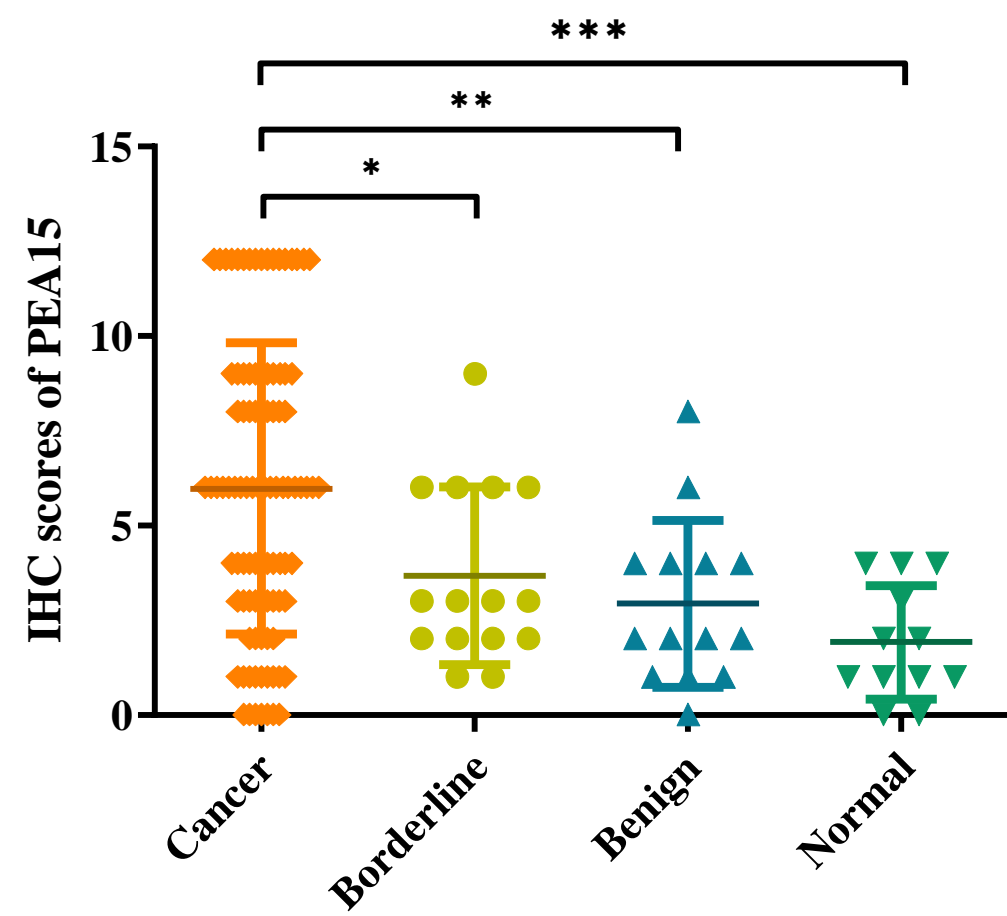
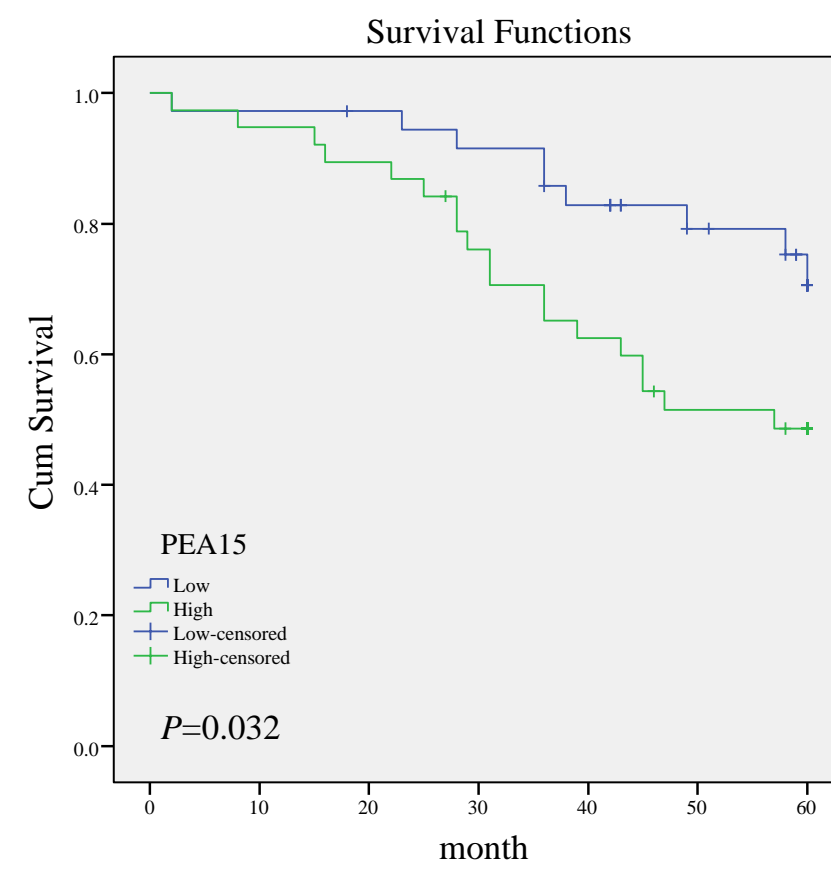
a**b****c**

Table S2 Expression of PEA15 in different types of ovarian tissue

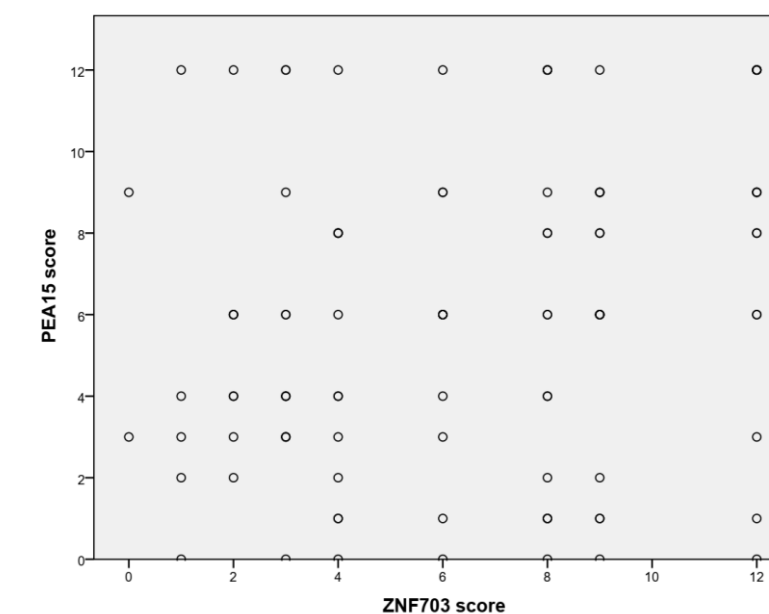
Group	Cases	Low		High		Positive rate(%)	High Positive rate(%)
		-	+	++	+++		
Malignant	98	21	20	29	28	78.6 ^{a,b}	58.2 ^{c,d}
Borderline	15	6	4	4	1	60 ^{e,f}	33.3 ^{g,h}
Benign	14	8	4	2	0	42.9	14.3
Normal	12	8	4	0	0	33.3	0

Note: a, malignant vs. benign (**, $P=0.008$); b, malignant vs. normal (***, $P=0.002$); c, malignant vs. benign (***, $P=0.002$); d, malignant vs. normal (***, $P < 0.001$); e, borderline vs. benign ($P = 0.356$); f, borderline vs. normal ($P = 0.168$); g, borderline vs. benign ($P = 0.390$); h, borderline vs. normal (*, $P = 0.047$).

Table S3 The correlation between ZNF703 and PEA15 expression in ovarian cancer (n=98)

ZNF703	PEA15				case
	-	+	++	+++	
-	3	6	3	3	15
+	5	9	6	4	24
++	7	4	9	8	28
+++	6	1	11	13	31
case	21	20	29	28	98

d

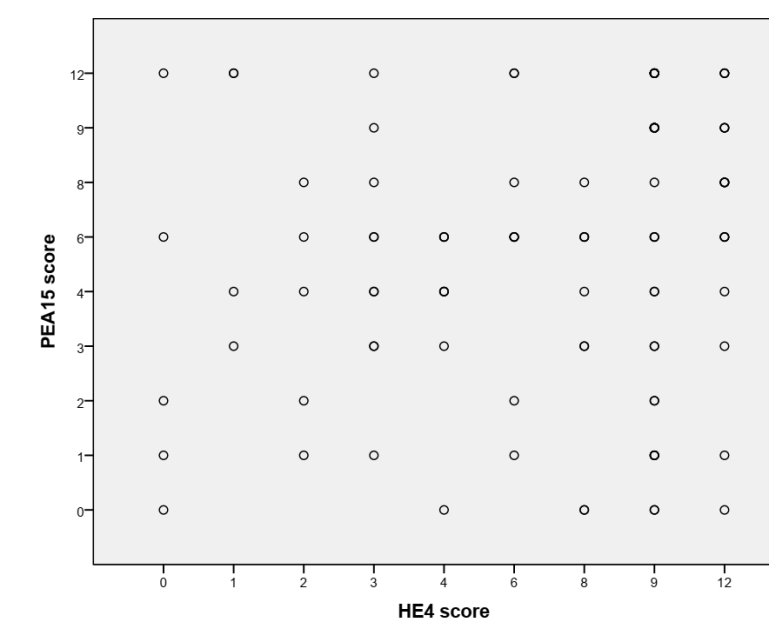


Spearman correlation coefficient $R_s=0.237$, $P=0.019$

Table S4 The correlation between HE4 and PEA15 expression in ovarian cancer (n=98)

HE4	PEA15				case
	-	+	++	+++	
-	5	3	3	3	14
+	2	8	6	2	18
++	4	3	9	2	18
+++	10	6	11	21	48
case	21	20	29	28	98

e



Spearman correlation coefficient $R_s=0.203$, $P=0.045$