

Additional file 4

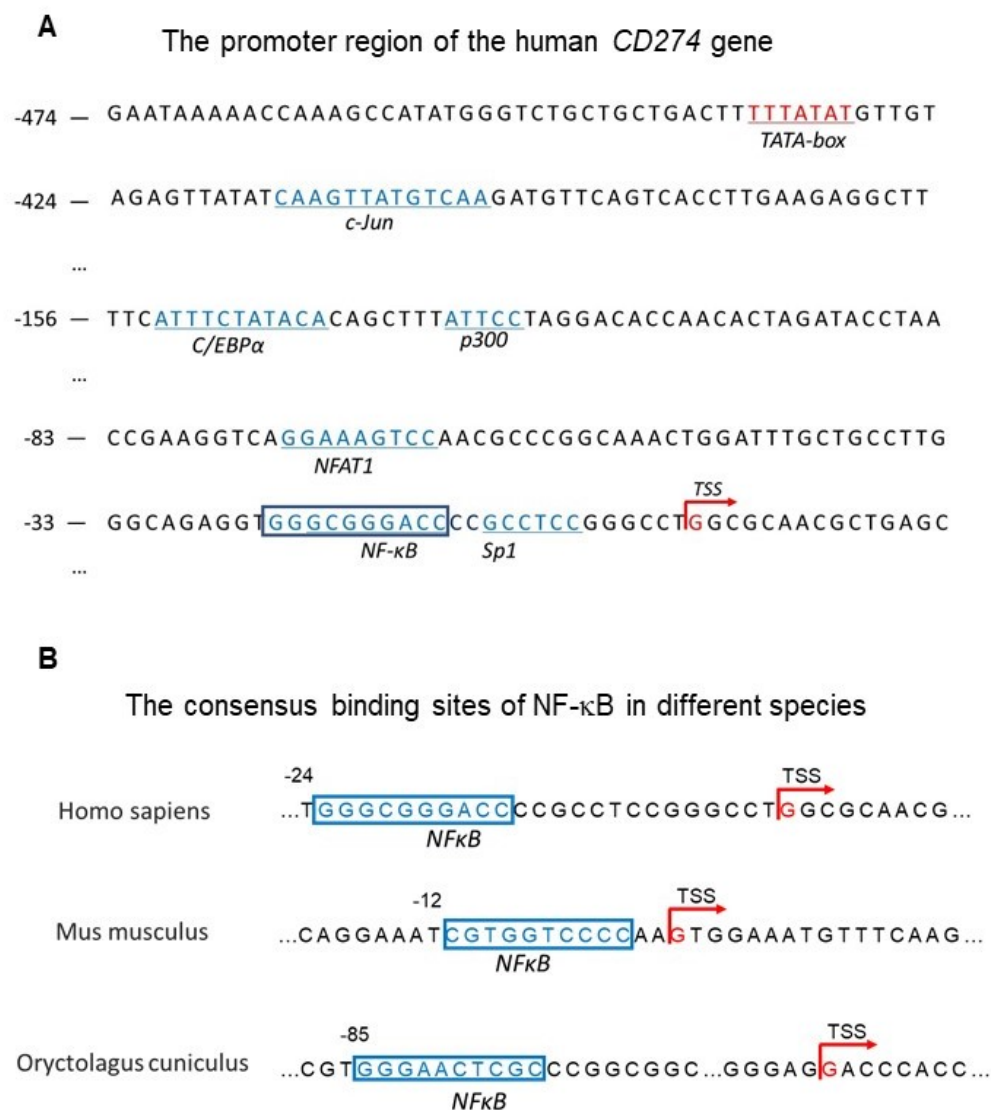


Fig. S4. Identification of the proximal NF- κ B element in the *CD274* genes. **a** The sequence of the promoter region of the human *CD274* gene, **b** The conserved proximal NF- κ B element in the *CD274* genes exists in different mammalian species. Transcription factors binding sites are boxed and the transcriptional start site (TSS) is indicated by red arrows.