

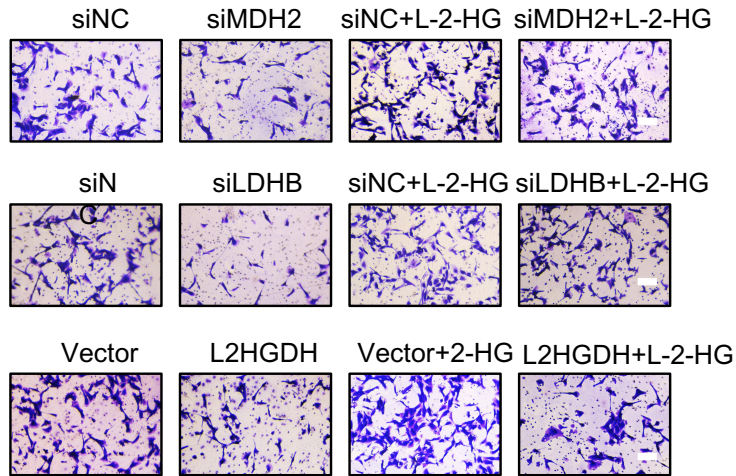
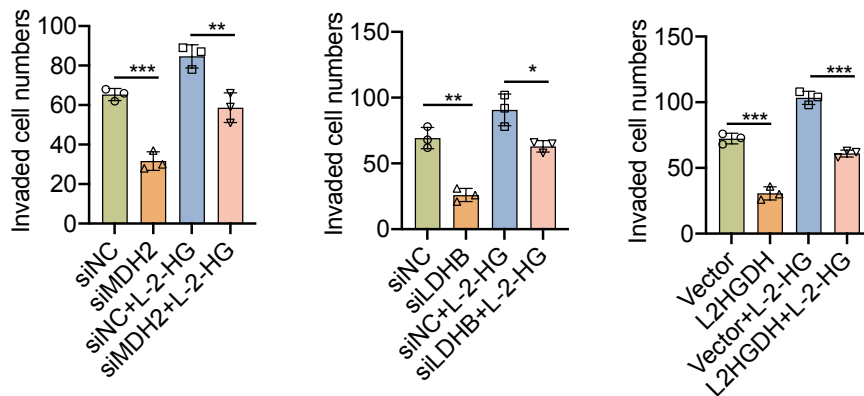
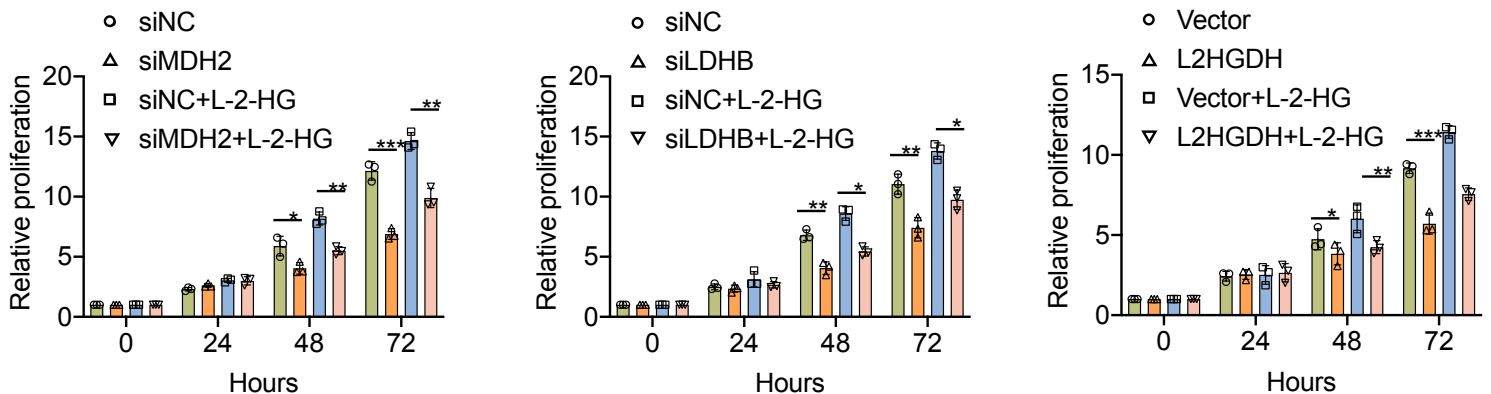
A**B****C**

Figure S7. L-2-HG promotes while L-2HGDH over-expression or MDH2 and LDHB depletion inhibit the proliferation and invasion of ccRCC-derived cells. (A) 786-O cells were transfected with MDH2 siRNA(top), LDHB siRNA (Middle) and L2HGDH expression vector (Bottom), respectively, with and without L-2-HG. Invasion was then assessed 48 hours post-transfection using matrigel-coated invasion assays (B). (C) 786-O cells treated above were analyzed for their proliferation using IncuCyte S3 Live-Cell Analysis System. Scale bars: 100 μ m. *, ** and *** denote $P < 0.05$, 0.01 and 0.001, respectively. Three independent experiments were performed.