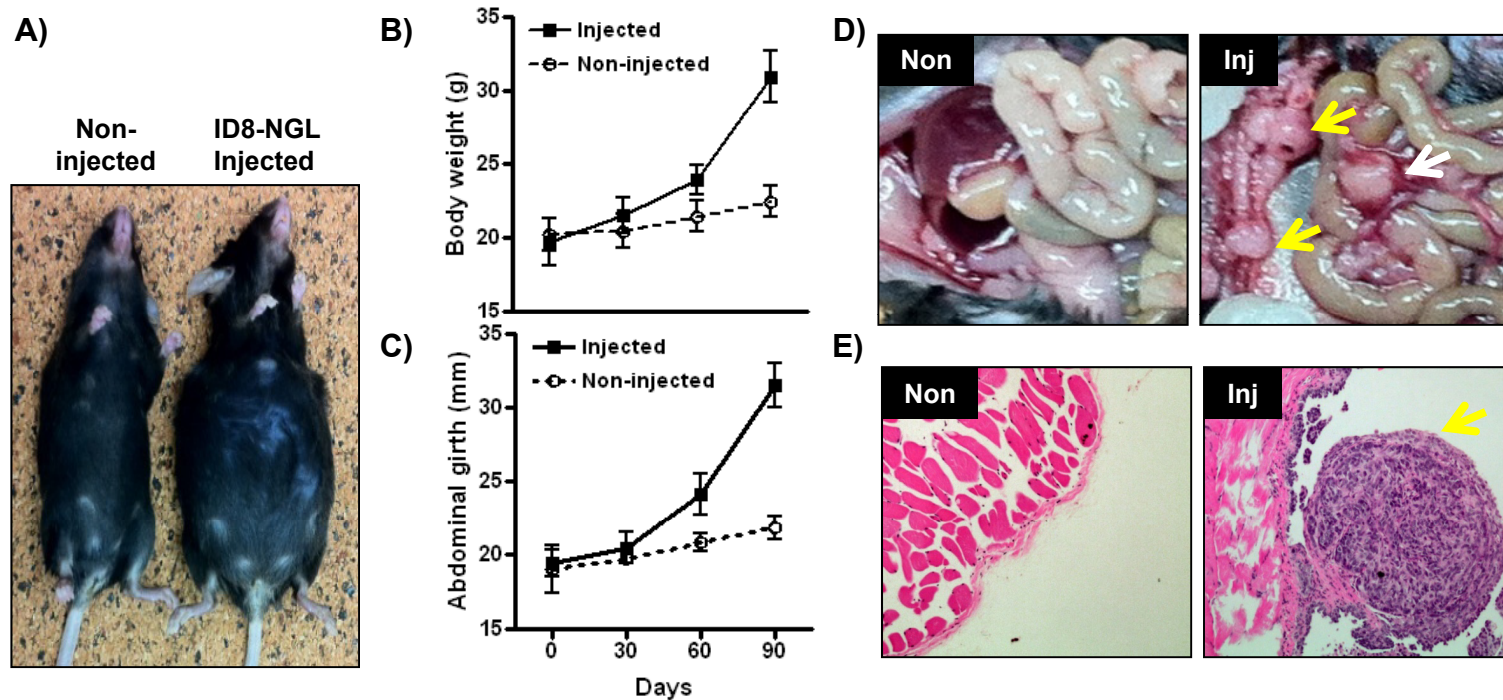


## Wilson et al: Supplementary Figure 1



**Peritoneal dissemination of ID8-NGL cells during tumor progression.** (A) Mice injected with ID8-NGL cells show distended abdomen indicative of ascites formation at 90d after injection compared to PBS-injected mice (non-inject). Changes in (B) body weight and (C) abdominal girth were measured. Values are mean+SD for 5 mice per group. (D) Mice injected with ID8-NGL cells display abdominal dissemination of tumor cells. The main sites of tumor implantation are the peritoneal wall (yellow arrows) and in the mesentery (white arrow). (E) H&E staining example of tumor implantation in the peritoneal wall.