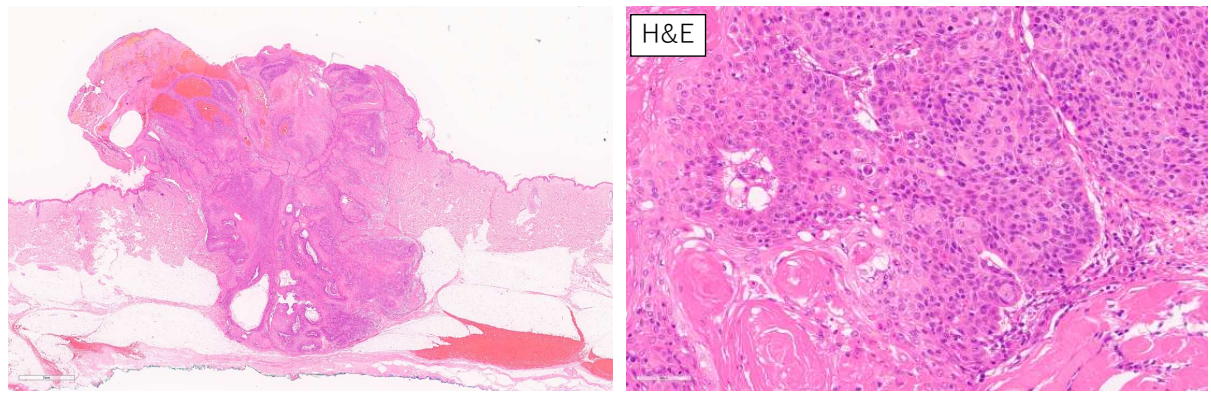
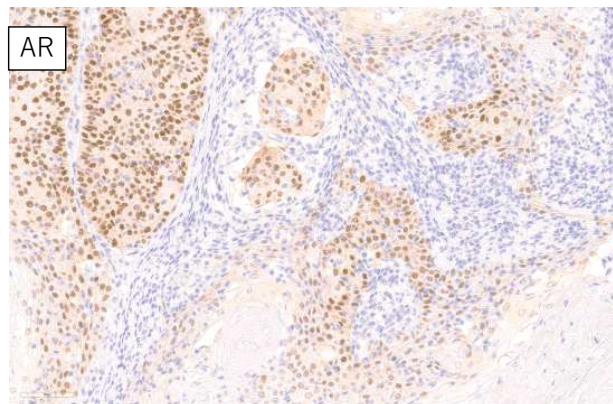


Supplementary Figure

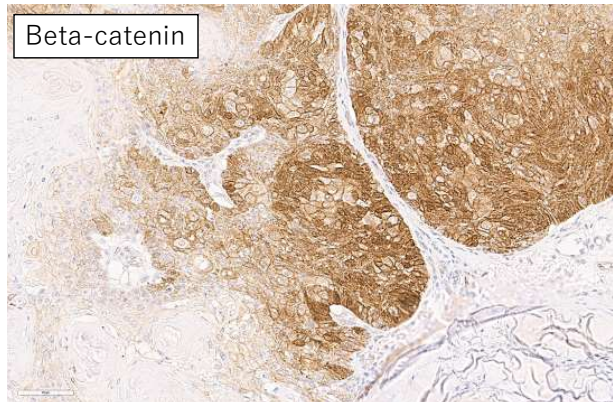
(A)



(B)



(C)



Supplementary Figure. Representative histology of the cutaneous tumor.

(A) Hematoxylin eosin staining of the cutaneous tumor. (B) IHC of androgen receptor (AR). AR is diffuse positive. (C) IHC of β -catenin. β -catenin is focally positive in the nuclei.