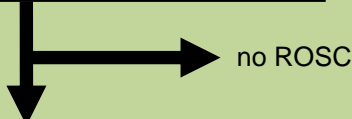


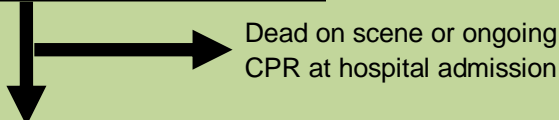
n = 368

Traumatic Pre-Hospital Cardiac Arrest  
**100 %**



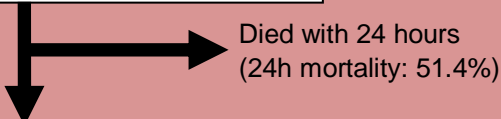
n = 107

Return of spontaneous circulation (ROSC)  
**29 %**



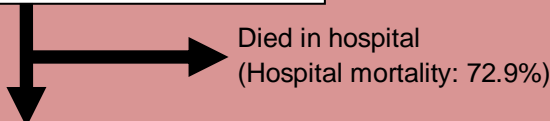
n = 95

Hospital admission after ROSC  
**26 %**



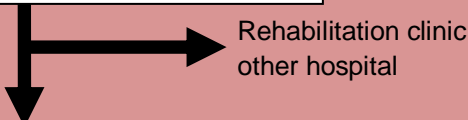
n = 814

24h Survival  
**13 %**



n = 396

Discharged alive  
**7 %**



n = 221

Discharged home  
**2 %**

n = 56