

Fig. 1 Forest plot of comparison PT vs. ST

Fig. 1 a) Outcome: Major intraprocedural bleeding

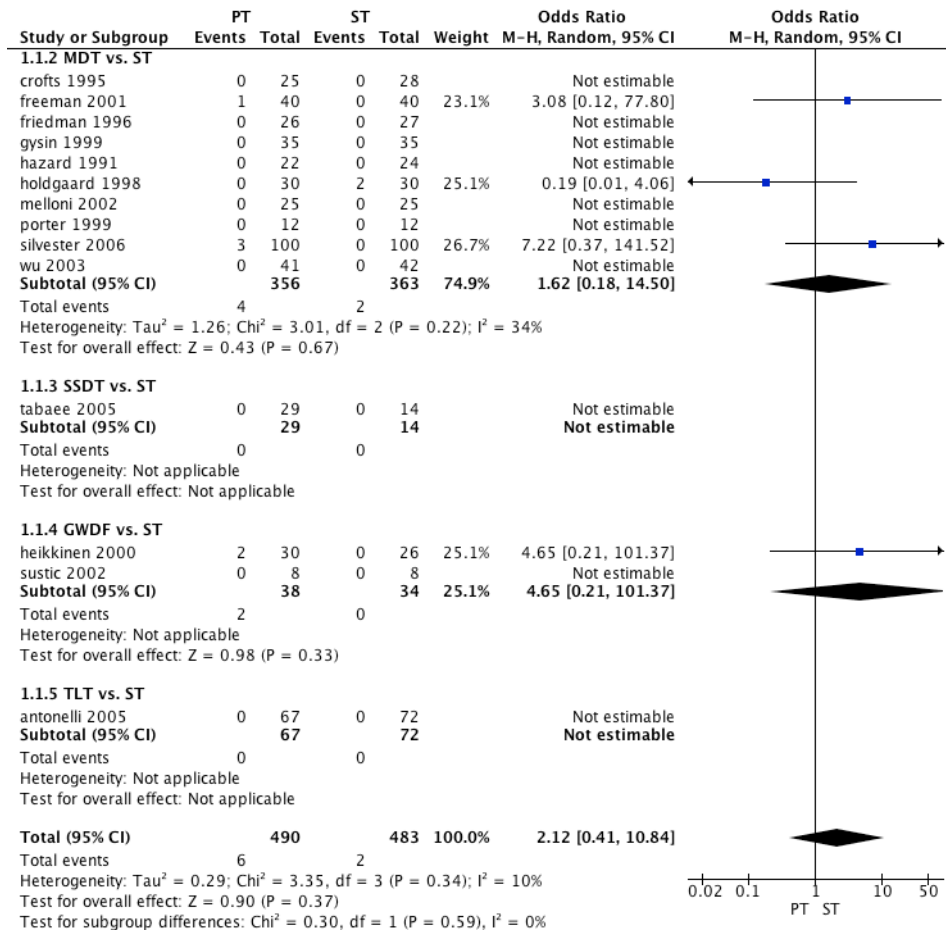


Fig. 1 b) Outcome: Tracheal stenosis

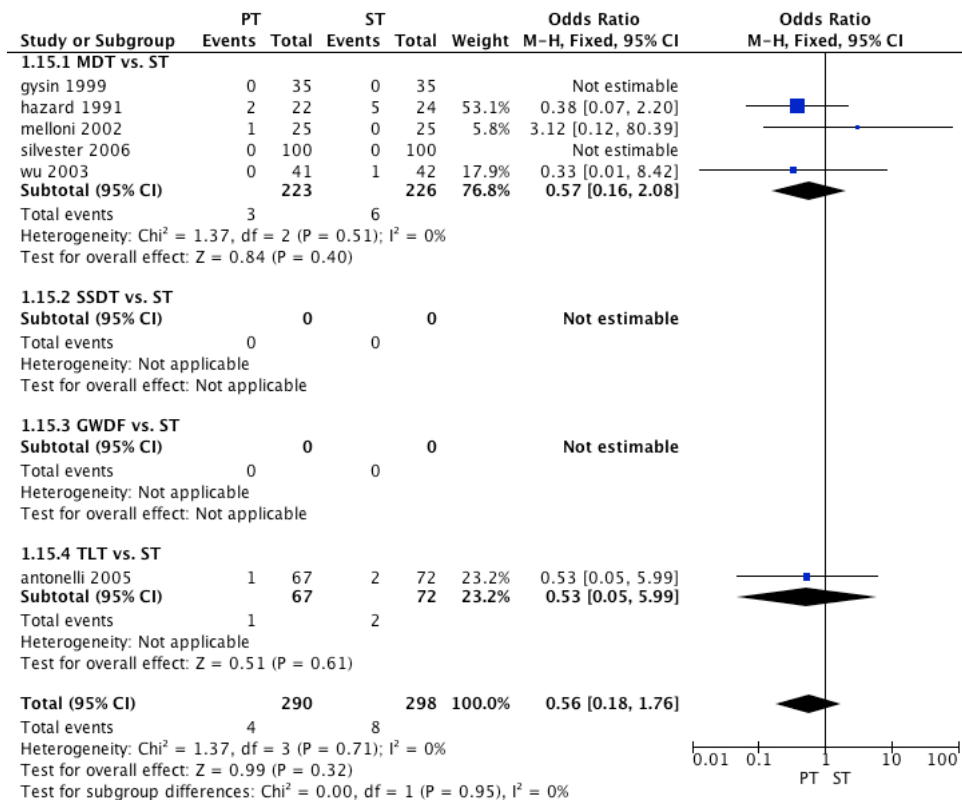


Fig. 1 c) Outcome: Hospital survival

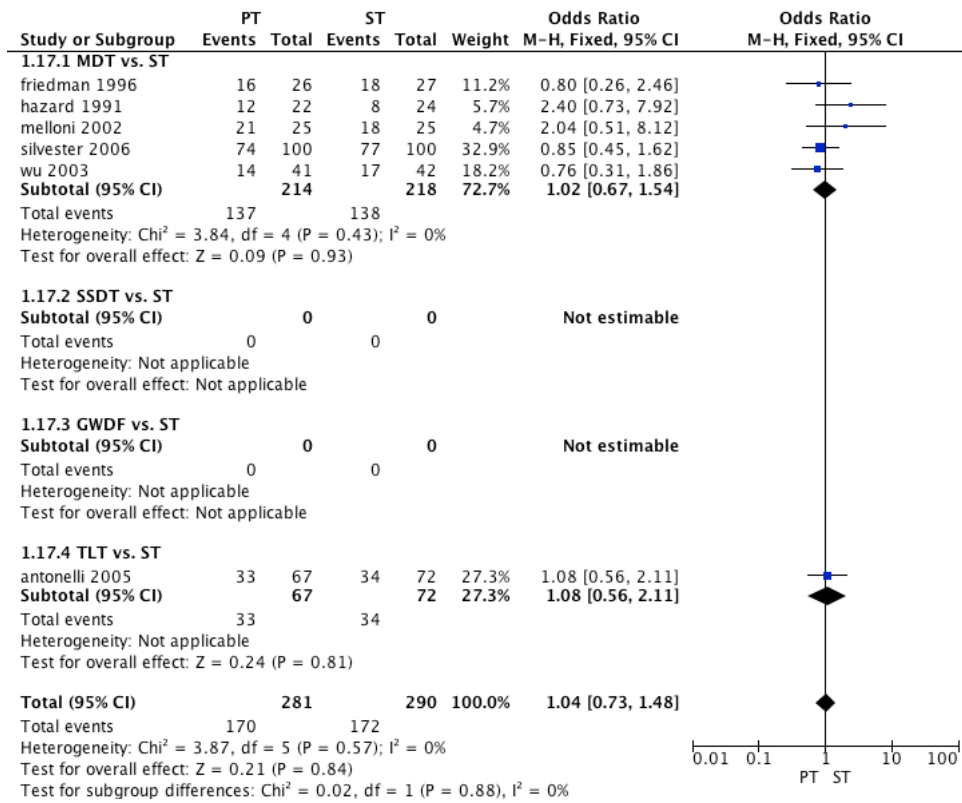


Fig. 1 d) Outcome: Duration of procedure

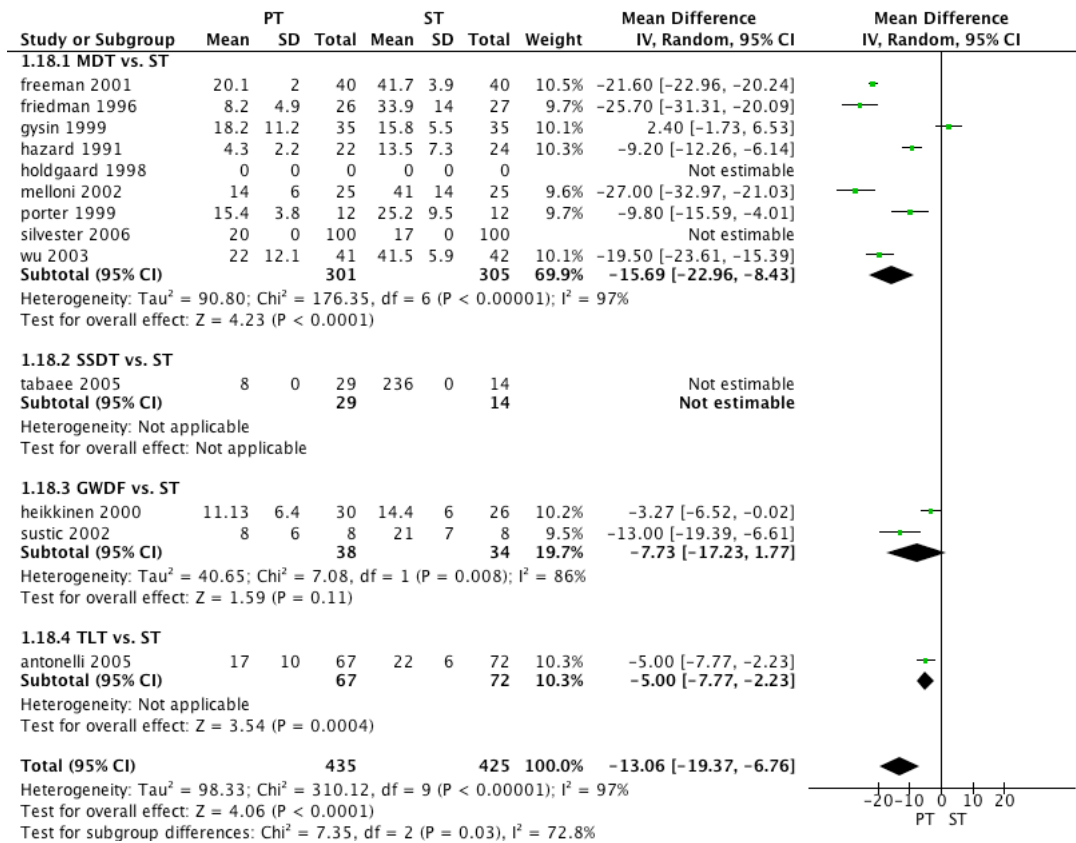


Fig 1 e) Outcome: Minor postprocedural bleeding

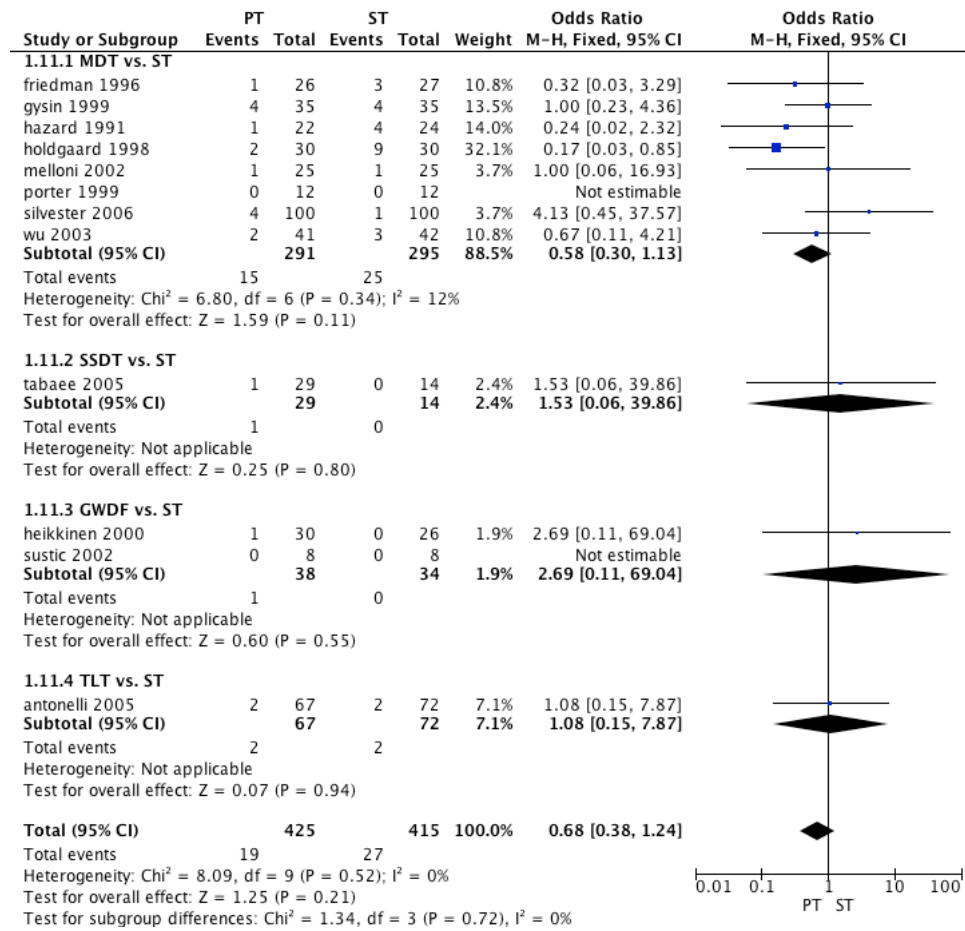


Fig. 1 f) Outcome: Minor intraprocedural bleeding

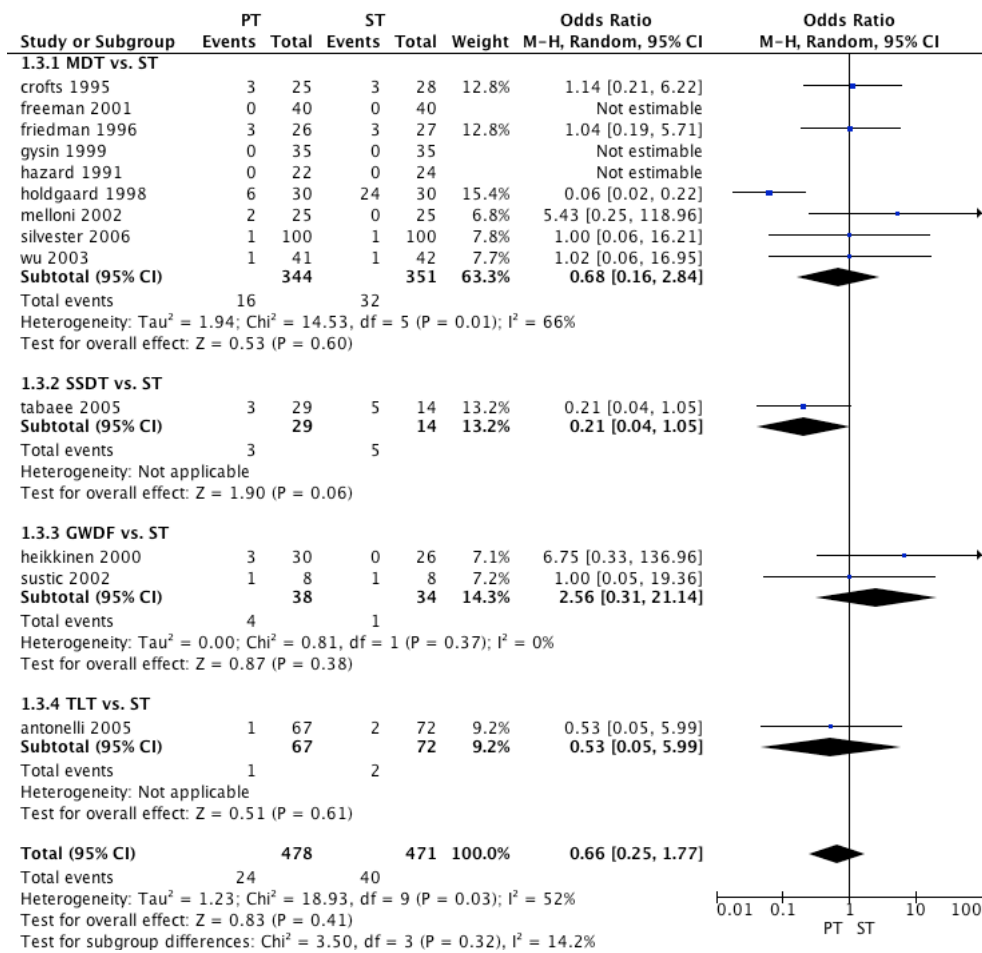


Fig. 1 g) Outcome: False route

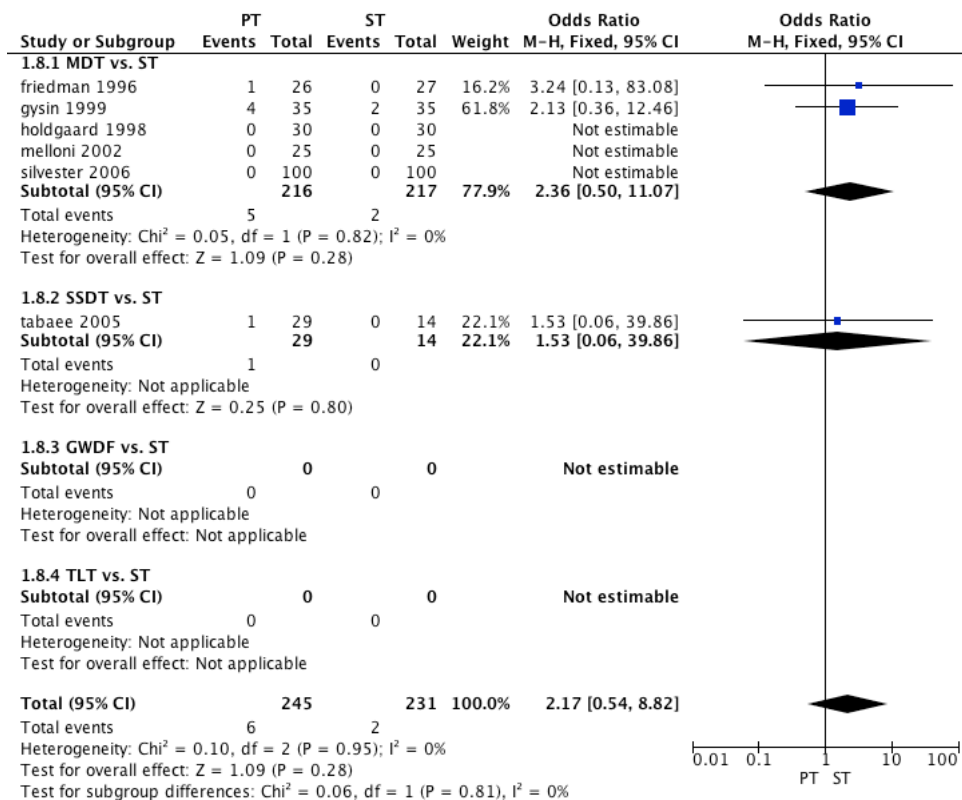


Fig. 1 h) Outcome: Subcutaneous emphysema

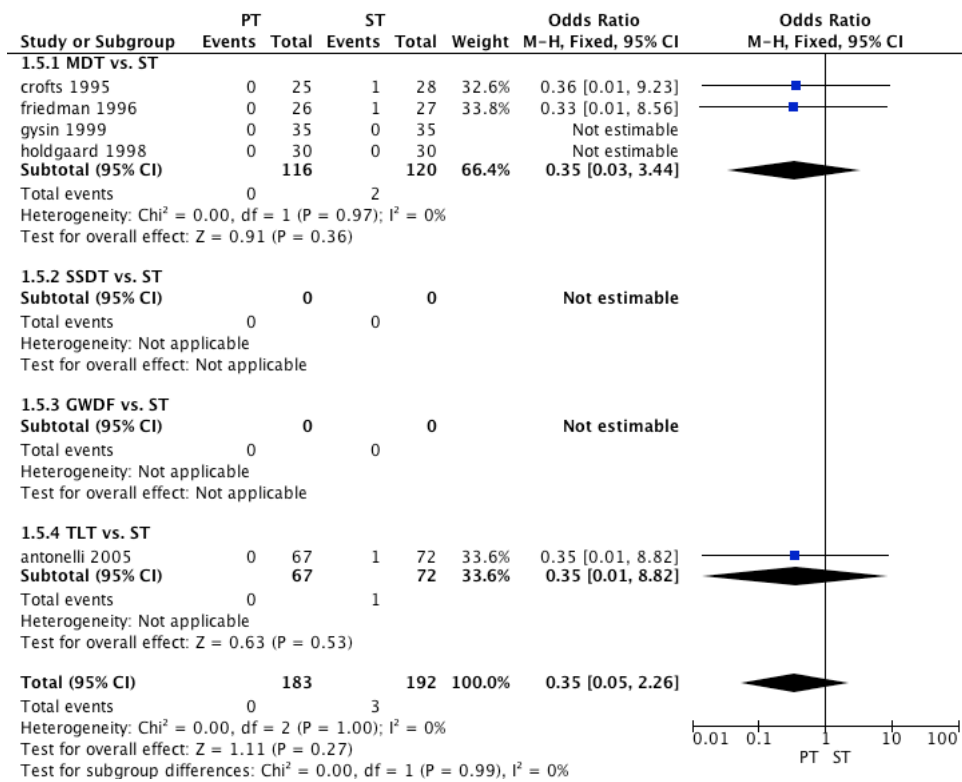


Fig. 1 i) Outcome: Pneumothorax

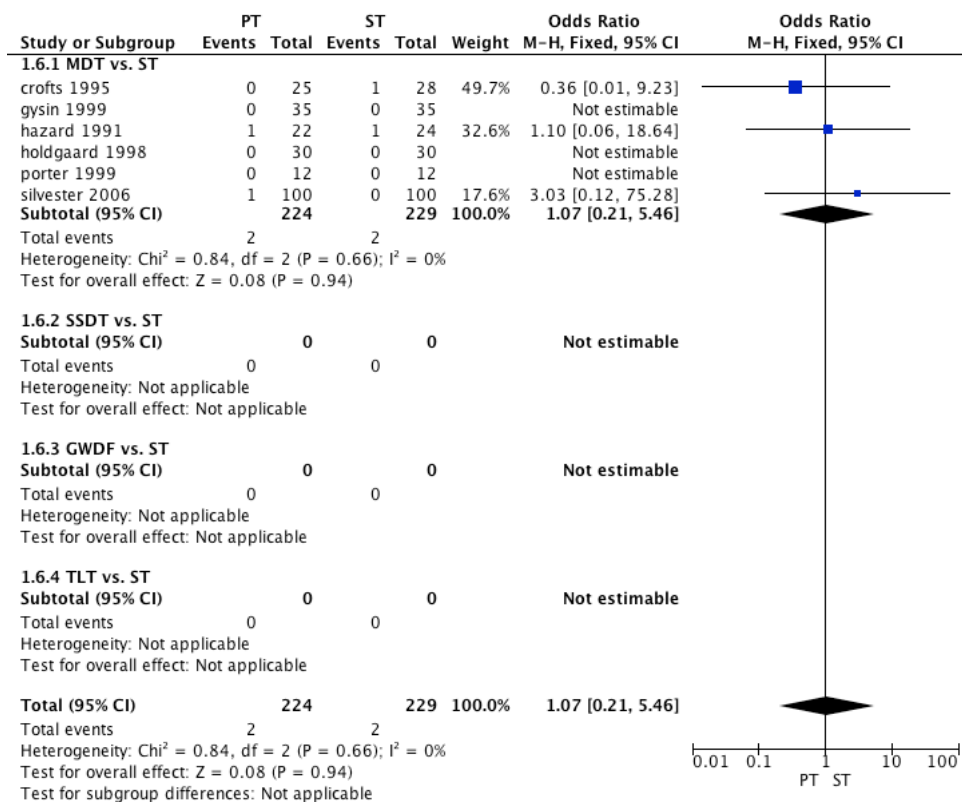


Fig. 1 j) Outcome: Desaturation

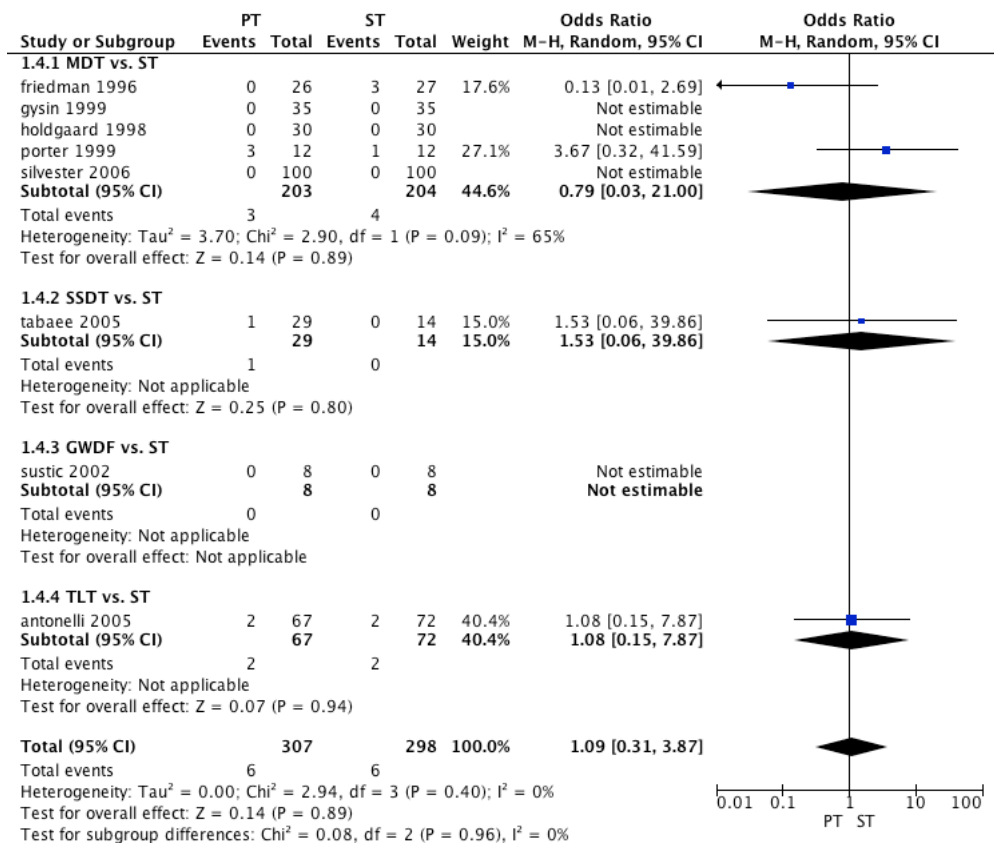


Fig. 2 Forest plot of comparison MDT/ SSdT vs. RDT/ BDT/ GWDF

Fig. 2 a) Outcome: Major intraprocedural bleeding

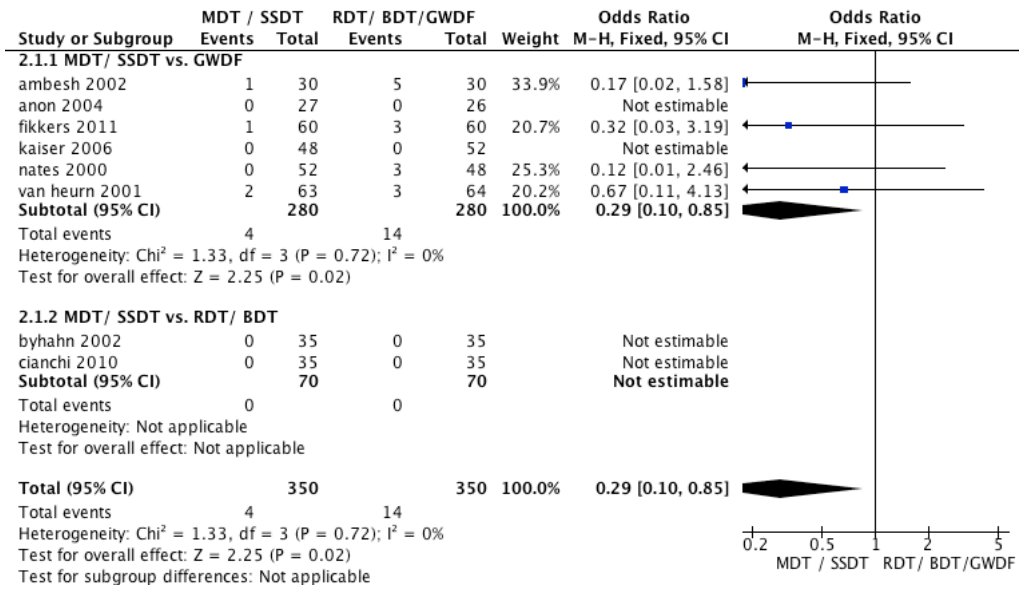


Fig. 2 b) Outcome: Tracheal stenosis

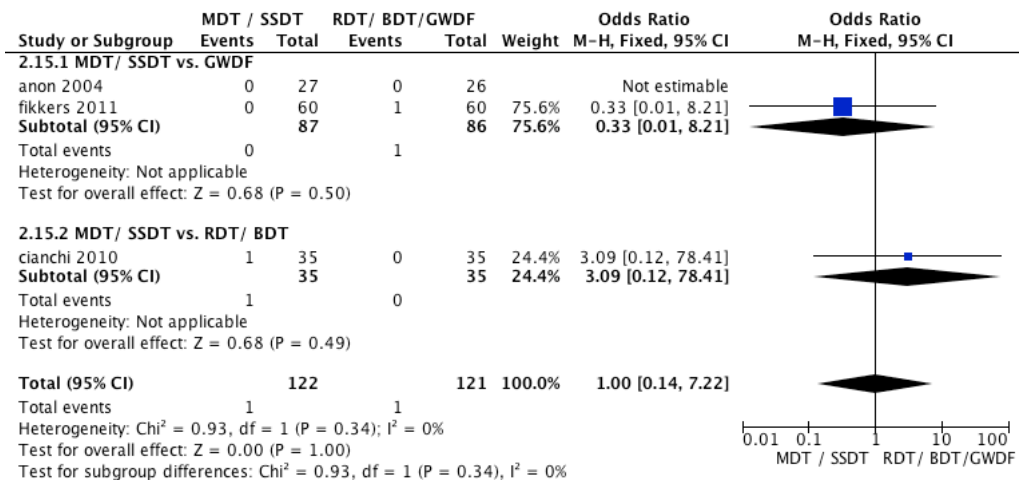


Fig. 2 c) Outcome: Hospital survival

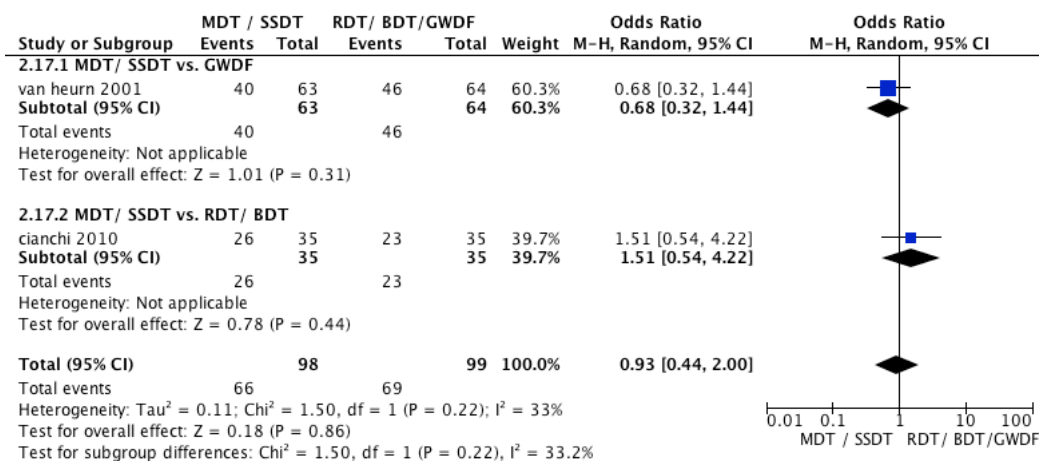


Fig. 2 d) Outcome: Duration of procedure

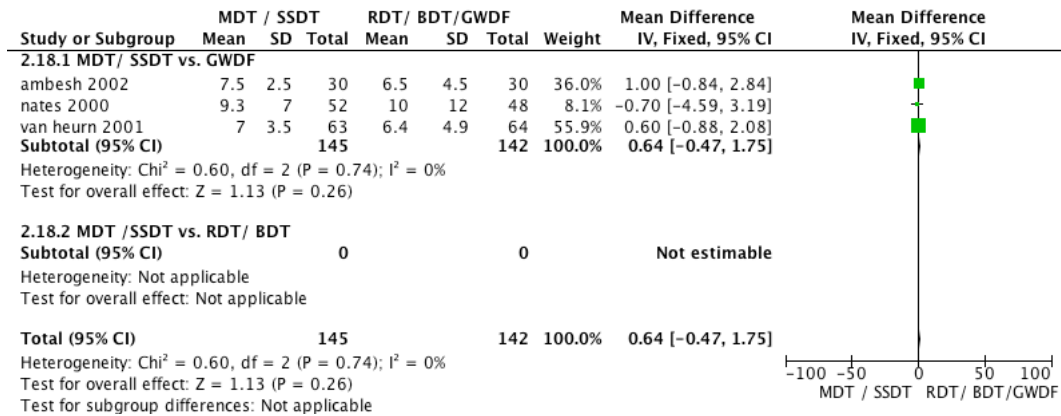


Fig 2 e) Outcome: Minor postprocedural bleeding

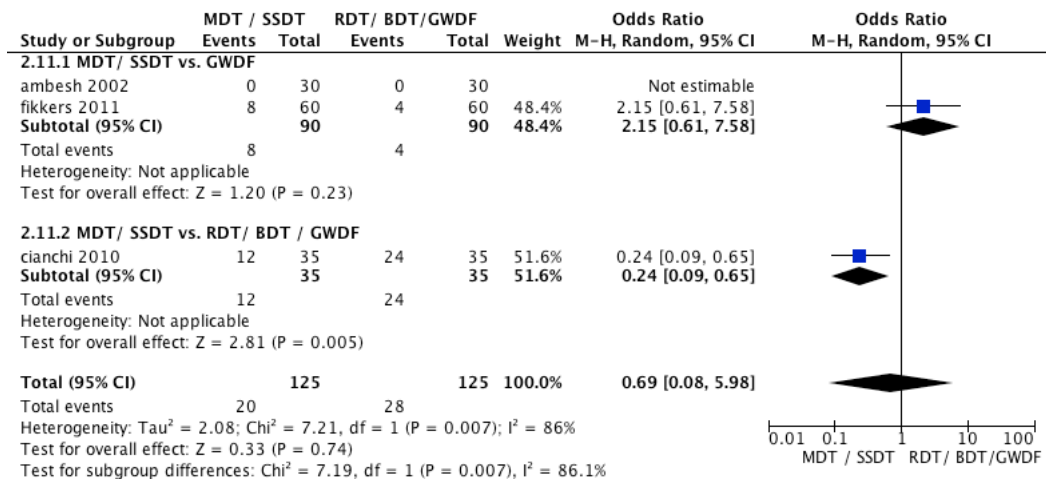


Fig. 2 f) Outcome: Minor intraprocedural bleeding

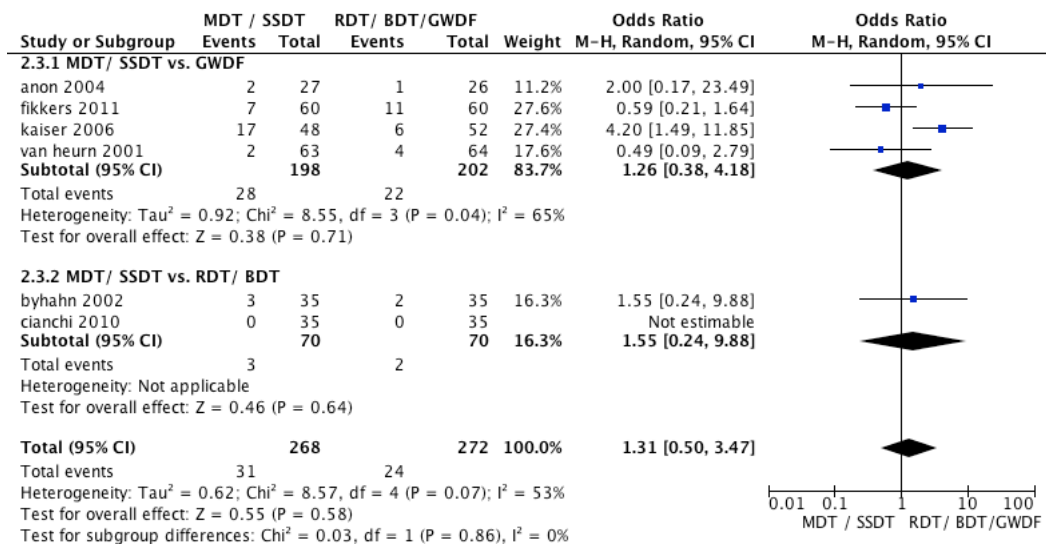


Fig. 2 g) Outcome: False route

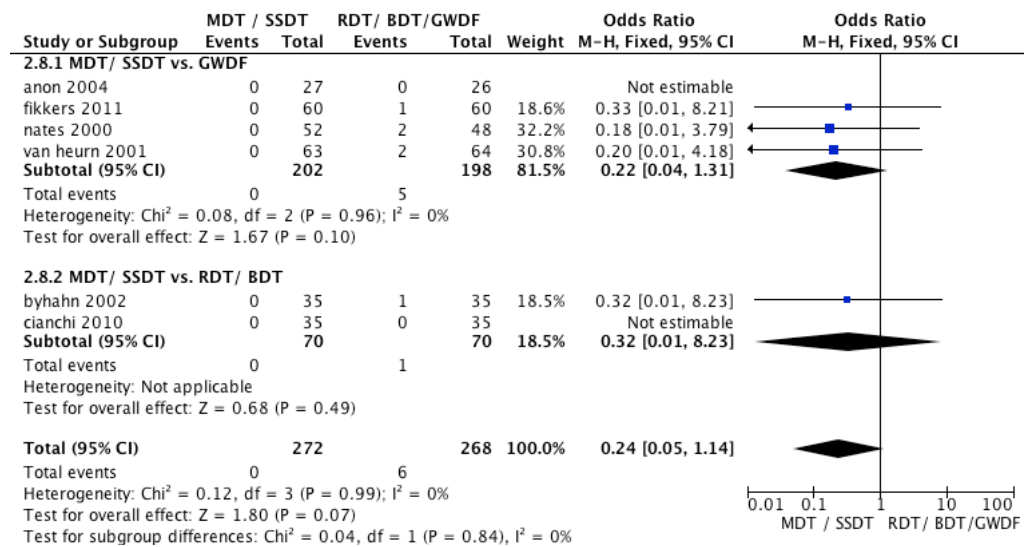


Fig. 2 h) Outcome: Subcutaneous emphysema

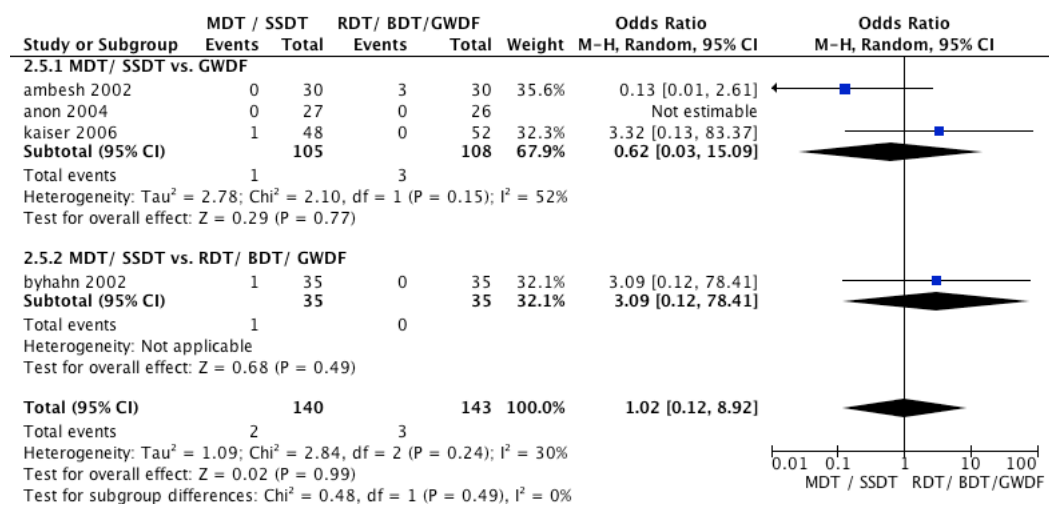


Fig. 2 i) Outcome: Pneumothorax

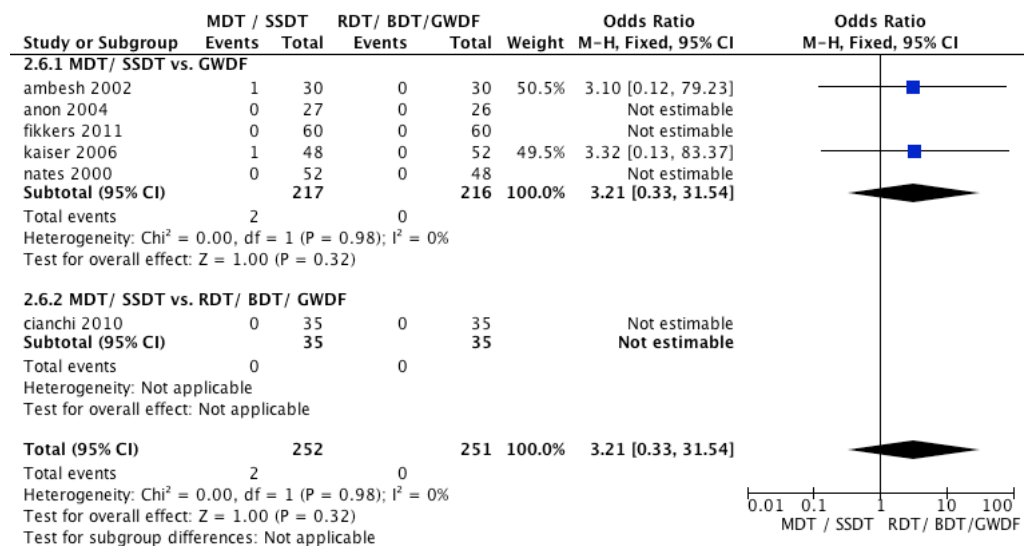


Fig. 2 j) Outcome: Desaturation

