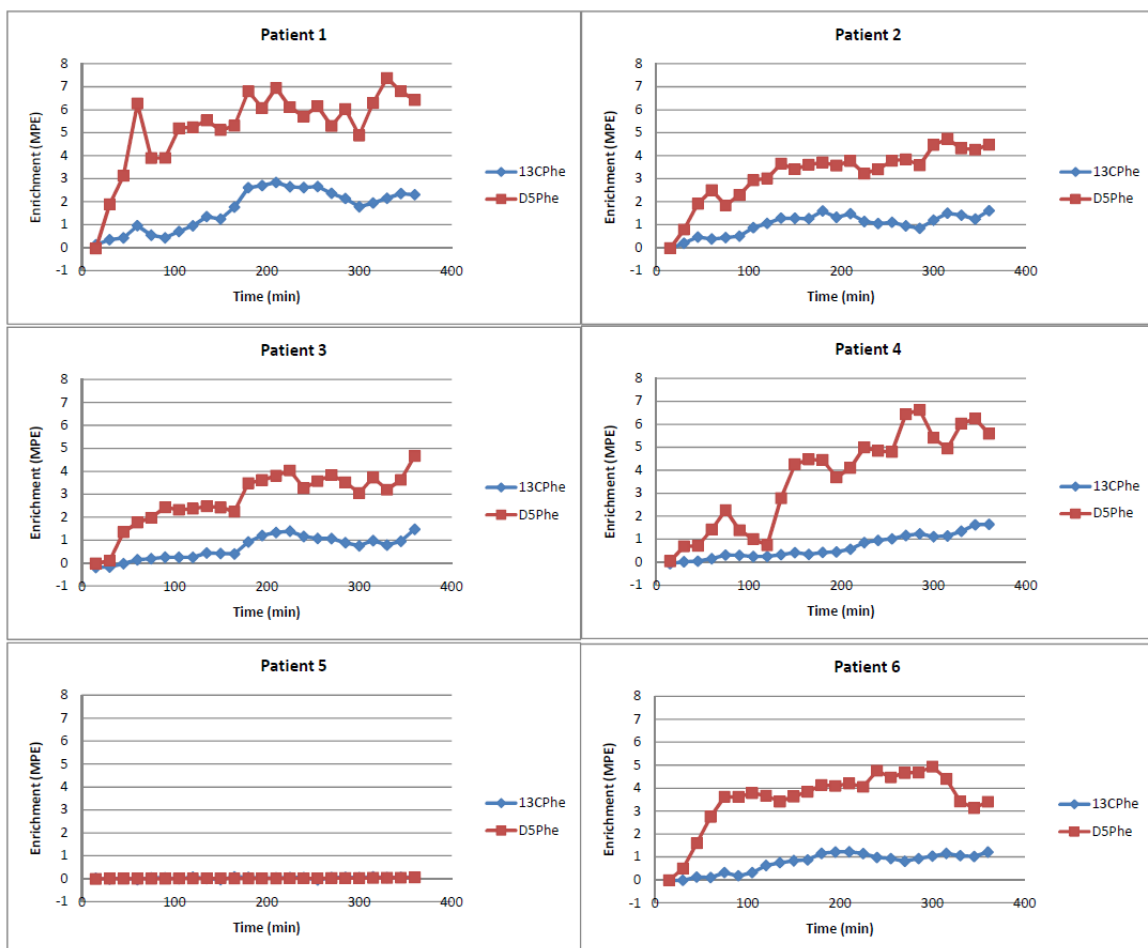


Supplementary file 1:

Plasma enrichment (A) and rate of appearance (B) measured with ^{13}C -phenylalanine intrinsically labeled casein protein (35.2 MPE) and with the same amount of free $^2\text{H}_5$ phenylalanine (99.7 MPE) given enterally together with maltodextrin in six critically ill patients for 6 hours (individual data). The rate of appearance is calculated from the two different tracers by dividing the enteral infusion rate by the plasma enrichment of each tracer at each time point. In one patient none of the tracers escaped the splanchnic tissues, so for this patient (patient 5) no rate of appearance could be calculated. After about 4 hours the rate of appearance was identical for both tracers.

A



B

