

(a) BSI

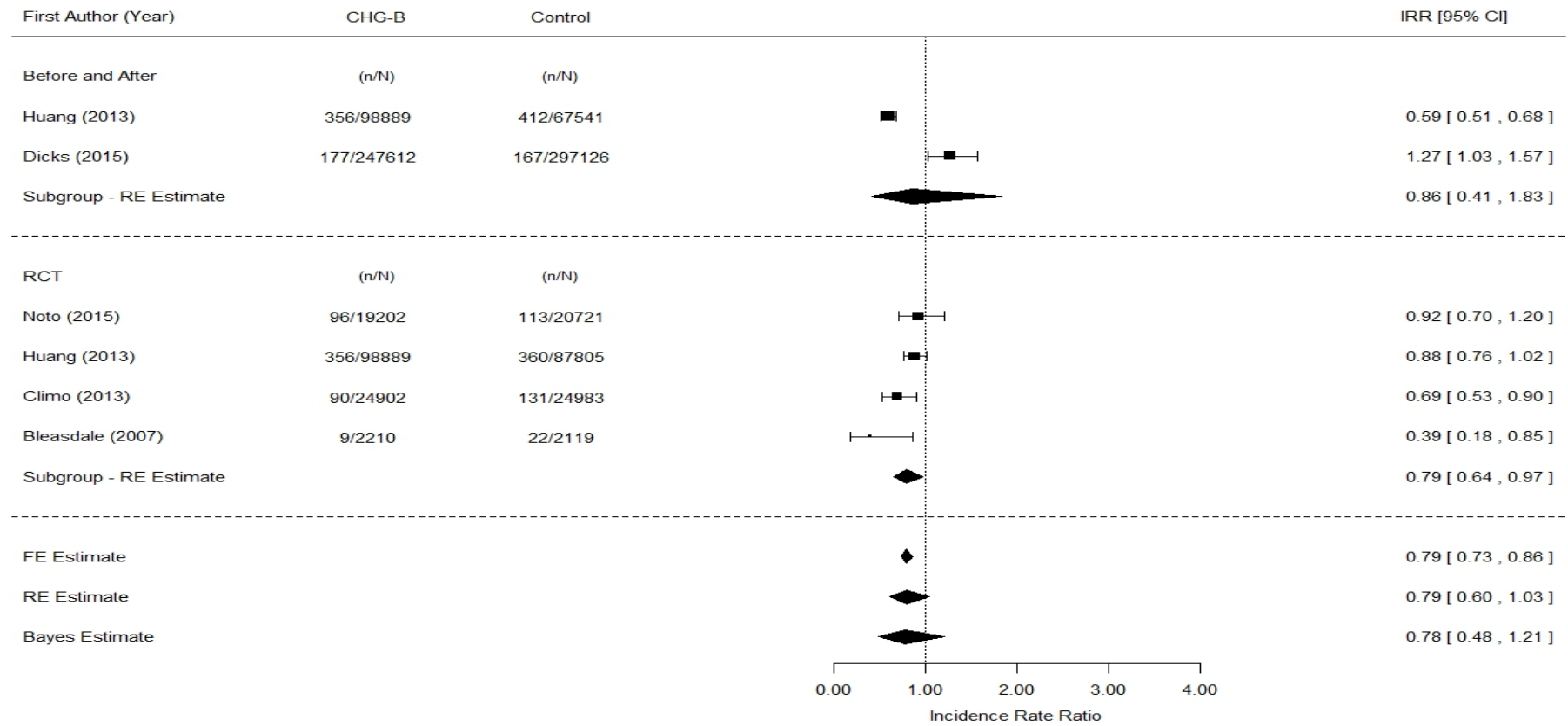


Figure 2. Forest plots presenting the effectiveness of CHG bathing in reducing: BSI (panel A), CLABSI (panel B), VAP (panel C), CAUTI (panel D), MRSA colonisation (panel E), MRSA associated BSI (panel F), VRE colonisation (panel G), VRE associated BSI (panel H), and Clostridium Difficile infections (panel I). FE = fixed effects, RE = random effects.

(b) CLABSI

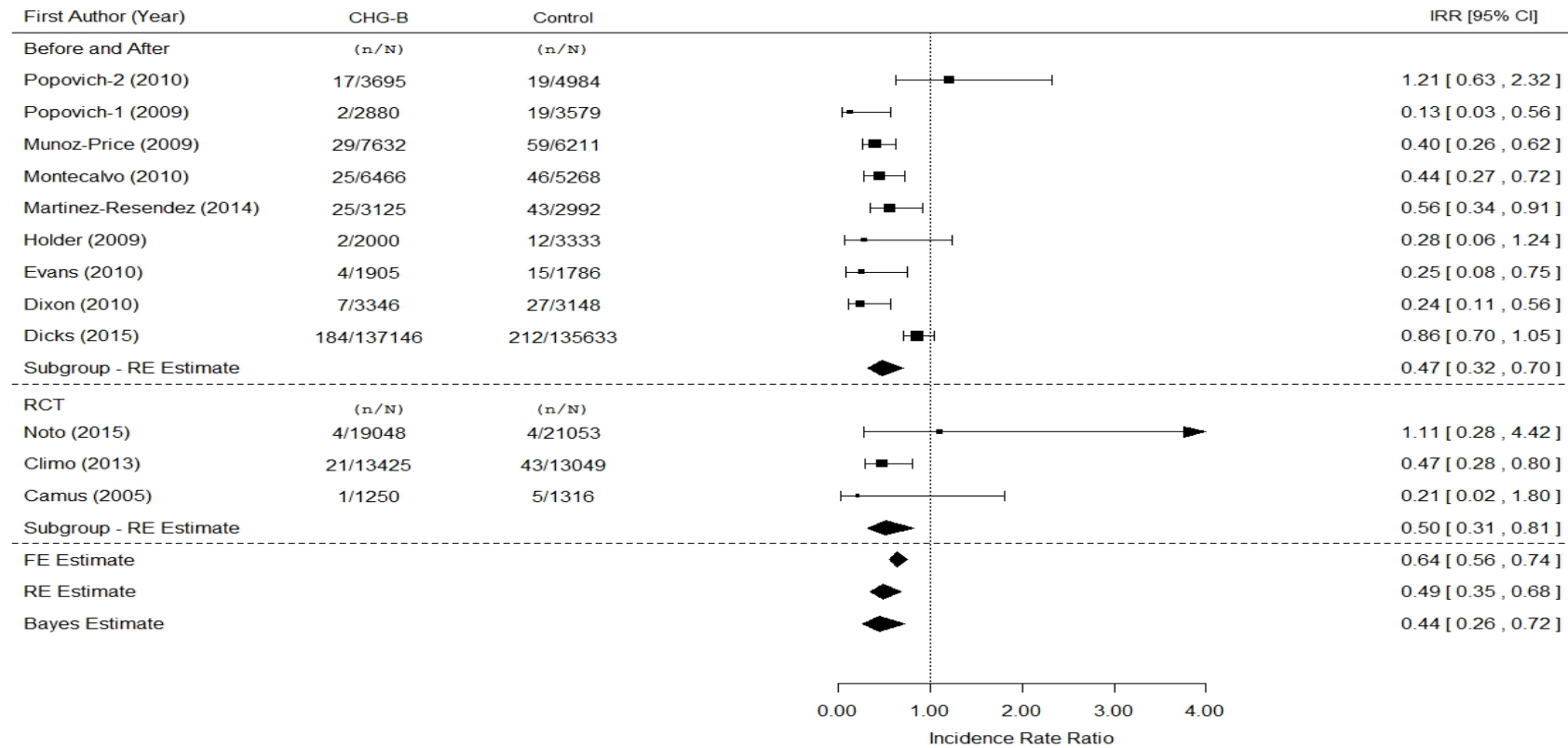


Figure 2. Forest plots presenting the effectiveness of CHG bathing in reducing: BSI (panel A), CLABSI (panel B), VAP (panel C), CAUTI (panel D), MRSA colonisation (panel E), MRSA associated BSI (panel F), VRE colonisation (panel G), VRE associated BSI (panel H), and Clostridium Difficile infections (panel I). FE = fixed effects, RE = random effects.

(c) VAP

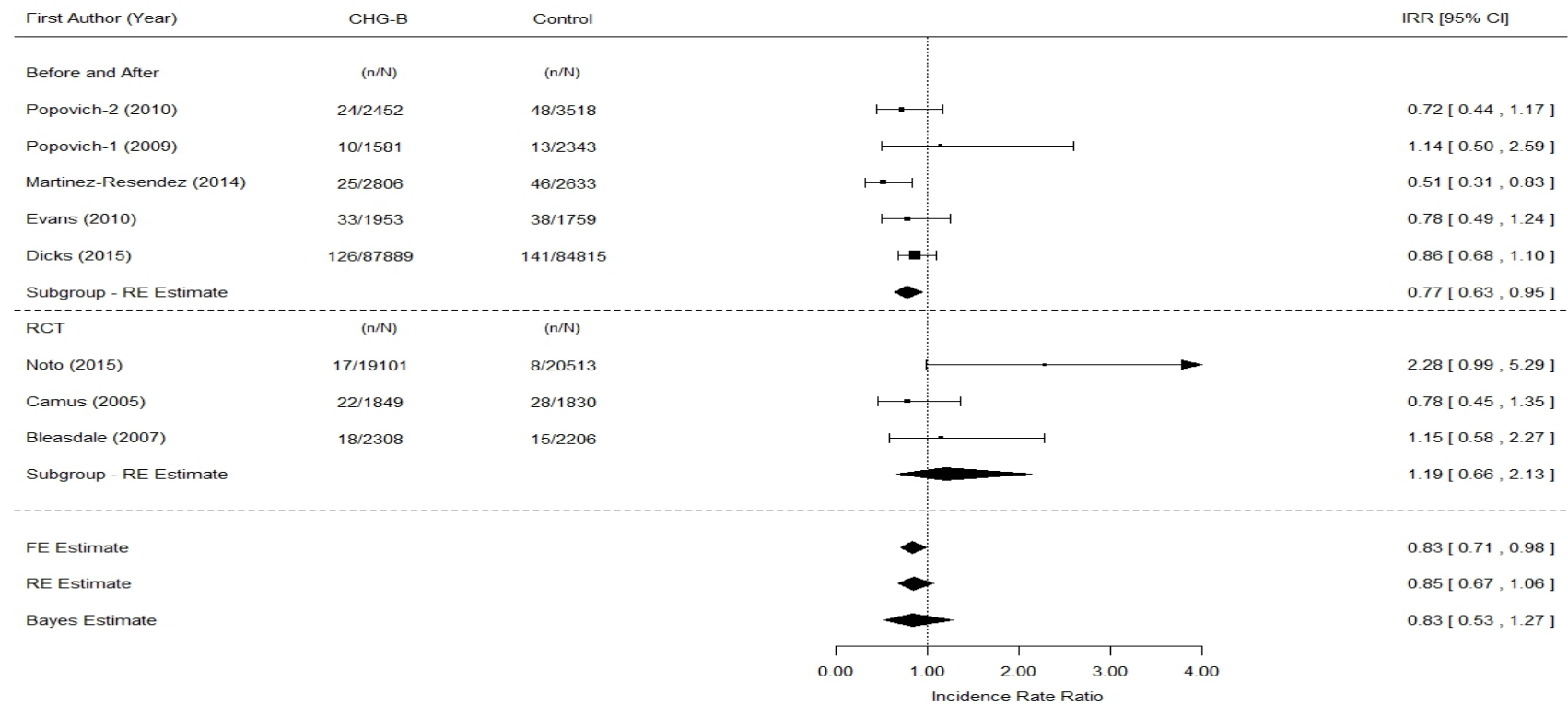


Figure 2. Forest plots presenting the effectiveness of CHG bathing in reducing: BSI (panel A), CLABSI (panel B), VAP (panel C), CAUTI (panel D), MRSA colonisation (panel E), MRSA associated BSI (panel F), VRE colonisation (panel G), VRE associated BSI (panel H), and Clostridium Difficile infections (panel I). FE = fixed effects, RE = random effects.

(d) CAUTI

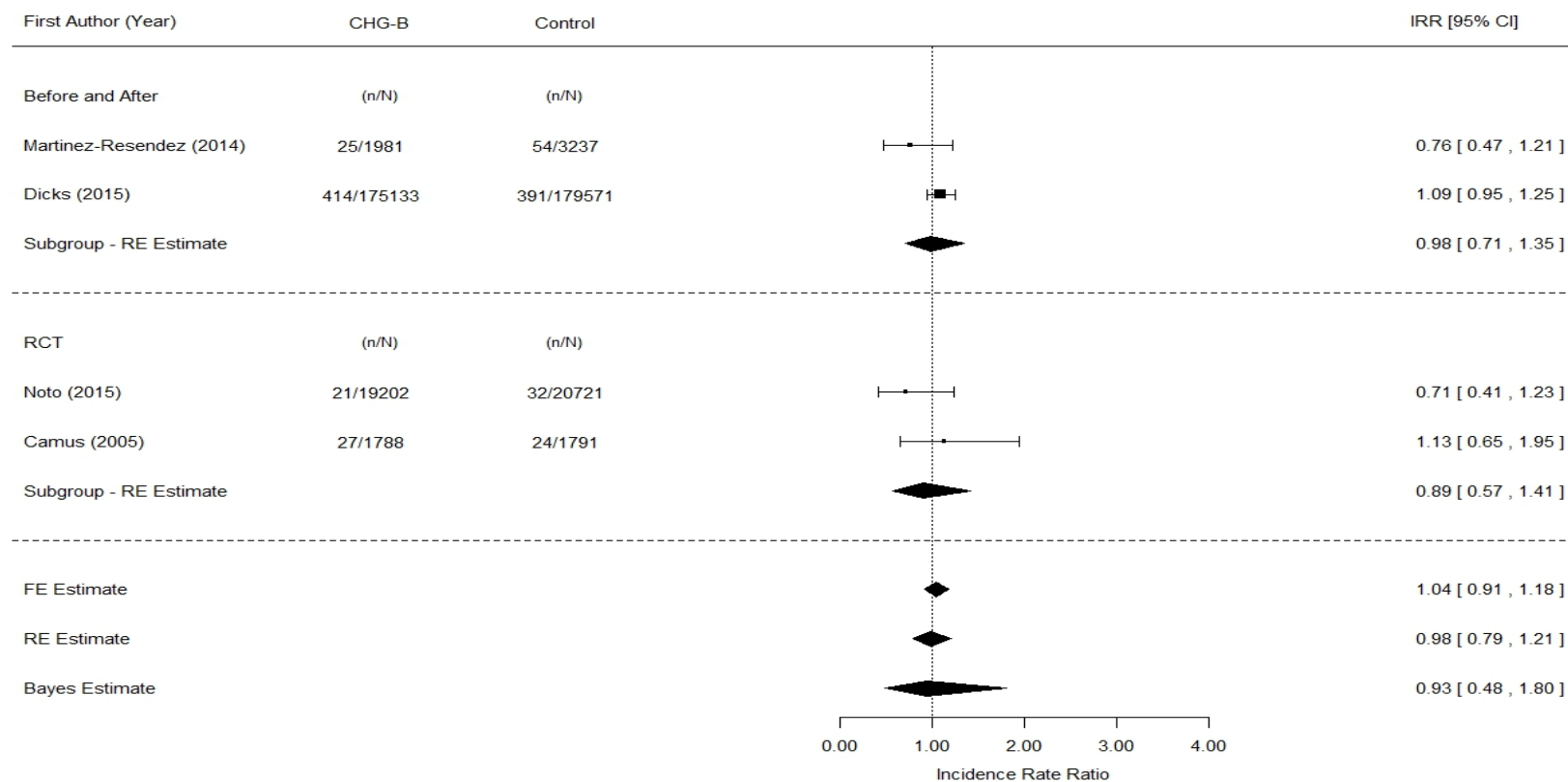


Figure 2. Forest plots presenting the effectiveness of CHG bathing in reducing: BSI (panel A), CLABSI (panel B), VAP (panel C), CAUTI (panel D), MRSA colonisation (panel E), MRSA associated BSI (panel F), VRE colonisation (panel G), VRE associated BSI (panel H), and Clostridium Difficile infections (panel I). FE = fixed effects, RE = random effects.

(e) MRSA-C

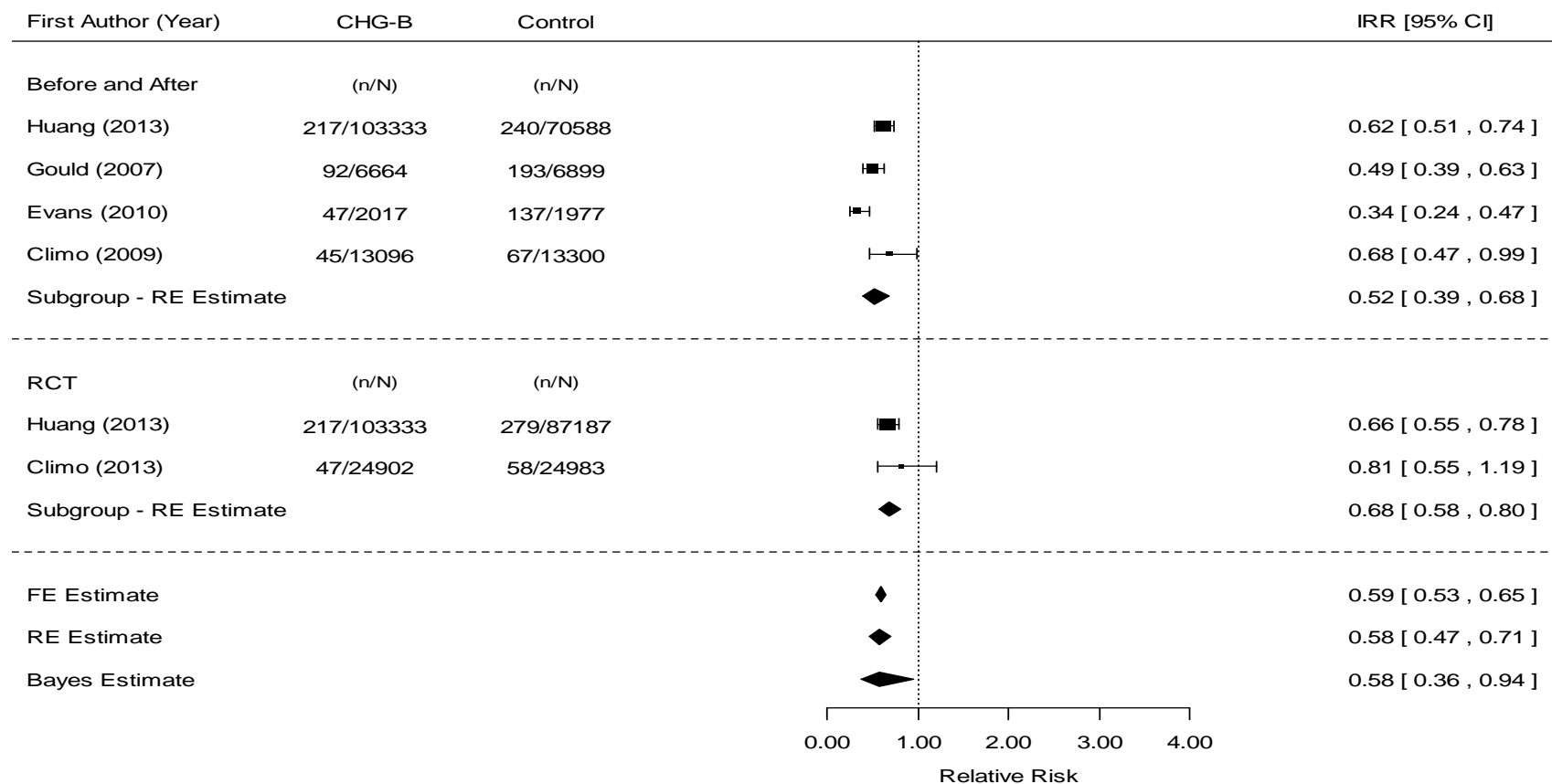


Figure 2. Forest plots presenting the effectiveness of CHG bathing in reducing: BSI (panel A), CLABSI (panel B), VAP (panel C), CAUTI (panel D), MRSA colonisation (panel E), MRSA associated BSI (panel F), VRE colonisation (panel G), VRE associated BSI (panel H), and Clostridium Difficile infections (panel I). FE = fixed effects, RE = random effects.

(f) MRSA-B

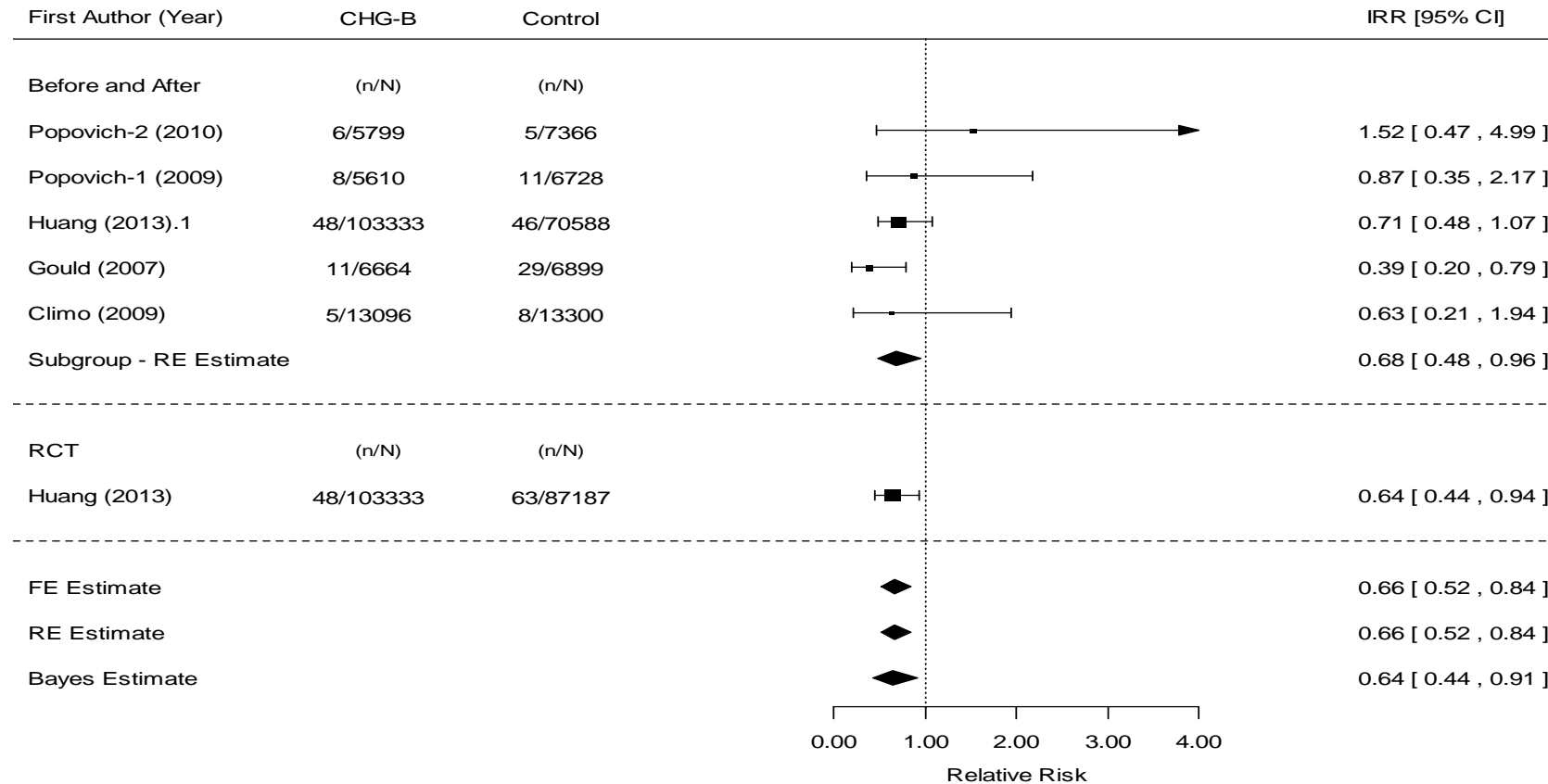


Figure 2. Forest plots presenting the effectiveness of CHG bathing in reducing: BSI (panel A), CLABSI (panel B), VAP (panel C), CAUTI (panel D), MRSA colonisation (panel E), MRSA associated BSI (panel F), VRE colonisation (panel G), VRE associated BSI (panel H), and Clostridium Difficile infections (panel I). FE = fixed effects, RE = random effects.

(g) VRE-C

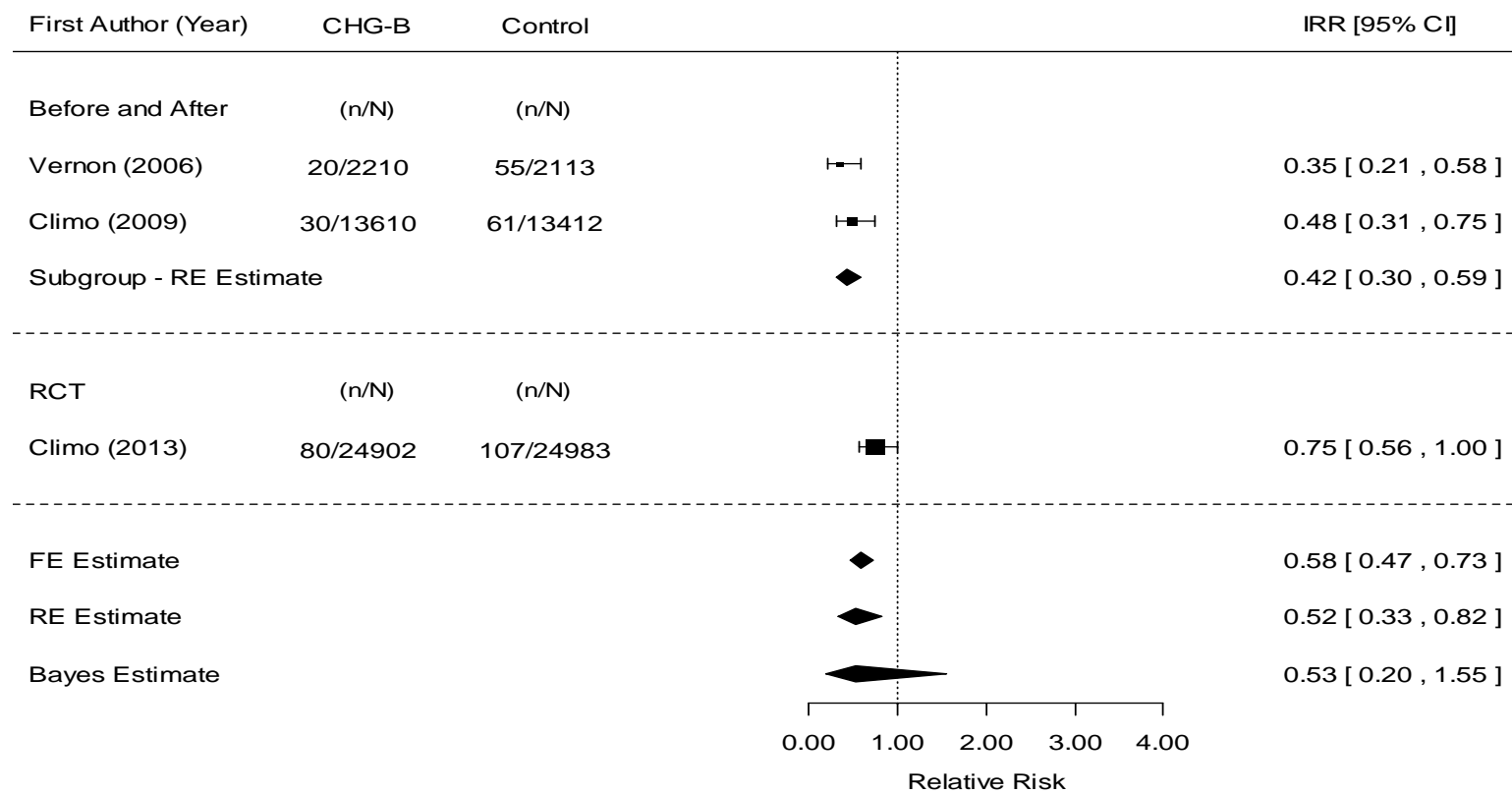


Figure 2. Forest plots presenting the effectiveness of CHG bathing in reducing: BSI (panel A), CLABSI (panel B), VAP (panel C), CAUTI (panel D), MRSA colonisation (panel E), MRSA associated BSI (panel F), VRE colonisation (panel G), VRE associated BSI (panel H), and Clostridium Difficile infections (panel I). FE = fixed effects, RE = random effects.

(h) VRE-B

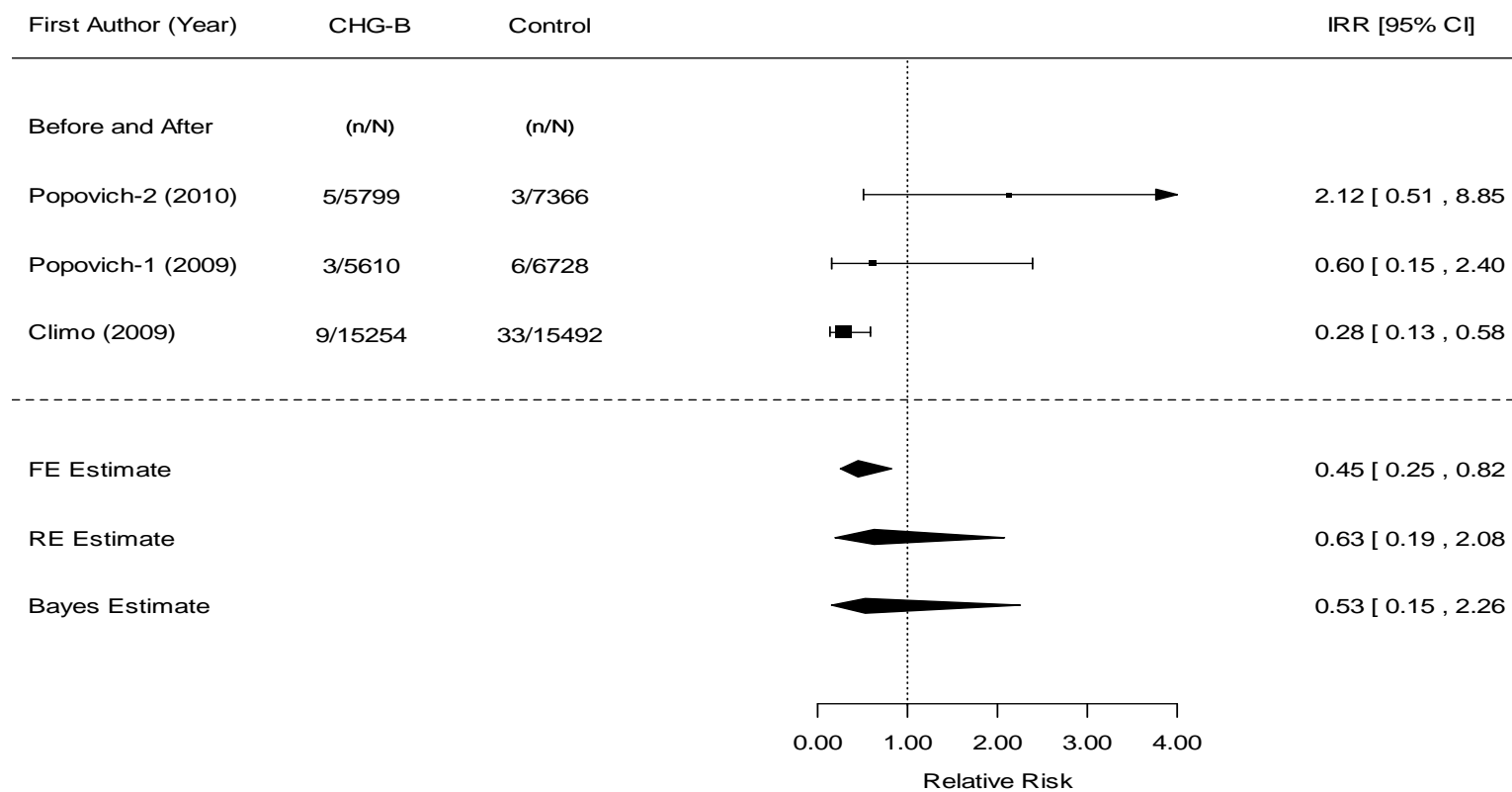


Figure 2. Forest plots presenting the effectiveness of CHG bathing in reducing: BSI (panel A), CLABSI (panel B), VAP (panel C), CAUTI (panel D), MRSA colonisation (panel E), MRSA associated BSI (panel F), VRE colonisation (panel G), VRE associated BSI (panel H), and Clostridium Difficile infections (panel I). FE = fixed effects, RE = random effects.

(i) c-diff

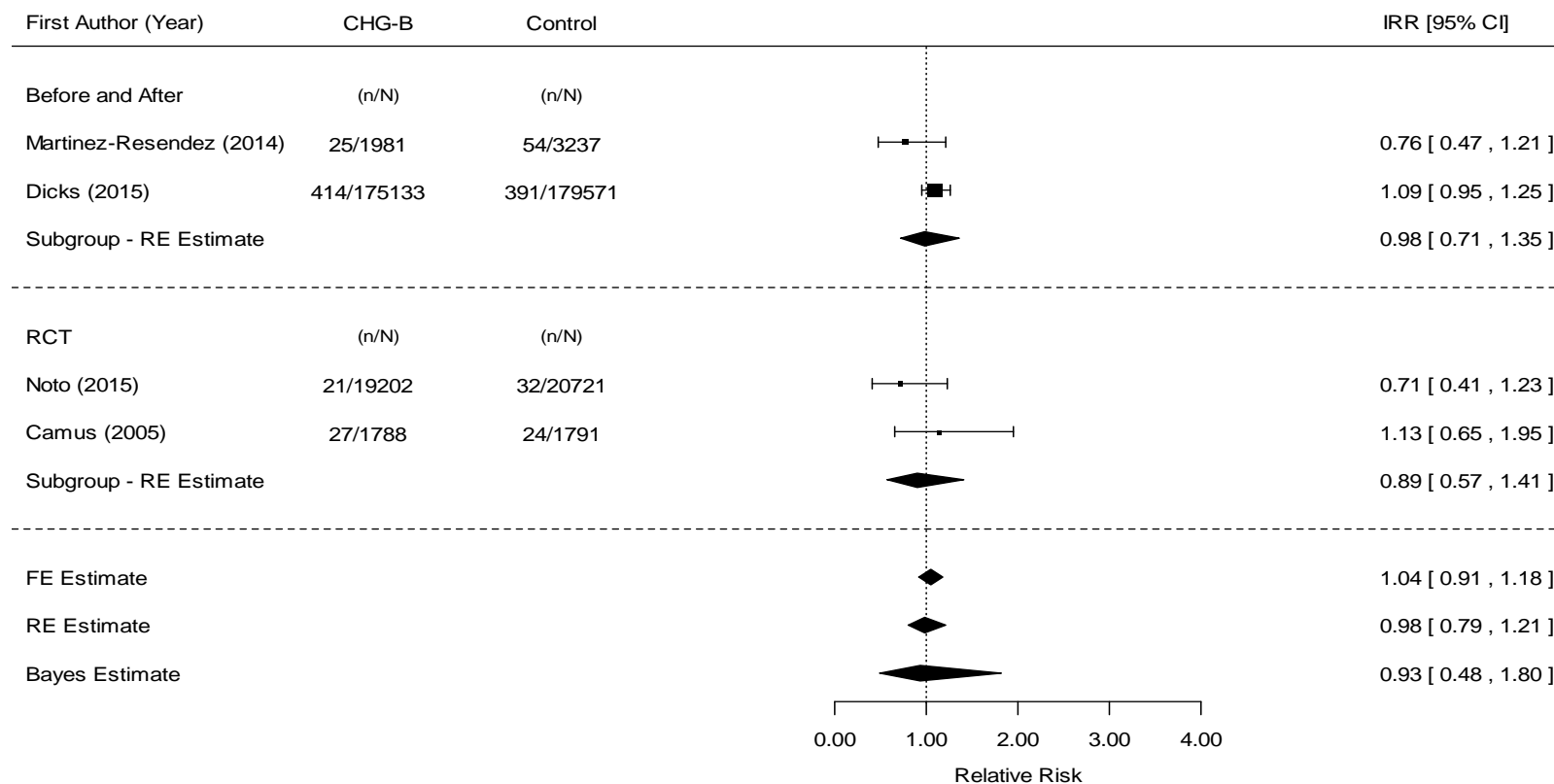


Figure 2. Forest plots presenting the effectiveness of CHG bathing in reducing: BSI (panel A), CLABSI (panel B), VAP (panel C), CAUTI (panel D), MRSA colonisation (panel E), MRSA associated BSI (panel F), VRE colonisation (panel G), VRE associated BSI (panel H), and Clostridium Difficile infections (panel I). FE = fixed effects, RE = random effects.