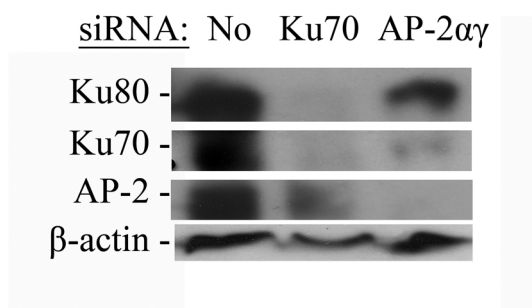
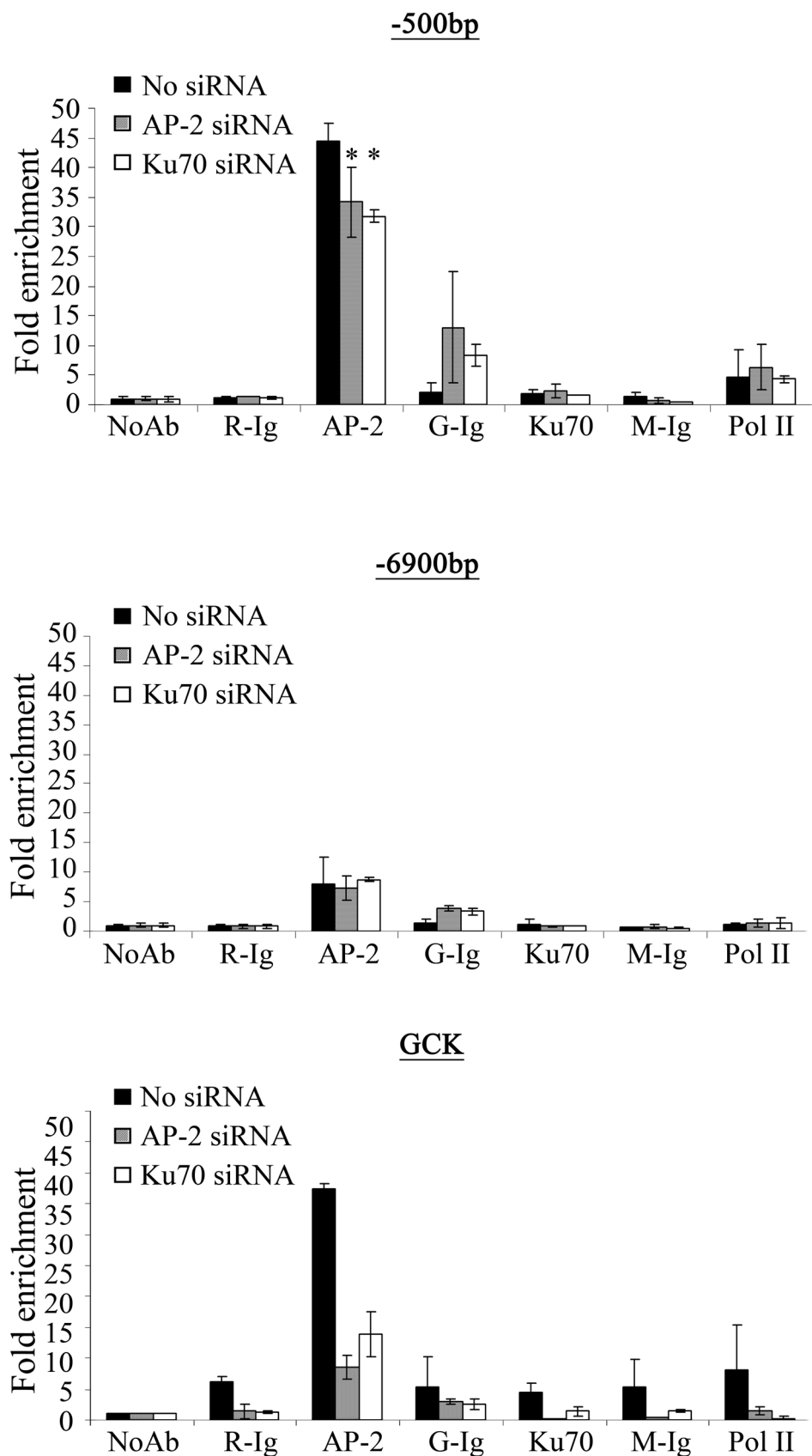


A



B



Additional data 5. Ku proteins are necessary for the recruitment of AP-2 on the proximal ERBB2 gene promoter in SKBR3 cell line.

A. Chromatin was extracted from SKBR3 cells transfected or not with AP-2 ($\alpha\gamma$) or Ku70 siRNAs (above). Protein expression was verified by immunoblot. **B.** DNA amplified after chromatin immunoprecipitation with AP-2, Ku70 and RNA Polymerase II (Pol II) specific antibodies. ChIP with control antibodies (Ig) are presented on the left of each experimental point (R: rabbit, G: goat and M: mouse). Graphs show the fold enrichment of the target sequence, compared to the no-antibody (NoAb) condition. GCK sequence corresponds to a positive control for Ku recruitment. *: p-values <0,05% compared to the No siRNA condition.