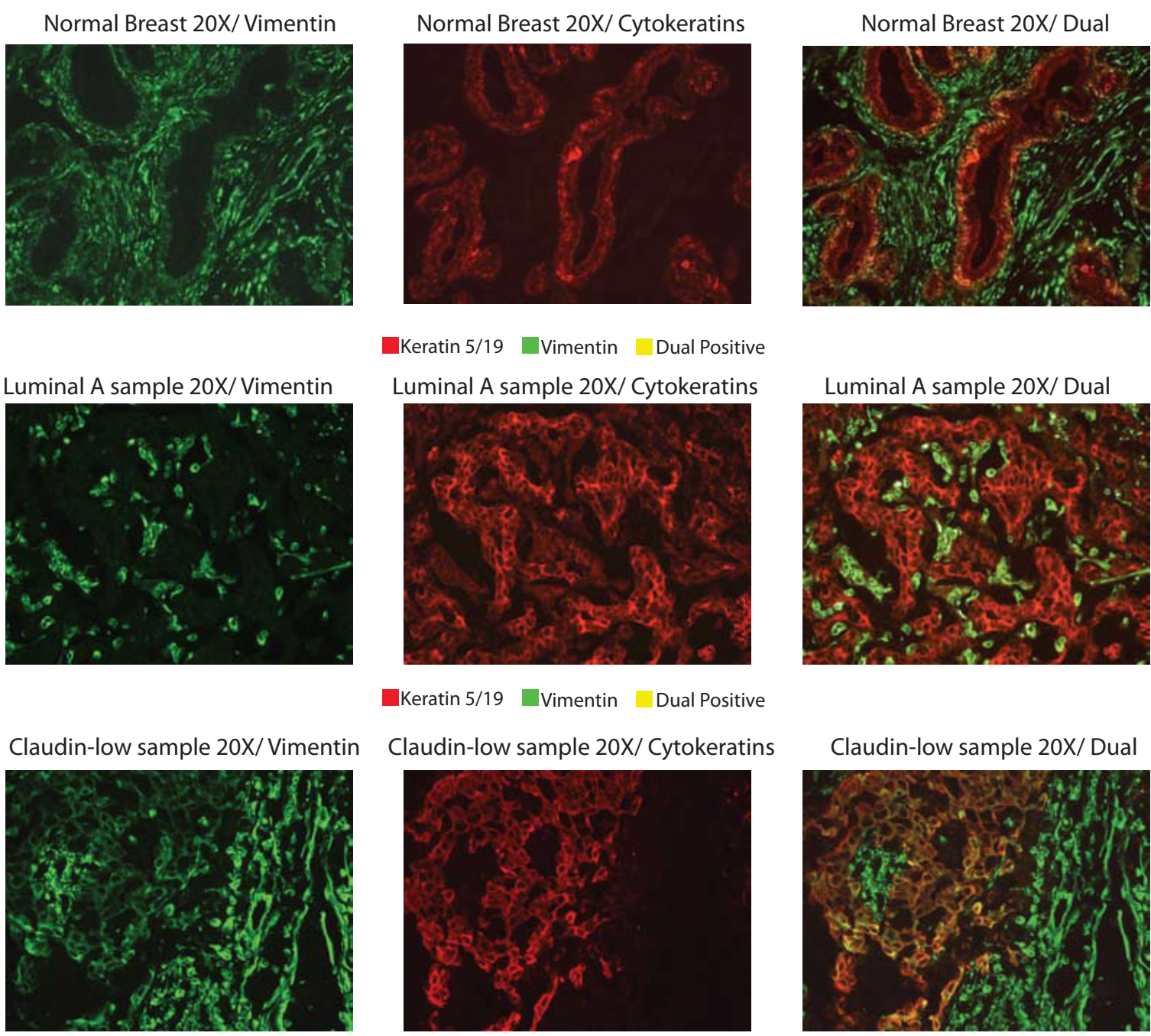


A**B**

Vimentin and Pan-Cytokeratin IF Dual Staining in 86 Breast Cancers.

Subtype	Samples with Dual Negativity	%	Samples with Dual Positivity	%	Total Samples
Claudin-low	9	45%	11	55%	20
Basal-like	4	22%	14	78%	18
HER2-enriched	6	86%	1	14%	7
Luminal B	20	91%	2	9%	22
Luminal A	19	100%	0	0%	19
Total	58	67%	28	33%	86

Statistics (Chi-square test)

	P-value
Claudin-low vs rest	0.01
Basal-like vs rest	0.001
Claudin-low vs Basal-like	0.1394