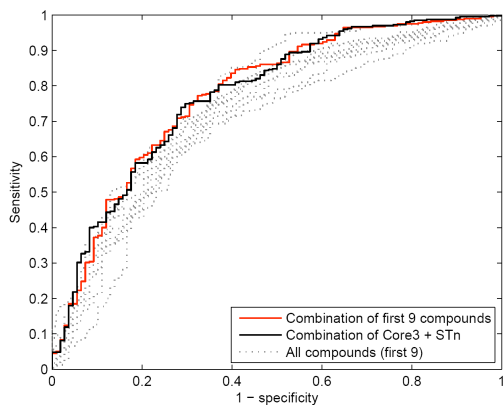
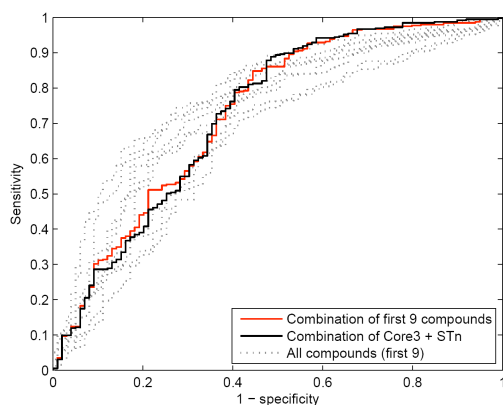


A



B



Compound	Area	Sera from patients with benign breast disease used to define cut-off				Area	Sera from age-matched healthy females used to define cut-off			
		Mean + 2SD		Mean + 4SD			Mean + 2SD		Mean + 4SD	
		Sens (%)	Spec (%)	Sens (%)	Spec (%)		Sens (%)	Spec (%)	Sens (%)	Spec (%)
MUC1	0.726	2.03	97.22	1.01	99.07	0.788	11.14	96.97	2.78	98.99
TnMUC1	0.695	2.03	99.07	0.76	99.07	0.744	5.57	97.98	3.29	98.99
STn MUC1*	0.727	11.14	97.22	7.59	98.15	0.736	9.87	97.98	6.84	97.98
STMUC1	0.693	3.04	99.07	2.53	99.07	0.699	9.87	95.96	6.33	98.99
C3MUC1*	0.748	21.27	94.44	17.97	98.15	0.693	10.13	93.94	6.08	96.97
C3S6MUC1*	0.714	14.18	96.30	10.13	97.22	0.639	4.05	96.97	2.28	98.99
LeCC3MUC1*	0.755	8.10	96.30	6.08	97.22	0.692	7.59	96.97	5.32	97.98
SLeCC3MUC1	0.722	3.29	98.15	3.04	98.15	0.713	6.08	98.99	3.54	98.99
LeCC3S6MUC1*	0.773	6.58	98.15	2.78	98.15	0.784	6.08	98.99	2.78	98.99
Comb	0.777	10.63	97.22	4.81	99.07	0.730	10.63	95.96	4.81	97.98
Comb Subset C3 + STn (*)	0.776	10.38	97.22	4.56	100.0	0.726	10.38	95.96	4.56	97.98
C3Thr	0.689	4.30	96.30	2.28	98.15	0.688	1.77	96.97	1.27	97.98

*MUC1 glycans in the Combination subset