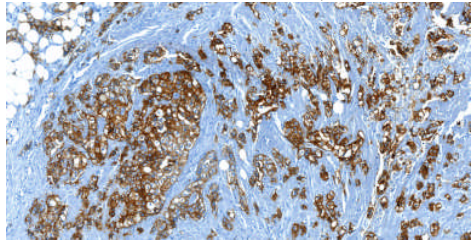
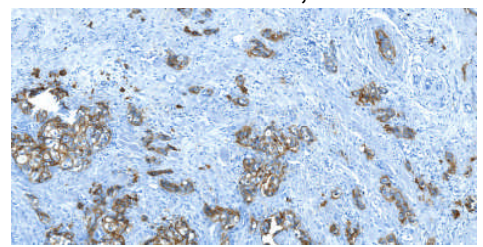


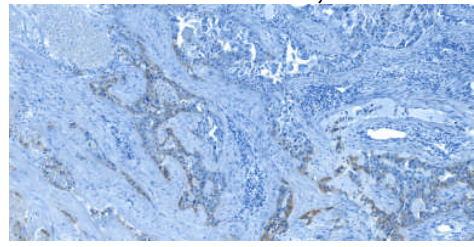
C. HER1 IHC = 3+; HER2-



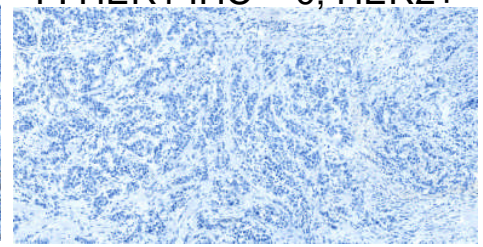
D. HER1 IHC=2+; HER2+



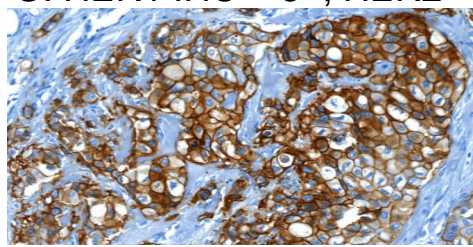
E. HER1 IHC = 1+; HER2+



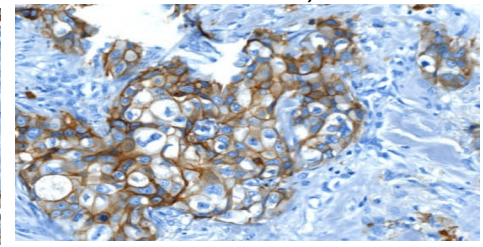
F. HER1 IHC = 0; HER2+



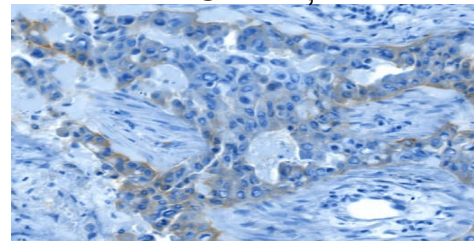
G. HER1 IHC = 3+; HER2-



H. HER1 IHC=2+; HER2+



I. HER1 IHC = 1+; HER2+



J. HER1 IHC = 0; HER2+

