

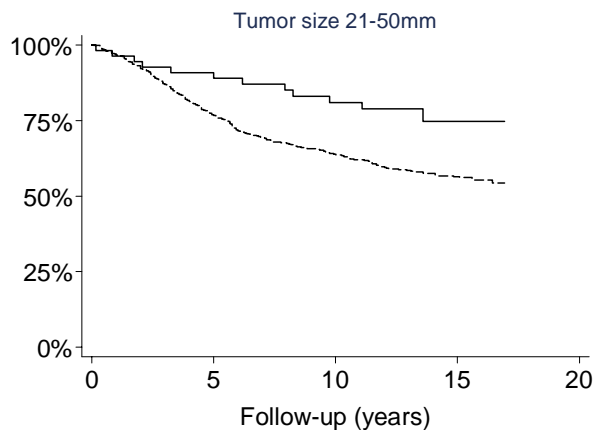
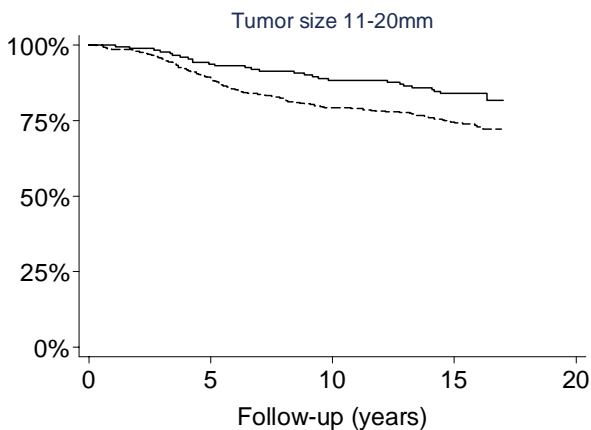
No. At risk

screened	408	379	345	313
non-scr	1476	1086	819	658

LogRank ChiSquared: 60,51 p<.0001 RR:2.91

screened	158	153	142	132
non-scr	207	175	143	116

LogRank ChiSquared: 4,73 p=.0296 RR:2.04



No. At risk

screened	179	163	148	133
non-scr	576	465	358	297

LogRank ChiSquared: 7,39 p=.0066 RR:1.75

screened	55	49	41	37
non-scr	581	392	281	214

LogRank ChiSquared: 6,86 p<=.0088 RR:2.08