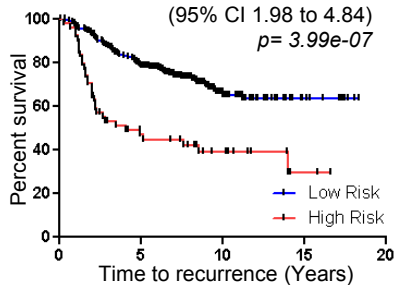
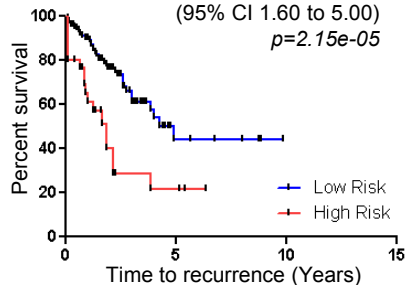
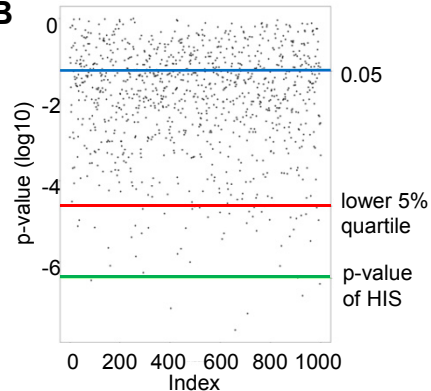


A**NKI295 cohort****Hazard Ratio: 3.10**

(95% CI 1.98 to 4.84)

 $p = 3.99e-07$ **UNC232 cohort****Hazard Ratio: 2.84**

(95% CI 1.60 to 5.00)

 $p = 2.15e-05$ **B****C**

NKI295 cohort			
Parameter	HR	95% CI	p-value
ER status	1.08	0.62-1.88	0.790
Grade	1.50	1.08-2.10	0.017
Size	1.84	1.16-2.91	0.010
Nodes	0.80	0.52-1.23	0.313
HIS	2.11	1.21-3.69	0.009

UNC232 cohort			
Parameter	HR	95% CI	p-value
ER status	0.81	0.44-1.52	0.514
Grade	1.59	0.92-2.74	0.094
Size	1.49	1.05-2.10	0.024
Nodes	5.88	2.36-14.6	0.000
HIS	2.59	1.32-5.10	0.006