

Primary evidence



Multimodality inputs

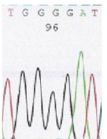
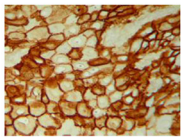


Computational models



Personalised diagnostics and therapeutics

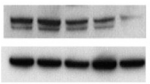
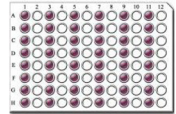
Clinical data



Gene mutation, overexpression
ctDNA, CTC, Biomarkers



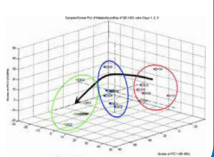
Experimental data



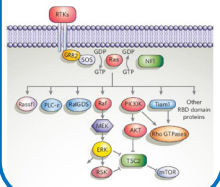
Cell cultures
Oncoprotein expression
Target validation
In vivo studies



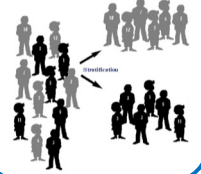
Omic profiles
Bioinformatics



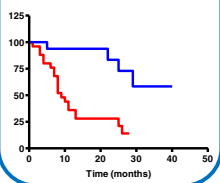
Pathway mapping



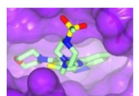
Patient stratification



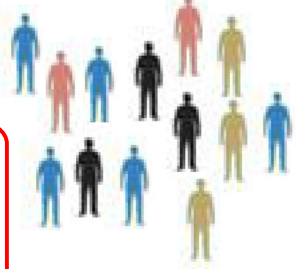
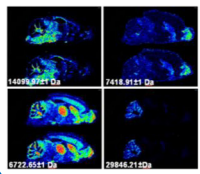
Prognostic information



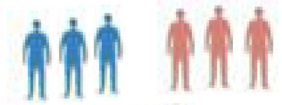
Targeted treatments



Therapeutic responses



Patients selected for targeted therapies or no further treatment



Treatment failure
Drug resistance

Further research

