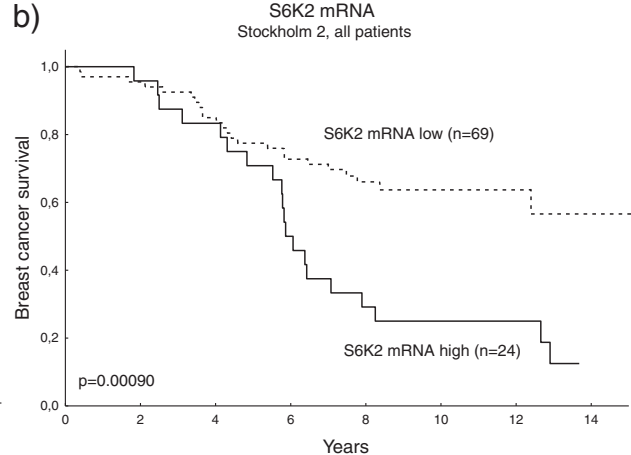
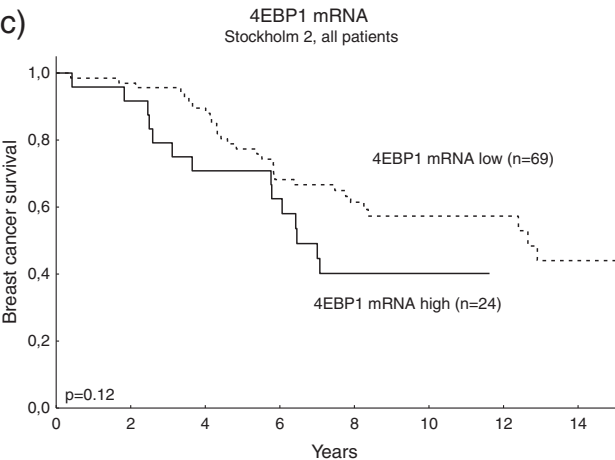


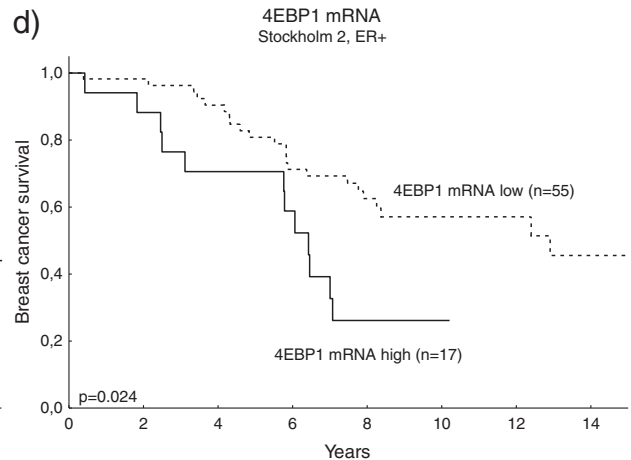
S6K1
BCS: HR (95%CI)=1.31 (0.63-2.72), $P=0.48$
DRFS: HR (95%CI)=1.01 (0.48-2.13), $P=0.98$



S6K2
BCS: HR (95%CI)=2.97 (1.61-5.48), $P=0.00051$
DRFS: HR (95%CI)=2.67 (1.45-4.90), $P=0.0016$



4EBP1
BCS: HR (95%CI)=2.16 (1.07-4.38), $P=0.033$
DRFS: HR (95%CI)=1.61 (0.80-3.25), $P=0.18$



4EBP1 (ER+)
BCS: HR (95%CI)=3.41 (1.52-7.65), $P=0.0028$
DRFS: HR (95%CI)=2.61 (1.17-5.80), $P=0.019$