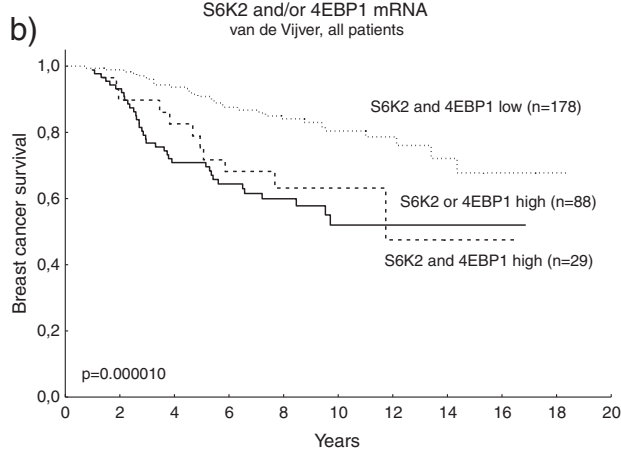
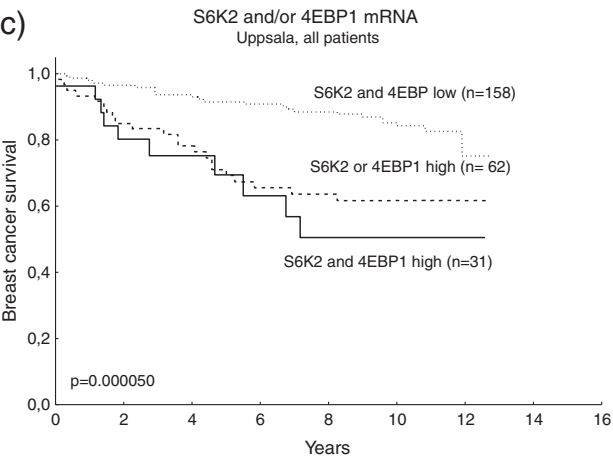


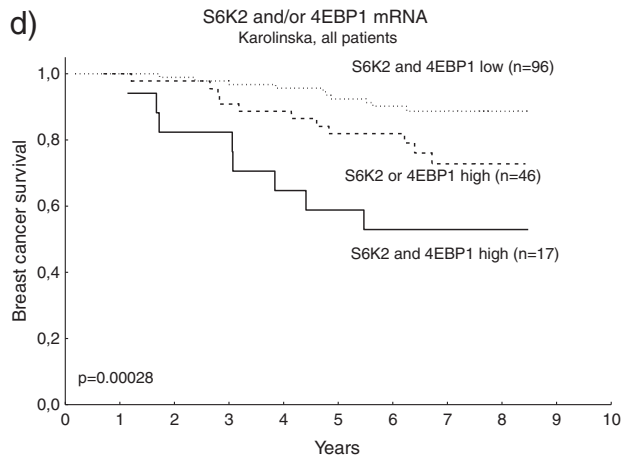
S6K2 AND/OR 4EBP1 HIGH  
BCS: HR (95%CI)=2.35 (1.27-4.36),  $P=0.0067$   
DRFS: HR (95%CI)=1.97 (1.07-3.64),  $P=0.030$



S6K2 AND/OR 4EBP1 HIGH  
BCS: HR (95%CI)=2.13 (1.30-3.49),  $P=0.0027$   
DRFS: HR (95%CI)=2.11 (1.39-3.20),  $P=0.00043$



S6K2 AND/OR 4EBP1 HIGH  
BCS: HR (95%CI)=1.72 (0.92-3.24),  $P=0.091$



S6K2 AND/OR 4EBP1 HIGH  
BCS: HR (95%CI)=2.62 (1.18-5.84),  $P=0.018$