

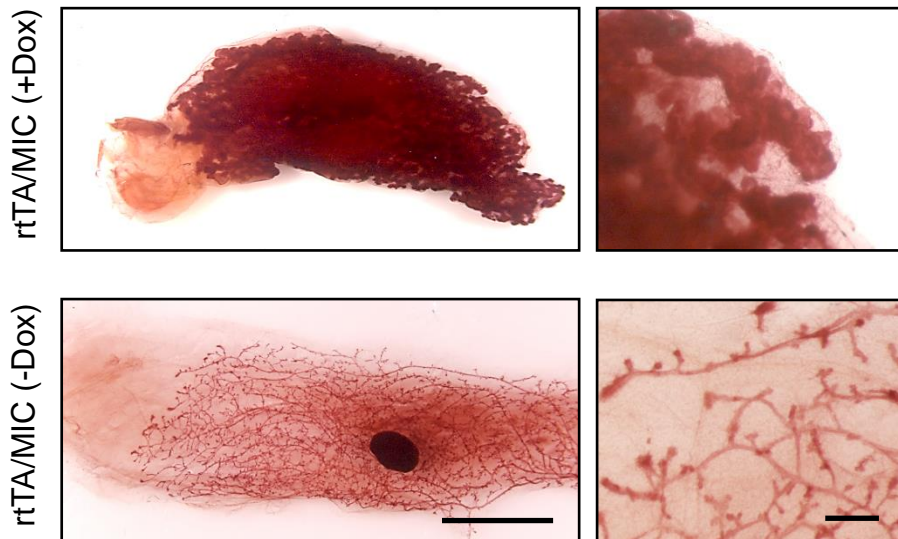
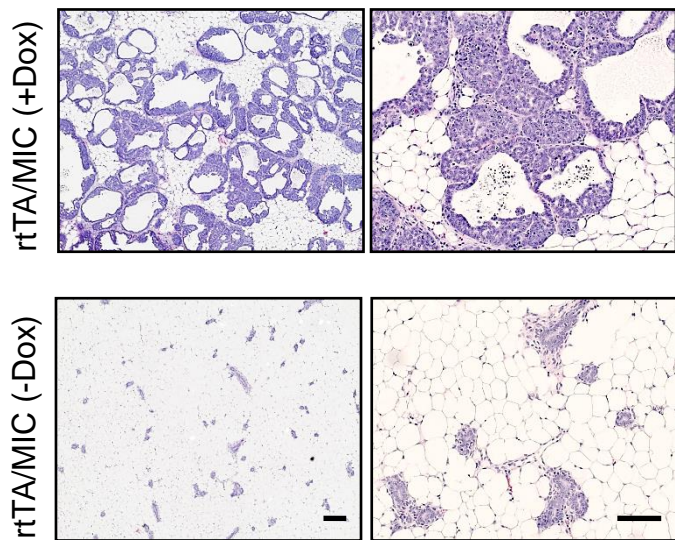
Figure S2

After 2 weeks of induction, mammary glands from rtTA/MIC mice are transformed

(A) Representative H&E-stained whole mount of a typical rtTA/MIC mammary gland after 2 weeks of induction as compared to a normal mammary gland from an un-induced control. (Scale bars: 0.5mm left; 5mm right).

(B) Representative H&E-stained sections of mammary glands from the same animals shown in (A). (Scale bars: 200 μ m left; 100 μ m right).

(C) Quantification of the average number of normal, hyperplastic, and filled ducts relative to the total number of ducts (expressed as a percentage) in mammary gland sections from rtTA/MIC mice induced for 2 weeks and matched controls (induced or un-induced). Error bars represent standard error of mean.

A**B****C**