

Figure S4

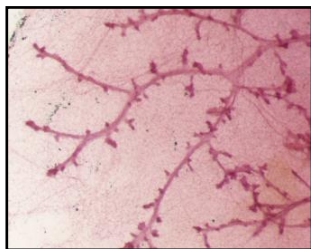
Mammary glands from control animals (both induced and un-induced) are normal

(A) Representative H&E-stained whole mount preparations of inguinal mammary glands from control animals of the indicated genotypes induced for 9 to 11 weeks or left un-induced. (Scale bars: 0.5mm left; 5mm, right).

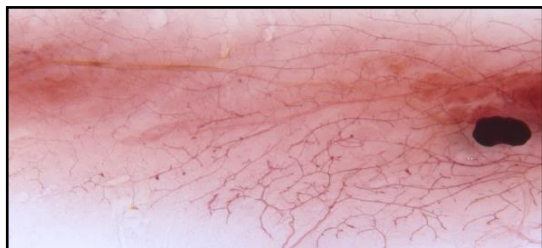
(B) Representative H&E-staining of mammary gland sections from induced and un-induced control animals of the same genotypes as indicated in (A). (Scale bars: 500 μ m, left column; 100 μ m, right column).

A

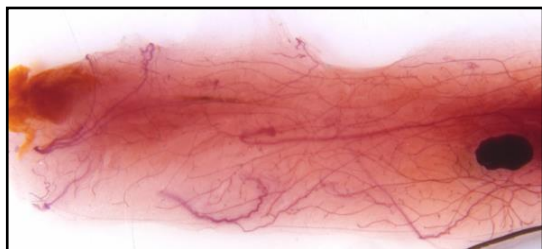
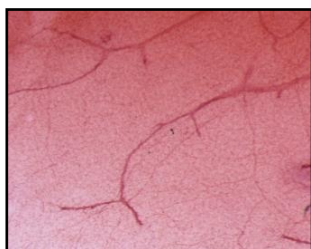
rtTA (-Dox)



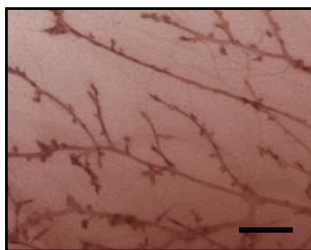
rtTA (+Dox)



MIC (-Dox)



MIC (+Dox)

**B**