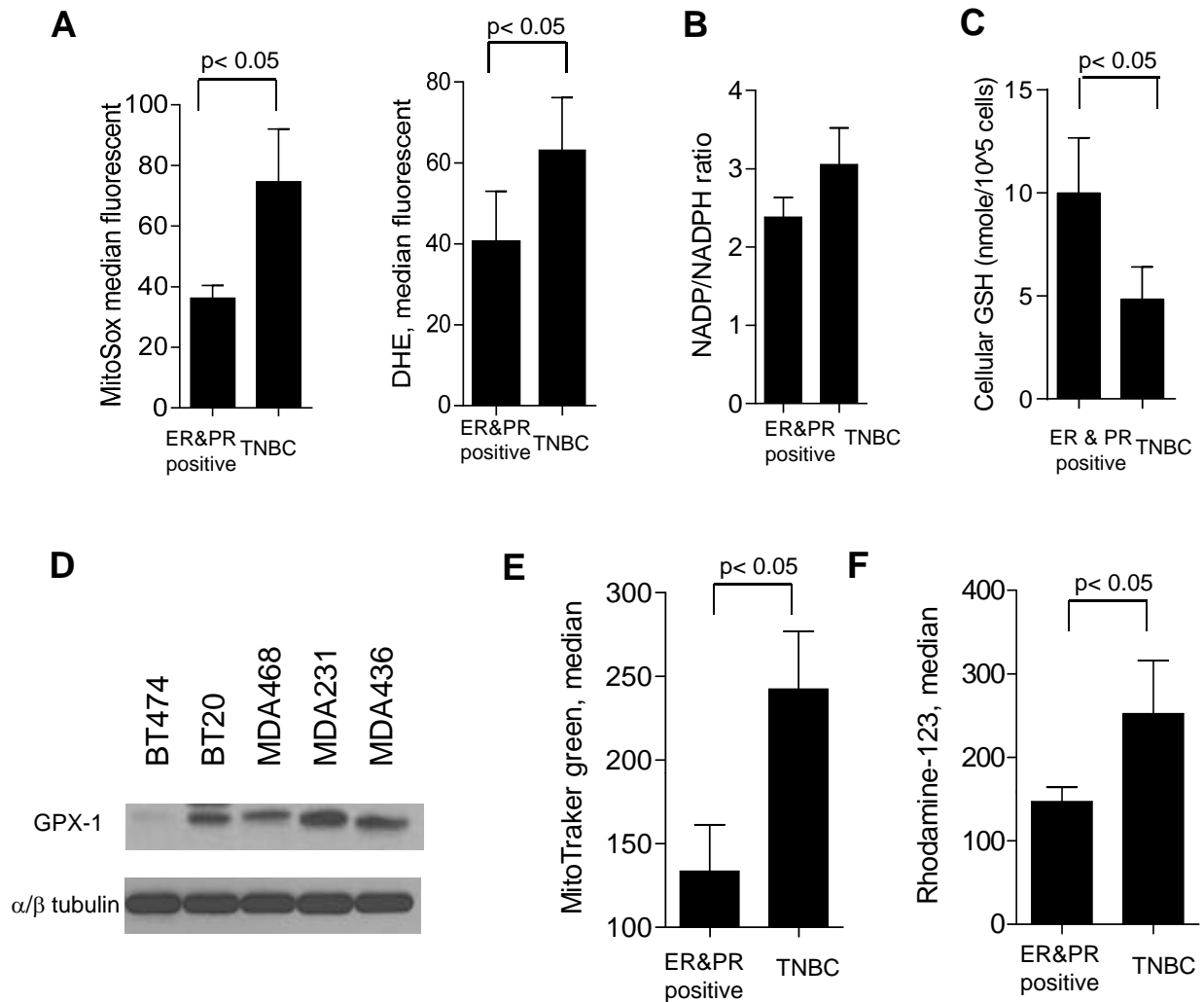


## Additional File 3



**Figure S3. Characterization of TNBC cells.** (A) Levels of ROS in breast cancer cells assessed by MitoSOX™ Red (Mitosox, left panel) and by dihydroethidium (DHE, right panel). (B) Comparison of NADP<sup>+</sup>/NADPH ratios in breast cancer cell lines between the TNBC group and the ER/PR-positive group. (C) GSH level is lower in TNBC cells compared to ER-PR positive cells. (D) Overexpression of GPX-1 in TNBC cells determined by western blot compare to ER-PR positive cells (BT474). One representative from at least three independent experiments is shown. (E) TNBC cells exhibit a higher mitochondrial mass compare to ER-PR positive cells. (F) TNBC cells exhibit a higher mitochondrial membrane potential compare to ER-PR positive cells. The bar graph represents mean  $\pm$  SD from three experiments. Note: TNBC cell lines included BT20, MDA468, MDA231, MDA436; ER/PR-positive cell lines included BT474, MCF7, T47D, ZR751.