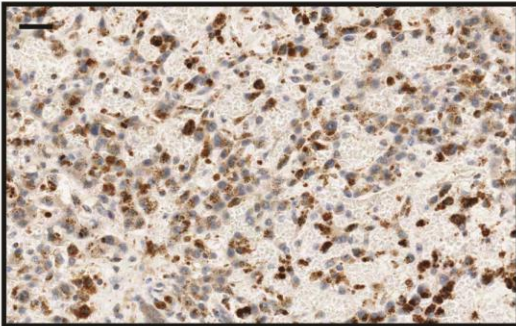
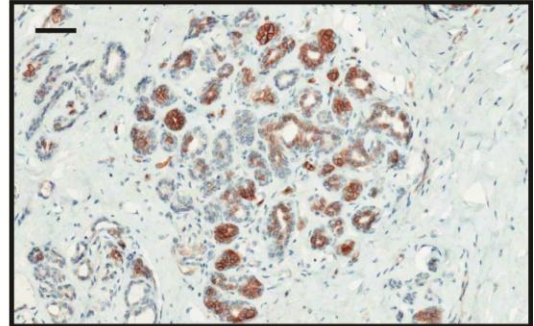


A



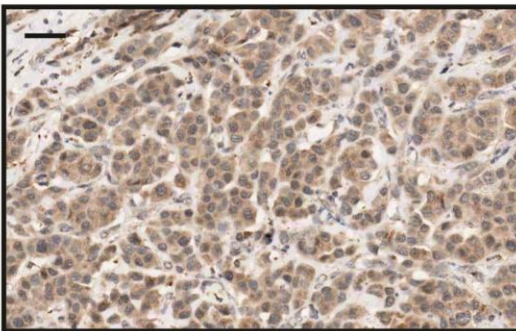
Normal liver tissue

B



Normal breast tissue

C



Breast tumour

Additional File 4: Optimization of the antibody against OCT1 for immunohistochemistry. The antibody for OCT1 was optimized using formalin fixed-paraffin embedded tissue from normal human liver (A) and breast (B), as well as tissue from breast tumours (C). Scale bar 30 um (A and B), 60 um (C).