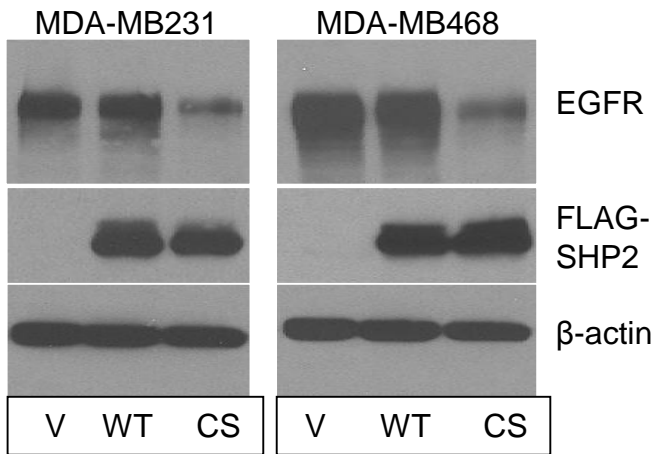
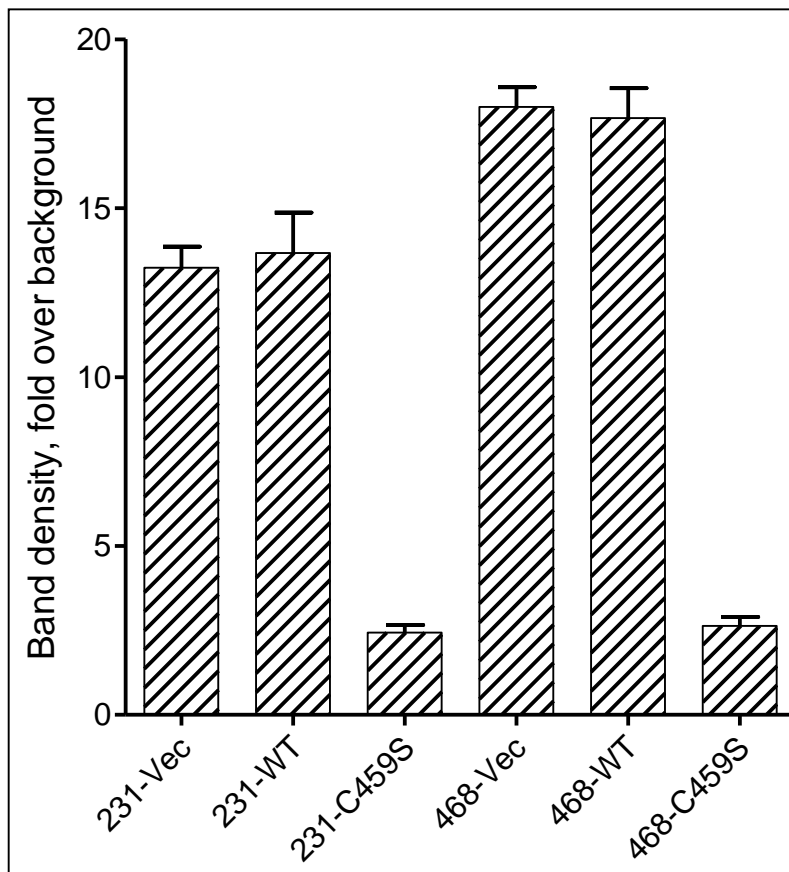


Supplementary Figure 2A and B: Silencing SHP2 expression in the MDA-MB231 (**A**) and MDA-MB468 (**B**) cells drastically reduced EGFR protein level, which became hypersensitive to EGF-induced degradation.

C**D**

Supplementary Figure 2C and D: Inhibition of SHP2 by dominant-negative (C459S-SHP2) expression led to a similar decrease (similar to shRNA-based inhibition) in EGFR protein level, but expression of vector alone or wild-type SHP2 (WT-SHP) did not. **A)** Immunoblotting data and **B)** bar graph showing band density measurement values of the immunoblotting data. The values represent at least three independent experiments.