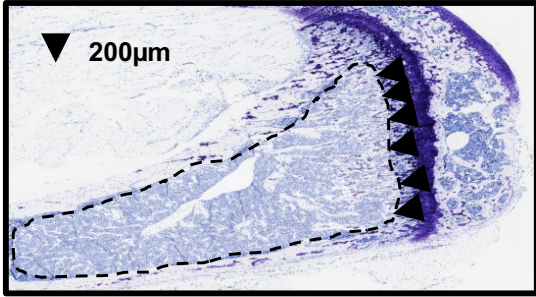
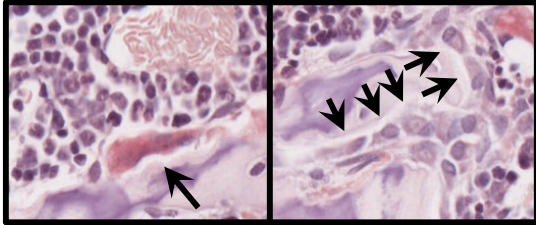
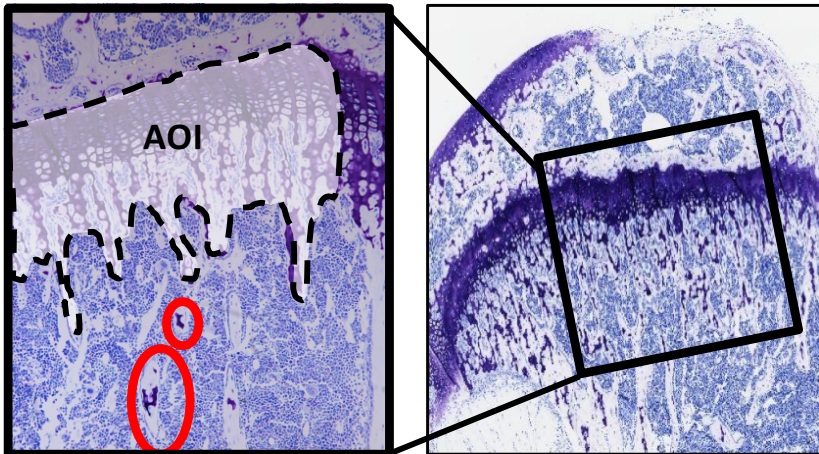





## a Osteoblast and osteoclast quantification



Osteoclast	Osteoblast
Multiple nuclei	Single, distinct nucleus
Ruffled border	Large golgi complex
In contact with bone surface	Appear in groups, in contact with bone surface
Pink, TRAP positive	Cuboidal shape

## b Quantification of proteoglycan-rich matrix



-  Excluded from analysis, not connected to trabecular bone surfaces extending from the epiphysis
-  Area of 1mmx1mm
-  Extracellular matrix rich area in metaphysis → Area of Interest (AOI)