

Figure S1

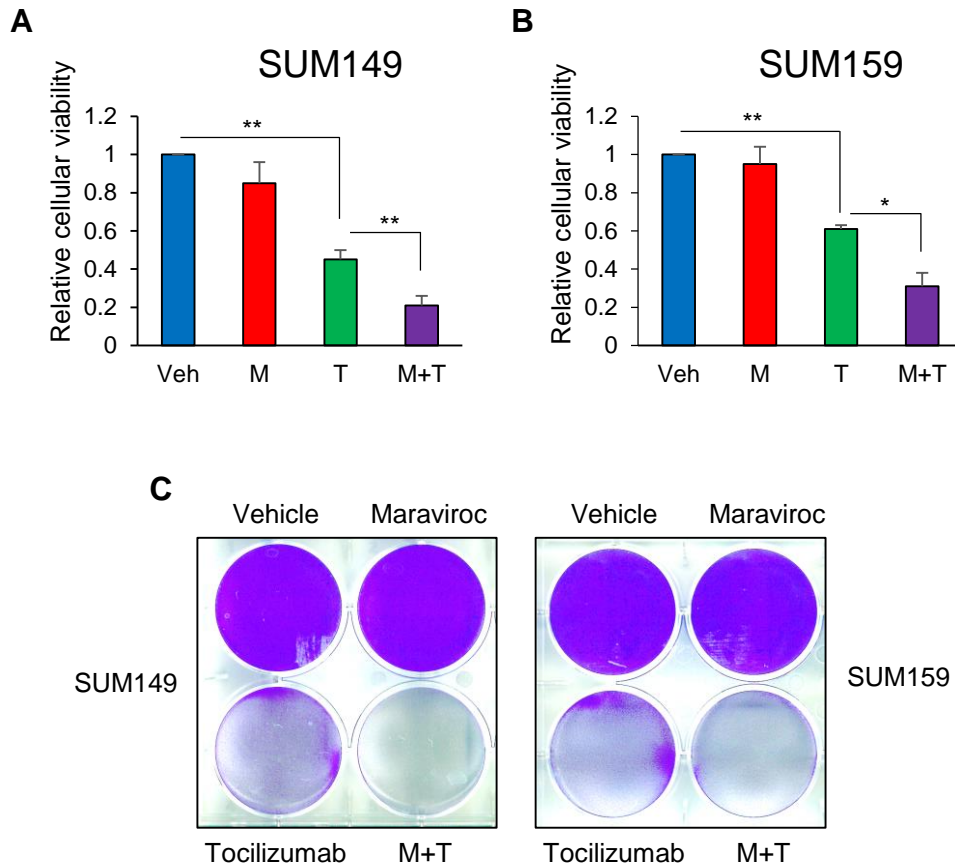


Figure S1: Cellular viability assays of co-cultured **a** SUM149 and **b** SUM159 cells on the bottom chambers with LECs on the top chamber in treatment of various concentration of maraviroc and **d** tocilizumab (Transwell plates). The cellular viability was measured for 72 h by MTT assay (* $P < 0.001$, $n = 3$). **c** Crystal violet staining assay was performed in treatment of maraviroc (2 μM), tocilizumab (200 $\mu\text{g/ml}$), and the combination of maraviroc and tocilizumab.

Figure S2

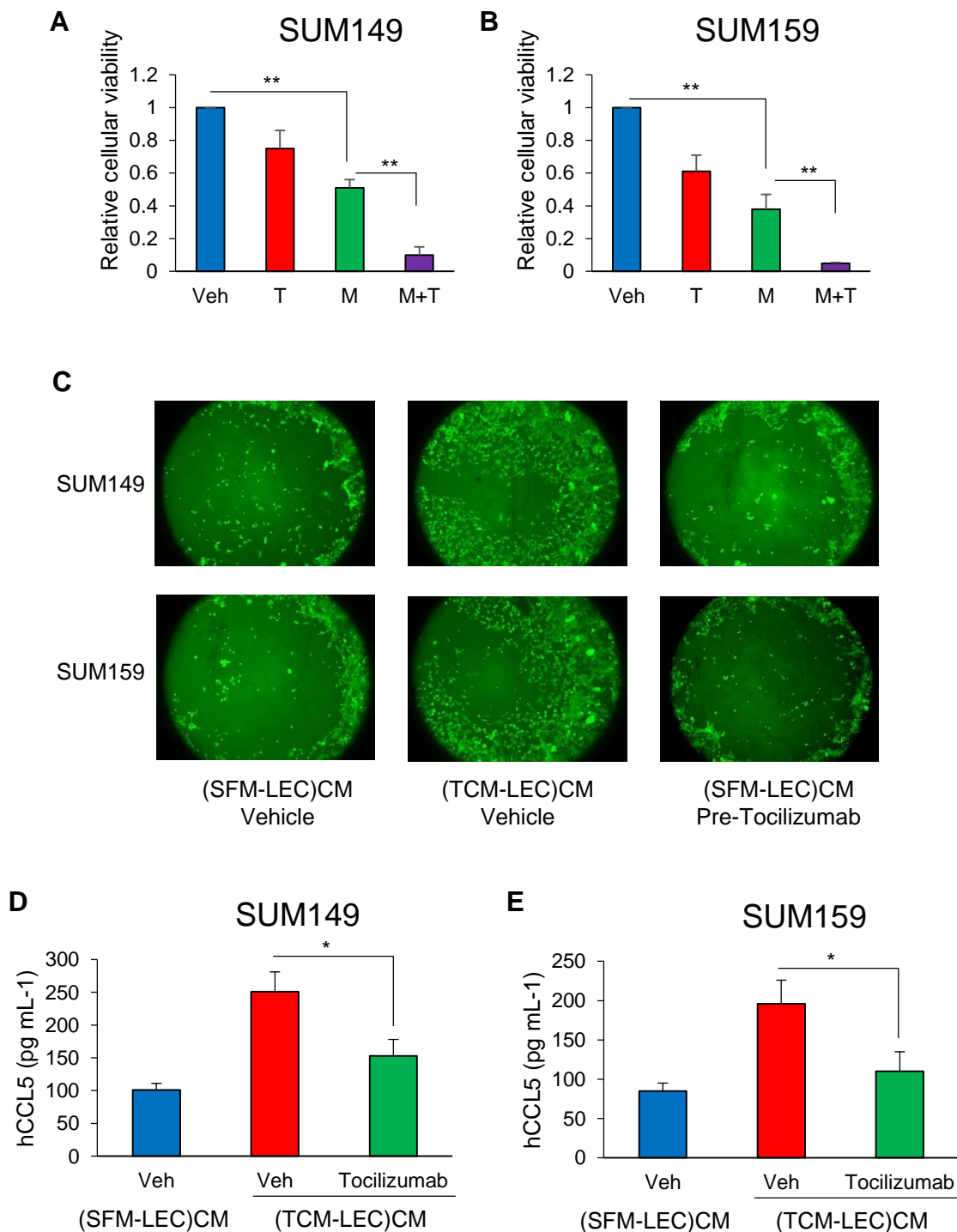


Figure S2: Migration assay of **a** SUM149 and **b** SUM159 cells (top chamber) in CM (bottom chamber) from LECs co-cultured with two TNBC cells with treatment of maraviroc, tocilizumab, and the combination. The migrated cells were counted for 24 h by the crystal violet staining. The representative migration was shown. (** $P < 0.001$, $n = 3$). **c** Migration assay of TNBC cells in CM from LECs co-cultured with TNBC cells with tocilizumab pre-treatment. The pre-labeled with Cell Tracker Green and the migration was measured using the Oris cell migration kit. ELISA of human CCL5 (Quantikine ELISA, R&D System) in the CM of LECs co-cultured with **d** SUM149 and **e** SUM159 cells pre-treated tocilizumab. (* $P < 0.001$, $n = 3$).