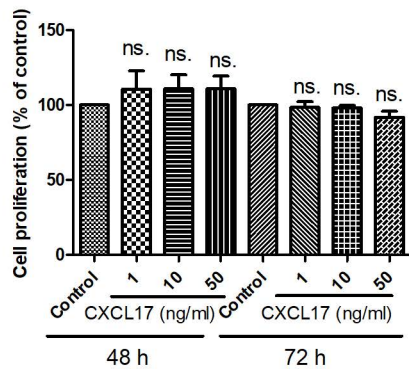
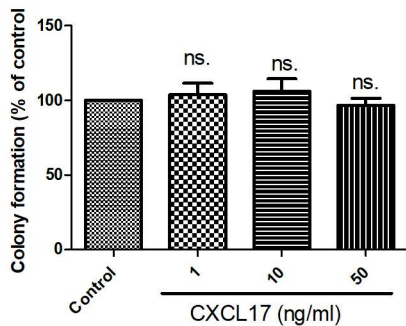
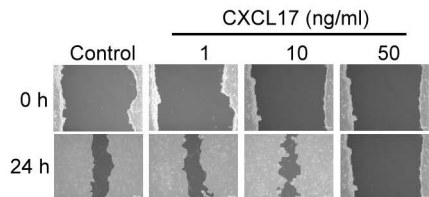
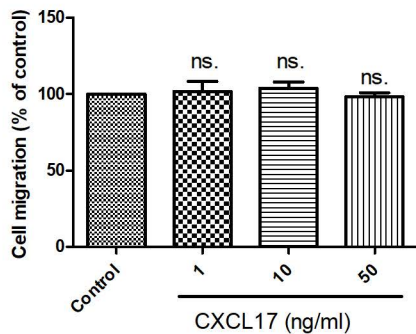


Additional files

Additional file 1:

Figure S1. CXCL17 did not affect the cell proliferation and migration of breast cancer.

The effect of CXCL17 in the cell proliferation (A), colony formation (B) and cell migration. Results are representative of at least three independent experiments and each value is the mean \pm SD of three determinations; ns., no significant difference with control ($p < 0.05$). (PDF, 200 kb).

A**B****C****Figure S1**