

Figure S1

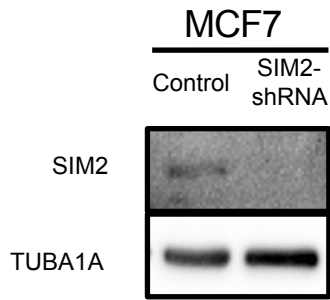


Figure S2

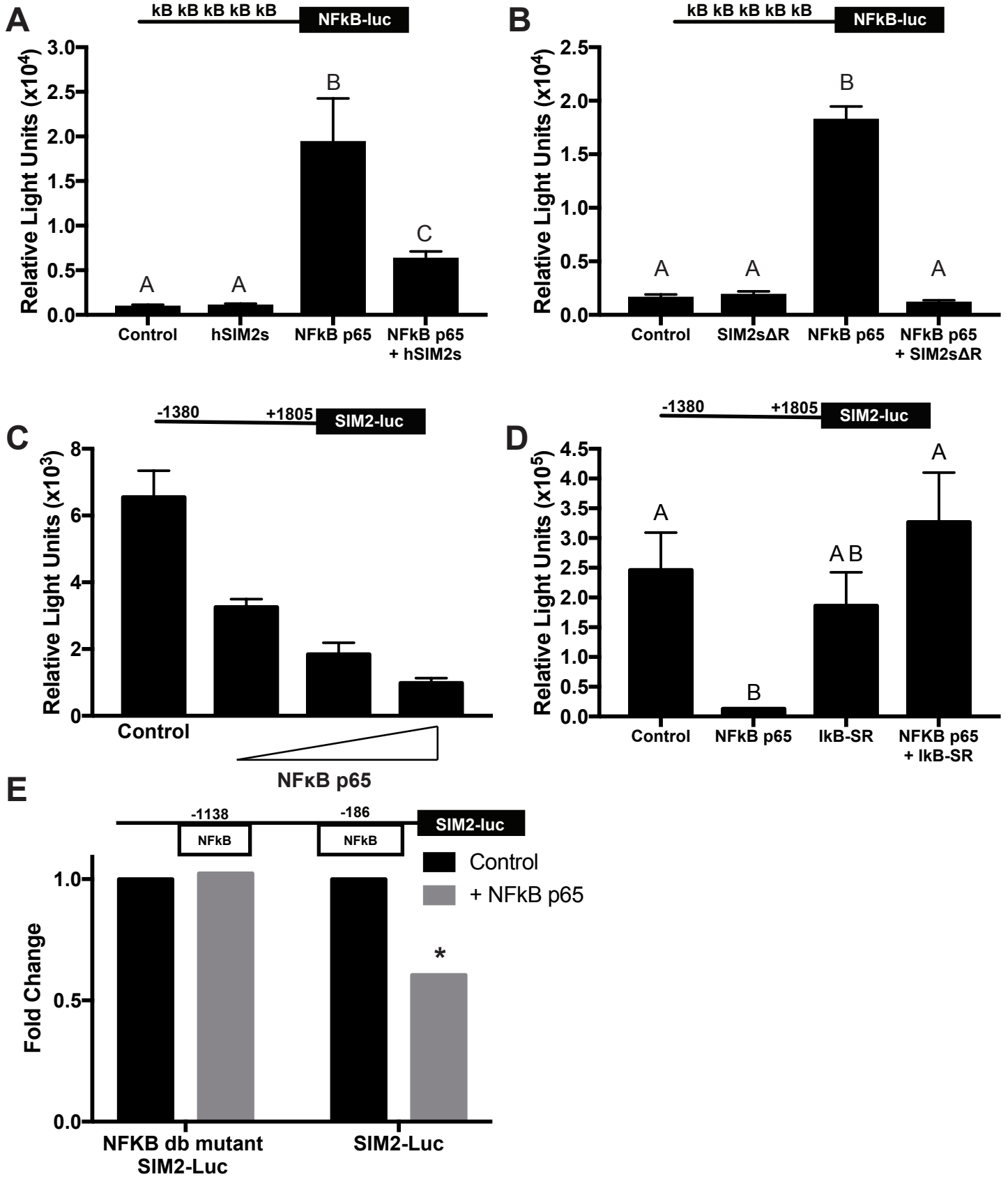


Figure S3

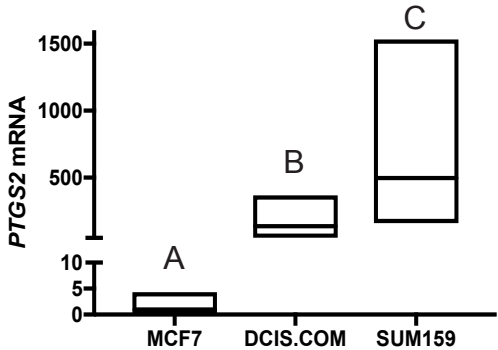
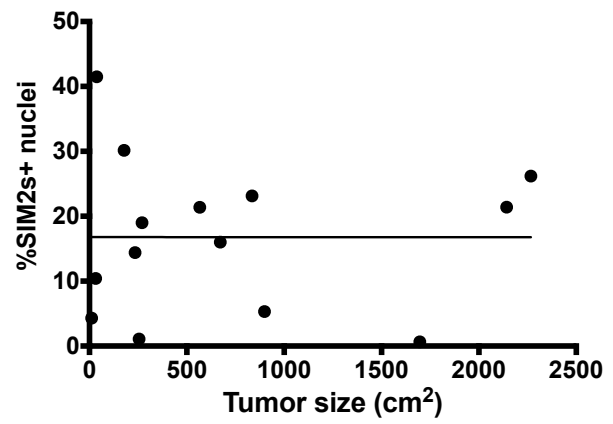


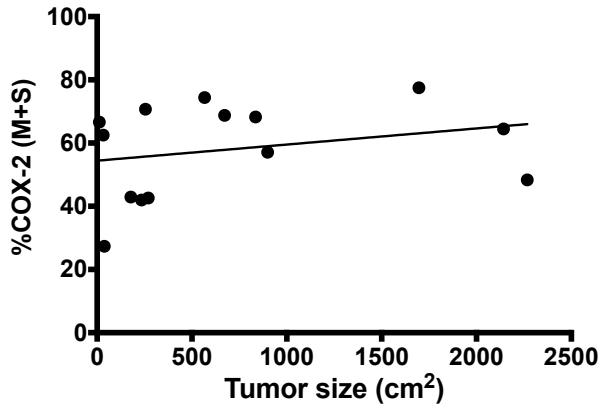
Figure S4

A SIM2 tumor size correlation
COX-2
SIM2 correlation



	X vs. Column A
Pearson r	
r	-0.663
95% confidence interval	-0.883 to -0.2043
R squared	0.4396
P value	
P (two-tailed)	0.0098
P value summary	**
Significant? (alpha = 0.05)	Yes
Number of XY Pairs	14

B COX-2 tumor size correlation



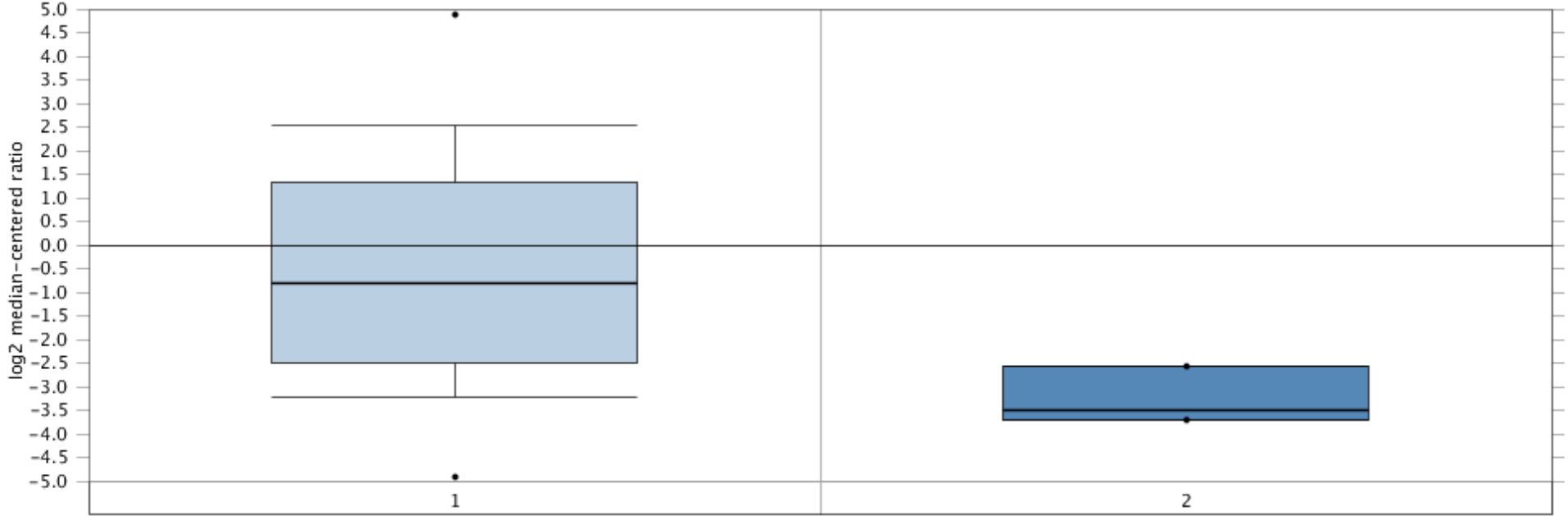
	X vs. Column A
Pearson r	
r	0.2639
95% confidence interval	-0.3101 to 0.6969
R squared	0.06967
P value	
P (two-tailed)	0.3619
P value summary	ns
Significant? (alpha = 0.05)	No
Number of XY Pairs	14

Figure S5



SIM2 Expression in TCGA Breast Breast Cancer - Metastasis

Under-expression Gene Rank: 837 (in top 5%) P-value: 0.006
Reporter: A_23_P211110 t-Test: -7.522
Fold Change: -6.614



Legend

1. Primary Site (529) 2. Metastasis (3)

TCGA Breast

No Associated Paper 2011/09/02 593 samples
mRNA 20,423 measured genes
Platform not pre-defined in Oncomine

Table S1

Target	Manufacturer	Product Number	Dilution	Application
SIM2	Millipore	AB4145	1:1000	WB
SIM2	Aviva	Aviva ARP38551_P050	1:500	WB,IHC
ActinB	Cell Signaling Technology	3700s	1:5000	WB
NFkB p65	Cell Signaling Technology	D14E12	1:1000	WB
phospho-NFkB p65	Cell Signaling Technology	93H1	1:1000	WB
IKK β	Cell Signaling Technology	D30C6	1:1000	WB
IKK α	Cell Signaling Technology	3G12	1:1000	WB
COX-2	Cayman Chemical	160112	1:400	IHC
alpha Tubulin	Abcam	ab4074	1:5000	WB
Akt (pan)	Cell Signaling Technology	4691	1:1000	WB
Phospho-Akt (Ser473)	Cell Signaling Technology	4060	1:1000	WB
GAPDH	Proteintech	60004-1-Ig	1:5000	WB
Anti-Rabbit Secondary	Cell Signaling Technology	7074	1:2000	WB
Anti-Mouse Secondary	Cell Signaling Technology	7073	1:2000	WB

Table S2

	Forward	Reverse
SIM2s	AGGTGGGTCAGGTCTGCTC	GAAGCAGAAAGAGGGCAAGTT
TBP	CGTCCCAGCAGGCAACA	GGTGCAGTTGTGAGAGTCTGTGA
GAPDH	CCAGGTGGTCTCCTCTGACTTC	GTGGTCGTTGAGGGCAATG
18s	CGGCTACCACATCCAAGGAA	CTGGAATTACCGCGGCT
PTGS2	Bio-Rad, PrimePCR	