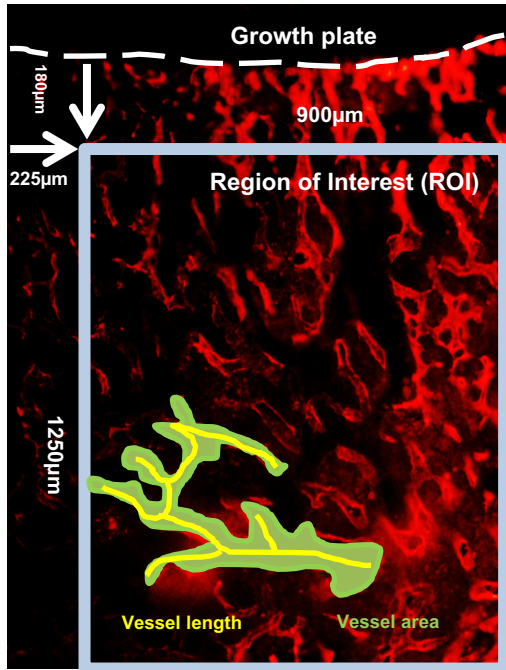


## Supplemental Figure 1

A



B



— Tissue Area

— Trabecular Bone Area

**Supplemental Figure 1. Illustration of the histological analysis.** A, Analysis of the bone marrow vasculature was performed on 30 μm thick gelatin-embedded sections of tibiae from mice that were sacrificed 5 days after 4T1-GFP tumor cell injection. Only sections without tumor cells were included in the analysis. Sections were stained with anti-Endomucin antibody and 3-4 non-serial sections per mouse were quantified. The vessel length (yellow line), vessel area (green) and number of the Endomucin-positive vessels were quantified by interactive drawing using the Osteomeasure system. B, Trabecular bone area per tissue area was quantified on 5 μm thick sections of femurs after Giemsa staining.