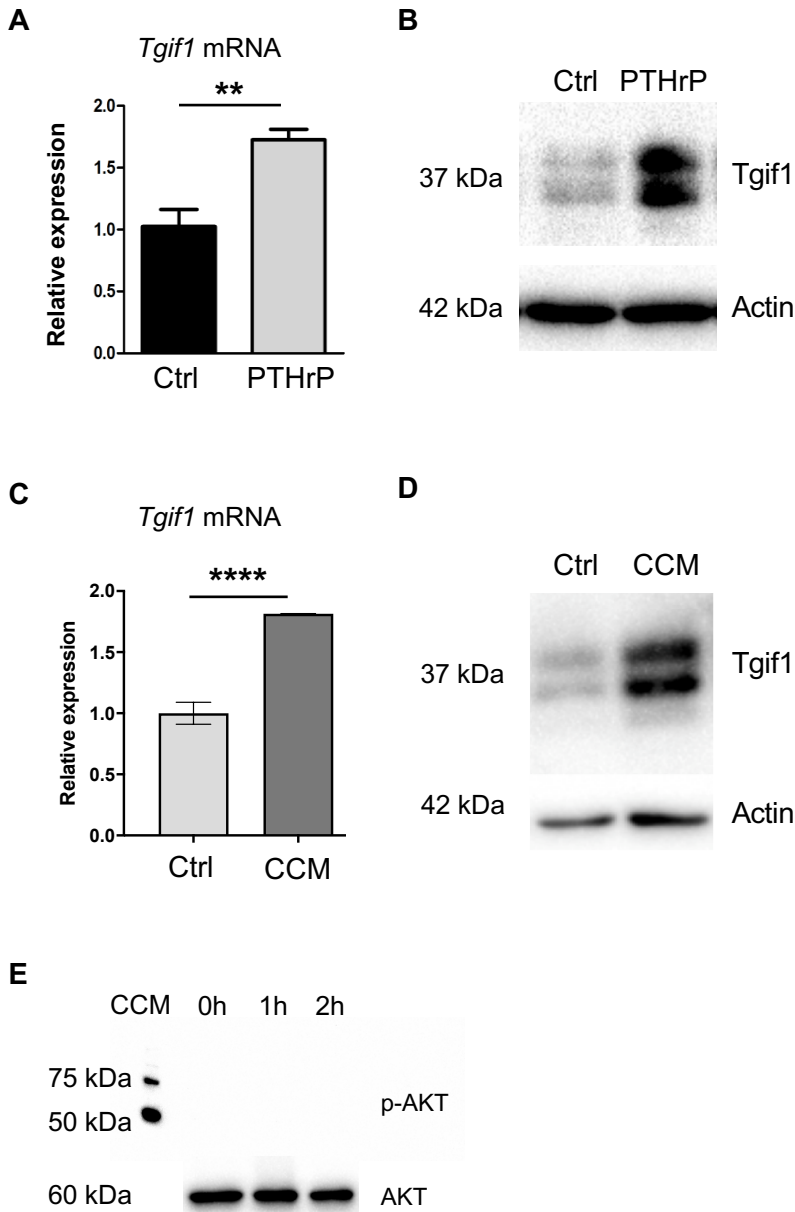


## Supplemental Figure 2



**Supplemental Figure 2. PTHrP and cancer conditioned medium increase Tgif1 expression in osteoblasts *in vitro*.** **A**, Tgif1 mRNA expression in osteoblasts upon stimulation with PTHrP compared to vehicle control (Ctrl). **B**, Immunoblot of Tgif1 protein expression in osteoblasts stimulated with PTHrP. Immunoblot of actin was used as loading control. **C**, Tgif1 mRNA expression in osteoblasts after 6 hours stimulation with control medium (Ctrl) or medium conditioned by breast cancer cells (CCM). **D**, Immunoblot of Tgif1 protein expression in osteoblasts upon stimulation with CCM. Immunoblot of actin was used as loading control. **E**, Immunoblot of phosphorylated AKT (p-AKT) and total AKT in osteoblasts upon stimulation with CCM. Data are presented as mean±SEM. Two-tailed Student's t-test was used to compare two groups, \*\*<0.01, \*\*\*\*<0.0001.