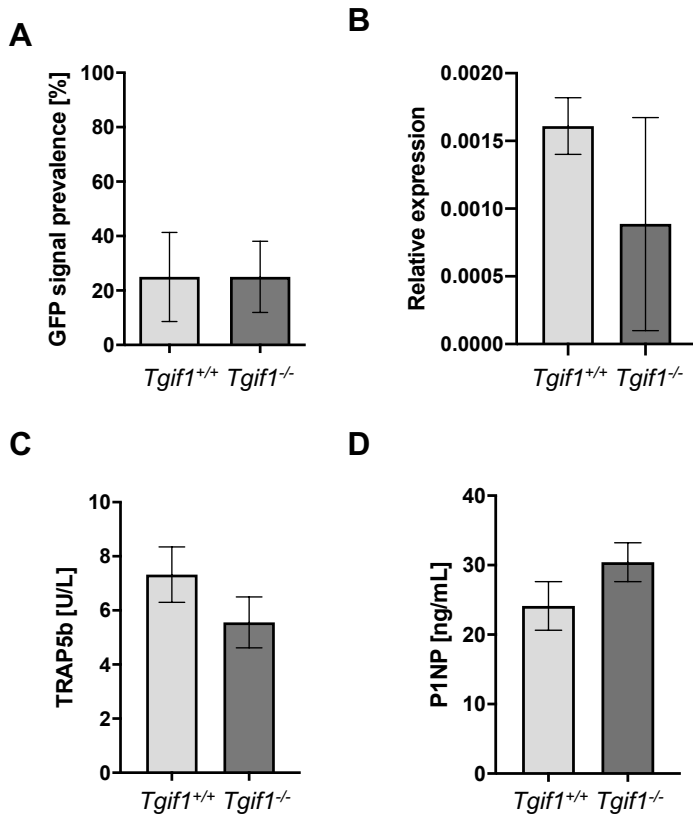


Supplemental Figure 3



Supplemental Figure 3. Analysis of tumor cell distribution and bone turnover markers in cancer-bearing mice. **A**, Presence of breast cancer cells in the lungs of *Tgif1*^{+/+} and *Tgif1*^{-/-} mice 5 days after intracardiac injection of 4T1-GFP cells. **B**, GFP mRNA expression in the lungs of *Tgif1*^{+/+} and *Tgif1*^{-/-} mice (n=2-3/group). GFP expression was normalized to the expression of the house keeping gene B2M. **C** and **D**, Serum concentration of TRAP5b and P1NP in *Tgif1*^{+/+} and *Tgif1*^{-/-} (n=6-8 mice/group). Data are presented as mean±SEM. Two-tailed Student's t-test was used to compare two groups.