

Supplemental Figure Legends

Supplemental Figure 1- EDCs utilized in these studies display estrogenic activity.

Specific lots of each EDC used in these studies were tested for estrogenic activity by reporter assay. Luciferase activity was measured after 24 hours with either 1 nM, 10 nM, 100 nM, or 1 μ M of E2, BPA, BPS, or DES. The data is graphed as mean \pm SD. Data represents three technical replicates. * represents $p < 0.05$ and *** represents $p < 0.0001$.

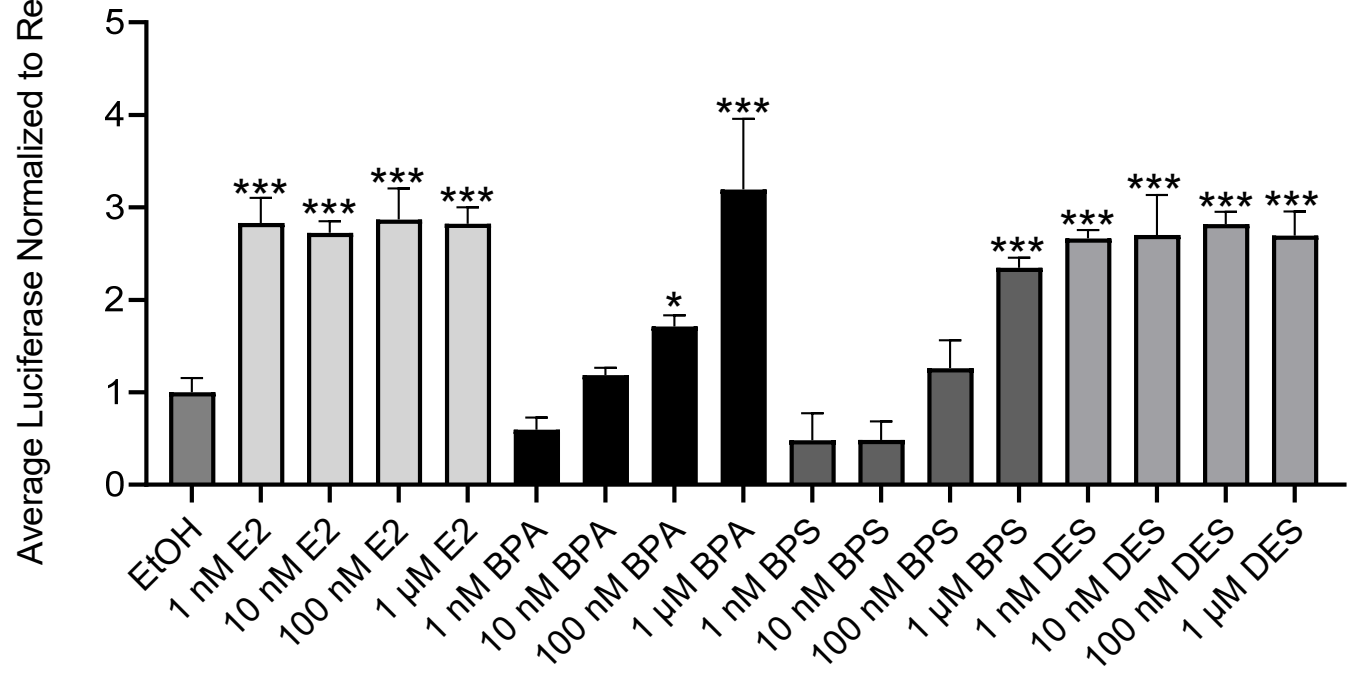
Supplemental Figure 2- BPA does not alter the relative proportions of fibroblast subpopulations.

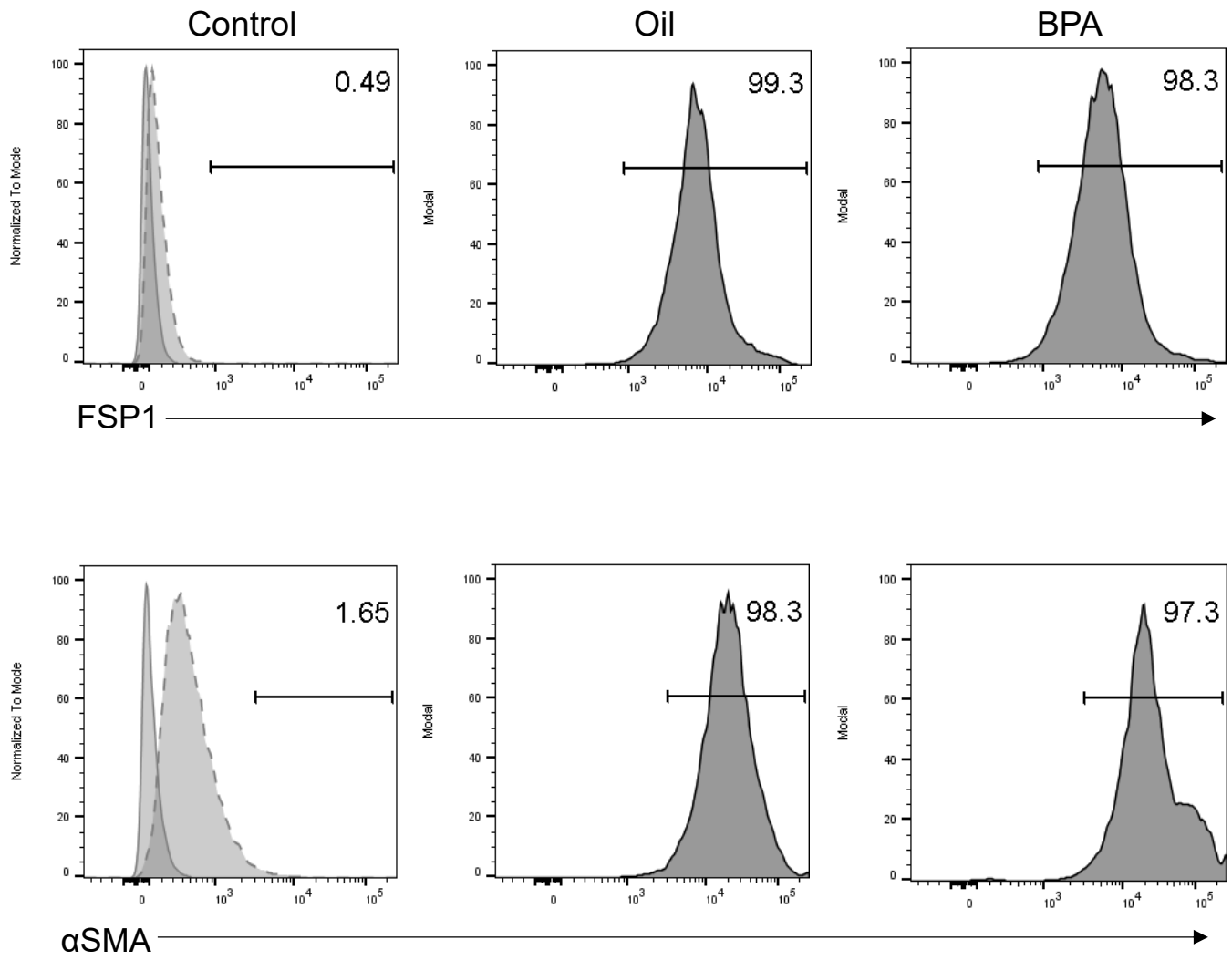
A. Enrichment of the fibroblasts isolated for these studies was validated by flow cytometry using antibodies labeling the expression of FSP1 and α SMA. Greater than 97% of cells stain positive for FSP1 and α SMA. **B.** Fibroblasts isolated from mammary glands were subjected to flow cytometry using antibodies to detect markers of specific fibroblast subpopulations. Percent positivity of cells for each marker is indicated for each sample in the figure, with the control samples displaying background percent. Data represents 1 biological replicate.

Supplemental Figure 3- Increased collagen deposition in BPA exposed mammary glands in adult female mice.

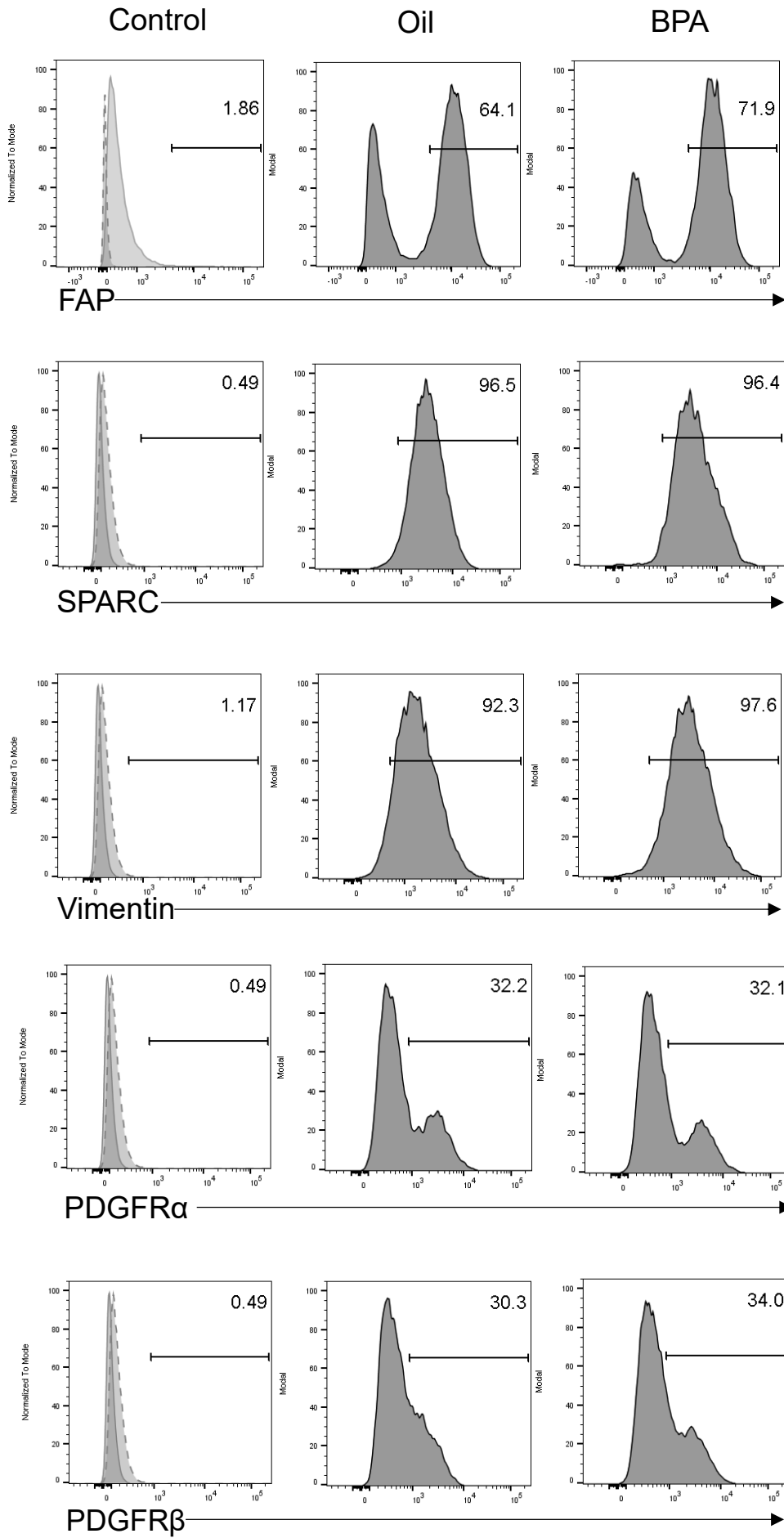
Data represent magnified images of picosirius red staining under brightfield light from Figure 3 from 4 week old mice (**A**) and 12 week old mice (**B**) exposed to BPA or oil *in utero*.

A



A

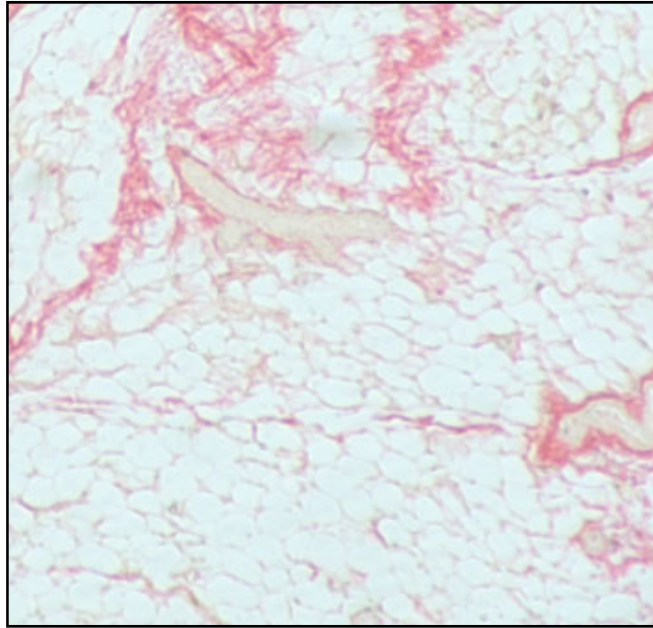
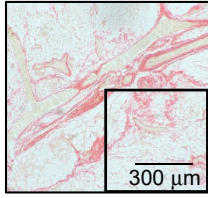
B



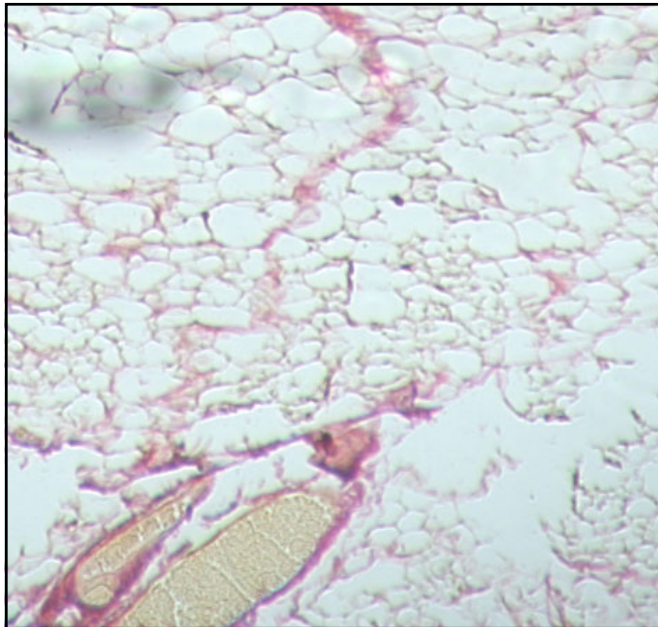
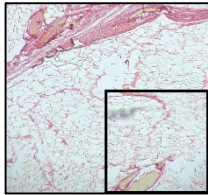
A

4 week

Oil



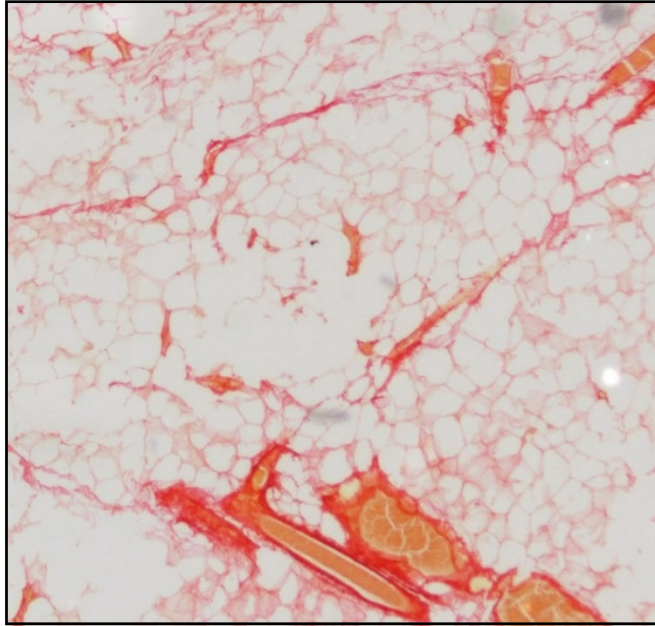
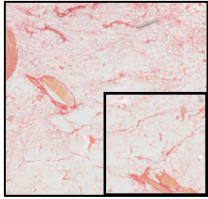
BPA



B

12 week

Oil



BPA

