

1

Supplementary Figures

2

3

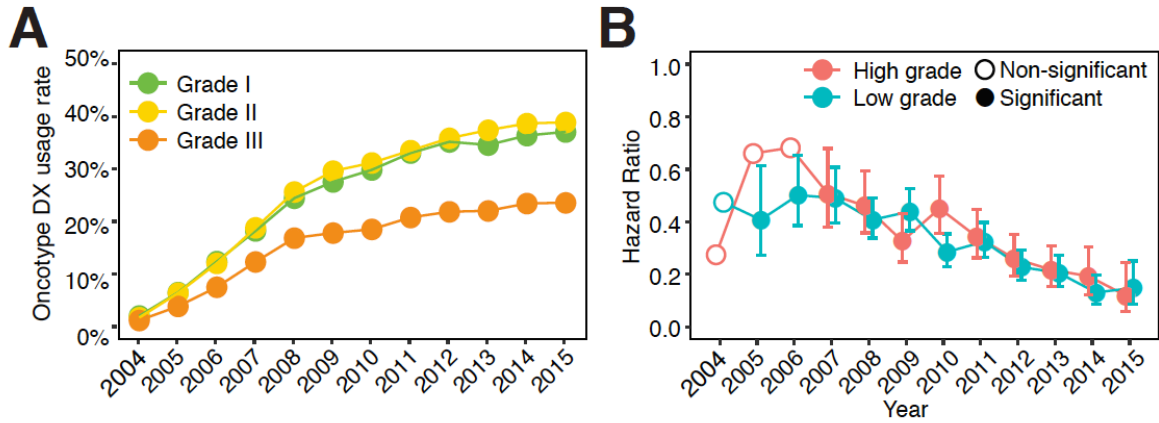
Impact of Oncotype DX testing on ER-positive breast cancer treatment and survival in the first

4

decade of use

5

Evelien Schaafsma, Baoyi Zhang, Merit Schaafsma, Chun-Yip Tong, Lanjing Zhang, Chao Cheng



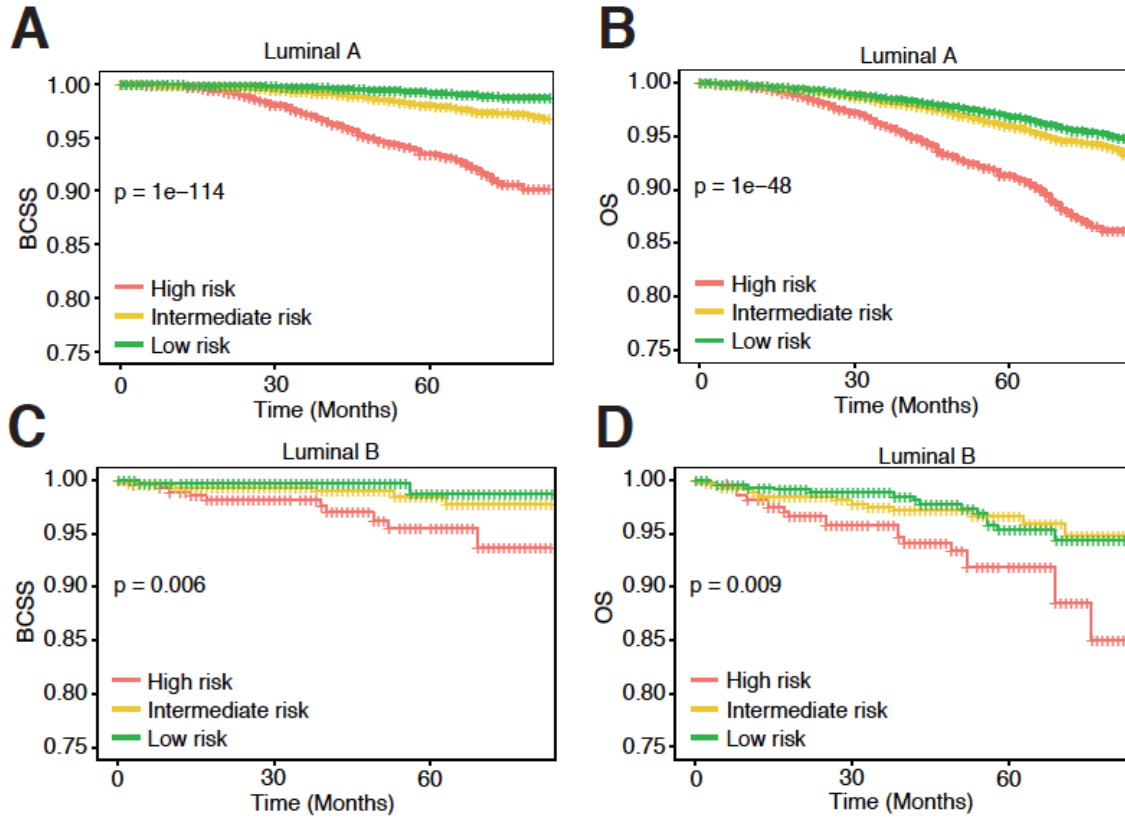
6

7 **Suppl. Figure 1. Oncotype DX usage rates and hazard ratios stratified by grade. A.** Oncotype DX

8 usage rate among the three breast cancer grades. Usage rates were calculated based on the total number of

9 patients within each indicated grade group. **B.** Hazard ratios of Oncotype DX usage stratified by tumor

10 grade between 2004 and 2015 from univariate Cox regression models.



11

12 **Suppl. Figure 2. Oncotype DX score is predictive of patient's survival in Luminal A and Luminal B**

13 **breast cancer. A.** Survival plot of 3 risk groups classified by Oncotype DX (BCSS) in Luminal A breast

14 cancer. **B.** Survival plot of 3 risk groups classified by Oncotype DX (OS) in Luminal A breast cancer. **C.**

15 Survival plot of 3 risk groups classified by Oncotype DX (BCSS) in Luminal B breast cancer. **D.** Survival

16 plot of 3 risk groups classified by Oncotype DX (OS) in Luminal B breast cancer.