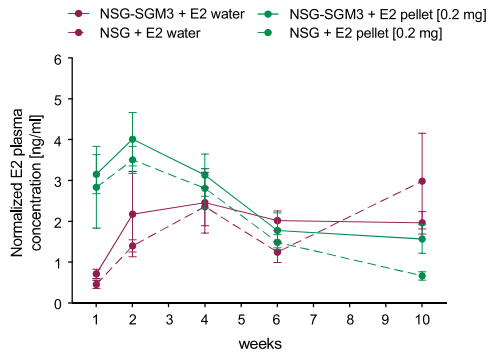
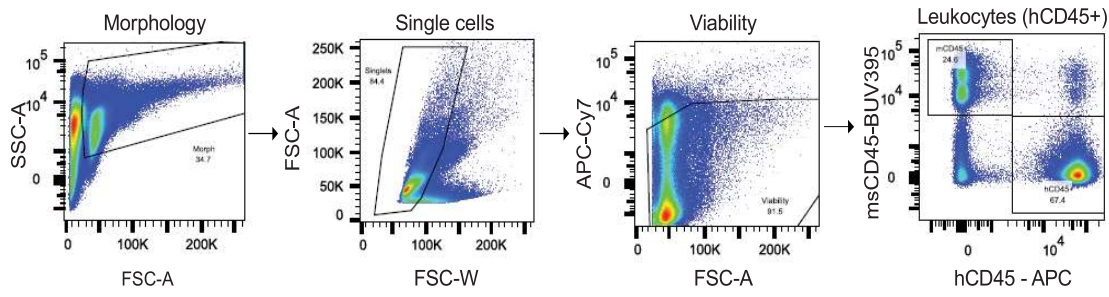


Suppl. Fig. 1

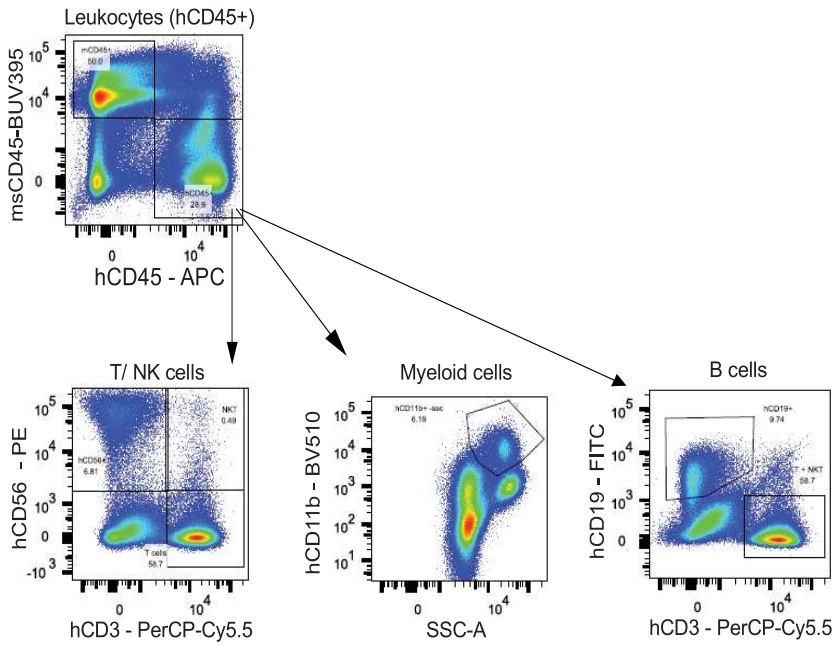


Suppl. Fig. 2

a



b



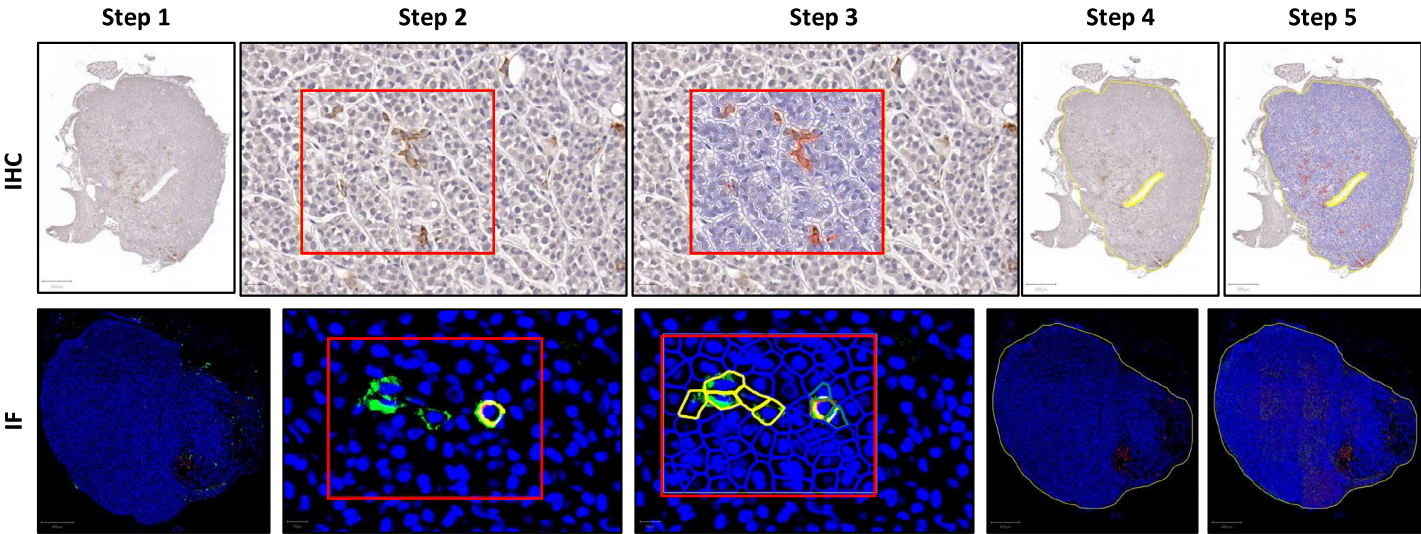
Suppl. Fig. 3

ANTIBODY	METHOD	AR	DILUTION	INCUBATION	VENDOR, CATALOG NUMBER
Anti-Cytokeratin, clone CAM5.2	IHC	Trypsin	Neat	1h; RT	BD Biosciences, #349205
Cleaved Caspase 3 (Asp175), clone 5A1E	IHC	pH 6	1/150	1h; RT	Cell Signaling Technology, #9664
CD3, clone LN10	IHC	pH 9 (T)	1/250	1h; 37C	Leica Biosystems, #NCL-L-CD3-565
CD20cy, clone L26	IHC	pH 6	1/200	45', RT	Agilent Technologies, #M0755
CD31 (PECAM-1), clone D8V9E	IHC	pH 6	1/70	1h; RT	Cell Signaling Technology, #77699
CD45, clone PD7/26 + 2B11	IHC; IF	pH 6	1/50	1h; RT	Agilent Technologies, #M0701
CD56 (NCAM), clone CD564	IHC	pH 10 (T)	1/50	1h; RT	Leica, #NCL-L-CD56-504
ERa, clone SP1	IHC	pH 9 (T)	1/35	1h; RT	Thermo Fisher, #MA139540
Itgam/CD11b, clone D6X1N	IHC; IF	pH 6	1/50	1h; RT	Cell Signaling Technology, #49420
Phospho Histone H3 (Ser10)	IHC	pH 6	1/150	1h; RT	Cell Signaling Technology, #9701
EnVision+ Single Reagents (HRP. Mouse)	IHC	-	Ready-to-use	30 min; RT	Agilent Technologies, #K4001
EnVision+ Single Reagents (HRP. Rabbit)	IHC	-	Ready-to-use	30 min; RT	Agilent Technologies, #K4003
Biotinylated IgG Secondary Antibody, Anti-Rb	IHC; IF	-	1/250	30 min; RT	Vector Labs, #BA-9200
Biotinylated IgG Secondary Antibody, Anti-Ms	IHC; IF	-	1/200	30 min; RT	Vector Labs, #BA-1000
Goat anti-Rb IgG (H+L) Highly Cross-Adsorbed Secondary Antibody, Alexa Fluor 555	IF	-	1/500	30 min; RT	Thermo Fisher, #A-21429

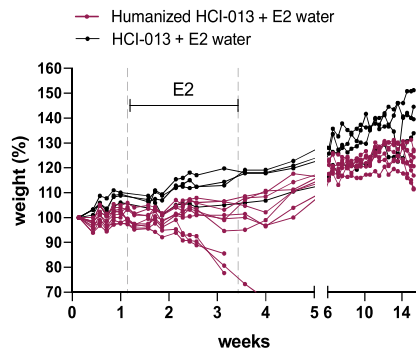
AR = Antigen Retrieval; IF = Immunofluorescence; IHC = Immunohistochemistry; Ms = Mouse; ON = overnight; pH 6 = Sodium Citrate Buffer; pH 9 = Tris-EDTA Buffer; pH 10 = Tris Buffer; Rb = Rabbit; RT = room temperature; T = Tween 20 (0.05%)

Suppl. Fig. 4

QuPath quantification



Suppl. Fig. 5



Suppl. Fig. 6

