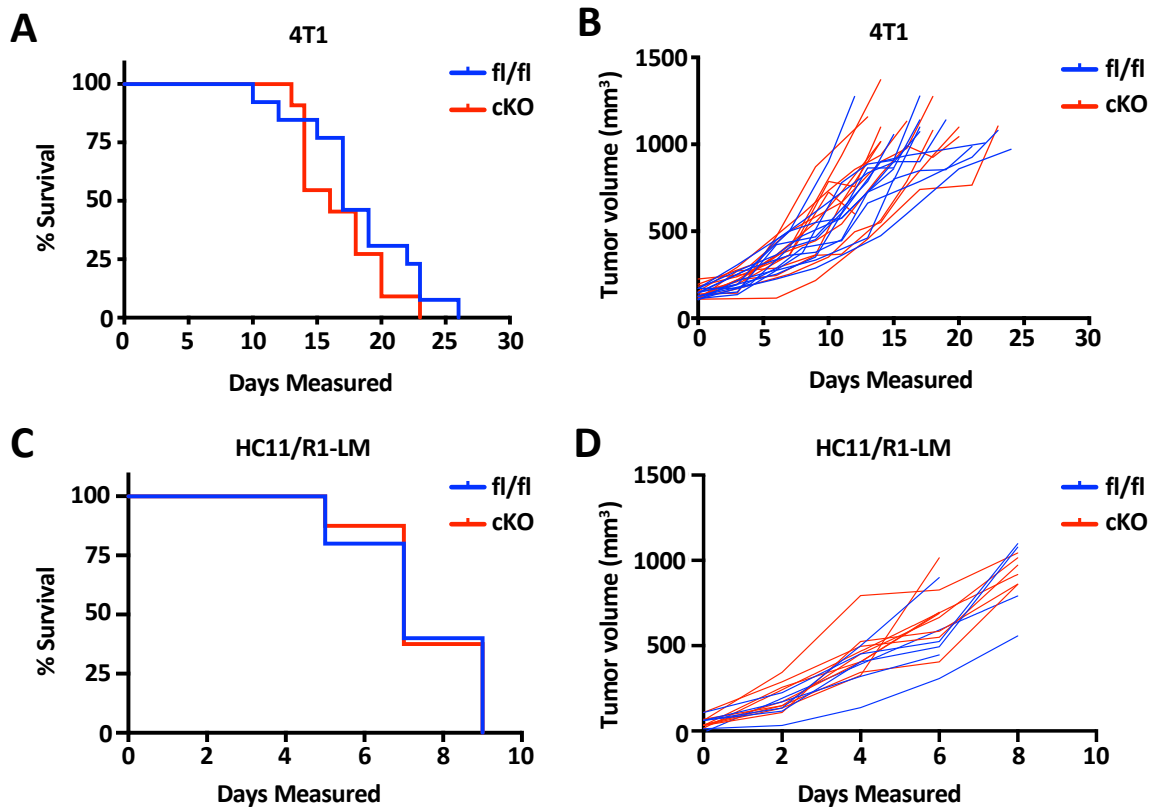


Supplemental Figure 1. Tumor weight at size endpoint does not differ between $STAT5^{fl/fl}$ and $STAT5^{cKO}$ mice. A Tumor weights of 4T1 tumors and **B** HC11/R1-LM tumors transplanted into $STAT5^{fl/fl}$ (n = 5-13) or $STAT5^{cKO}$ (n = 8-11) mice. % Survival on Y-axes indicates proportion of mice reaching tumor size endpoint of 1cm³, not disease-related death.



Supplemental Figure 2. Deletion of STAT5 in myeloid cells does not impact overall tumor growth rate. A Kaplan–Meier curves of 4T1 or **C** HC11/R1-LM tumors transplanted into STAT5^{fl/fl} (n = 5-13) or STAT5^{cKO} (n = 8-11) mice. % Survival on Y-axes indicates proportion of mice reaching tumor size endpoint of 1cm³ (Day 0 = palpable tumor), not disease-related death. **B** Individual tumor growth rates from 4T1 and **D** HC11/R1-LM tumor-bearing mice (Day 0 = palpable tumor).