

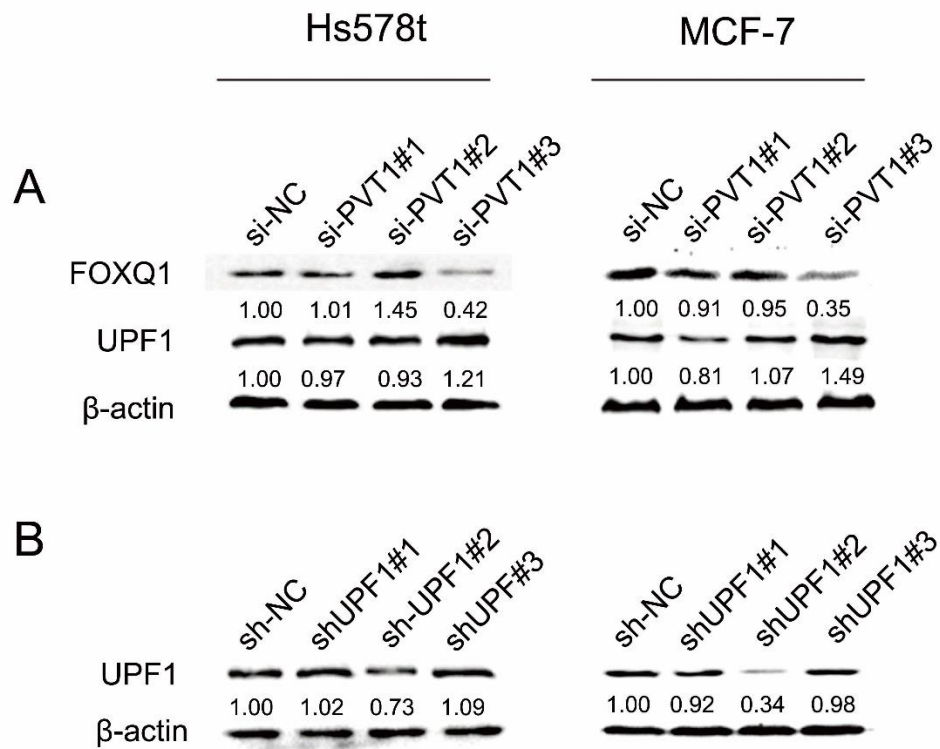
Additional file 1

Additional table:

Additional table: Association between PVT1 expression and the subtypes of breast cancer patients (all female)

| Characteristics | Case (n=80) | Expression of PVT1 | | P value |
|-----------------|-------------|--------------------|-------------|---------|
| | | Low (n=40) | High (n=40) | |
| subtype | | | | |
| Luminal A | 29 | 17 | 12 | 1.000 |
| Luminal B | 19 | 8 | 11 | |
| Her-2+ | 17 | 8 | 9 | |
| Basal-like | 15 | 7 | 8 | |

Additional figure:



Additional figure: si-PVT1 and sh-UPF1 knockdown efficiency in Hs578t and MCF-7 cells

(A) Western blot assays for FOXQ1 and UPF1 in Hs578t and MCF-7 cells. (B) Western blot assays for UPF1 in Hs578t and MCF-7 cells.