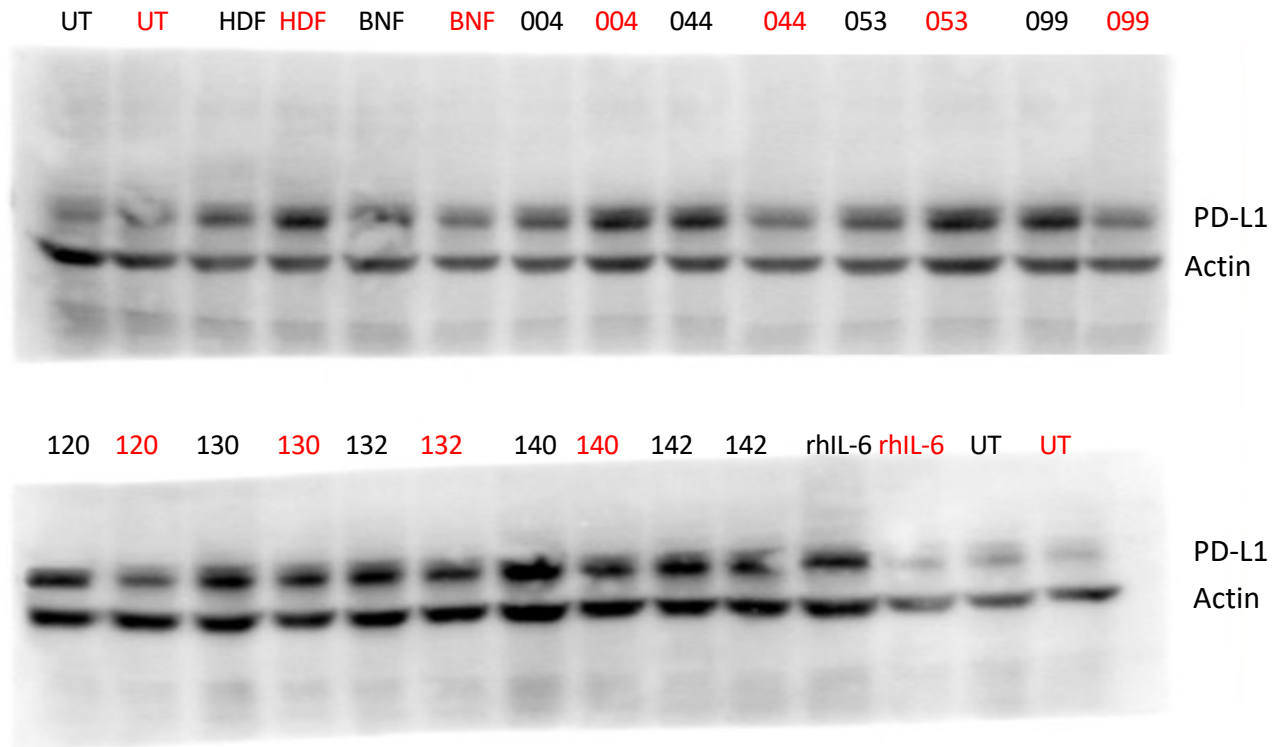


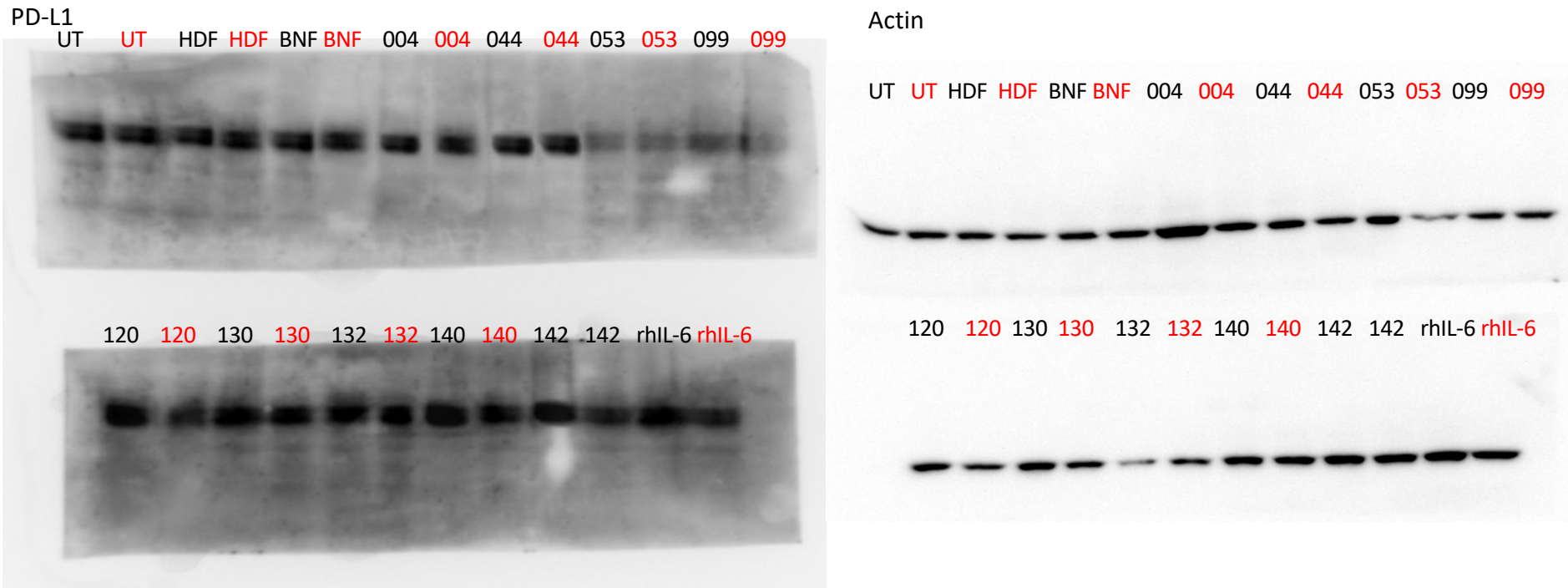
Western blot gel  
(Full unedited gel)

Fig 2C: Scramble and **IL-6R knock down** MDA-MB-231 cell after treating with CAF-CM to detect PD-L1 expression



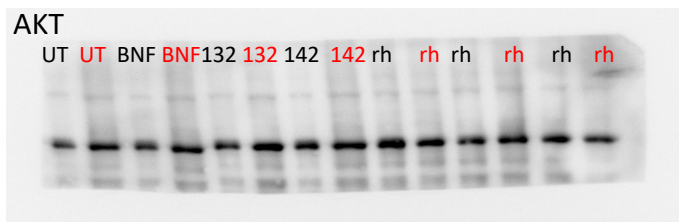
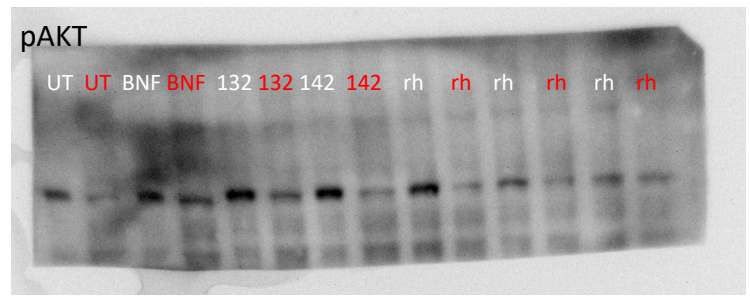
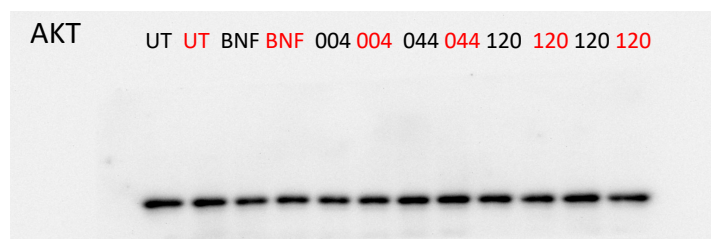
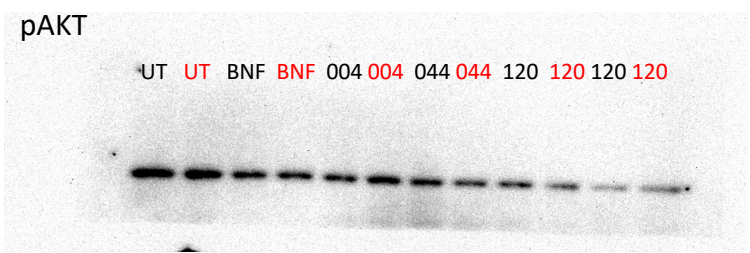
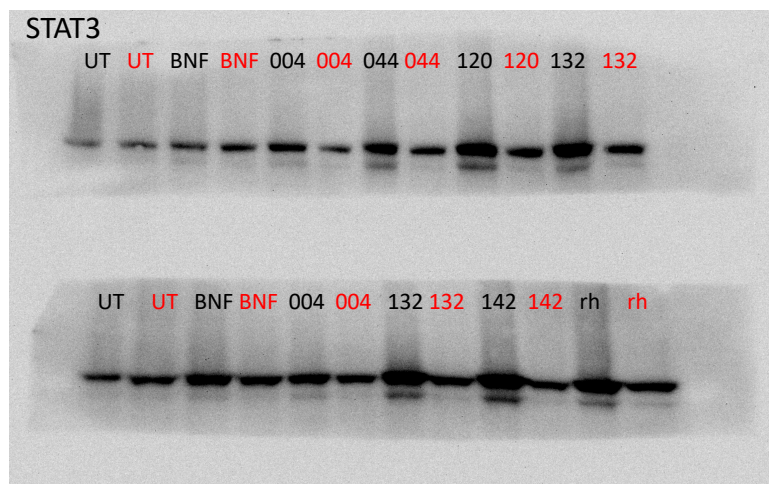
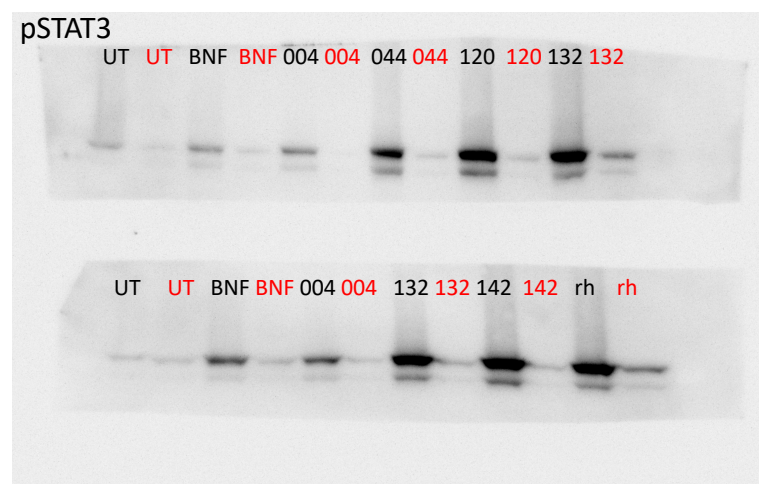
Black font= scramble cell// Red font= IL-6R knock down (KD) cell

# Fig 2D: Scramble and IL-6R knock down HCC70 cell after treating with CAF-CM to detect PD-L1 expression



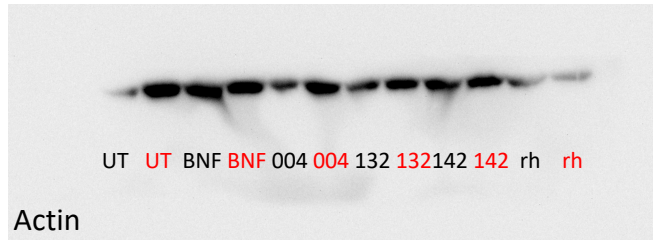
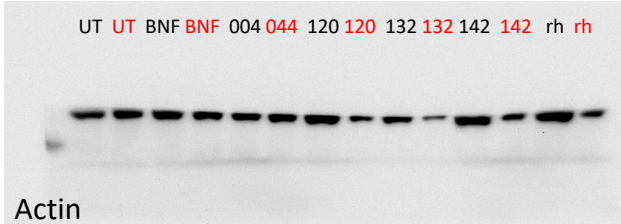
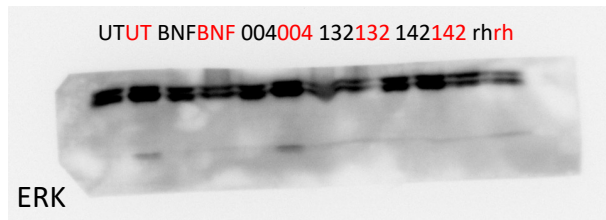
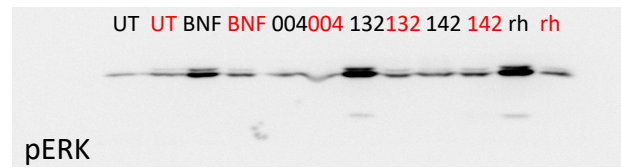
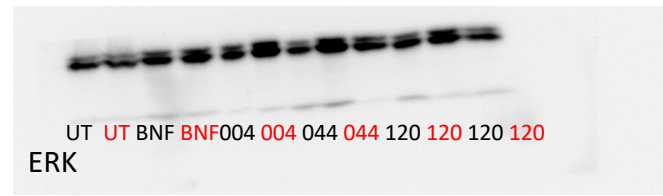
Black font= scramble cell// Red font= IL-6R knock down (KD) cell

# Fig 4A: Scramble and IL-6R knock down MDA-MB-231 cell after treating with CAF-CM to detect signaling molecules



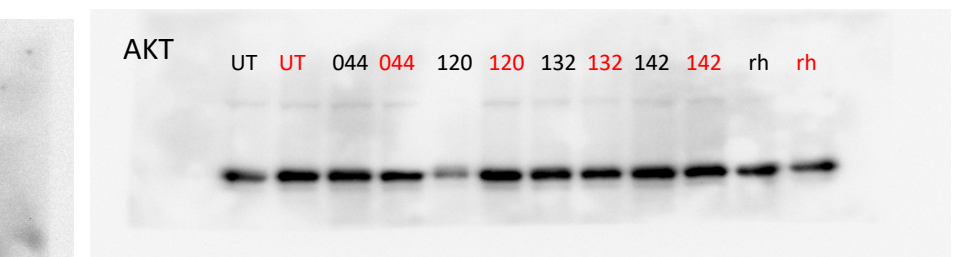
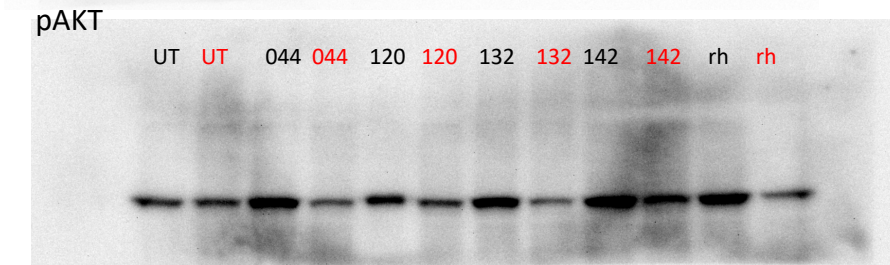
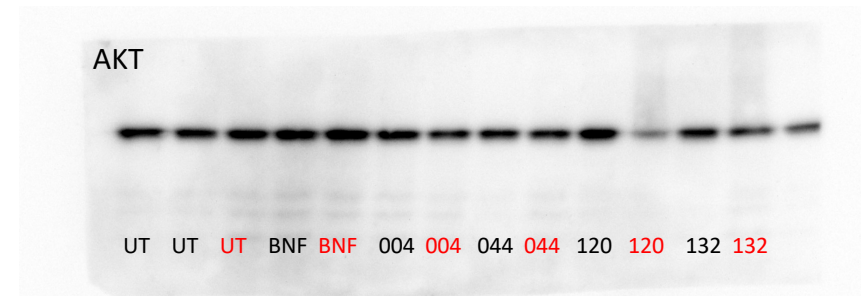
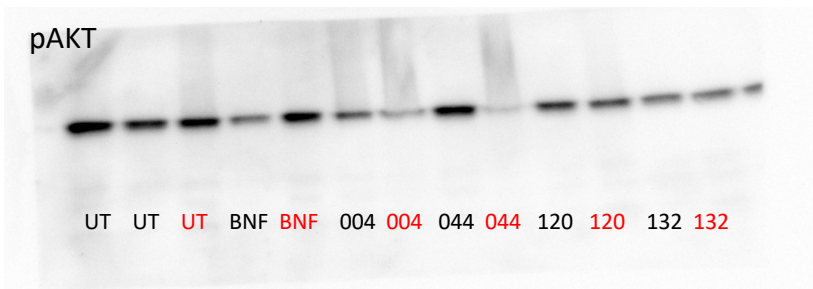
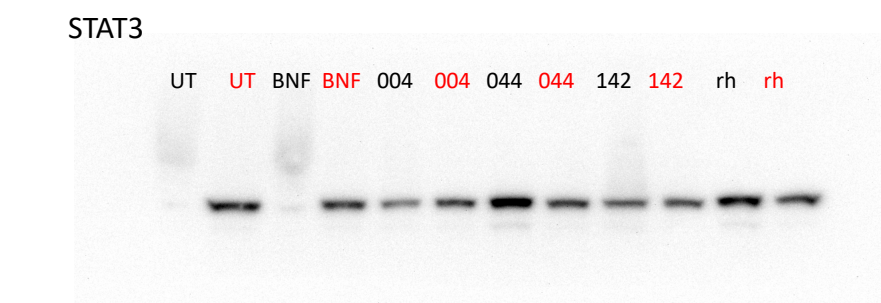
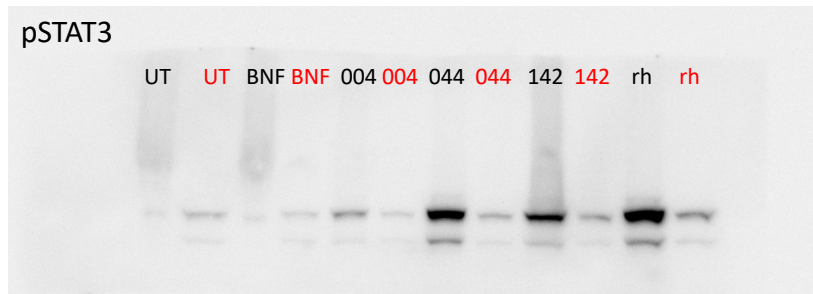
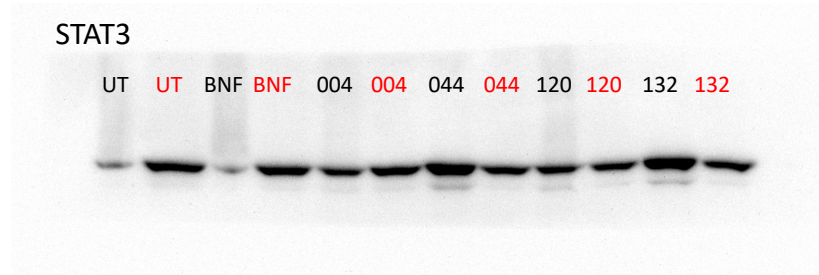
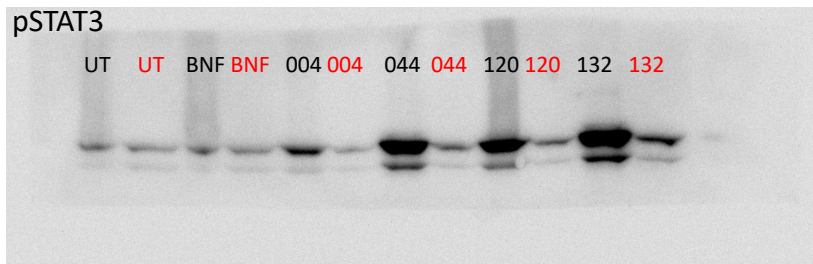
Black font= scramble cell// Red font= IL-6R knock down (KD) cell

# Fig 4A: Scramble and IL-6R knock down MDA-MB-231 cell after treating with CAF-CM to detect signaling molecules



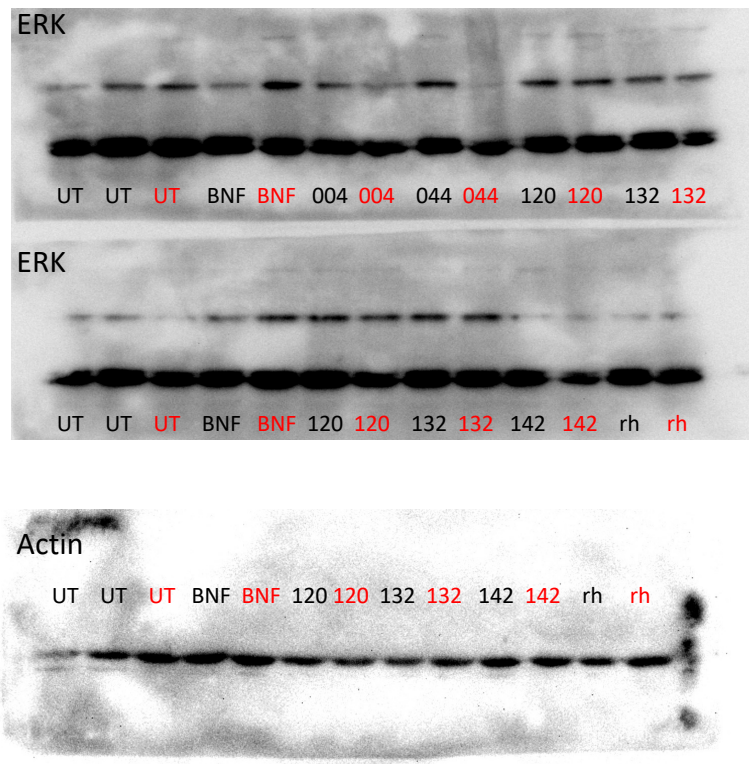
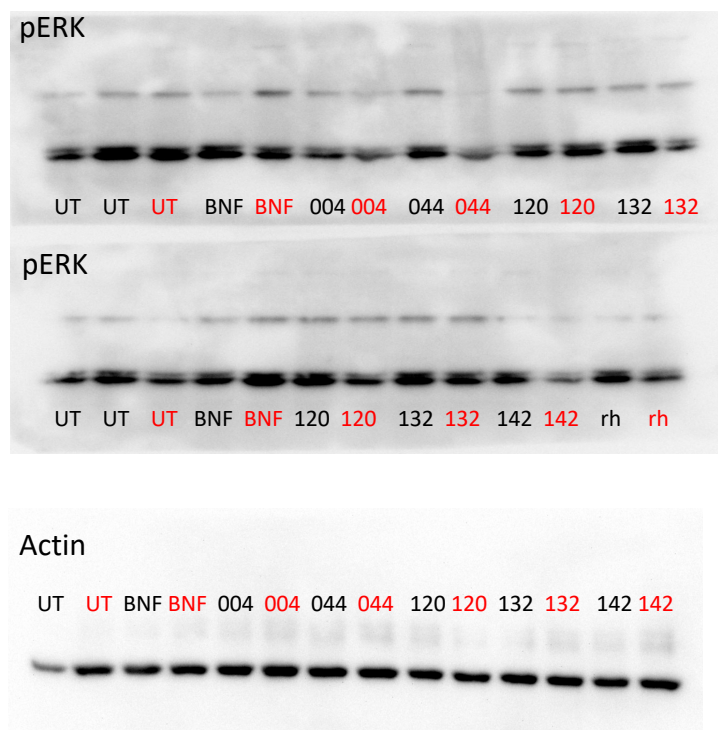
Black font= scramble cell// Red font= IL-6R knock down (KD) cell

# Fig 4B: Scramble and IL-6R knock down HCC70 cell after treating with CAF-CM to detect signaling molecules



Black font= scramble cell// Red font= IL-6R knock down (KD) cell

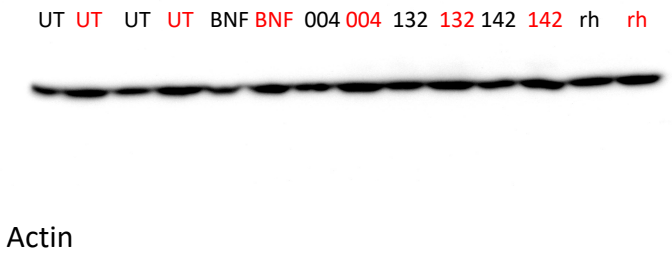
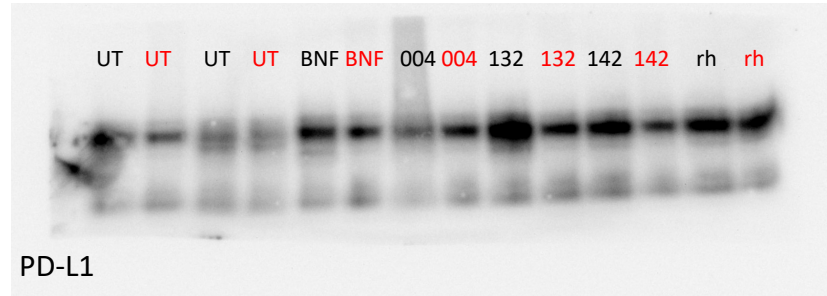
# Fig 4B: Scramble and IL-6R knock down HCC70 cell after treating with CAF-CM to detect signaling molecules



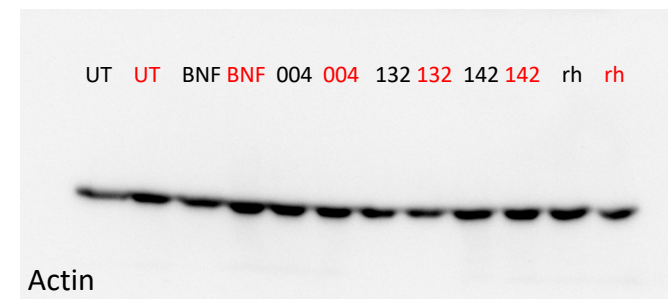
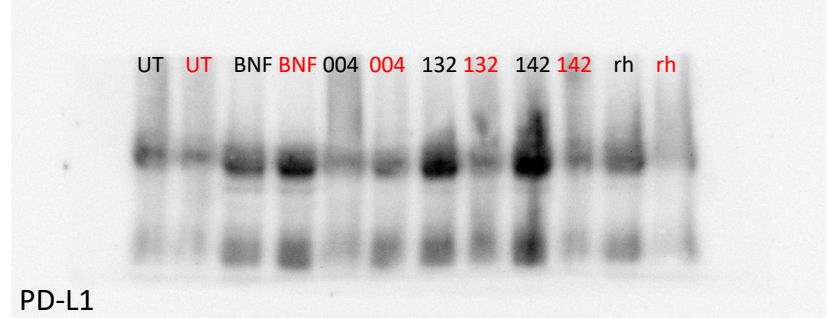
Black font= scramble cell// Red font= IL-6R knock down (KD) cell

# Fig 4C: Scramble MDA-MB-231 cell after treating with CAF-CM and specific inhibitors to detect PD-L1 expression

## STAT3 inhibitor



## AKT inhibitor

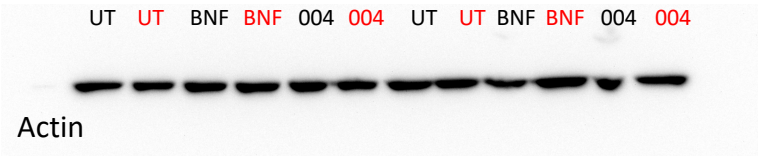
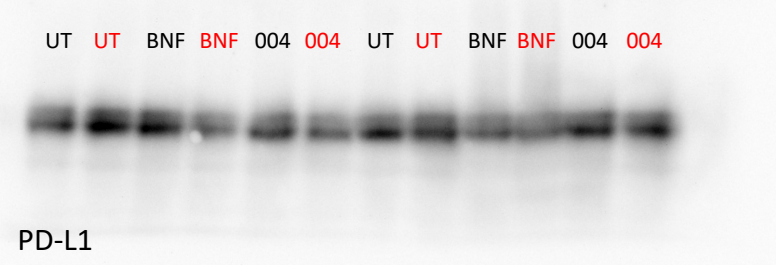


Black font= without inhibitor// Red font= with inhibitor

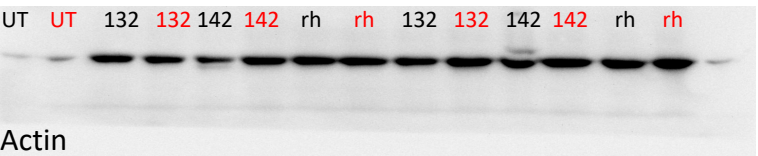
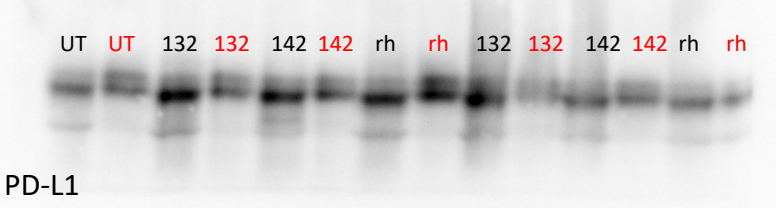


# Fig 4D: Scramble HCC70 cell after treating with CAF-CM and specific inhibitors to detect PD-L1 expression

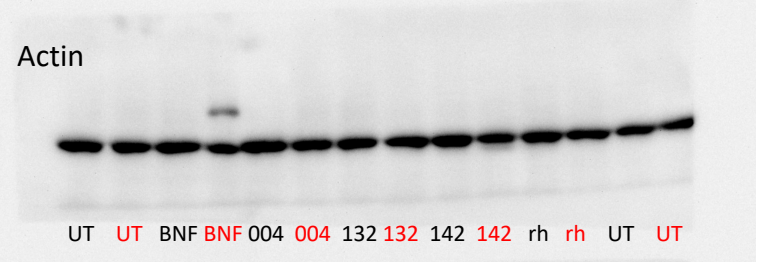
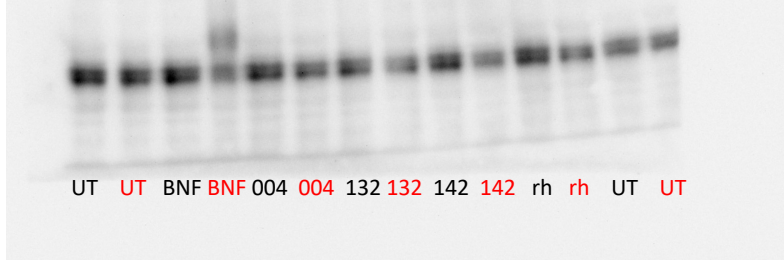
## STAT3 inhibitor



## STAT3 inhibitor



## AKT inhibitor



Black font= without inhibitor// Red font= with inhibitor