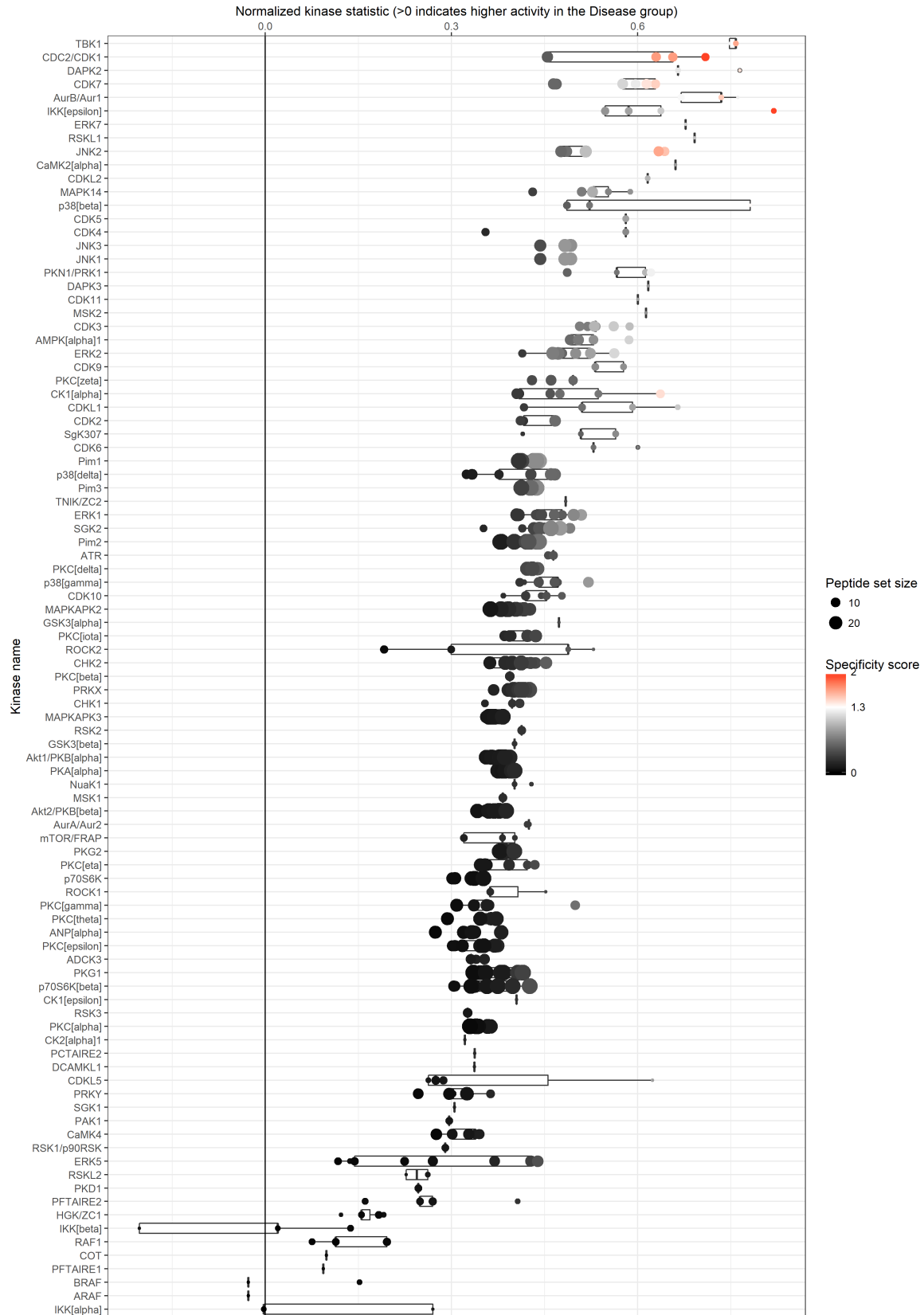


Supplementary Figure 7

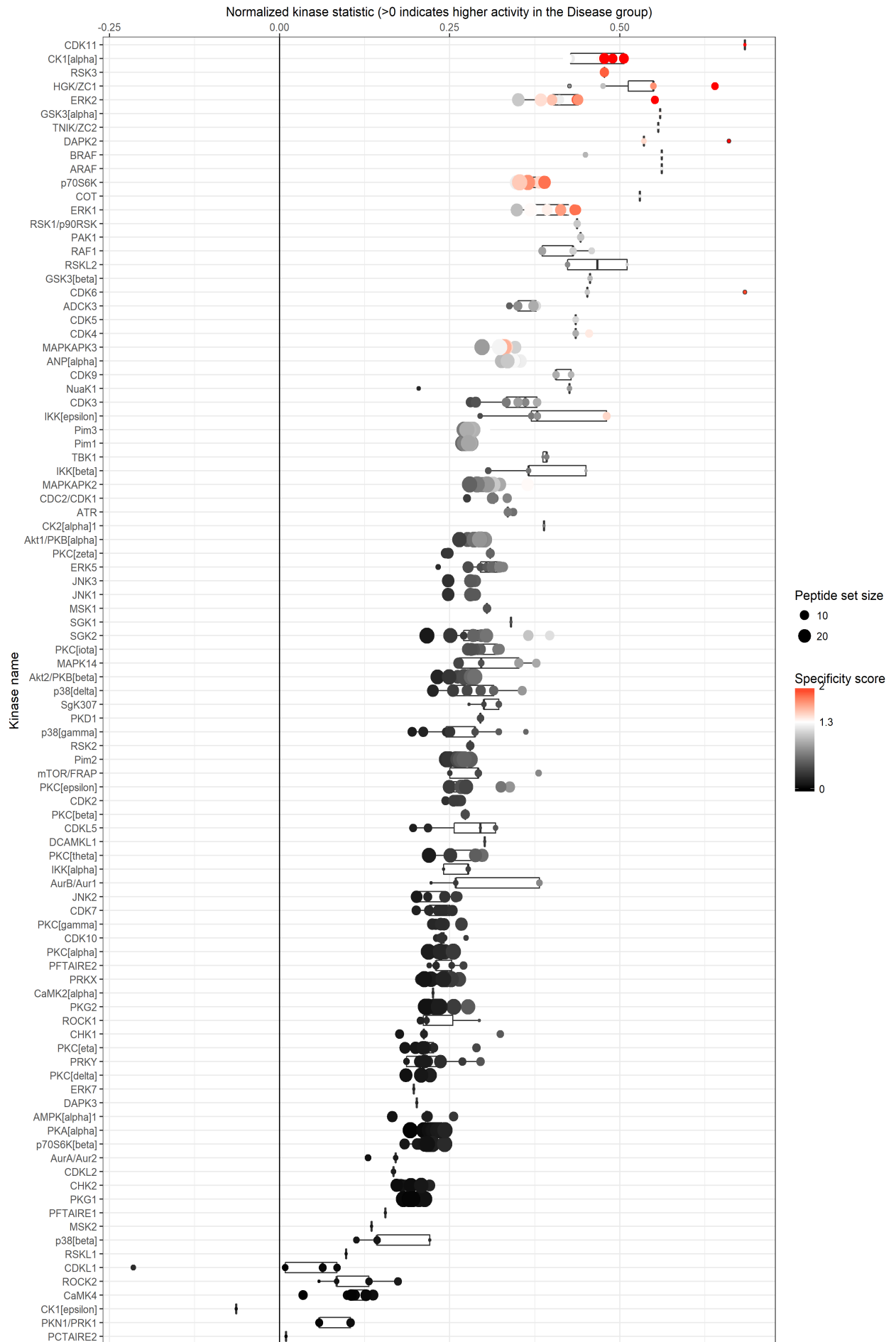
Upstream Kinase Analysis (UKA) generated list of putative kinases based on peptides targeted for phosphorylation in patients with different breast cancer subtypes.

Serine Threonine kinase (STK)

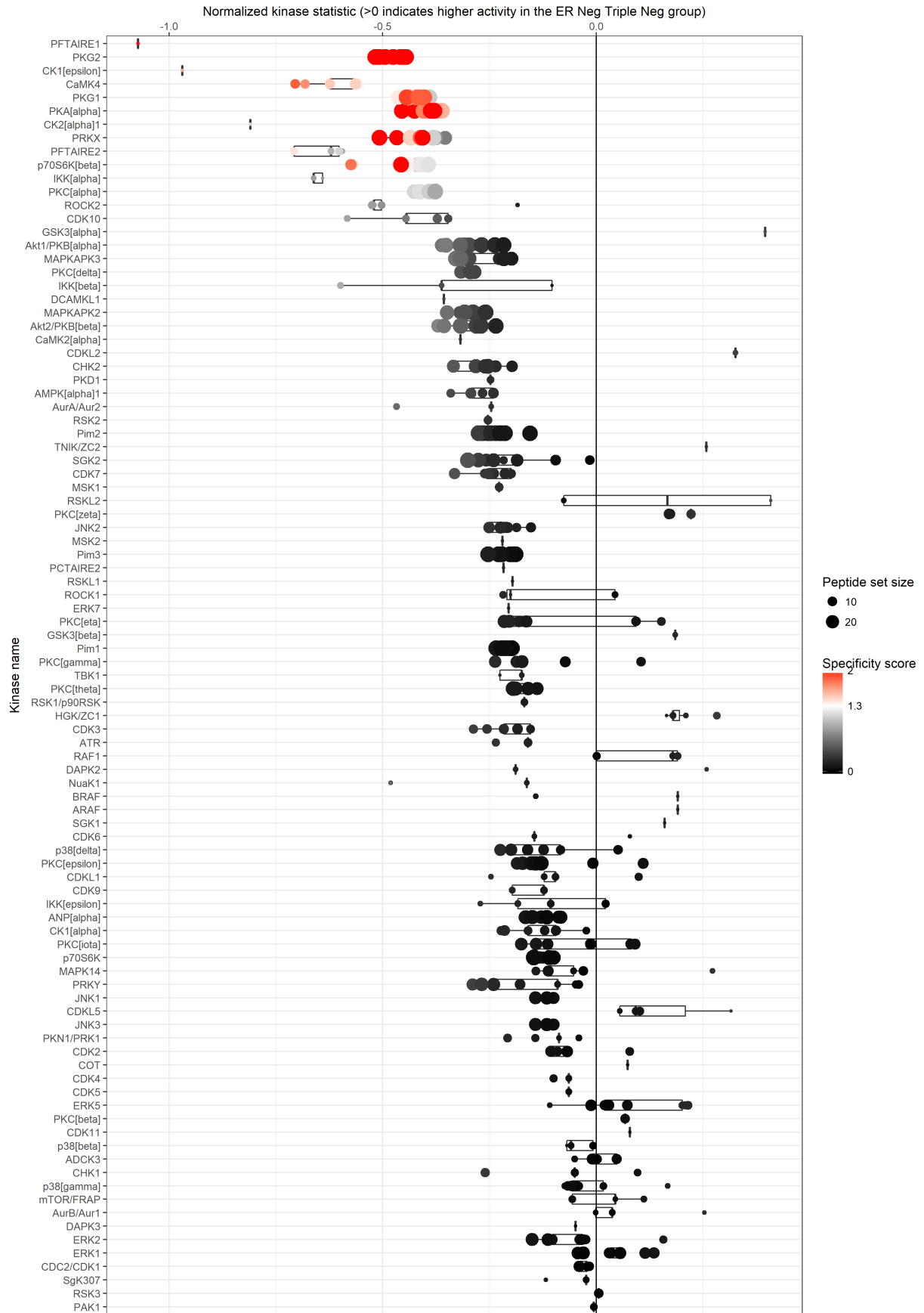
HR-pos HER2 neg pts Vs HVs



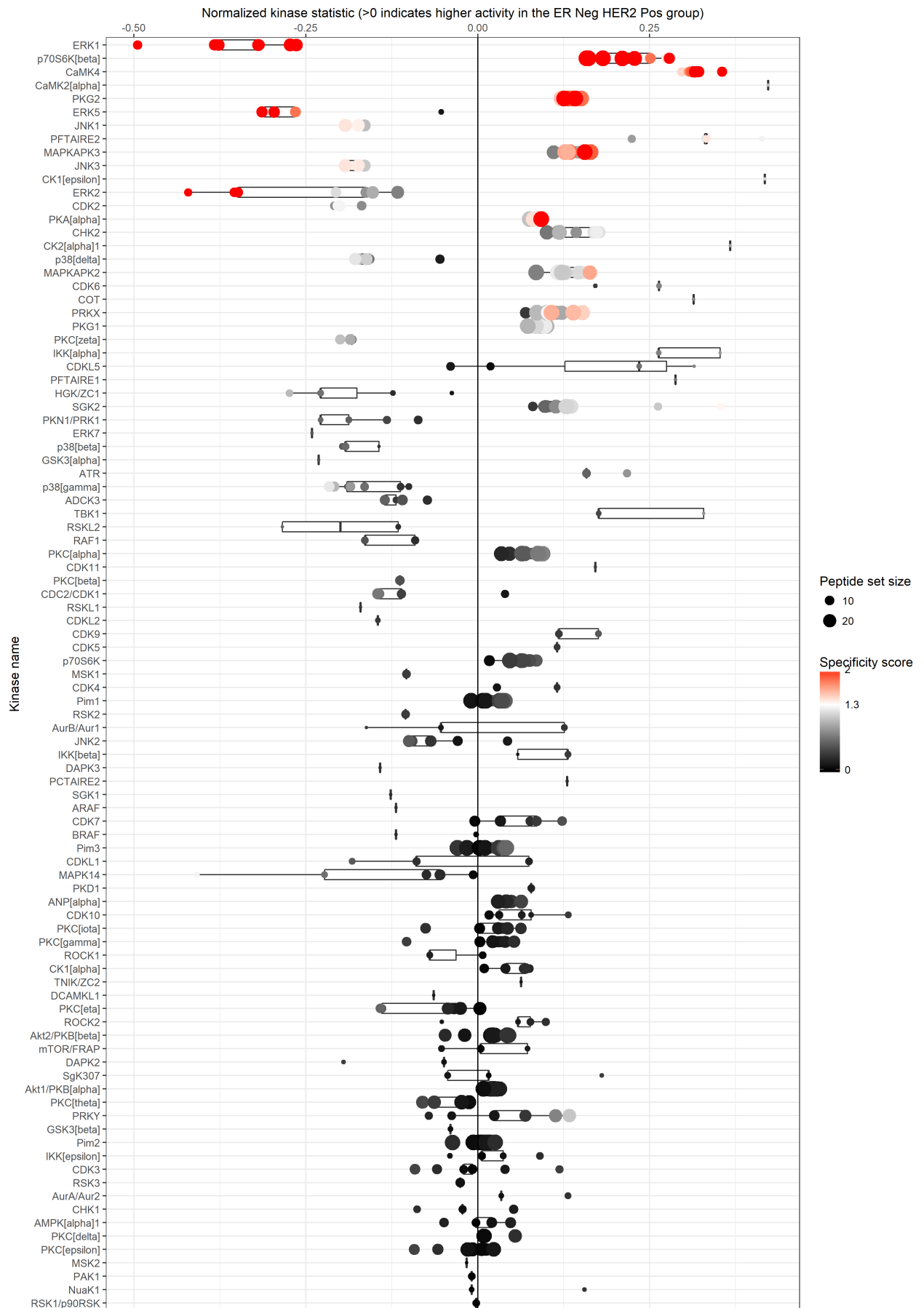
HR-pos HER2 pos pts Vs HVs



Triple negative pts Vs HVs

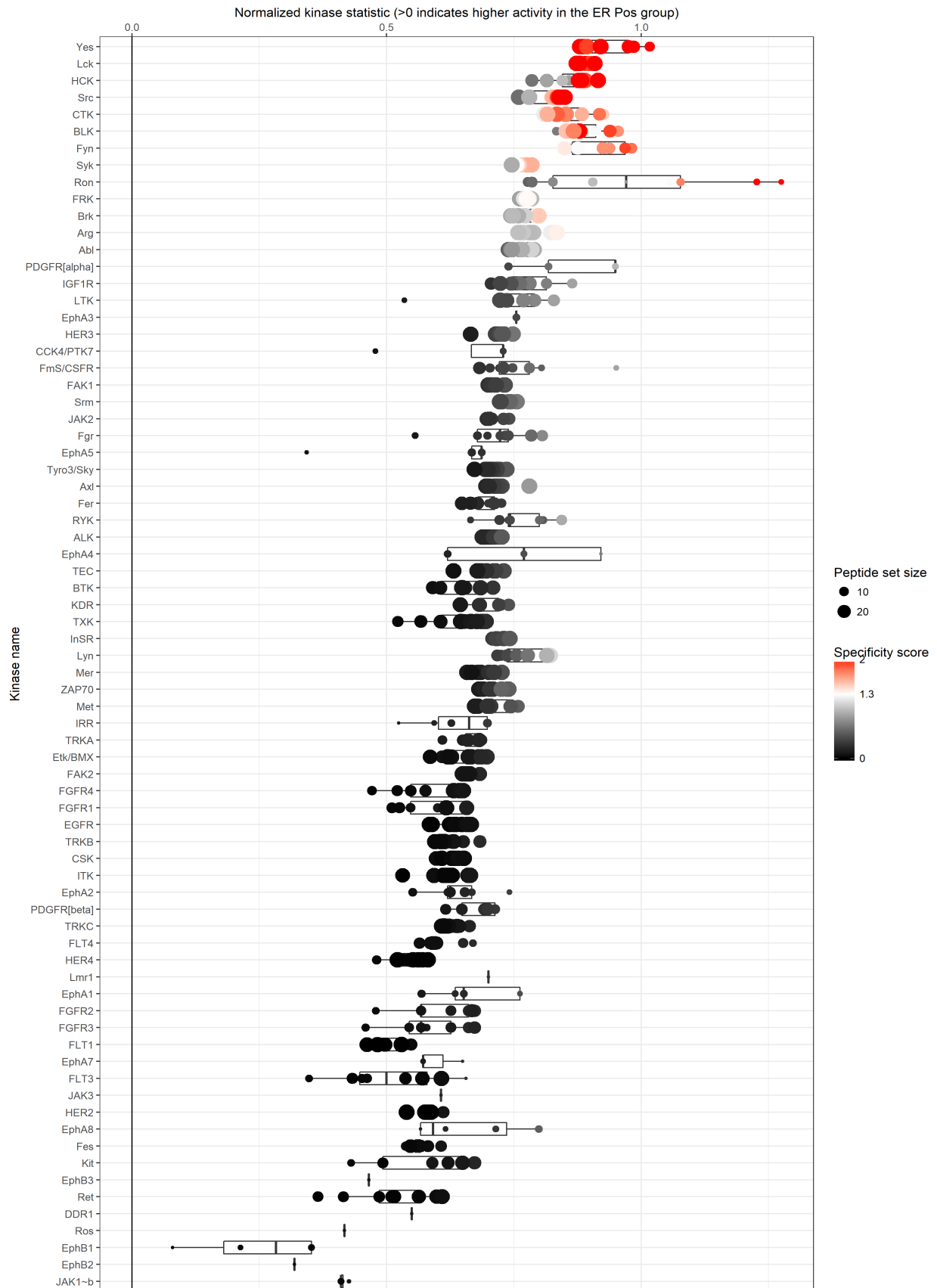


HR-neg HER2 pos pts Vs HVs

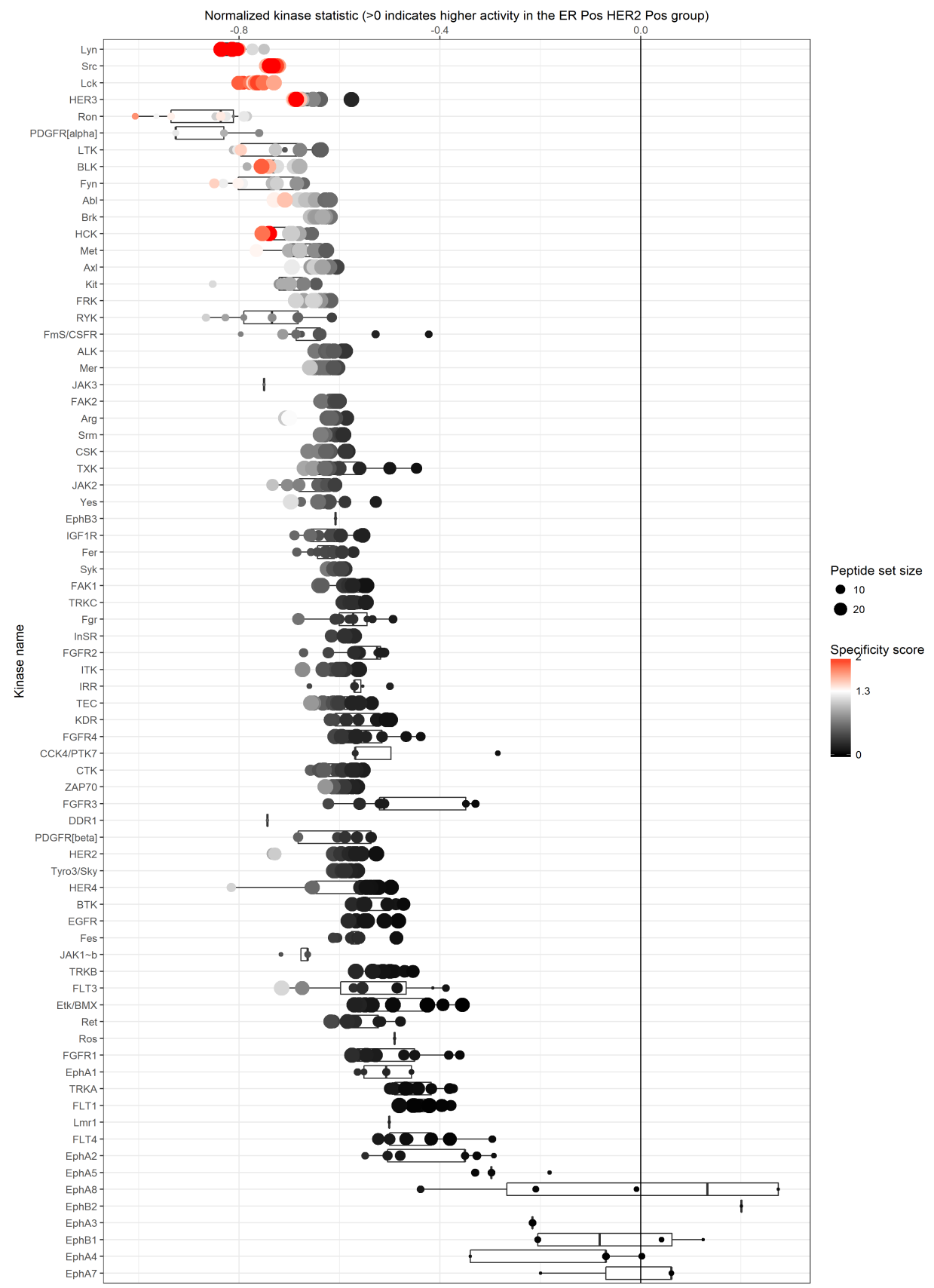


Phosphotyrosine kinase (PTK)

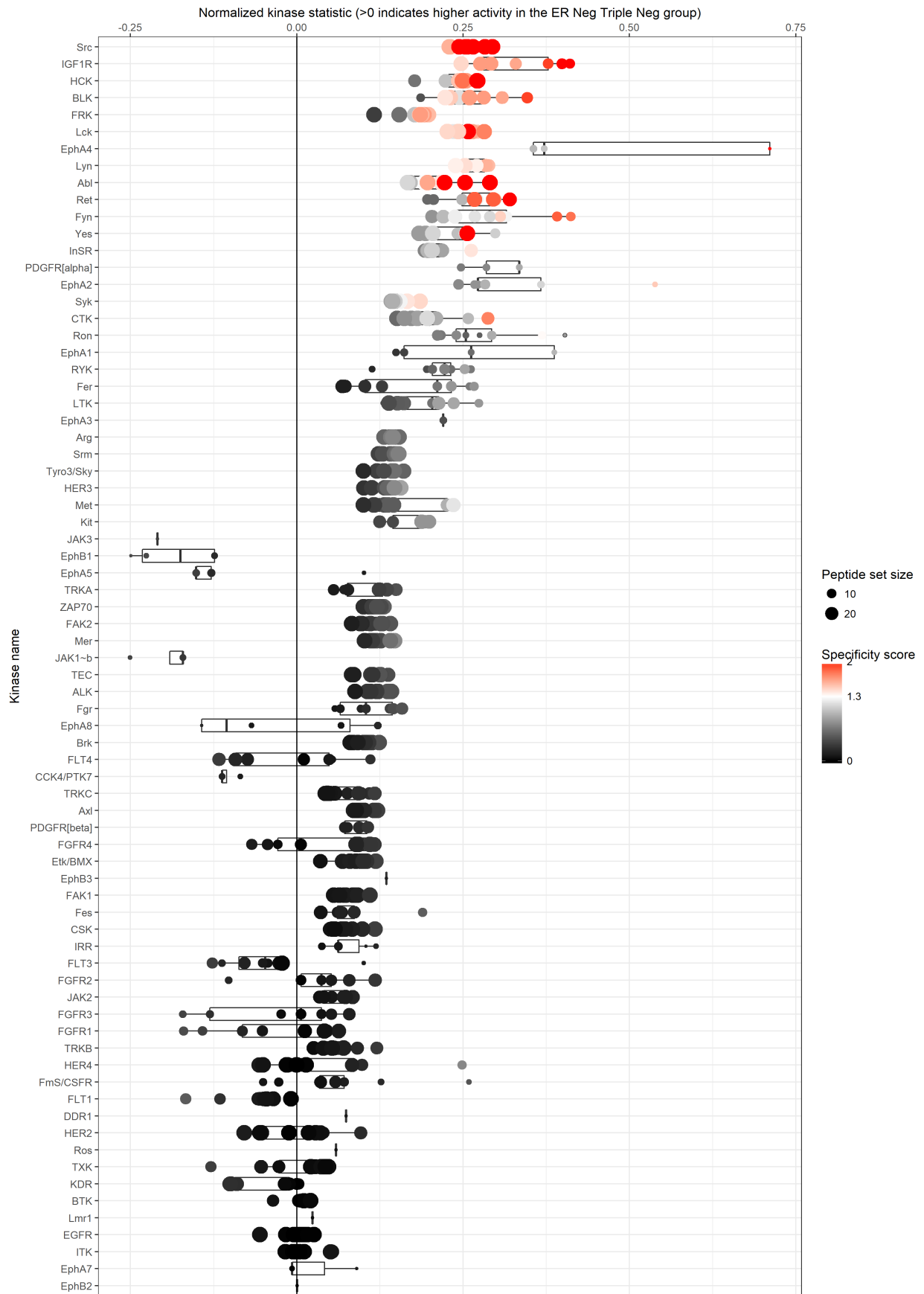
HR-pos HER2 neg pts Vs HVs



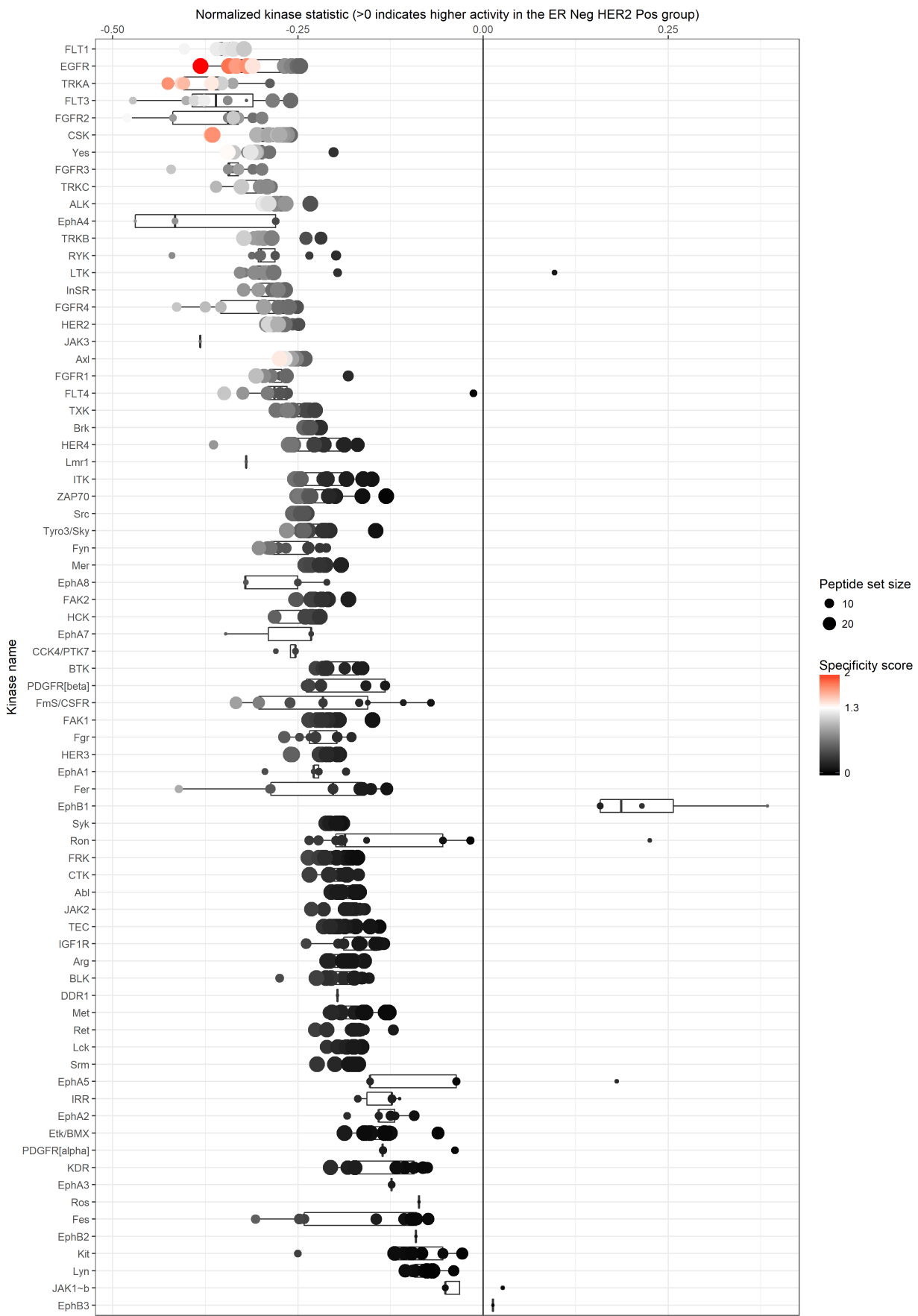
HR-pos HER2 pos pts Vs HVs



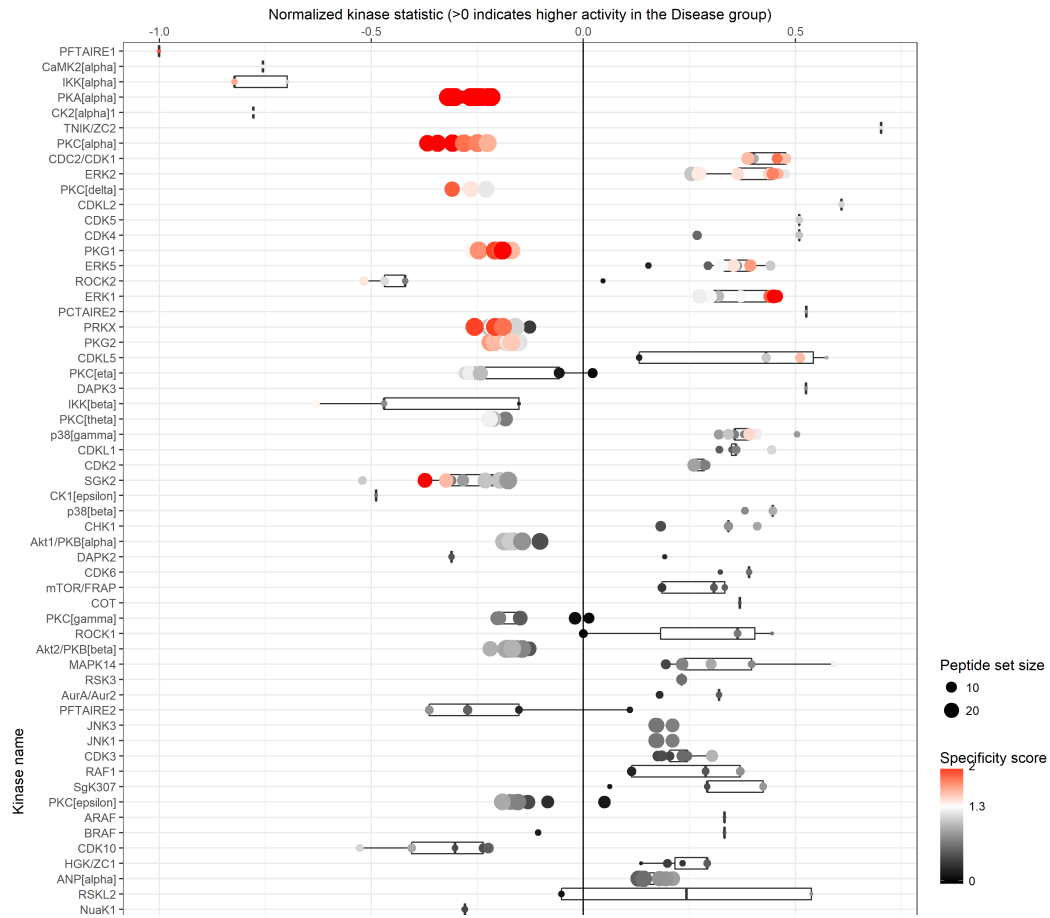
Triple negative pts Vs HVs



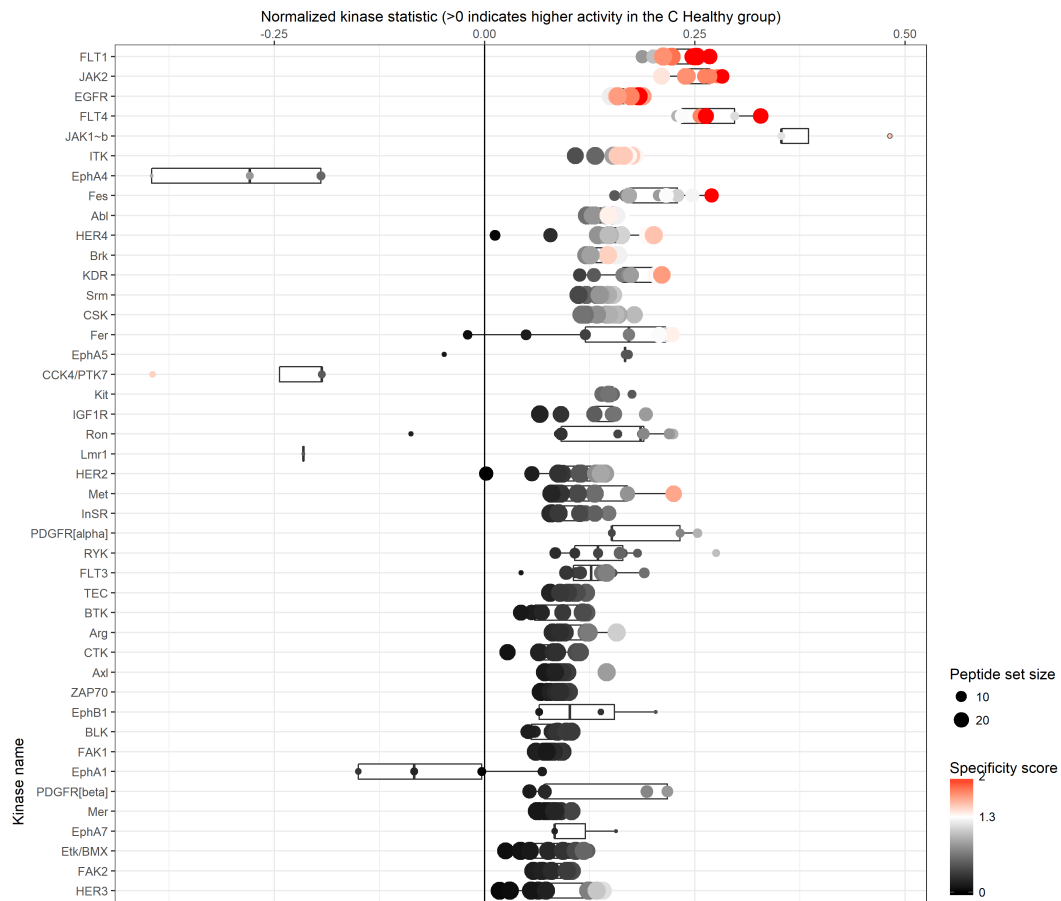
HR-neg HER2 pos pts Vs HVs



Benign breast disease compared to HVs for STK family



Benign breast disease compared to HVs for PTK family



Upstream Kinase Analysis showing a list of putative kinases for either the STK or PTK families based on the peptides phosphorylated differently in patients compared to HVs. The analysis is done for each subtype of breast cancer or patients with benign disease separately as indicated. Size of circle represents peptide data set belonging to each kinase and colour scale represents the specificity of the kinase for that peptide set (red highly specific).