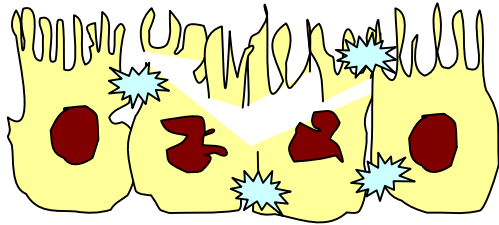
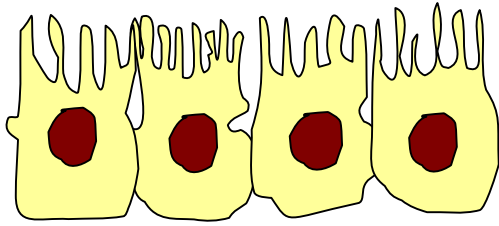


aetiological agent



1

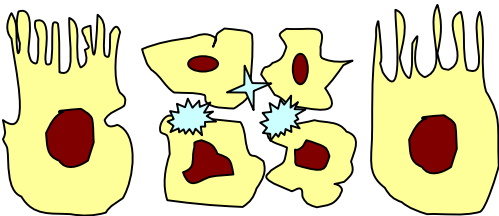
parenchymal damage

± endothelial damage

inflammatory infiltrate



2

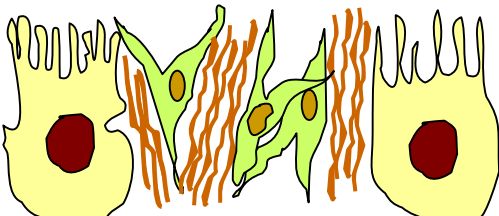


3

phagocytosis,  
release of GFs, CKs ROS

4

a) recruitment of ECM  
producing cells  
b) ± EC precursors

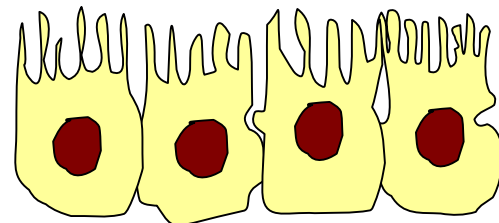


5

fibrillar ECM degradation  
and BM-like deposition

6

apoptosis of ECM  
producing cells



8

**RESTITUTIO AD  
INTEGRUM**



7

parenchymal cells:  
compensatory hyperplasia  
also by GF released by IC  
and ECM cells

