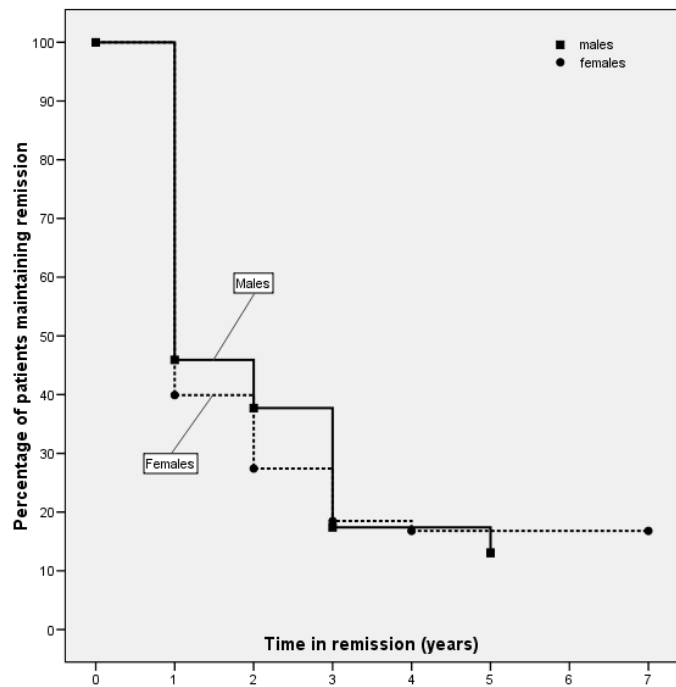
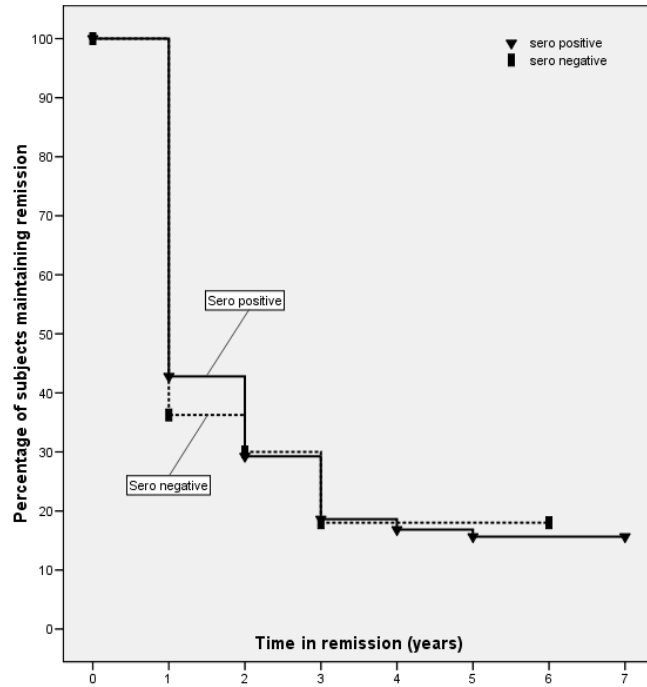


A



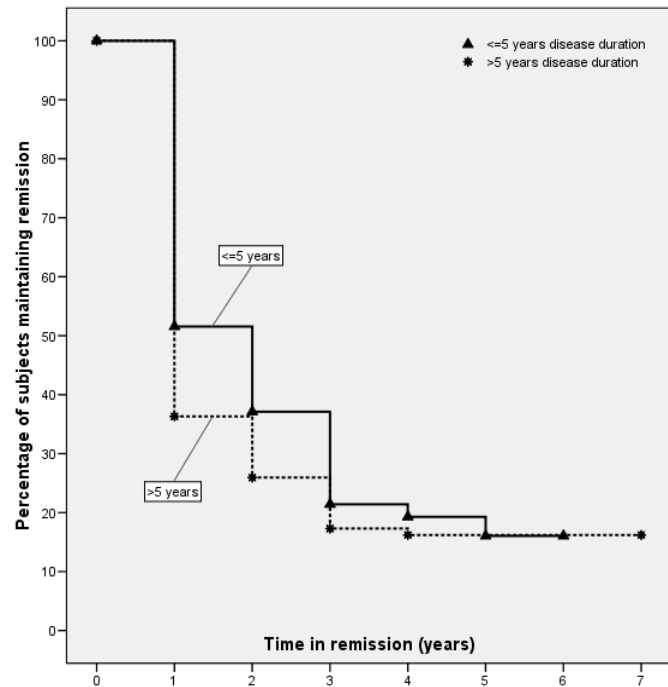
<b>Males</b>	61	28 / 61 (46%)	23 / 28 (82%)	6 / 13 (46%)	4 / 4 (100%)	3 / 4 (75%)		
<b>Females</b>	248	99 / 248 (40%)	68 / 99 (69%)	31 / 46 (67%)	20 / 22 (91%)	14 / 14 (100%)	8 / 8 (100%)	1 / 1 (100%)

B



<b>Sero positive</b>	229	98 / 229 (43%)	67 / 98 (68%)	28 / 44 (64%)	19 / 21 (90%)	13 / 14 (93%)	6 / 6 (100%)	1 / 1 (100%)
<b>Sero negative</b>	80	29 / 80 (36%)	24 / 29 (83%)	9 / 15 (60%)	5 / 5 (100%)	4 / 4 (100%)	2 / 2 (100%)	

C



<b>&lt;=5 years</b>	97	50 / 97 (52%)	36 / 50 (72%)	15 / 26 (58%)	9 / 10 (90%)	5 / 6 (83%)	1 / 1 (100%)	
<b>&gt;5 years</b>	212	77 / 212 (36%)	55 / 77 (71%)	22 / 33 (67%)	15 / 16 (94%)	12 / 12 (100%)	7 / 7 (100%)	1 / 1 (100%)